



# TRAC-MASTER®

Wall Wash/Floods

## LED WALL WASH/FLOOD

T1050L, T1051L, T1052L, T1053L,  
T1054L, T1056L, T1058L Series



Project: \_\_\_\_\_

Fixture Type: \_\_\_\_\_

Location: \_\_\_\_\_

Contact/Phone: \_\_\_\_\_

### PRODUCT DESCRIPTION

The T105xL family of narrow profile LED Wall Wash/Flood track fixtures deliver a powerful and uniform punch of light, utilizing less energy than comparable CMH fixtures and offering up to 4 times the rated life. Seven different lumen packages are capable of delivering from 1392 lumens up to 6317 powerful lumens, reaching efficacy of up to 148 lumens per watt. Employing a patented, proprietary hyperbolic reflector, they provide a very uniform, wide beam of light with minimal aperture brightness. Their unique, narrow profile and small footprint reduces visual clutter at the ceiling. The lightweight, but robust, die cast aluminum construction is designed to maintain a consistent center of gravity, regardless of aiming. Vertical aiming locks enable fixtures to be precisely aimed and locked in place, and a variety of light control accessories can be attached to optimize beam control. Their optimized thermal management design yields a maintenance-free minimum 50,000 hours service life at 70% lumen maintenance. Available in 2700K, 3000K, 3500K and 4000K color temperatures, the white-light T105xL family of narrow profile LED Wall Wash/Flood track fixtures are compatible with Juno Trac-Master and Trac-Lites track.



### PRODUCT SPECIFICATIONS

**Housing** Robust die cast aluminum construction • Perfectly balanced design maintains consistent center of gravity, regardless of aiming • Concealed wiring for a simplified, clean aesthetic • Computer designed heat sink provides outstanding thermal management, yielding 70% average lumen maintenance at 50,000 hours of operation • Available in white semi-gloss, black semi-gloss and silver metallic painted finishes.

**LED** Two high-performance LEDs per fixture provide outstanding reliability, performance and color quality/consistency • White phosphor high brightness LEDs in 2700K, 3000K, 3500K or 4000K color temperatures • Chromaticity range within a 2-step MacAdam Ellipse • Exceptional 80 CRI minimum on standard product • Optional high CRI versions offer 90 CRI.

**Driver** Cleverly assembled in fixture yoke arm • Insulating air gap between driver and LEDs optimizes thermal operation • Solid state electronic with integral overcurrent and short circuit protection • FCC Part 15 Class B rated at 120V.

**Dimming** Standard 120V version is standard dimmable using various high quality dimmers approved by Juno - see [T105xL-DIM](#).

**Reflector** Patented, custom hyperbolic reflector creates a uniform, wide beam pattern and enables LEDs to be deeply regressed to minimize aperture brightness.

**Aiming** 365° horizontal coverage • 95° vertical aiming capability in either direction (190° total) • Vertical aiming lock screws and aiming scales for precise, secure fixture aiming • Lock screws require standard 1/16" hex wrench (included).

**Lenses/Light Control Accessories** Lenses & light control accessories attach to front bezel using four (4) Philips screws (included with accessory) • Standard fixture is supplied without lens to deliver optimal photometric performance and to simplify accessory installation • Clear Polycarbonate Lens or Diffusion Lens are available as factory-installed options (CPL or DIFF) or field-installed accessories (CGF RECT3 CLEAR or DIFF RECT3) • Other lenses, including UV Filter (UVF RECT3), can also be factory-installed – consult factory • Other lenses available upon request – consult factory.

**Juno Universal Track Adapter** Universally compatible with both Trac-Master 1-circuit or 2-circuit track, Trac-Lites track, monopoints and special mountings • Also UL Recognized for use on ConTech® LT Series track • Copper alloy contacts provide precise spring action – no arcing and will not take a set • True, positive electrical ground • On/off switch included • Patented embossed polarity arrows on bottom of adapter • Spring-loaded positive latch with embossed polarity arrows secures track fixture to track • Two-position power contact provided for two-circuit application.

**Alternate TEK/HTEK Track Adapter** Compatible with either Juno TEK or HTEK track systems • System specific and assembled to track fixture • Integrally polarized construction to prevent reverse installation – only allows insertion in proper orientation • Rotary circuit selector enables simple switching between circuits • Integral on/off switch enables individual fixtures to be switched for servicing.

**Alternate GTYPE Track Adapter** Compatible with track systems based on GES type track, including Lithonia LT Commercial Track (not LTS type) • System specific and assembled to track fixture • Consult factory for additional information.

**Alternate HTYPE Track Adapter** Compatible with track systems which use a H-type track adapter, including Lithonia LTS Decorative Track (not LT type) • System specific and assembled to track fixture • Two-position power contact provided for two-circuit application • Consult factory for additional information.

**Alternate LTYPE Track Adapter** Compatible with track systems which use a L-type track adapter • System specific and assembled to track fixture • Two-position power contact provided for two-circuit application • Consult factory for additional information.

**Labels** UL and cUL Listed • 120V versions are DesignLights Consortium® Qualified • Union made • Assembled in U.S.A. • 90CRI versions can be used to comply with California Title 24, Part 6 high efficacy LED light source requirements.

#### Government Procurement

**BAA – Buy America(n) Act:** Product qualifies as a domestic end product under the Buy American Act as implemented in the FAR and DFARS. Product also qualifies as manufactured in the United States under DOT Buy America regulations.

**BABA – Build America Buy America:** Product qualifies as produced in the United States under the definitions of the Build America, Buy America Act.

Please refer to [www.acuitybrands.com/buy-american](http://www.acuitybrands.com/buy-american) for additional information.

**Warranty** 5-year limited warranty. This is the only warranty provided and no other statements in this specification sheet create any warranty of any kind. All other express and implied warranties are disclaimed. Complete warranty terms located at: [www.acuitybrands.com/support/warranty/terms-and-conditions](http://www.acuitybrands.com/support/warranty/terms-and-conditions).

**Note:** Actual performance may differ as a result of end-user environment and application.

All values are design or typical values, measured under laboratory conditions at 25 °C.

Specifications subject to change without notice.

ConTech is a registered trademark of ConTech Lighting.



# TRAC-MASTER®

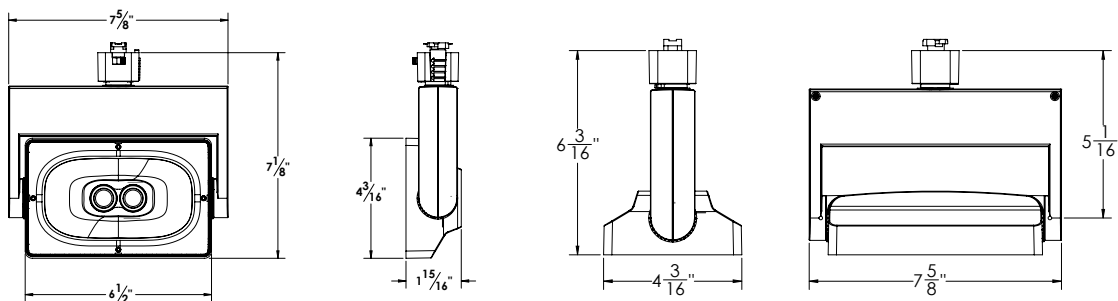
Wall Wash/Floods

## LED WALL WASH/FLOOD

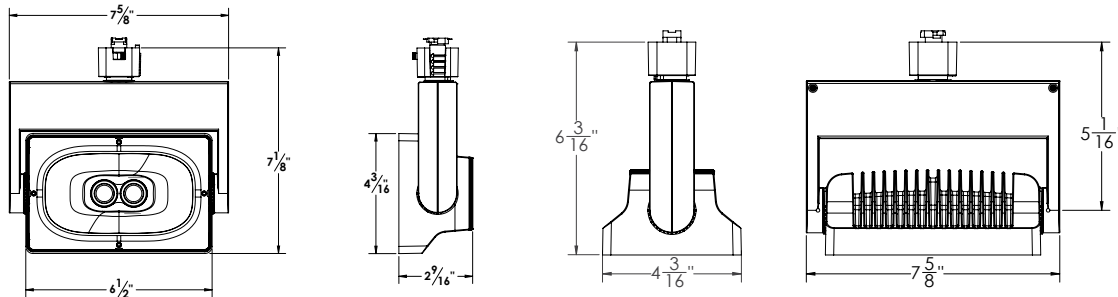
T1050L, T1051L, T1052L, T1053L, T1054L, T1056L, T1058L Series

### DIMENSIONS

T1050L, T1051L,  
T1052L, T1053L,  
T1054L  
2.72 LBS



T1056L, T1058L  
3.13 LBS



### ORDERING INFORMATION

Ordering Examples: T1050L 30K 80CRI PDIM WH, T1054L HTYPE 35K 90CRI PDIM BL CPL

Series	Mounting Adapter Type	Color Temperature	Color Rendering Index	Dimming Compatibility
T1050L 12W, 1700lm	(Blank) Juno Universal 120V Track Adapter	27K 2700K	80CRI 80 CRI	OFF <sup>1</sup> On/Off (Non-Dimming)
T1051L 16W, 2300lm	HTEK <sup>1</sup> HTEK 277V Track Adapter	30K 3000K	90CRI 90 CRI	PDIM Phase Dimmable
T1052L 22W, 3200lm	TEK <sup>2</sup> TEK 120V Track Adapter	35K 3500K		
T1053L 26W, 3700lm	GTYPE G-Type Track Adapter	40K 4000K		
T1054L 30W, 4200lm	HTYPE H-Type Track Adapter			
T1056L 38W, 5200lm	LTYPE L-Type Track Adapter			
T1058L 45W, 6300lm				

Finish	Factory-Installed Lens Option
BL Black	CPL Clear Polycarbonate Lens
SL Silver	DIFF Diffusion Lens
WH White	

Notes:

- HTEK versions available with OFF option only, and OFF option available with HTEK versions only.
- TEK and HTEK adapters are black on silver finish fixtures.
- Fixtures are designed to accept up to one light control accessory, except CGF or DIFF light control accessories which can be combined with one additional light control accessory (HCLBL, UVF, SNOOTBL, EYEBROWBL, EYEBROWWH, or TBDR).
- Add finish code to complete catalog number (Example: T40N WH).

Accessories (ordered separately) <sup>3</sup>	
HCLBL RECT3 Hexagonal Cell Louver	SNOOTBL RECT3 Snoot - Black
CGF RECT3 CLEAR Clear Polycarbonate Lens	EYEBROWBL RECT3 Eyebrow - Black
DIFF RECT3 Diffusion Lens	EYEBROWWH RECT3 Eyebrow - White
UVF RECT3 UV Filter	TBDR BLCK RECT3 Barn Door - Black
	T40N <sup>4</sup> Monopoint Canopy

See specification sheet [D1.2.2](#) for details.  
Other accessories can be found on specification sheet [D1.2.0](#).

**TRAC-MASTER®**

Wall Wash/Floods

**LED WALL WASH/FLOOD****T1050L, T1051L, T1052L, T1053L, T1054L, T1056L, T1058L Series****PERFORMANCE DATA<sup>1</sup>**

Catalog Number	Input Voltage	Input Wattage	Lumens	Efficacy (LPW)	Rated Life (Hours)
T1050L 27K 80CRI	120V	11.8	1597	135	50,000
T1050L 30K 80CRI	120V	11.8	1665	141	50,000
T1050L 35K 80CRI	120V	11.8	1694	143	50,000
T1050L 40K 80CRI	120V	11.8	1708	145	50,000
T1050L 27K 90CRI	120V	11.8	1392	118	50,000
T1050L 30K 90CRI	120V	11.8	1447	122	50,000
T1050L 35K 90CRI	120V	11.8	1469	124	50,000
T1050L 40K 90CRI	120V	11.8	1470	124	50,000
T1051L 27K 80CRI	120V	16.0	2211	138	50,000
T1051L 30K 80CRI	120V	16.0	2305	144	50,000
T1051L 35K 80CRI	120V	16.0	2346	147	50,000
T1051L 40K 80CRI	120V	16.0	2365	148	50,000
T1051L 27K 90CRI	120V	16.0	1927	120	50,000
T1051L 30K 90CRI	120V	16.0	2004	125	50,000
T1051L 35K 90CRI	120V	16.0	2034	127	50,000
T1051L 40K 90CRI	120V	16.0	2035	127	50,000
T1052L 27K 80CRI	120V	21.9	2997	137	50,000
T1052L 30K 80CRI	120V	21.9	3125	143	50,000
T1052L 35K 80CRI	120V	21.9	3180	145	50,000
T1052L 40K 80CRI	120V	21.9	3206	146	50,000
T1052L 27K 90CRI	120V	21.9	2612	119	50,000
T1052L 30K 90CRI	120V	21.9	2717	124	50,000
T1052L 35K 90CRI	120V	21.9	2757	126	50,000
T1052L 40K 90CRI	120V	21.9	2758	126	50,000
T1053L 27K 80CRI	120V	26.1	3474	133	50,000
T1053L 30K 80CRI	120V	26.1	3621	139	50,000
T1053L 35K 80CRI	120V	26.1	3686	141	50,000
T1053L 40K 80CRI	120V	26.1	3715	143	50,000
T1053L 27K 90CRI	120V	26.1	3028	116	50,000
T1053L 30K 90CRI	120V	26.1	3149	121	50,000
T1053L 35K 90CRI	120V	26.1	3195	123	50,000
T1053L 40K 90CRI	120V	26.1	3197	123	50,000
T1054L 27K 80CRI	120V	29.7	3931	132	50,000
T1054L 30K 80CRI	120V	29.7	4098	138	50,000
T1054L 35K 80CRI	120V	29.7	4170	140	50,000
T1054L 40K 80CRI	120V	29.7	4204	142	50,000
T1054L 27K 90CRI	120V	29.7	3426	115	50,000
T1054L 30K 90CRI	120V	29.7	3563	120	50,000
T1054L 35K 90CRI	120V	29.7	3615	122	50,000
T1054L 40K 90CRI	120V	29.7	3618	122	50,000

Option/Accessory	Lumens Multiplier
CPL or CGF RECT3 CLEAR	0.94
DIFF or DIFF RECT3	0.92
UVF RECT3	0.96
HCLBL RECT3	0.31

<sup>1</sup> Performance data, including Rated Life, is based on measurements of an individual fixture operating in a 25°C ambient.

**TRAC-MASTER®**

Wall Wash/Floods

**LED WALL WASH/FLOOD****T1050L, T1051L, T1052L, T1053L, T1054L, T1056L, T1058L Series****PERFORMANCE DATA<sup>1</sup>**

Catalog Number	Input Voltage	Input Wattage	Lumens	Efficacy (LPW)	Rated Life (Hours)
<b>T1056L 27K 80CRI</b>	120V	37.8	4914	130	50,000
<b>T1056L 30K 80CRI</b>	120V	37.8	5122	135	50,000
<b>T1056L 35K 80CRI</b>	120V	37.8	5213	138	50,000
<b>T1056L 40K 80CRI</b>	120V	37.8	5255	139	50,000
<b>T1056L 27K 90CRI</b>	120V	37.8	4283	113	50,000
<b>T1056L 30K 90CRI</b>	120V	37.8	4453	118	50,000
<b>T1056L 35K 90CRI</b>	120V	37.8	4519	119	50,000
<b>T1056L 40K 90CRI</b>	120V	37.8	4522	120	50,000
<b>T1058L 27K 80CRI</b>	120V	44.9	5906	131	50,000
<b>T1058L 30K 80CRI</b>	120V	44.9	6157	137	50,000
<b>T1058L 35K 80CRI</b>	120V	44.9	6266	139	50,000
<b>T1058L 40K 80CRI</b>	120V	44.9	6317	141	50,000
<b>T1058L 27K 90CRI</b>	120V	44.9	5148	115	50,000
<b>T1058L 30K 90CRI</b>	120V	44.9	5353	119	50,000
<b>T1058L 35K 90CRI</b>	120V	44.9	5432	121	50,000
<b>T1058L 40K 90CRI</b>	120V	44.9	5435	121	50,000

Option/Accessory	Lumens Multiplier
CPL or CGF RECT3 CLEAR	0.94
DIFF or DIFF RECT3	0.92
UVF RECT3	0.96
HCLBL RECT3	0.31

<sup>1</sup> Performance data, including Rated Life, is based on measurements of an individual fixture operating in a 25°C ambient.

**ELECTRICAL DATA**

	<b>T1050L</b>	<b>T1051L</b>	<b>T1052L</b>	<b>T1053L</b>	<b>T1054L</b>	<b>T1056L</b>	<b>T1058L</b>
Input Voltage	120V	120V	120V	120V	120V	120V	120V
Input Current (max)	0.11A	0.15A	0.21A	0.25A	0.29A	0.37A	0.44A
Power Factor	>0.90	>0.90	>0.90	>0.90	>0.90	>0.90	>0.90
T.H.D.	<20%	<20%	<20%	<20%	<20%	<20%	<20%

**ELECTRICAL DATA**

	<b>T1050L</b>	<b>T1051L</b>	<b>T1052L</b>	<b>T1053L</b>	<b>T1054L</b>	<b>T1056L</b>	<b>T1058L</b>
Input Voltage	277V	277V	277V	277V	277V	277V	277V
Input Current (max)	0.06	0.07	0.10	0.12	0.14	0.17	0.20
Power Factor	>0.85	>0.90	>0.90	>0.90	>0.90	>0.90	>0.90
T.H.D.	<20%	<20%	<20%	<20%	<20%	<20%	<20%

# TRAC-MASTER®

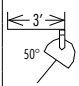
Wall Wash/Floods

## LED WALL WASH/FLOOD

T1050L, T1051L, T1052L, T1053L, T1054L, T1056L, T1058L Series

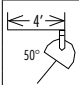
### T1054L 30K 80CRI WALL WASH/FLOOD

#### TRAC 3' FROM WALL

TRAC 3' FROM WALL	Distance from ceiling	Single Fixture Performance					Multiple Fixture Performance									
		0	1'	2'	3'	4'	5'	← 4' →			← 5' →			← 6' →		
 30W LED 30K, 80CRI	1'	152	123	71	32	14	6	165	142	165	158	96	158	154	63	154
	2'	123	105	71	42	21	9	144	141	144	132	110	132	128	83	128
	3'	78	70	52	34	21	12	99	104	99	89	85	89	84	68	84
	4'	48	44	35	26	17	11	65	71	65	59	61	59	55	51	54
	5'	30	38	24	19	14	10	42	48	42	40	42	40	37	37	36
	6'	19	18	16	13	10	8	30	33	30	28	30	28	26	27	25
	7'	13	13	11	10	8	7	21	23	21	20	21	20	18	20	18
	8'	9	9	8	7	6	5	15	16	15	15	16	15	14	15	13
	9'	7	7	6	6	5	4	11	12	12	11	12	11	11	11	10

CRI/CCT Multiplier		
CRI	CCT	Multiplier
80	27K	0.96
	30K	1.00
	35K	1.02
	40K	1.03
90	27K	0.84
	30K	0.87
	35K	0.88
	40K	0.88

#### TRAC 4' FROM WALL

TRAC 4' FROM WALL	Distance from ceiling	Single Fixture Performance					Multiple Fixture Performance									
		0	1'	2'	3'	4'	5'	← 4' →			← 5' →			← 6' →		
 30W LED 30K, 80CRI	1'	74	66	47	27	14	8	89	95	89	82	74	82	79	54	78
	2'	83	74	58	37	33	13	106	113	106	95	93	95	89	75	89
	3'	62	57	46	33	23	14	85	92	85	77	79	77	71	66	71
	4'	44	41	35	26	19	13	64	69	63	57	61	58	53	53	53
	5'	30	29	25	20	15	11	48	51	48	42	46	42	39	41	38
	6'	21	20	18	15	12	9	34	37	34	31	34	31	29	31	28
	7'	15	14	13	12	10	8	25	27	25	23	26	24	22	23	21
	8'	11	11	10	9	7	6	19	20	19	18	19	18	17	18	16
	9'	8	8	7	7	6	5	15	15	15	14	15	15	13	14	12

Fixture	Multiplier
T1050L	0.41
T1051L	0.56
T1052L	0.76
T1053L	0.88
T1054L	1.00
T1056L	1.25
T1058L	1.50

Option/Accessory	Multiplier
CPL or CGF RECT3 CLEAR	0.94
DIFF or DIFF RECT3	0.92
UVF RECT3	0.96
HCLBL RECT3	0.31

**TRAC-MASTER®**

Wall Wash/Floods

**LED WALL WASH/FLOOD**
**T1050L, T1051L, T1052L, T1053L,  
T1054L, T1056L, T1058L Series**

**DIRECT CANOPY MOUNT**

Project: \_\_\_\_\_

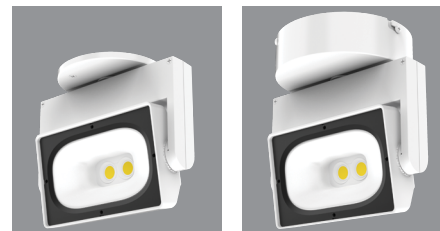
Fixture Type: \_\_\_\_\_

Location: \_\_\_\_\_

Contact/Phone: \_\_\_\_\_

## PRODUCT DESCRIPTION

The T105xL family of narrow profile LED Wall Wash/Flood track fixtures deliver a powerful and uniform punch of light, utilizing less energy than comparable CMH fixtures and offering up to 4 times the rated life. Seven different lumen packages are capable of delivering from 1392 lumens up to 6317 powerful lumens, reaching efficacy of up to 148 lumens per watt. Employing a patented, proprietary hyperbolic reflector, they provide a very uniform, wide beam of light with minimal aperture brightness. Their unique, narrow profile and small footprint reduces visual clutter at the ceiling. The lightweight, but robust, die cast aluminum construction is designed to maintain a consistent center of gravity, regardless of aiming. Vertical aiming locks enable fixtures to be precisely aimed and locked in place, and a variety of light control accessories can be attached to optimize beam control. Their optimized thermal management design yields a maintenance-free minimum 50,000 hours service life at 70% lumen maintenance. The Canopy Mount version is designed to mount over a standard j-box and is available with a variety of performance options including 120/277V operation, phase-dimming, and 0-10V dimming.



## PRODUCT SPECIFICATIONS

**Housing** Robust die cast aluminum construction • Perfectly balanced design maintains consistent center of gravity, regardless of aiming • Concealed wiring for a simplified, clean aesthetic • Computer designed heat sink provides outstanding thermal management, yielding 70% average lumen maintenance at 50,000 hours of operation • Available in white or black finishes.

**LED** Two high-performance LEDs per fixture provide outstanding reliability, performance and color quality/consistency • White phosphor high brightness LEDs in 2700K, 3000K, 3500K or 4000K color temperatures • Chromaticity range within a 2-step MacAdam Ellipse • Exceptional 80 CRI minimum on standard product • Optional high CRI versions offer 90 CRI.

**Electrical/Driver** Multi-volt (120-277V, 50/60Hz) phase-dimmable (PDIM) driver cleverly assembled in fixture yoke arm and is assembled to a slim canopy • Multi-volt (120-277V, 50/60Hz) 0-10V dimmable (ZT - where available) driver is mounted in a deep canopy • 0-10V dimming requires two (2) additional low-voltage wires to be pulled.

**Dimming** PDIM versions are phase-dimmable (120V only) down to 10% or less using high quality, factory-approved dimmers - see [T105xL-DIM](#) • ZT versions are 0-10V dimmable down to as low as 1% and require two (2) additional low-voltage wires to be pulled.

**Reflector** Patented, custom hyperbolic reflector creates a uniform, wide beam pattern and enables LEDs to be deeply regressed to minimize aperture brightness.

**Mounting** Installs over a standard electrical j-box • Universal mounting plate accommodates octagon box and typical j-box mud rings • Mounting plate designed to be installed snug to mounting surface • May be ceiling or wall mounted in any orientation • Canopy is securely tethered to mounting plate to facilitate wiring terminations.

**Aiming** 365° horizontal coverage • 95° vertical aiming capability in either direction (190° total) • Vertical aiming lock screws and aiming scales for precise, secure fixture aiming • Lock screws require standard 1/16" hex wrench (included).

**Lenses/Light Control Accessories** MVOLT PDIM fixtures (slim canopy) are supplied with a factory-installed clear glass lens • Clear glass lens on MVOLT PDIM fixtures can be replaced with a UVF lens in the field if desired • MVOLT ZT fixtures (deep canopy) are supplied without lens to deliver optimal photometric performance • MVOLT ZT fixtures are available with Clear Polycarbonate Lens (CPL) or Diffusion Lens (DIFF) factory-installed options • MVOLT ZT fixtures can accept all listed accessories • MVOLT ZT fixtures are designed to accept up to one light control accessory, except CPL, CGF or DIFF light control accessories which can be combined with one additional light control accessory (HCLBL, UVF, SNOOTBL, EYEBROWBL, EYEBROWWH, or TBDR) • Other lenses, including UV Filter (UVF RECT3), can also be factory-installed – consult factory • Field-installed lenses & light control accessories attach to front bezel using four (4) Philips screws (included with accessory) • Other lenses available upon request – consult factory.

**Labels** UL and C-UL Damp Location Listed • Union made • Assembled in U.S.A.

### Government Procurement

BAA – Buy America(n) Act: Product qualifies as a domestic end product under the Buy American Act as implemented in the FAR and DFARS. Product also qualifies as manufactured in the United States under DOT Buy America regulations.

BABA – Build America Buy America: Product qualifies as produced in the United States under the definitions of the Build America, Buy America Act.

Please refer to [www.acuitybrands.com/buy-american](http://www.acuitybrands.com/buy-american) for additional information.

**Warranty** 5-year limited warranty. This is the only warranty provided and no other statements in this specification sheet create any warranty of any kind. All other express and implied warranties are disclaimed. Complete warranty terms located at: [www.acuitybrands.com/support/warranty/terms-and-conditions](http://www.acuitybrands.com/support/warranty/terms-and-conditions).

**Note:** Actual performance may differ as a result of end-user environment and application.

All values are design or typical values, measured under laboratory conditions at 25 °C.

Specifications subject to change without notice.

# TRAC-MASTER®

Wall Wash/Floods

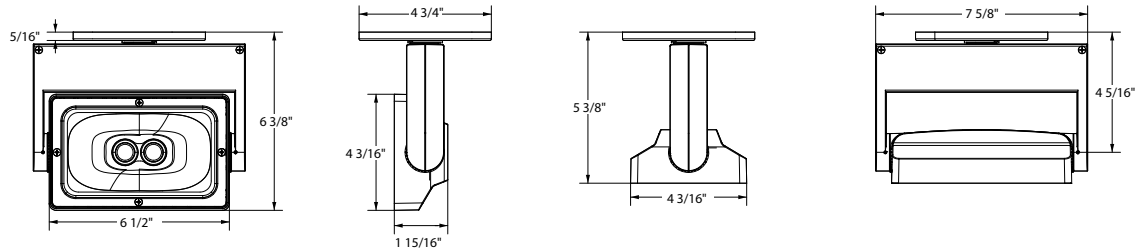
## LED WALL WASH/FLOOD

T1050L, T1051L, T1052L, T1053L, T1054L, T1056L, T1058L Series

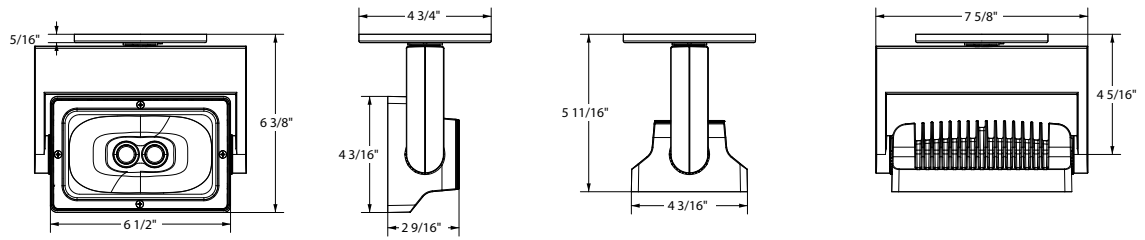
DIRECT CANOPY MOUNT

### DIMENSIONS

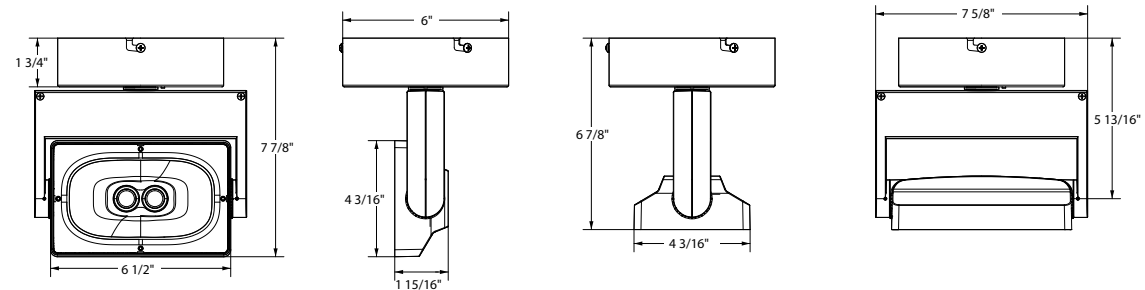
T1050L PDIM  
T1051L PDIM  
T1052L PDIM  
T1053L PDIM  
T1054L PDIM  
2.8 LBS



T1056L PDIM  
T1058L PDIM  
3.2 LBS



T1050L ZT  
T1051L ZT  
T1052L ZT  
T1053L ZT  
T1054L ZT  
3.25 LBS



**TRAC-MASTER®**

Wall Wash/Floods

**LED WALL WASH/FLOOD****T1050L, T1051L, T1052L, T1053L, T1054L, T1056L, T1058L Series****DIRECT CANOPY MOUNT****ORDERING INFORMATION**

Ordering Examples: T1050L CPY 30K 80CRI MVOLT PDIM WH, T1050L CPY 35K 90CRI MVOLT ZT BL

Series	Mounting Adapter Type	Color Temperature	Color Rendering Index	Input Voltage	Dimming Compatibility	Finish	Factory-Installed Lens Option <sup>1</sup>
<b>T1050L</b> 12W, 1700lm	<b>CPY</b> Canopy Mounting	<b>27K</b> 2700K	<b>80CRI</b> 80 CRI <b>90CRI</b> 90 CRI	<b>MVOLT</b> 120/277V Operation	<b>PDIM</b> Phase Dimmable <b>ZT</b> 0-10V Dimming	<b>BL</b> Black <b>WH</b> White	<b>CPL</b> Clear Polycarbonate Lens <b>DIFF</b> Diffusion Lens
<b>T1051L</b> 16W, 2300lm		<b>30K</b> 3000K					
<b>T1052L</b> 22W, 3200lm		<b>35K</b> 3500K					
<b>T1053L</b> 26W, 3700lm		<b>40K</b> 4000K					
<b>T1054L</b> 30W, 4200lm							

Ordering Examples: T1054L CPY 30K 80CRI MVOLT PDIM WH

Series	Mounting Adapter Type	Color Temperature	Color Rendering Index	Input Voltage	Dimming Compatibility	Finish
<b>T1056L</b> 38W, 5200lm	<b>CPY</b> Canopy Mounting	<b>27K</b> 2700K	<b>80CRI</b> 80 CRI <b>90CRI</b> 90 CRI	<b>MVOLT</b> 120/277V Operation	<b>PDIM</b> Phase Dimmable	<b>BL</b> Black <b>WH</b> White
<b>T1058L</b> 45W, 6300lm		<b>30K</b> 3000K				
		<b>35K</b> 3500K <b>40K</b> 4000K				

Accessories (ordered separately) <sup>2</sup>	
<b>HCLBL RECT3</b>	Hexagonal Cell Louver
<b>UVF RECT3</b>	UV Filter
<b>CGF RECT3 CLEAR</b>	Clear Polycarbonate Lens
<b>DIFF RECT3</b>	Diffusion Lens
<b>SNOOTBL RECT3</b>	Snoot - Black
<b>EYEBROWBL RECT3</b>	EyeBrow - Black
<b>EYEBROWWH RECT3</b>	EyeBrow - White
<b>TBDR BLCK RECT3</b>	Barn Door - Black

See specification sheet [D1.2.2](#) for details.  
Other accessories can be found on specification sheet [D1.2.0](#).

## Notes:

- CPL or DIFF Factory-Installed Lens Option is available with ZT Dimming Compatibility Option only.
- Accessory compatibility differs based on chosen configuration - see Lenses/Light Control Accessories section or contact Technical Support for compatibility information.



**TRAC-MASTER®**

Wall Wash/Floods

**LED WALL WASH/FLOOD****T1050L, T1051L, T1052L, T1053L, T1054L, T1056L, T1058L Series****DIRECT CANOPY MOUNT****PERFORMANCE DATA<sup>1</sup>**

Catalog Number	Input Voltage	Input Wattage	Lumens	Efficacy (LPW)	Rated Life (Hours)
T1050L 27K 80CRI	120V	11.8	1597	135	50,000
T1050L 30K 80CRI	120V	11.8	1665	141	50,000
T1050L 35K 80CRI	120V	11.8	1694	143	50,000
T1050L 40K 80CRI	120V	11.8	1708	145	50,000
T1050L 27K 90CRI	120V	11.8	1392	118	50,000
T1050L 30K 90CRI	120V	11.8	1447	122	50,000
T1050L 35K 90CRI	120V	11.8	1469	124	50,000
T1050L 40K 90CRI	120V	11.8	1470	124	50,000
T1051L 27K 80CRI	120V	16.0	2211	138	50,000
T1051L 30K 80CRI	120V	16.0	2305	144	50,000
T1051L 35K 80CRI	120V	16.0	2346	147	50,000
T1051L 40K 80CRI	120V	16.0	2365	148	50,000
T1051L 27K 90CRI	120V	16.0	1927	120	50,000
T1051L 30K 90CRI	120V	16.0	2004	125	50,000
T1051L 35K 90CRI	120V	16.0	2034	127	50,000
T1051L 40K 90CRI	120V	16.0	2035	127	50,000
T1052L 27K 80CRI	120V	21.9	2997	137	50,000
T1052L 30K 80CRI	120V	21.9	3125	143	50,000
T1052L 35K 80CRI	120V	21.9	3180	145	50,000
T1052L 40K 80CRI	120V	21.9	3206	146	50,000
T1052L 27K 90CRI	120V	21.9	2612	119	50,000
T1052L 30K 90CRI	120V	21.9	2717	124	50,000
T1052L 35K 90CRI	120V	21.9	2757	126	50,000
T1052L 40K 90CRI	120V	21.9	2758	126	50,000
T1053L 27K 80CRI	120V	26.1	3474	133	50,000
T1053L 30K 80CRI	120V	26.1	3621	139	50,000
T1053L 35K 80CRI	120V	26.1	3686	141	50,000
T1053L 40K 80CRI	120V	26.1	3715	143	50,000
T1053L 27K 90CRI	120V	26.1	3028	116	50,000
T1053L 30K 90CRI	120V	26.1	3149	121	50,000
T1053L 35K 90CRI	120V	26.1	3195	123	50,000
T1053L 40K 90CRI	120V	26.1	3197	123	50,000
T1054L 27K 80CRI	120V	29.7	3931	132	50,000
T1054L 30K 80CRI	120V	29.7	4098	138	50,000
T1054L 35K 80CRI	120V	29.7	4170	140	50,000
T1054L 40K 80CRI	120V	29.7	4204	142	50,000
T1054L 27K 90CRI	120V	29.7	3426	115	50,000
T1054L 30K 90CRI	120V	29.7	3563	120	50,000
T1054L 35K 90CRI	120V	29.7	3615	122	50,000
T1054L 40K 90CRI	120V	29.7	3618	122	50,000

Option/Accessory	Lumens Multiplier
MVOLT ZT (No Lens)	1.00
MVOLT PDIM (Standard Clear Glass Lens)	0.92
CPL or CGF RECT3 CLEAR	0.94
DIFF or DIFF RECT3	0.92
UVF RECT3	0.96
HCLBL RECT3	0.31

<sup>1</sup> Performance data, including Rated Life, is based on measurements of an individual fixture operating in a 25°C ambient.

**TRAC-MASTER®**

Wall Wash/Floods

**LED WALL WASH/FLOOD****T1050L, T1051L, T1052L, T1053L, T1054L, T1056L, T1058L Series****DIRECT CANOPY MOUNT****PERFORMANCE DATA<sup>1</sup>**

Catalog Number	Input Voltage	Input Wattage	Lumens	Efficacy (LPW)	Rated Life (Hours)
<b>T1056L 27K 80CRI</b>	120V	37.8	4914	130	50,000
<b>T1056L 30K 80CRI</b>	120V	37.8	5122	135	50,000
<b>T1056L 35K 80CRI</b>	120V	37.8	5213	138	50,000
<b>T1056L 40K 80CRI</b>	120V	37.8	5255	139	50,000
<b>T1056L 27K 90CRI</b>	120V	37.8	4283	113	50,000
<b>T1056L 30K 90CRI</b>	120V	37.8	4453	118	50,000
<b>T1056L 35K 90CRI</b>	120V	37.8	4519	119	50,000
<b>T1056L 40K 90CRI</b>	120V	37.8	4522	120	50,000
<b>T1058L 27K 80CRI</b>	120V	44.9	5906	131	50,000
<b>T1058L 30K 80CRI</b>	120V	44.9	6157	137	50,000
<b>T1058L 35K 80CRI</b>	120V	44.9	6266	139	50,000
<b>T1058L 40K 80CRI</b>	120V	44.9	6317	141	50,000
<b>T1058L 27K 90CRI</b>	120V	44.9	5148	115	50,000
<b>T1058L 30K 90CRI</b>	120V	44.9	5353	119	50,000
<b>T1058L 35K 90CRI</b>	120V	44.9	5432	121	50,000
<b>T1058L 40K 90CRI</b>	120V	44.9	5435	121	50,000

Option/Accessory	Lumens Multiplier
MVOLT ZT (No Lens)	1.00
MVOLT PDIM (Standard Clear Glass Lens)	0.92
CPL or CGF RECT3 CLEAR	0.94
DIFF or DIFF RECT3	0.92
UVF RECT3	0.96
HCLBL RECT3	0.31

<sup>1</sup> Performance data, including Rated Life, is based on measurements of an individual fixture operating in a 25°C ambient.

**ELECTRICAL DATA – PDIM VERSIONS**

	T1050L		T1051L		T1052L		T1053L		T1054L		T1056L		T1058L	
Input Voltage	120V	277V	120V	277V	120V	277V	120V	277V	120V	277V	120V	277V	120V	277V
Input Current (max)	0.11A	0.06	0.15A	0.07	0.21A	0.10	0.25A	0.12	0.29A	0.14	0.37A	0.17	0.44A	0.20
Power Factor	>0.90	>0.85	>0.90	>0.90	>0.90	>0.90	>0.90	>0.90	>0.90	>0.90	>0.90	>0.90	>0.90	>0.90
T.H.D.	<20%	<20%	<20%	<20%	<20%	<20%	<20%	<20%	<20%	<20%	<20%	<20%	<20%	<20%

**ELECTRICAL DATA – ZT VERSIONS**

	T1050L		T1051L		T1052L		T1053L		T1054L	
Input Voltage	120V	277V	120V	277V	120V	277V	120V	277V	120V	277V
Input Current (max)	0.12A	0.06A	0.16A	0.08A	0.21A	0.10A	0.24A	0.11A	0.28A	0.13A
Power Factor	>0.95	>0.85	>0.95	>0.90	>0.95	>0.90	>0.95	>0.95	>0.95	>0.95
T.H.D.	<10%	<20%	<10%	<20%	<10%	<20%	<10%	<10%	<10%	<10%

# TRAC-MASTER®

Wall Wash/Floods

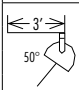
## LED WALL WASH/FLOOD

T1050L, T1051L, T1052L, T1053L, T1054L, T1056L, T1058L Series

DIRECT CANOPY MOUNT

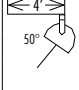
### T1054L 30K 80CRI WALL WASH/FLOOD

#### TRAC 3' FROM WALL

TRAC 3' FROM WALL	Distance from ceiling	Single Fixture Performance					Multiple Fixture Performance									
		0	1'	2'	3'	4'	5'	← 4' →			← 5' →			← 6' →		
 30W LED 30K, 80CRI	1'	152	123	71	32	14	6	165	142	165	158	96	158	154	63	154
	2'	123	105	71	42	21	9	144	141	144	132	110	132	128	83	128
	3'	78	70	52	34	21	12	99	104	99	89	85	89	84	68	84
	4'	48	44	35	26	17	11	65	71	65	59	61	59	55	51	54
	5'	30	38	24	19	14	10	42	48	42	40	42	40	37	37	36
	6'	19	18	16	13	10	8	30	33	30	28	30	28	26	27	25
	7'	13	13	11	10	8	7	21	23	21	20	21	20	18	20	18
	8'	9	9	8	7	6	5	15	16	15	15	16	15	14	15	13
	9'	7	7	6	6	5	4	11	12	12	11	12	11	11	11	10

CRI/CCT Multiplier		
CRI	CCT	Multiplier
80	27K	0.96
	30K	1.00
	35K	1.02
	40K	1.03
90	27K	0.84
	30K	0.87
	35K	0.88
	40K	0.88

#### TRAC 4' FROM WALL

TRAC 4' FROM WALL	Distance from ceiling	Single Fixture Performance					Multiple Fixture Performance									
		0	1'	2'	3'	4'	5'	← 4' →			← 5' →			← 6' →		
 30W LED 30K, 80CRI	1'	74	66	47	27	14	8	89	95	89	82	74	82	79	54	78
	2'	83	74	58	37	33	13	106	113	106	95	93	95	89	75	89
	3'	62	57	46	33	23	14	85	92	85	77	79	77	71	66	71
	4'	44	41	35	26	19	13	64	69	63	57	61	58	53	53	53
	5'	30	29	25	20	15	11	48	51	48	42	46	42	39	41	38
	6'	21	20	18	15	12	9	34	37	34	31	34	31	29	31	28
	7'	15	14	13	12	10	8	25	27	25	23	26	24	22	23	21
	8'	11	11	10	9	7	6	19	20	19	18	19	18	17	18	16
	9'	8	8	7	7	6	5	15	15	15	14	15	15	13	14	12

Fixture	Multiplier
T1050L	0.41
T1051L	0.56
T1052L	0.76
T1053L	0.88
T1054L	1.00
T1056L	1.25
T1058L	1.50

Option/Accessory	Multiplier
MVOLT ZT (No Lens)	1.00
MVOLT PDIM (Standard Clear Glass Lens)	0.92
CPL or CGF RECT3 CLEAR	0.94
DIFF or DIFF RECT3	0.92
UVF RECT3	0.96
HCLBL RECT3	0.31