

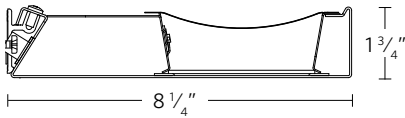
HIGHLIGHTS

- Total System Integration features 5-year limited warranty by Acuity Brands covering all components and construction
- 4' and 8' sections
- Up to 138 lm/W
- Multiple Output packages available
- Softshine®-engineered comfort optics
- Enhanced asymmetric distribution through optical film
- Flicker-free dimming to dark (0.1%) powered by eldoLED® driver
- Flat or sculptured end caps
- White, black, aluminum or custom color



DIMENSIONS

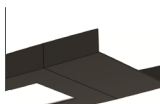
BRW9L



DETAILS

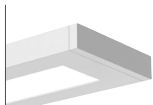


Flat end cap



Sculptured end cap

COMPANION LUMINAIRE(S)



BRM9L Bruno LED

CUSTOMIZATION

Ask us about the following possibilities: Alternate voltages, custom colors and other modifications.

LUMEN PACKAGES

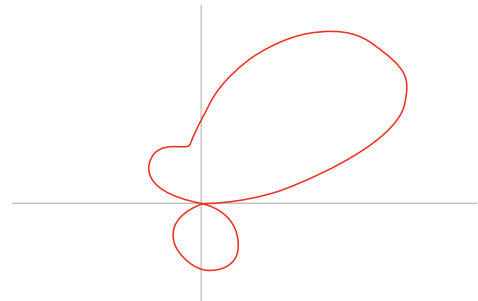
Based on 80CRI @ 3500K.
Additional outputs and color temperatures available.

Direct LED Output	ID500LMF	ID900LMF	ID1400LMF
Total Delivered Lumens Per Foot	1744	2297	1628
Input Watts Per Foot	13.9	20.5	12.8
Lumens Per Watt	125	112	127

*Please pull the appropriate IES file for the hard data number for your luminaire selection

DISTRIBUTION

70% Up | 30% Down



SPECIFICATIONS

Housing

Nominal 8 1/4" x 1 3/4" rectangular housing is formed from cold-rolled steel.

End Caps

Die-cast end caps are mechanically attached with no exposed fasteners. Flat end caps standard. For sculptured end caps, choose option SCEP.

Color

Color for housing and end caps is white, black or painted aluminum. Consult factory for custom colors.

Luminaire Length

4' and 8' nominal lengths in a single section. For total luminaire length, add 5/8" for each flat end cap and 4" for each sculptured end cap. Using internal joiners, 4' and 8' sections can be joined to form longer rows.

Source

Multiple LED lumen packages and five available color temperature options (2700K, 3000K, 3500K, 4000K and 5000K) - all within 2.5 MacAdam ellipses.

Optics

Softshine® optical system consists of high performance lens, diffusers and metal reflectors.

Dimming Driver

eldoLED driver provides "natural dimming" with smooth, continuous and flicker-free operation to 0.1% dim levels. Acuity luminaires incorporating eldoLED LED drivers perform within the recommended operating areas for flicker as a function of frequency and modulation (%) outlined in IEEE Standard 1789-2015 (IEEE Recommended Practices for Modulating Current in High-Brightness LEDs for Mitigating Health Risks to Viewers), in typical operating conditions at representative dimming levels. Syncing for controls: 2mA max. THD: < 20%. Insignificant inrush current at 120 and 277VAC. FCC Class A and B tested for EMI and RFI. When Control Input of 0-10V is specified driver will be set for linear dimming curve. EldoLED Driver for MIN1 and DARK only.

Electrical

LED light engine — consisting of modular LED boards and eldoLED® dimming driver — is rated for 60,000 hours (L80) at 25° C ambient temperature. Specify 120V or 277V. Pre-wired with 16AWG fixture wire. For special circuiting or wire gauge, consult factory. Plug-in electrical connectors included.

Environment

Suitable for Damp location.

Validation

CSA/CUS listed. CSA tested to UL 1598 standards.

LM-79 tested. Individual sections meet FCC Part 15 requirements. Lighting Facts partner.

Packaging

100% post-consumer recycled cardboard box and inserts. Biodegradable, protective luminaire bag. Recycled kraft paper tape.

Warranty

5-year limited warranty. Complete warranty terms located at www.acuitybrands.com/support/warranty/terms-and-conditions

Note: Actual performance may differ as a result of end-user environment and application.

All values are design or typical values, measured under laboratory conditions at 25°C.

A+ Capable Luminaire

This item is an A+ capable luminaire, which has been designed and tested to provide consistent color appearance and out-of-the-box control compatibility with simple commissioning.

- All configurations of this luminaire meet the Acuity Brands' specification for chromatic consistency

To learn more about A+, visit www.acuitybrands.com/aplus.

*See ordering tree for details

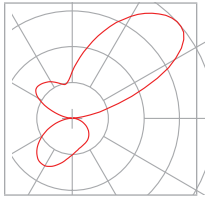


A+ Capable options indicated
by this color background.

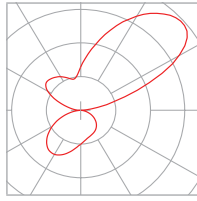
MODEL NUMBER Example: BRW9L LLP 16FT MSL8 80CRI 35K ID600LMF DARK ZT 120 SCT C110

Luminaire	Linear Length Plan	Total Run Length	Maximum Section Length	LED Color Rendering	LED Color Temperature	Indirect/Direct LED Ouput
BRW9L	LLP Linear longest possible LSL Longest same length	__FT Indicate luminaire row length in 4' increments. Ex: 12FT	MSL4 4' section(s) MSL8 8' section(s)	80CRI 80+ CRI 90CRI 90+ CRI	27K 2700K 30K 3000K 35K 3500K 40K 4000K 50K 5000K	ID500LMF 500 Nominal lumens per foot ID600LMF 600 Nominal lumens per foot ID700LMF 700 Nominal lumens per foot ID800LMF 800 Nominal lumens per foot ID900LMF 900 Nominal lumens per foot ID1000LMF 1000 Nominal lumens per foot ID1100LMF 1100 Nominal lumens per foot ID1200LMF 1200 Nominal lumens per foot ID1300LMF 1300 Nominal lumens per foot ID1400LMF 1400 Nominal lumens per foot ID1500LMF 1500 Nominal lumens per foot ID1600LMF 1600 Nominal lumens per foot ID1700LMF 1700 Nominal lumens per foot ID1800LMF 1800 Nominal lumens per foot ID1900LMF 1900 Nominal lumens per foot ID2000LMF 2000 Nominal lumens per foot
Minimum Dimming Level		Control Input	Voltage	Wiring Option	Emergency Options	
DARK	Constant current, dimming to < 1%	ZT* 0-10V	120 120V	SCT Single circuit	(Blank) None	
MIN1	Constant current, dimming to 1%	DALI** DALI Enabled *0-10V will use linear dimming curve. ** Will use Logarithmic dimming curve	277 277V MVOLT 120V-277V		1EC (1) emergency circuit module 2EC (2) emergency circuit module __EC ____ emergency circuit modules *Emergency type is installed in last 4' of luminaire sections. Separate feed required. ** 4FT MSL4 Individual fixture with EC Consult factory	
Color			Options			
C110	Painted aluminum (low gloss)		CSA*	Manufactured to Canadian standards		GLR Fast blow
C210	White white (fine textured)		DU	Dust cover		GMF Slow blow
C202	Black (fine textured)					SCEP Sculptured end caps
C099**	Custom color					*CSA with EC consult factory
RALTB*	RAL Paint finishes					
*RALTB for pricing only. Replace with applicable RAL number and finish when ready to order. See the RAL BROCHURE for available color options. Standard finish choice is Textured (RALxxxxT)						
**C099 for pricing only. Custom color chip and requested finish needs to be sent in to your Customer Care Rep and matched up with our paint department and customer approved before order is entered. Standard finish choice is Textured (C099T)						

FIXTURE PERFORMANCE DATA



ID600LMF 80CRI 35K
137 lm/W
2633 delivered lumens
per 4' section



ID1700LMF 80CRI 35K
117 lm/W
8345 delivered lumens
per 4' section

How to Calculate Delivered Lumens in Emergency Mode

Use the formula below to determine the delivered lumens in emergency mode

$$\text{Delivered Lumens} = 1.25 \times P \times \text{LPW}$$

P = Output power of emergency driver. P = 10W for E10WLCP option.

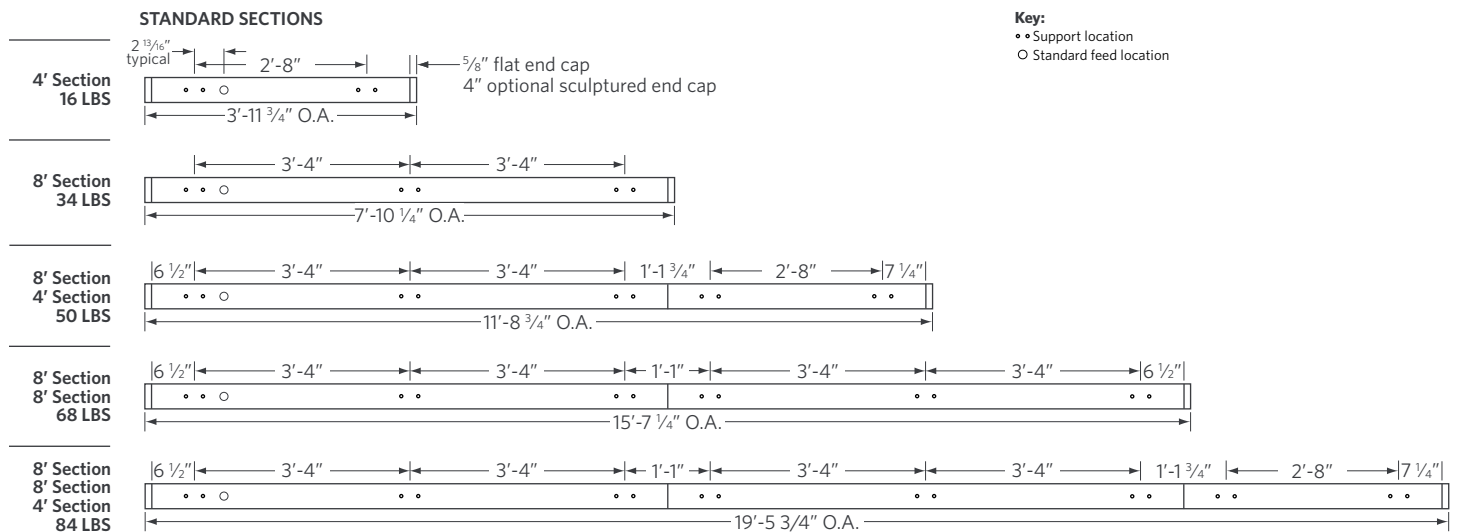
LPW = Lumen per watt rating of the luminaire. This information is available on the ABL luminaire spec sheet. LPW = Lumen per watt rating of the luminaire. LPW information available in Performance Data section.

CCT SCALING CHART

CCT	CRI	MULTIPLIER
27K	80CRI	0.96
30K	80CRI	0.99
35K	80CRI	1
40K	80CRI	1
50K	80CRI	1.05
27K	90CRI	0.81
30K	90CRI	0.83
35K	90CRI	0.85
40K	90CRI	0.86
50K	90CRI	0.92

WEIGHTS & SUPPORT SPACING

Mounting spacing equals section length. Default location shown.



ELEVATION

LINEAR PLAN:

PEERLESS offers the ability to provide a continuous run plan to suit your requirements by optionally offering three different methods of configuration.

LSL- Linear Same Length

In this configuration, each segment is the same length and is standardized based on the longest length available and is the only option provided. Because it is dependent on one segment length there are mathematical limitations on what overall row lengths can be achieved. Example: 20 FT row would be achieved with 5, 4 FT long segments equaling 20 FT (nominal).

LSL	4FT	4FT	4FT	4FT	4FT
-----	-----	-----	-----	-----	-----

LLP- Linear Longest Possible

In this configuration, the longest length available is optimized, resulting in the fewest segments and mounting locations. Caution, should be used where balanced appearance is a concern. Example: 20 FT run would have 2, 8 FT segment and 1, 4 FT segment at the end of the run.

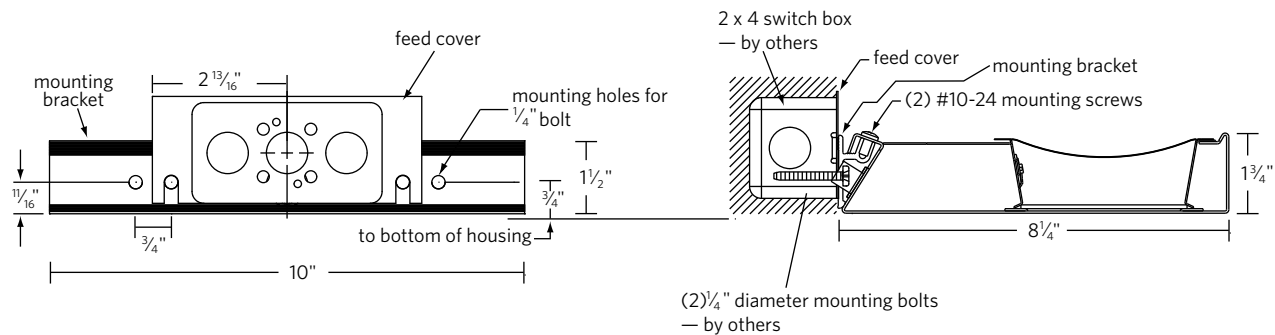
LLP	8 FT	8 FT	4FT
-----	------	------	-----

LCB- Linear Center Balanced

In this configuration incorporates the longest center segments(s) along with any additional lengths required to fill the run length, added to the run ends. Example 20 FT run would have 2, 8 FT segments (one at each end) and 1, 4 FT segment in the center

LCB	8 FT	4FT	8 FT
-----	------	-----	------

MOUNTING DETAIL



INTELLIGENT LUMINAIRE TECHNOLOGY GUIDE

Choose nomenclature from these columns							
Driver Configurations	Minimum Dimming Level		Control Input		Driver	Dimming Range	Notes
	DARK	+	ZT	=	eldoLED SoloDrive	100% to .1%	Linear Dimming, supplied with leads for 0-10V control
	DARK	+	DALI	=	eldoLED SoloDrive	100% to .1%	Logarithmic Dimming, DALI controls and power supply by others
	MIN1	+	ZT	=	eldoLED EcoDrive	100% to 1%	Linear Dimming, supplied with leads for 0-10V control

eldoLED COMPATIBILITY For compatible dimmers & switches please see the EldoLED compatibility document.

PeerlessLighting.com/eldoLED-compatibility