



## Juno® Trac TSL0T1 Series Linear Ambient Track Fixtures

Linear fixtures that enable a single lighting system to deliver both accent and ambient illumination

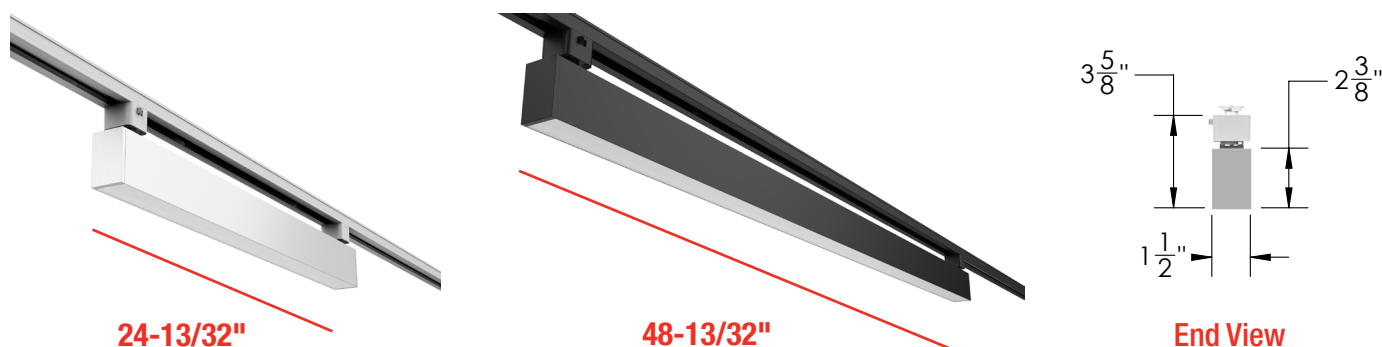


# Linear Simplicity

Nothing could simplify life more for architects and lighting designers than specifying a single lighting system that delivers both accent and ambient illumination – and does both exceedingly well. Installers will also appreciate needing to only run a single power plane. Juno Trac Linear Ambient makes lighting a breeze on so many levels.

## End-to-End Illumination

Available in 2ft and 4ft versions, Juno Trac TSL0T1 Series Linear Ambient luminaires can be installed end-to-end to simulate continuous illumination or spaced apart to integrate accent luminaires where needed. Its 1-1/2" width mimics the track profile and its 2-3/8" height minimizes visual intrusion into the physical space.



## Features:

- Up to 1000 lumens per foot with  $L_{75}$  performance of over 100,000 hours
- High-performance 2700K, 3000K, 3500K, 4000K, or 5000K CCT LEDs
- Up to 115 LPW efficacy
- Standard 90 CRI minimum
- LED array provides exceptional reliability and chromaticity within a 2.5-step MacAdam Ellipse for outstanding fixture-to-fixture color consistency
- Available in black, silver, or white powdercoat paint finishes
- LED driver is integrated within the fixture housing to maximize thermal efficiency and minimize overall fixture footprint
- Fixtures may be specified with alternate track adapters, enabling these fixtures to be compatible with most non-Juno branded track systems





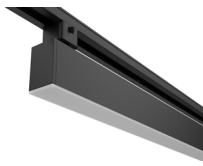


## Diffusers/Shielding Options

TSL0T1 fixtures are available with standard flush lens, edge view lens, a variety of drop lens sizes, or deep cell quiet ceiling baffles.



Flush Lens



Edge View Lens



1/2" Drop Lens



1" Drop Lens



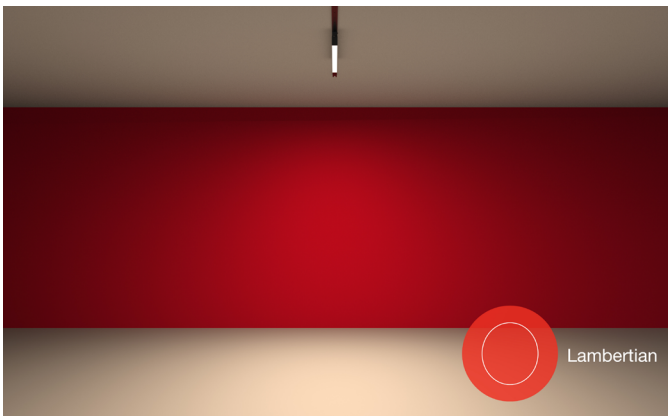
1-1/2" Drop Lens



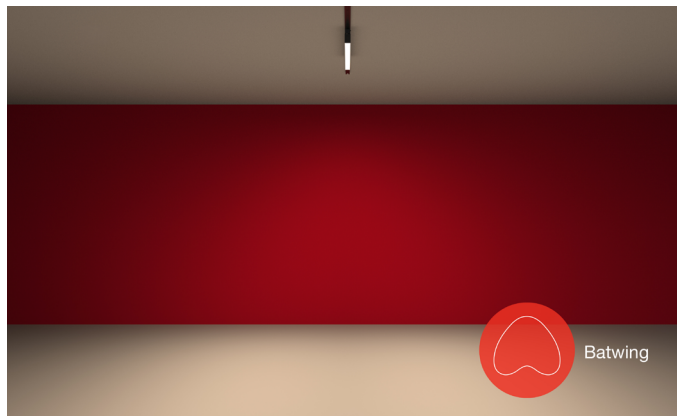
Quiet Ceiling Baffle

## Layer On The Light

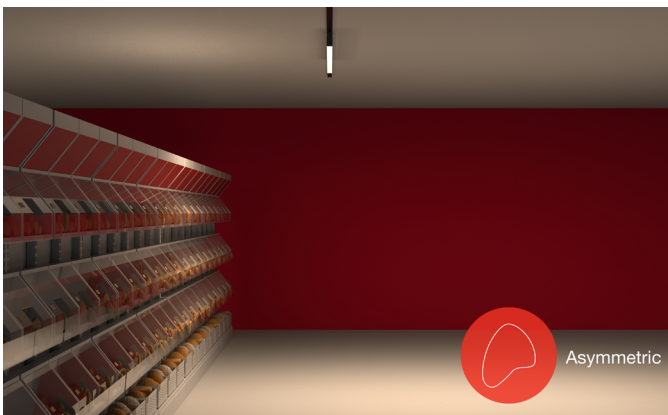
Juno Trac TSL0T1 Series Linear Ambient significantly expands the lighting designer's tool kit. Now a single system can deliver both accent and ambient illumination in a range of distributions, including Lambertian, asymmetric, batwing, and wall wash.



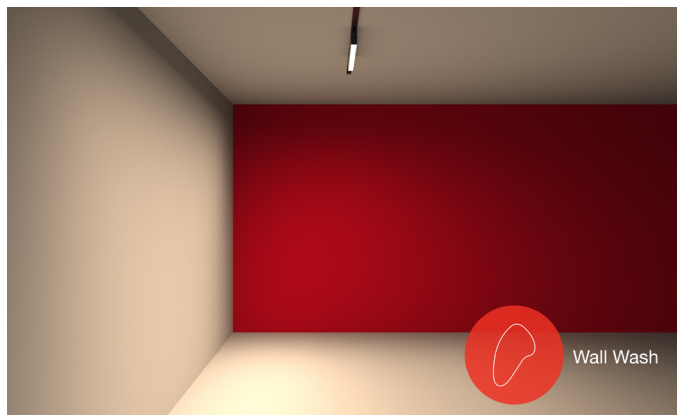
Lambertian



Batwing



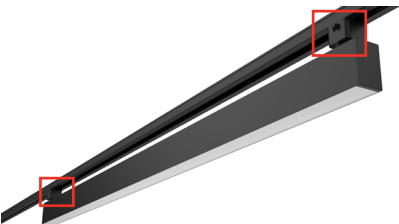
Asymmetric



Wall Wash

# Universal Compatibility

Alternate mounting adapters make connecting to competing systems a snap... literally. An indispensable feature when retrofitting/renovating.



## Juno® Trac TSL0T1 Series Linear Ambient Track Fixtures

### Ordering Information

Series	Mounting Adapter Type	Nominal Length	Light Output	Color Temperature	Color Rendering Index	Dimming Compatibility	Beam Distribution
<b>TSL0T1</b> 10W/18W/20W/36W LED Linear Ambient Fixture	<b>(Blank)</b> Juno Universal 120V Track Adapter	<b>2FT</b> 2' length	<b>600LMF</b> 600 Lumens/ft.	<b>27K</b> 2700K	<b>90CRI</b> 90 CRI	<b>OFF</b> On/Off (Non-dimming)	<b>LAM</b> Lambertian Distribution
	<b>HTEK</b> HTEK 277V Track Adapter	<b>4FT</b> 4' length	<b>1000LMF</b> 1000 Lumens/ft.	<b>30K</b> 3000K			<b>DAS*</b> Direct Asymmetric Distribution
	<b>TEK</b> TEK 120V Track Adapter			<b>35K</b> 3500K			<b>DBW*</b> Direct Batwing Distribution
	<b>GTYPE</b> G-Type Track Adapter			<b>40K</b> 4000K			<b>WW*</b> Wide Flood
	<b>HTYPE</b> TEK 120V Trac Adapter						
	<b>LTYPE</b> L-Type Track Adapter						

\*DAS, DBW, & WW beam distribution options only available with flush lens which is co-extruded with white and clear material.



Diffusers/Shielding	Finish
<b>FLL</b> Flush Lens	<b>BL</b> Black
<b>EGLD</b> Edge Glow Direct Lens	<b>SL</b> Silver
<b>DRP05</b> Drop Lens 1/2IN	<b>WH</b> White
<b>DRP1</b> Drop Lens 1IN	
<b>DRP15</b> Drop Lens 1 1/2IN	
<b>QCBFB</b> Quiet Ceiling Baffle, Black	
<b>QCBFS</b> Quiet Ceiling Baffle, Silver	
<b>QCBFW</b> Quiet Ceiling Baffle, White	