

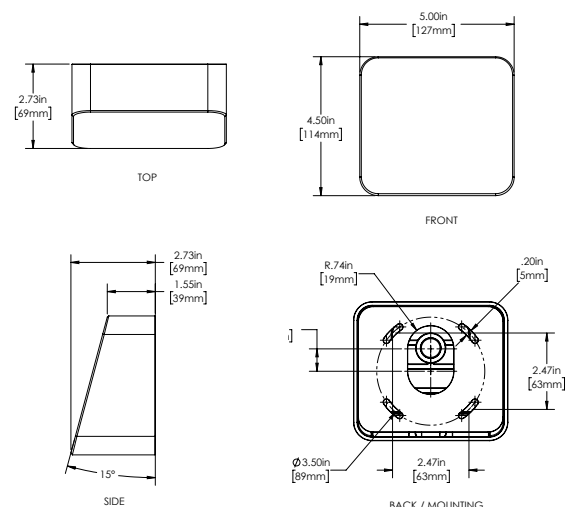
# WANDER

## Pathway and Step Light Family

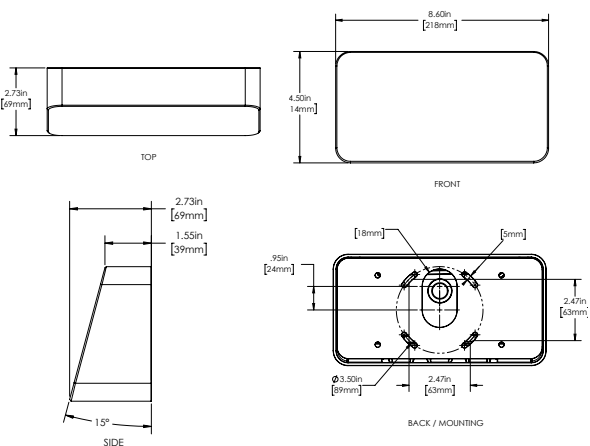
### Surface Mount



### DIMENSIONS



WANDER1



WANDER3

### HIGHLIGHTS

- Available in 2 sizes and can be mounted downward facing for pathway and step applications or upward facing for indirect lighting applications
- Sturdy die-cast body with IK10 impact rating
- Mounts to standard 4" octagonal j-box (provided by others)
- Integral driver
- IP66 Rated
- Precision acrylic optic available in 3 tailored distributions
- Industry leading performance with up to 1000 delivered lumens
- Ideal solution for retrofit applications
- Achieve excellent uniformity and meet egress lighting requirements with fixture spacings of up to 16' on-center (18" mounting height).
- Fully shielded, BUG U-0 rating
- ADA-compliant design

5  
YEAR  
warranty

LED

66  
IP RATED

BAA

BABA

IK10  
RATED  
LUMINAIRE

### PERFORMANCE SUMMARY

Model	Performance Package	Distribution	Delivered Lumens	Watts	LPW
WANDER1	P1	SW	353	4.4	80
		MW	357	4.4	81
		LM	356	4.4	81
WANDER3	P1	SW	1200	12.7	94
		MW	1190	12.7	94
		LM	1192	12.7	94

Note: Information based on 4000K

### STANDARD DISTRIBUTION



Short Forward, Wide Lateral Distribution (SW)



Medium Forward, Wide Lateral (MW)



Long Forward, Medium Lateral Distribution (LM)

## ORDERING INFORMATION

EXAMPLE: WANDER1 SM P1 90CRI 27K MVOLT LM ZT BL

Model*		Style*		Performance Package*		CRI		Color Temperature*		Voltage*		Distribution*	
WANDER1	One Optic Pathway Light	SM	Surface Mount (Octagon box by others)	P1	90CRI	Note: 90CRI is only required with 27K, 30K, 35K and 40K	27K	2700K	MVOLT	MultiVolt 120V thru 277V	SW	Short Forward, Wide Lateral Distribution	
WANDER3	Three Optic Pathway Light						30K	3000K					
							35K	3500K					
							40K	4000K					
							AMBLW	Amber Limited Wavelength 590nm					
		RED	Red	LM	Long Forward, Medium Lateral Distribution								
		GRN	Green										
		BLU	Blue										

Control Input*		Finish*																			
ZT	0-10V Dimming (Dims to Dark)	BL	Black Textured	DNA	Natural Aluminum																
ELV	Reverse Phase	BRS	Bronze Smooth	NBS	Natural Bronze Smooth																
		BRT	Bronze Textured	WH	White Textured																
		DBL	Black Smooth	WHS	White Smooth																
		DDB	Designer Bronze	_Z	Zinc Undercoat (Example BLZ)																
				CF																	
				RALTBD	Ral Paint Finishes																
		Note: RALTBD for pricing only, replace with applicable RAL call out when ready to order. See the <a href="#">RALBROCHURE</a> for available options. It is recommended that Hydrel products only use textured paint.																			
		Note: Zinc Undercoat provides corrosion protection for Marine Environment and Natatorium Construction																			

Note: \* is required field.

## PERFORMANCE DATA

### LUMEN OUTPUT - WANDER1 SM

Lumen values are from photometric tests performed in accordance with IESNA LM-79-08. Data is considered to be representative of the configurations shown, within the tolerances allowed by Lighting Facts. Actual performance may differ as a result of end-user environment and application. Contact factory for performance data on any configurations not shown here

Performance Package	System Watts	Distribution Type	27K (2700K, 90CRI)			30K (3000K, 90CRI)			35K (3500K, 90CRI)			40K (4000K, 90CRI)		
			Lumens	LPW	BUG	Lumens	LPW	BUG	Lumens	LPW	BUG	Lumens	LPW	BUG
P1	4.4	SW	295	67	B0-U0-G1	319	73	B0-U0-G1	340	77	B0-U0-G1	353	80	B0-U0-G1
		MW	299	68	B0-U0-G1	323	73	B0-U0-G1	344	78	B0-U0-G1	357	81	B0-U0-G1
		LM	298	68	B0-U0-G1	322	73	B0-U0-G1	342	78	B0-U0-G1	356	81	B0-U0-G1

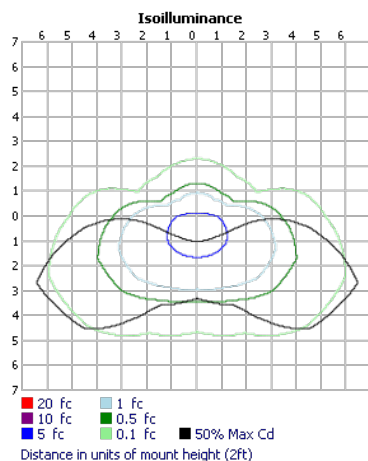
Performance Package	System Watts	Distribution Type	AMBLW		
			Lumens	LPW	BUG
P1	4.6	SW	187	41	B0-U0-G1
		MW	188	41	B0-U0-G1
		LM	184	40	B0-U0-G1

### LUMEN OUTPUT - WANDER3 SM

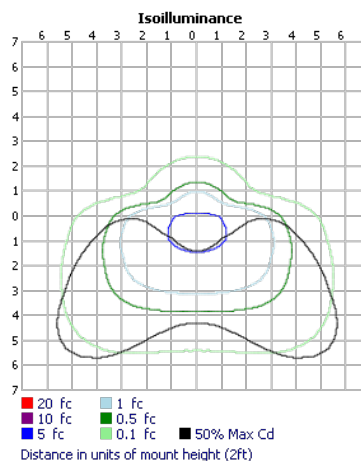
Performance Package	System Watts	Distribution Type	27K (2700K, 90CRI)			30K (3000K, 90CRI)			35K (3500K, 90CRI)			40K (4000K, 90CRI)		
			Lumens	LPW	BUG	Lumens	LPW	BUG	Lumens	LPW	BUG	Lumens	LPW	BUG
P1	12.7	SW	1004	79	B0-U0-G1	1085	85	B0-U0-G1	1154	91	B0-U0-G1	1200	94	B0-U0-G1
		MW	995	78	B0-U0-G1	1075	85	B0-U0-G1	1144	90	B0-U0-G1	1190	94	B0-U0-G1
		LM	998	79	B0-U0-G1	1078	85	B0-U0-G1	1147	90	B0-U0-G1	1192	94	B0-U0-G1

Performance Package	System Watts	Distribution Type	AMBLW		
			Lumens	LPW	BUG
P1	13.2	SW	533	40	B0-U0-G1
		MW	523	40	B0-U0-G1
		LM	512	39	B0-U0-G1

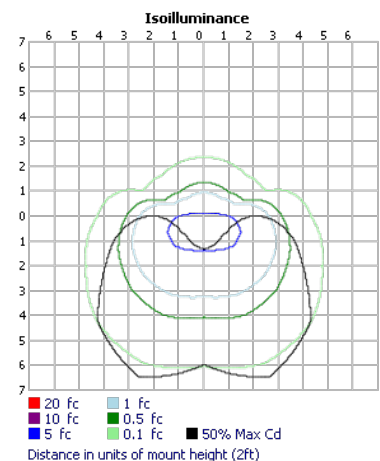
### ISO CANDELA PLOTS



Based on WANDER1 P1 30K SW



Based on WANDER1 P1 30K MW



Based on WANDER1 P1 30K LM

## ELECTRICAL LOAD

### WANDER1 SM

Light Engines	Drive Current (ma)	System Watts	Input Current (A)			
			120	208	240	277
P1	550mA	4.4	0.038	0.023	0.021	0.019
AMBLW	550mA	4.6	0.038	0.023	0.021	0.019

### WANDER3 SM

Light Engines	Drive Current (ma)	System Watts	Input Current (A)			
			120	208	240	277
P1	550mA	12.7	0.107	0.063	0.056	0.05
AMBLW	550mA	13.2	0.107	0.063	0.056	0.05

## PROJECTED LED LUMEN MAINTENANCE

Data references the extrapolated performance projections for the Fixture platform in a 25°C ambient, based on 20,000 hours of LED testing (tested per IESNA LM-80-08 and projected per IESNA TM-21-11). To calculate LLF, use the lumen maintenance factor that corresponds to the desired number of operating hours below. For other lumen maintenance values, contact factory.

### WANDER1/WANDER3

Operating Hours	0	20,000	40,000	60,000
Lumen Maintenance Factor	1	0.99	0.9598	0.9222

## LUMEN AMBIENT TEMPERATURE (LAT) MULTIPLIERS

Use these factors to determine relative lumen output for average ambient temperatures from 0-40°C (32-104°F).

### WANDER1/WANDER3

Ambient		Lumen Multiplier	Amber Lumen Multiplier
0°C	32°F	1.03	1.30
10°C	50°F	1.02	1.17
20°C	68°F	1.01	1.05
25°C	77°F	1.00	1.00
30°C	86°F	0.99	0.95
40°C	104°F	0.98	0.84

## FEATURES & SPECIFICATIONS

**INTENDED USE:** To provide optimal pathway and building perimeter illumination achieving best uniformity and spacing criteria in product class. Provides visual continuity throughout the space when used alongside the pedestal or semi- recessed mount Wander family luminaires.

**MATERIAL:** Extruded corrosion resistant aluminum

**LIGHT SOURCE:** Proprietary precision high clarity acrylic optic / micro optical assembly with correlated color temperatures (CCT) of 2700K, 3000K, 3500K, 4000K, (90CRI) AMBLW, RED, GREEN and BLUE. All within 3 MacAdam ellipses.

**DISTRIBUTION:** Available in SW (Short Forward, Wide Lateral), MW (Medium Forward, Wide Lateral) and LM (Long Forward, Medium Lateral)

**VOLTAGE:** MVOLT 120V-277V 50/60Hz

**MOUNTING:** Mounts to standard 4" octagonal j-box (provided by others)

**FEATURES:** Hydrel Exclusive "Flow-Thru" technology, featuring independently encapsulated LED module and Integral Driver

**ENVIRONMENT:** Wet location

**LISTING:** cCSAus, Suitable for outdoor & wet location. IP66 rated

**LED LIFE:** Reported L80 @>120,000 hours

**FINISH:** Exterior parts are protected by a zinc-infused durable TGIC thermoset powder coat finish that provides superior resistance to corrosion and weathering. A tightly controlled multi-stage process ensures a minimum 3 mils thickness for a finish that can withstand extreme climates without cracking or peeling

**GOVERNMENT PROCUREMENT:** BAA – Buy America(n) Act: Product qualifies as a domestic end product under the Buy American Act as implemented in the FAR and DFARS. Product also qualifies as manufactured in the United States under DOT Buy America regulations. BABA – Build America Buy America: Product qualifies as produced in the United States under the definitions of the Build America, Buy America Act. Please refer to [www.acuitybrands.com/resources/buy-american](http://www.acuitybrands.com/resources/buy-american) for additional information

**WARRANTY:** 5-year limited warranty. This is the only warranty provided and no other statements in this specification sheet create any warranty of any kind. All other express and implied warranties are disclaimed. Complete warranty terms located at: [www.acuitybrands.com/support/warranty/terms-and-conditions](http://www.acuitybrands.com/support/warranty/terms-and-conditions)

Consult factory for details

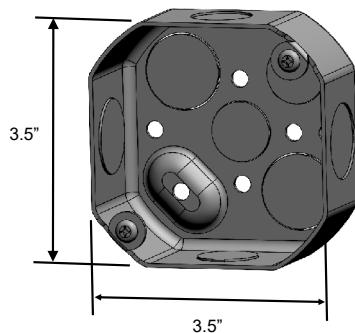
**NOTE:** Actual performance may differ as a result of end-user environment and application. All values are design or typical values, measured under laboratory conditions at 25 °C. Specifications subject to change without notice

### Specifications

Model:	Weight:
WANDER1 SM	2.55 lbs.
WANDER3 SM	4.00 lbs.

## MOUNTING DETAIL

Typical octagonal junction box



### Suggested Octagonal Boxes:

Hubbel/Raco 127  
Hubbel/Raco 81052  
Orbit Industries D4RB