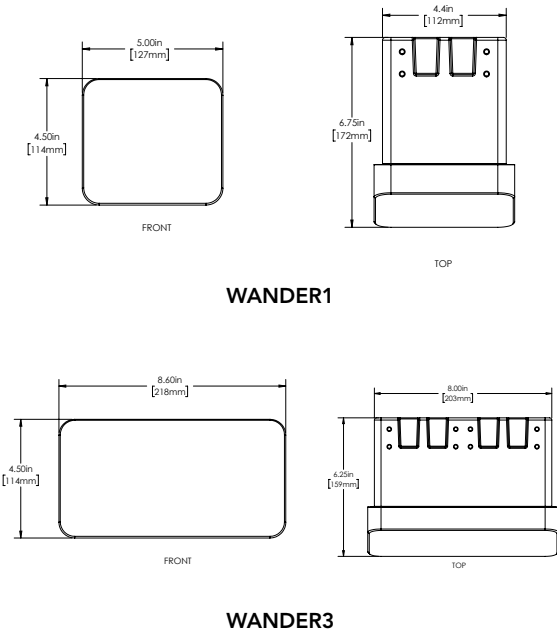




## DIMENSIONS



# WANDER

## Pathway and Step Light Family

### Semi-Recessed Mount

#### HIGHLIGHTS

- Available in 2 sizes and can be mounted downward facing for pathway and step applications or upward facing for indirect lighting applications
- Sturdy die-cast body with IK10 impact rating
- Mounts to recessed backbox (provided standard) that serves as integral driver compartment and j-box
- Hydrel Exclusive "Flow-Thru" technology, featuring independently encapsulated LED module and Driver module
- IP67 Rated
- Precision acrylic optic available in 3 tailored distributions
- Industry leading performance with up to 1500 delivered lumens
- Achieve excellent uniformity and meet egress lighting requirements with fixture spacings of up to 18' on-center (@ 18" mounting height).
- Fully shielded, BUG U-0 rating
- ADA-compliant design

**5**  
YEAR  
warranty

**LED**

**67**  
IP RATED

**BAA**

**BABA**

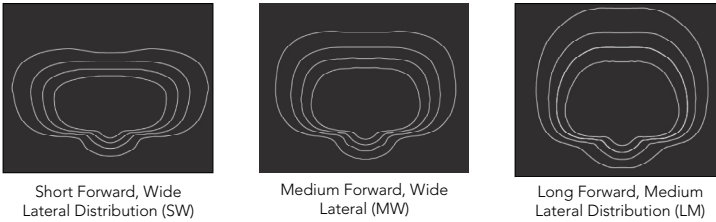
**IK10**  
RATED  
LUMINAIRE

#### PERFORMANCE SUMMARY

Model	Performance Package	Distribution	Delivered Lumens	Watts	LPW
WANDER1	P1	SW	353	4.4	80
		MW	357	4.4	81
		LM	356	4.4	81
	P2	SW	716	10.2	70
		MW	724	10.2	71
		LM	722	10.2	71
WANDER3	P1	SW	1200	12.7	94
		MW	1190	12.7	94
		LM	1192	12.7	94
	P2	SW	1821	21.3	85
		MW	1806	21.3	85
		LM	1809	21.3	85

Note: Based on 4000K

#### STANDARD DISTRIBUTION



## ORDERING INFORMATION

EXAMPLE: WANDER1 SRM P1 90CRI 27K MVOLT LM 12BCK ZT BL

Model*		Style*		Performance Package*	CRI	Color Temperature*		Voltage*		Distribution*					
WANDER1	One Optic Pathway Light	SRM	Semi Recessed Mount (back box)	P1	90CRI	27K	2700K	MVOLT	MultiVolt 120V thru 277V	SW	Short Forward, Wide Lateral Distribution				
WANDER3	Three Optic Pathway Light			P2		30K	3000K					AMBLW	Amber Limited Wavelength 590nm	12	12Volt
				Note: P2 is not available with AMBLW, RED, GRN and BLU		35K	3500K								
				Note: 90CRI is only required with 27K, 30K, 35K and 40K	40K	4000K	LM	Long Forward, Medium Lateral Distribution							
					RED	Red									
					GRN	Green									
						BLU	Blue								
						Note: AMBLW, RED, GRN and BLU are not available with P2									

Conduit Entries*		Control Input		Finish*	
12BCK	Standard (2) 1/2"NPT two on the back	ZT	0-10V Dimming (Dims to Dark)	BL	Black Textured
12BTM	(2) 1/2"NPT two on the bottom	ELV	Reverse Phase	BRS	Bronze Smooth
12S	(2) 1/2"NPT one on each side		ZT and ELV options are not available with 12V	BRT	Bronze Textured
				DBL	Black Smooth
				DDB	Designer Bronze

Note: \* is required field.

## PERFORMANCE DATA

### LUMEN OUTPUT - WANDER1 SRM

Lumen values are from photometric tests performed in accordance with IESNA LM-79-08. Data is considered to be representative of the configurations shown, within the tolerances allowed by Lighting Facts. Actual performance may differ as a result of end-user environment and application. Contact factory for performance data on any configurations not shown here

Performance Package	System Watts	Distribution Type	27K (2700K, 90CRI)			30K (3000K, 90CRI)			35K (3500K, 90CRI)			40K (4000K, 90CRI)		
			Lumens	LPW	BUG	Lumens	LPW	BUG	Lumens	LPW	BUG	Lumens	LPW	BUG
P1	4.4	SW	295	67	B0-U0-G1	319	73	B0-U0-G1	340	77	B0-U0-G1	353	80	B0-U0-G1
		MW	299	68	B0-U0-G1	323	73	B0-U0-G1	344	78	B0-U0-G1	357	81	B0-U0-G1
		LM	298	68	B0-U0-G1	322	73	B0-U0-G1	342	78	B0-U0-G1	356	81	B0-U0-G1
P2	10.2	SW	599	59	B0-U0-G1	647	63	B0-U0-G1	688	67	B0-U0-G1	716	70	B0-U0-G1
		MW	606	59	B0-U0-G1	655	64	B0-U0-G1	696	68	B0-U0-G1	724	71	B0-U0-G1
		LM	604	59	B0-U0-G1	652	64	B0-U0-G1	694	68	B0-U0-G1	722	71	B0-U0-G1

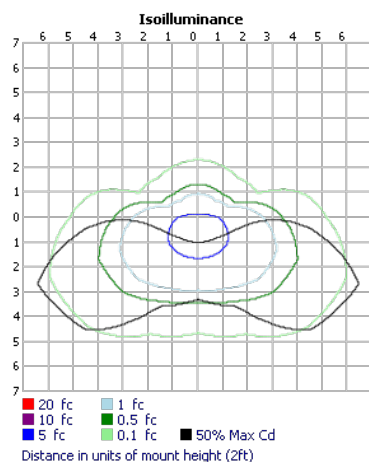
Performance Package	System Watts	Distribution Type	AMBLW		
			Lumens	LPW	BUG
P1	4.6	SW	187	41	B0-U0-G1
		MW	188	41	B0-U0-G1
		LM	184	40	B0-U0-G1

### LUMEN OUTPUT - WANDER3 SRM

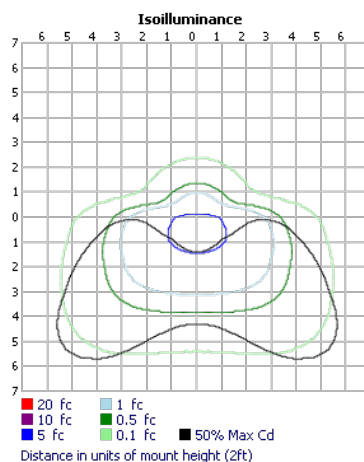
Performance Package	System Watts	Distribution Type	27K (2700K, 90CRI)			30K (3000K, 90CRI)			35K (3500K, 90CRI)			40K (4000K, 90CRI)		
			Lumens	LPW	BUG	Lumens	LPW	BUG	Lumens	LPW	BUG	Lumens	LPW	BUG
P1	12.7	SW	1004	79	B0-U0-G1	1085	85	B0-U0-G1	1154	91	B0-U0-G1	1200	94	B0-U0-G1
		MW	995	78	B0-U0-G1	1075	85	B0-U0-G1	1144	90	B0-U0-G1	1190	94	B0-U0-G1
		LM	998	79	B0-U0-G1	1078	85	B0-U0-G1	1147	90	B0-U0-G1	1192	94	B0-U0-G1
P2	21.3	SW	1523	72	B0-U0-G1	1646	77	B0-U0-G1	1751	82	B0-U0-G1	1821	85	B0-U0-G2
		MW	1510	71	B0-U0-G1	1632	77	B0-U0-G1	1736	82	B0-U0-G2	1806	85	B0-U0-G2
		LM	1514	71	B0-U0-G1	1635	77	B0-U0-G1	1740	82	B0-U0-G1	1809	85	B0-U0-G1

Performance Package	System Watts	Distribution Type	AMBLW		
			Lumens	LPW	BUG
P1	13.2	SW	533	40	B0-U0-G1
		MW	523	40	B0-U0-G1
		LM	512	39	B0-U0-G1

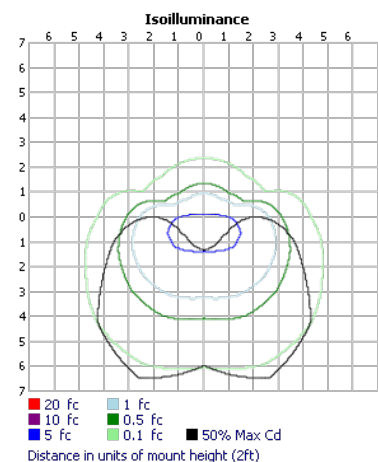
### ISO CANDELA PLOTS



Based on WANDER1 P1 30K SW



Based on WANDER1 P1 30K MW



Based on WANDER1 P1 30K LM

## ELECTRICAL LOAD

### WANDER1 SRM

Light Engines	Drive Current	System Watts	Input Current (A)			
			120	208	240	277
P1	550mA	4.4	0.038	0.024	0.022	0.02
P2	1200mA	10.2	0.089	0.052	0.045	0.04
AMBLW	667mA	4.6	0.04	0.025	0.022	0.021

### WANDER3 SRM

Light Engines	Drive Current	System Watts	Input Current (A)			
			120	208	240	277
P1	625mA	12.7	0.106	0.063	0.056	0.05
P2	1025mA	21.3	0.181	0.106	0.093	0.082
AMBLW	780mA	13.2	0.112	0.066	0.059	0.052

## PROJECTED LED LUMEN MAINTENANCE

Data references the extrapolated performance projections for the Fixture platform in a 25°C ambient, based on 20,000 hours of LED testing (tested per IESNA LM-80-08 and projected per IESNA TM-21-11). To calculate LLF, use the lumen maintenance factor that corresponds to the desired number of operating hours below. For other lumen maintenance values, contact factory.

### WANDER1/WANDER3

Operating Hours	0	20,000	40,000	60,000
Lumen Maintenance Factor	1	0.99	0.9598	0.9222

## LUMEN AMBIENT TEMPERATURE (LAT) MULTIPLIERS

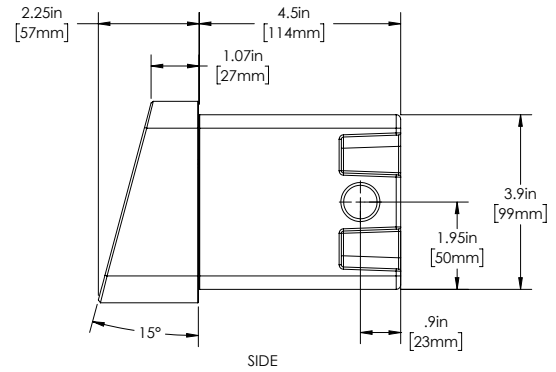
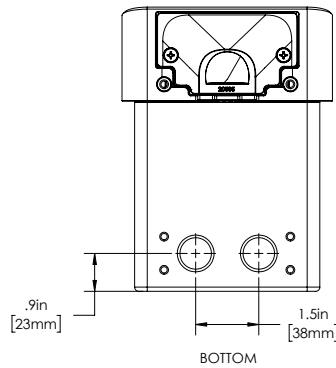
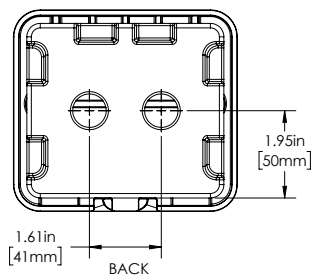
Use these factors to determine relative lumen output for average ambient temperatures from 0-40°C (32-104°F).

### WANDER1/WANDER3

Ambient		Lumen Multiplier	Amber Lumen Multiplier
0°C	32°F	1.03	1.30
10°C	50°F	1.02	1.17
20°C	68°F	1.01	1.05
25°C	77°F	1.00	1.00
30°C	86°F	0.99	0.95
40°C	104°F	0.98	0.84

## WANDER1 BACK BOX DIMENSIONS

Note: Back Box ships separately



### CONDUIT ENTRY:

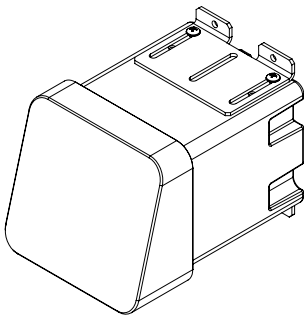
12BCK Standard (2) 1/2" NPT Back

### CONDUIT ENTRY:

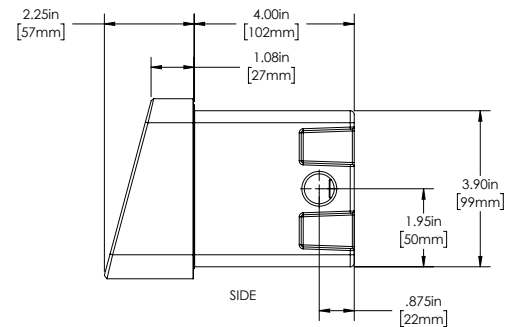
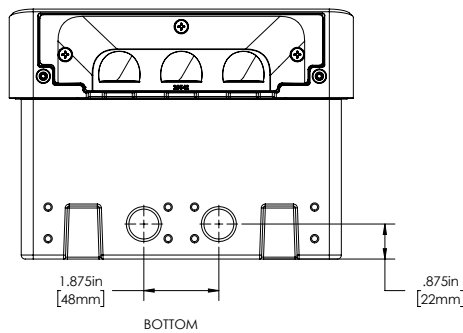
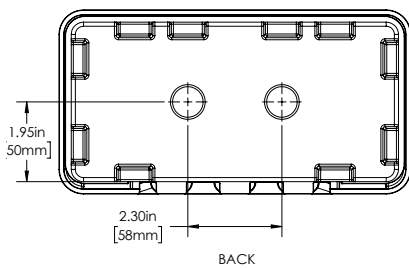
12BTM (2) 1/2" NPT Bottom

### CONDUIT ENTRY:

12S (2) 1/2" NPT Side



## WANDER3 BACK BOX DIMENSIONS



### CONDUIT ENTRY:

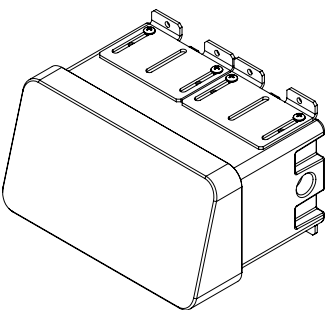
12BCK Standard (2) 1/2" NPT Back

### CONDUIT ENTRY:

12BTM (2) 1/2" NPT Bottom

### CONDUIT ENTRY:

12S (2) 1/2" NPT Side



## FEATURES & SPECIFICATIONS

**INTENDED USE:** To provide optimal pathway and building perimeter illumination achieving best uniformity and spacing criteria in product class. Provides visual continuity throughout the space when used alongside the pedestal or surface mount Wander family luminaires.

**MATERIAL:** Corrosion resistant die cast low copper aluminum.

**LIGHT SOURCE:** Proprietary precision high clarity acrylic optic / micro optical assembly with correlated color temperatures (CCT) of 2700K, 3000K, 3500K, 4000K, (90CRI) AMBLW, RED, GREEN and BLUE. All within 3 MacAdam ellipses

**DISTRIBUTION:** Available in SW (Short Forward, Wide Lateral), MW (Medium Forward, Wide Lateral) and LM (Long Forward, Medium Lateral)

**VOLTAGE:** Available in MVOLT 120V-277V 50/60Hz and 12V. 12 volt requires a remote transformer.

**MOUNTING:** Back Box offered as standard 12BCK with (2) 1/2" NPT on the back or 12BTM with (2) 1/2" NPT on the bottom, or 12S with (2) 1/2" NPT on each side. Back Box ships separately.

**FEATURES:** Hydrel Exclusive "Flow-Thru" technology, featuring independently encapsulated LED module and Driver module

**ENVIRONMENT:** Wet location.

**LISTING:** cCSAus, Suitable for outdoor & wet location. IP67 rated

**LED LIFE:** Reported L80 @>120,000 hours

**FINISH:** Exterior parts are protected by a zinc-infused durable TGIC thermoset powder coat finish that provides superior resistance to corrosion and weathering. A tightly controlled multi-stage process ensures a minimum 3 mils thickness for a finish that can withstand extreme climates without cracking or peeling

**GOVERNMENT PROCUREMENT:** BAA – Buy America(n) Act: Product qualifies as a domestic end product under the Buy American Act as implemented in the FAR and DFARS. Product also qualifies as manufactured in the United States under DOT Buy America regulations. BABA – Build America Buy America: Product qualifies as produced in the United States under the definitions of the Build America, Buy America Act. Please refer to [www.acuitybrands.com/resources/buy-american](http://www.acuitybrands.com/resources/buy-american) for additional information.

**WARRANTY:** 5-year limited warranty. This is the only warranty provided and no other statements in this specification sheet create any warranty of any kind. All other express and implied warranties are disclaimed. Complete warranty terms located at:

[www.acuitybrands.com/support/warranty/terms-and-conditions](http://www.acuitybrands.com/support/warranty/terms-and-conditions)

Consult factory for details

**NOTE:** Actual performance may differ as a result of end-user environment and application. All values are design or typical values, measured under laboratory conditions at 25 °C. Specifications subject to change without notice.

### Specifications

Model:	Weight:
WANDER1 SRM	3.90 lbs.
WANDER1 Back Box	1.60 lbs.
WANDER3 SRM	5.80 lbs.
WANDER3 Back Box	2.5 lbs.