



express yourself through light



# Fresco™ Touchscreen

## Firmware Update Process

## Overview

Fresco Touchscreen updates are performed using Fresco Studio Software ([Download Link](#))

## Connectivity

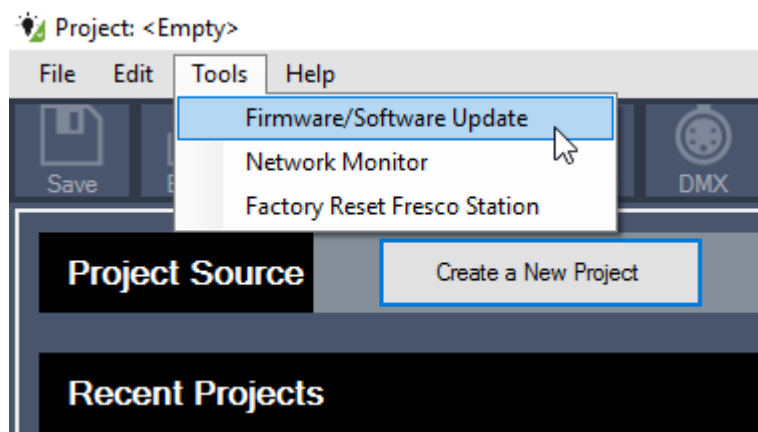
Connect to the Touchscreen either with micro-USB or using the CAT-5 network port. The USB port is located on the bottom side of the station, which is accessible by loosening the set screws with the 1/16" hex key. Keep in mind if using the CAT-5 port, you will need to configure your computer's static IP address.

**You must be connected to the internet to download the updates.**

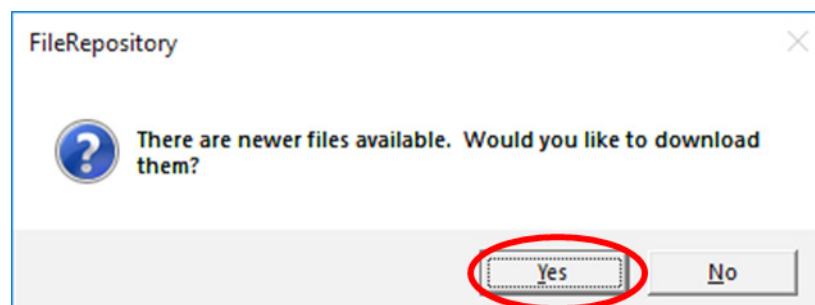
The updates will be cached on your computer after they are downloaded.

## Steps

1. Open Fresco Studio on a PC.
2. Ensure Fresco Studio is up to date. The software can be updated over the internet by selecting TOOLS>FIRMWARE/SOFTWARE UPDATE while using the program.



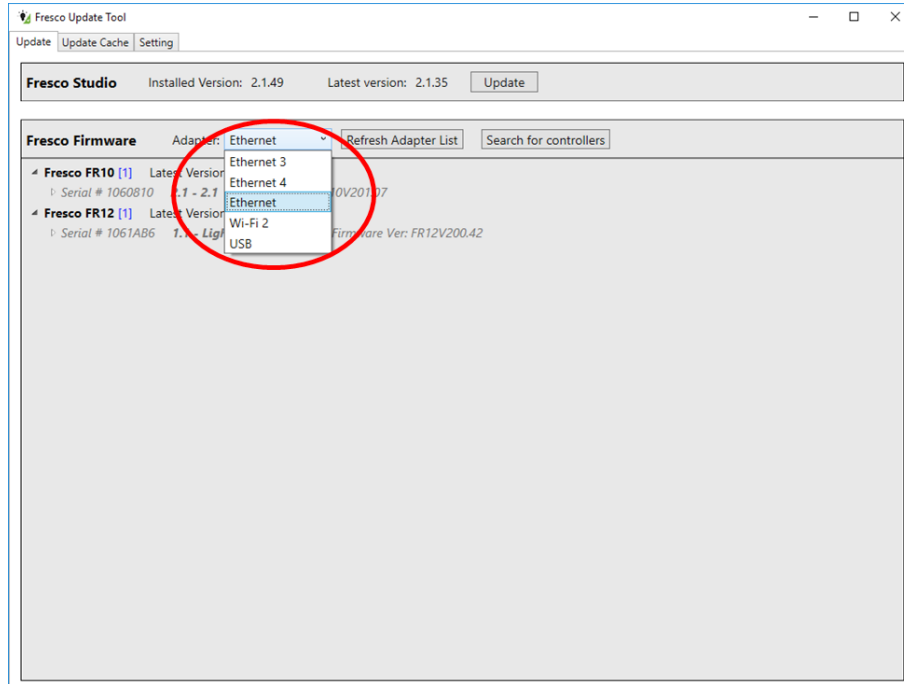
3. Select TOOLS>FIRMWARE/SOFTWARE UPDATE from the Menu Bar.
4. If a new version of firmware or software is available, you will see a prompt to download the files.



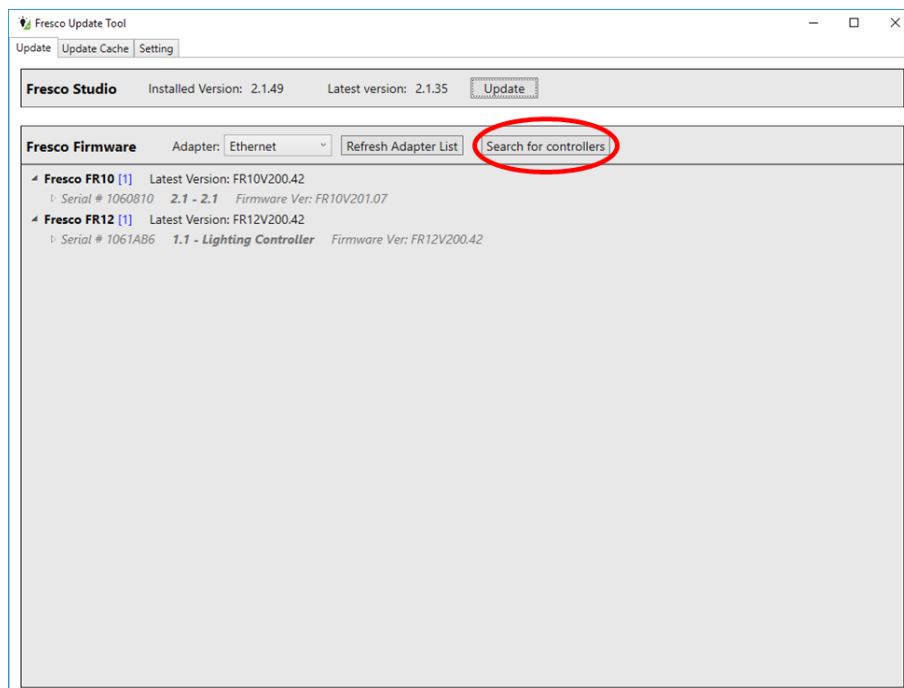
# Fresco Touchscreen Firmware Update Process

## Steps (cont'd)

5. Using the dropdown menu, select USB or the network adaptor that the Fresco Touchscreen(s) are connected to.

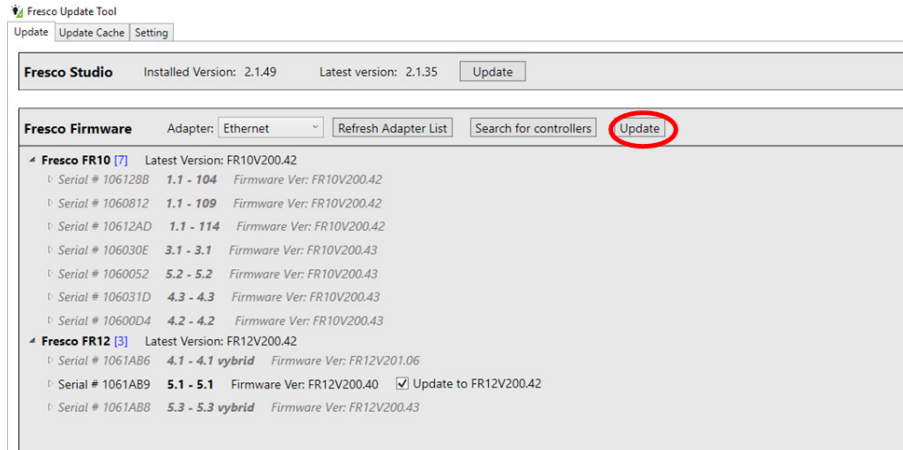


6. If the Fresco Touchscreen is connected to a network adaptor (i.e. Ethernet), click "Search for Controllers" to locate all connected Fresco Touchscreens and any additional touchscreens connected via FCN 485 to an Ethernet Touchscreen.

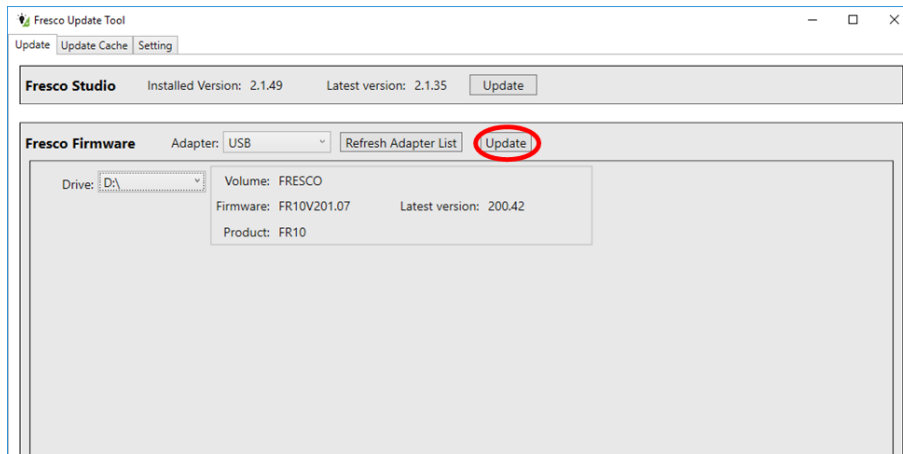


## Steps (cont'd)

7. Select one or more Fresco Touchscreens from the list to update, then click "Update." Each Touchscreen will then be updated to the most recent version.



Firmware Update via Ethernet



Firmware Update via USB

### NOTE

It is critical that you do NOT remove power from the station during the update process. The update process could take up to 2 minutes. Depending on which previous version of firmware was on the station, the display may go dark, or you may see a blue screen either of which is normal.

# Fresco Touchscreen Firmware Update Process

## Steps (cont'd)

8. The local cache can be viewed on the second tab.

