

Catalog Number
Notes
Type

## FEATURES & SPECIFICATIONS

### INTENDED USE

This fresh and innovative track head combines aesthetics with superior functionality for applications such as specialty retail, hospitality, residential multi-family and educational environments.

### CONSTRUCTION

Lamp holder: Clear cylinder glass with brushed nickel fittings sheds light in desired areas. Kit includes (1) 44" white track (120V), (1) floating feed, and (3) LTHCYLD adjustable track heads.

Available in brushed nickel finish.

### ELECTRICAL

MR16 style uses a GU10 base 120V porcelain socket.

120 VAC 60Hz

### LISTINGS

cETL<sub>us</sub> Listed to UL1574 Track Lighting Standard.

Dry location.

### WARRANTY

1-year limited warranty. Complete warranty terms located at:

[www.acuitybrands.com/CustomerResources/Terms\\_and\\_conditions.aspx](http://www.acuitybrands.com/CustomerResources/Terms_and_conditions.aspx).

**Note:** Actual performance may differ as a result of end-user environment and application.

Specifications subject to change without notice.

### Decorative Track Lighting

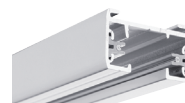
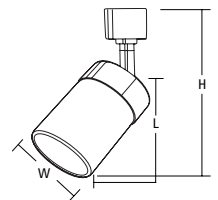
# LTKNCYLD SERIES

Line Voltage Track Kit  
MR16 GU10 Lamp



Specifications			
Lamp designation	Width	Length	Maximum height
MR16	3-1/4	4-3/4	7

All dimensions are inches (centimeters) unless otherwise indicated.



**44" white track (120V)**  
(included)



**LTNFC - floating feed**  
(included)



**LTHNCYLD (qty 3) - adjustable track heads**  
(included)

### ORDERING INFORMATION

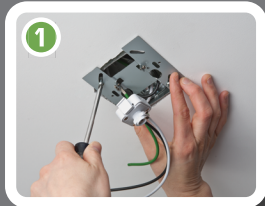
All configurations of this product are considered "standard" and have short lead times.

**Example:** LTKNCYLD MR16GU10 BN

LTKNCYLD	MR16GU10		
Series	Lamp/Max Wattage		Finish
<b>LTKNCYLD</b> Clear cylinder glass track kit	<b>MR16GU10</b>	MR16, GU10 lamp base/50W Halogen 7W LED	<b>BN</b> Brushed nickel

## INSTALLATION INSTRUCTIONS

### Easy to Install in 4 Steps



Install mounting plate to ceiling.



Connect track to mounting plate and wire.



Attach track to ceiling.



Simply twist heads onto track.