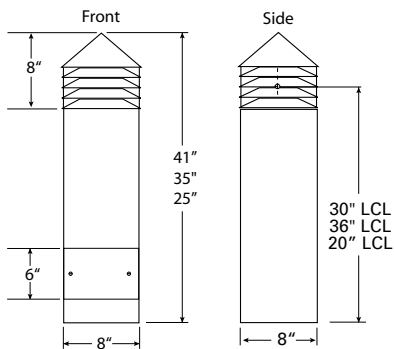




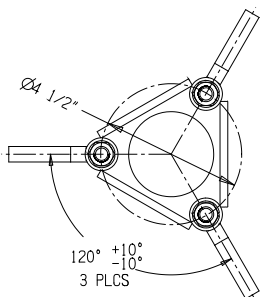
Specifications

Diameter:	9"
	229 mm
Diameter ² :	8"
	204 mm
Height:	42"
	1016 mm
Height ² :	36"
	915 mm
Weight:	35lbs

DIMENSIONS



MOUNTING



3150C LED

Impact Resistant Square Bollard Pyramid Top

HIGHLIGHTS

- A confident solution for safety and performance in a proven vandal resistant bollard
- USB receptacle or GFCI receptacle options
- 0-10V Dimming, ELV dimming
- Emergency operation up to 90 minutes
- 1810 lumens

5
YEAR
warranty



IP65



LUMEN PACKAGES

	SYM
Delivered Lumens	1810
Watts	84
LPW	22

Note: Information Based on 50K

ORDERING INFORMATION

EXAMPLE: 3150C H36 8COB 50K MVOLT SYM BL

Series		Height	Lamp type	Color		Voltage		Distribution		Options	
3150C	H24	4COB ¹	20K	2000°K Color Temp		MVOLT (120-277 volt)		SYM	Symmetrical 360°	GFCI ELN ^{3,5} LDIM IDIM ⁴ USB	Receptacle; 120 volt only, cannot be used with USB Emergency Operation (1387.5 lumen output; 90 minutes) 0-10V Dimming (Dims to 10%) In-line Trailing Edge ELV Dimming (Dims to 40%); 120 volt only USB charging port, 120 volt only, cannot be used with GFCI
	H36	8COB	30K	3000°K Color Temp		120 ²					
	H42		40K	4000°K Color Temp		277 ²		FT	Forward Throw		
			50K	5000°K Color Temp		347					
			AMBLW	Limited wavelength Amber 591 Nanometers							
Finish											
BL	Black	STG	Steel Gray						Optional Louvers Painted ⁷ ___/PL Louvers painted to match fixture (top only)		
BZ	Bronze	TVG	Terra Verde Green								
DDB	Dark Bronze	WH	White								
DNA	Natural Aluminum	CF	Custom								
GN	Green	__Z ⁶	Zinc Undercoat								
GR	Gray	RALTB	RAL Paint Finishes								
SND	Sand	Note: RALTB for pricing only, replace with applicable RAL call out when ready to order. See the RALBROCHURE for available options. It is recommended that Hydrel products only use textured paint.									

Notes:

- 1 4COB for use with 20K and AMBLW only, 20K and AMBLW require 4COB.
- 2 Required with ELN.
- 3 ELN and BLS require 120 or 277 voltage, not MVOLT or 347.
- 4 Drive current will be 250.
- 5 ELN not available on 24" height.
- 6 Add zinc undercoat for harsh environments.
- 7 Louvers will be black unless otherwise specified (top only).

ELECTRICAL LOAD

Light Engines	Drive Current (mA)	System Watts	Current (A)					
			120	208	240	277	347	480
8 COB	250mA	72.35	0.603	0.348	0.301	0.261	0.209	0.151
	300mA	83.95	0.700	0.404	0.350	0.303	0.242	0.175

PROJECTED LED LUMEN MAINTENANCE

Data references the extrapolated performance projections for the Fixture platform in a 25°C ambient, based on 13,000 hours of LED testing (tested per IESNA LM-80-08 and projected per IESNA TM-21-11).

To calculate LLF, use the lumen maintenance factor that corresponds to the desired number of operating hours below. For other lumen maintenance values, contact factory.

Operating Hours	0	25,000	50,000	100,000
Lumen Maintenance Factor	1.00	0.91	0.85	0.75

LUMEN AMBIENT TEMPERATURE (LAT) MULTIPLIERS

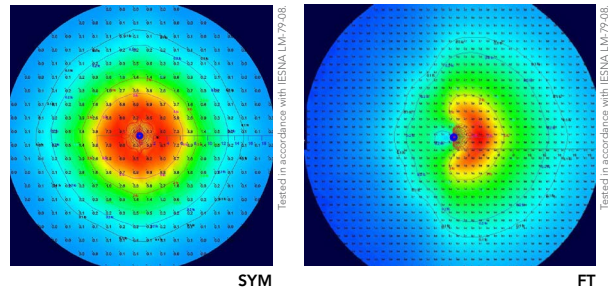
Use these factors to determine relative lumen output for average ambient temperatures from 0-40°C (32-104°F).

Ambient	Lumen Multiplier
0°C	1.05
10°C	1.03
20°C	1.01
25°C	1.00
30°C	0.99
40°C	0.98

Lighting facts®	
A Program of the U.S. DOE	
Light Output (Lumens)	1534
Watts	83.95
Lumens per Watt (Efficacy)	18
Color Accuracy	84
Color Rendering Index (CRI)	
Light Color	4028 (Bright White)
Correlated Color Temperature (CCT)	
Warm White	Bright White
2700K	3000K
4500K	6500K
All results are according to IESNA LM-79-2008: Approved Method for the Electrical and Photometric Testing of Solid-State Lighting. The U.S. Department of Energy (DOE) verifies product test data and results.	
Visit www.lightingfacts.com for the Label Reference Guide.	
Registration Number: DHMB-SWXX001 (7/23/2014)	
Model Number: 3100 8COB 40K SYM	
Type: Luminaire - Bolland	

PERFORMANCE DATA

Iscandela plots for 3100 COB. To see complete photometric reports or download .ies files for this product, visit www.hydrel.com/



LUMEN OUTPUT

Lumen values are from photometric tests performed in accordance with IESNA LM-79-08. Data is considered to be representative of the configurations shown, within the tolerances allowed by Lighting Facts. Actual performance may differ as a result of end-user environment and application. Contact Factory for performance data on any configuration not shown here.

Light Engines	Distribution	Drive Current	System Watt	Lumens	LPW	B	U	G
3000K	SYM	250*	72	1300	18	1	2	1
		300	84	1525	18	1	2	1
4000K	SYM	250*	72	1320	18	1	2	1
		300	84	1535	18	1	2	1
5000K	SYM	250*	72	1535	21	1	2	1
		300	84	1810	22	2	2	1
2000K	SYM	1050	72	900	13	1	2	1

*Used with IDIM.

LED LIFE: L80/64,000 hours

OPERATING TEMPERATURE: -20°C Through 50°C

SPECIFICATIONS AND FEATURES

MATERIAL: Copper-free aluminum, A360.

LED ARRAY: 72W and 84W (total system input wattage) Lumen maintenance of individual light sources have been independently tested to IESNA LM-80 standards. All within 3 MacAdam ellipses.

VOLTAGE: MVOLT 50/60Hz, 120, 277 or 347

DISTRIBUTION: SYM - Symmetric, FT - Forward Throw

LENS: Frosted borosilicate glass.

POWER SUPPLY: Integrally mounted LED driver run at 300mA, -20°C through 50°C standard.

FINISH: Super durable polyester TGIC powder coat finish (standard). Optional zinc undercoat for harsh environments.

FASTENERS: Stainless Steel.

LISTING: cCSAus, suitable for wet locations, laboratory tests conducted by CSA to UL Standard UL-1598 and UL-8750.

GOVERNMENT PROCUREMENT

BAA – Buy America(n) Act: Product qualifies as a domestic end product under the Buy American Act as implemented in the FAR and DFARS. Product also qualifies as manufactured in the United States under DOT Buy America regulations.

BABA – Build America Buy America: Product qualifies as produced in the United States under the definitions of the Build America, Buy America Act.

Please refer to www.acuitybrands.com/resources/buy-american for additional information.

WARRANTY: 5-year limited warranty. This is the only warranty provided and no other statements in this specification sheet create any warranty of any kind. All other express and implied warranties are disclaimed. Complete warranty terms located at:

www.acuitybrands.com/support/warranty/terms-and-conditions

Consult factory for details.

NOTE: Actual performance may differ as a result of end-user environment and application. All values are design or typical values, measured under laboratory conditions at 25 °C. Specifications subject to change without notice.