



Archer LED

Patient Room Wall Light



Project:

Type:

Qty:

SPECIFICATIONS

Interior

ARCHER LED

SPECIFICATIONS

The Archer bed light provides versatility with optional sequential switching for patient room ambient and task lighting. The sleek housing profile echoes the Chrysalite and can be used together to create a complementary look in a lighting design. Multiple lamping and switching options allow this fixture to be used in a wide array of applications. As a bed light, placement above the patient on the headwall delivers optimal distribution of light for reading and also comfortable ambient illumination. If a low voltage controller is included (optional), light levels can be adjusted via the nurse call system or using a separate pendant pillow switch (optional). This fixture is also a good choice for guest lighting.

- Delivers multiple light levels for patient: indirect, direct, both
- Separate mounting plate makes installation easy; mount rigid but lightweight plate to wall and then install fixture
- Low voltage controller (option) allows patient control from nurse call system or separate pillow switch (option)
- Single-piece extruded aluminum body for extreme durability
- Entirely serviceable without removal from wall

Construction

Extruded aluminum housing
Die-cast aluminum handles
High impact acrylic lenses; UV treated to prevent yellowing with age
Polyester powder coat finish; anti-microbial powder coat finish available
Wall mount brackets included. Packaged separately.

Source

Nichia LED chips (or equivalent) mounted on linear boards

Driver

eldoLED ECOdrive, Dim to 1% light output

Weight

HPW336 – approximate shipping weight 20 lbs.
HPW348 – approximate shipping weight 30 lbs.

Voltage

120V MVOLT

Switching

Line voltage switching (by others)
Low voltage controller (optional) for patient control of up and down light sequentially from nurse call system or pillow switch (optional)
2-position pull chain for on/off control or 4-position pull chain for sequential control of up and down light (optional, 120V only)

Input Watts (As Tested)

Top and bottom mode 2U2D configuration, 4ft fixture – 102 WATTS
Top mode 2U2D configuration, 4ft fixture - 51 WATTS

Light Output (As Tested)

Top and bottom mode 2U2D configuration, 4ft fixture - 10860 lumens
Top mode 2U2D configuration, 4ft fixture - 5490 lumens

Dimming

0-10V dimming standard

Color Quality

>80 CRI

Life Estimate

50,000 hours*

*LED life projection based on IES TM-21 and IES LM-80

Listings

CSA certified to meet US and Canadian standards. Damp location listed.

Government Procurement

BAA – Buy America(n) Act: Product qualifies as a domestic end product under the Buy American Act as implemented in the FAR and DFARS. Product also qualifies as manufactured in the United States under DOT Buy America regulations.
BABA – Build America Buy America: Product qualifies as produced in the United States under the definitions of the Build America, Buy America Act. Please refer to www.acuitybrands.com/resources/buy-american for additional information.

Warranty

5-year limited warranty. Complete warranty terms located at: www.acuitybrands.com/support/warranty/terms-and-conditions

Note: Actual performance may differ as a result of end-user environment and application. All values are design or typical values, measured under laboratory conditions at 25 °C.

CATALOG NUMBER

Example: HPW348 120 LED35 2U2D LV LCR AM

Series		Voltage		Lamping Type		Lamping				
HPW336	Archer 3ft in Length	120 ⁵	120V	LED27	2700K LED	2U1D	2 Rows LEDs Up, 1 Row LEDs Down	0U1DMT	Only 1 Row LEDs Down with Top Plate	
HPW348	Archer 4ft in Length	MVOLT	120-277 Volt	LED30	3000K LED	2U2D	2 Rows LEDs Up, 2 Rows LEDs Down	0U2DMT	2 Rows LEDs Down with Top Plate	
				LED35	3500K LED	1U1D	1 Row LEDs Up, 1 Row LEDs Down	1U0DMB	Only 1 Row LEDs Up with Bottom Plate	
				LED40	4000K LED	1U2D	1 Row LEDs Up, 2 Rows LEDs Down	2U0DMB	2 Rows LEDs Up with Bottom plate	
Switching Config							Option		Finish	
LV	Low Voltage Controller - Sequential Switching			S2LDL ^{1,2}	On/Off Pull Chain on Left (bottom only)		LCL ³	3W LED Chart Light with Switch on Left	FW	Flat White (standard)
LV1L ²	LVC with Pillow Switch for Down Light on Left			S2RDL ^{1,2}	On/Off Pull Chain on Right (bottom only)		LCR ³	3W LED Chart Light with Switch on Right	AM	Anti-Microbial White
LV1R ²	LVC with Pillow Switch for Down Light on Right			S2CDL ¹	On/Off Pull Chain on Center (bottom only)		LCLHW ³	3W LED Chart Light "Hard Wired" Left		
LV2L ²	LVC with Pillow Switch on Left - Sequencing Up + Down Light			S4L ^{1,2}	4-Position Pull Chain on Left		LCRHW ³	3W LED Chart Light "Hard Wired" Right		
LV2R ²	LVC with Pillow Switch on Right - Sequencing Up + Down Light			S4R ^{1,2}	4-Position Pull Chain on Right		BD ¹	Bed-Stop Switch	CC ⁴	Custom Color
S2L ^{1,2}	On/Off Pull Chain on Left (top & bottom)			S4C ¹	4-Position Pull Chain on Center					
S2R ^{1,2}	On/Off Pull Chain on Right (top & bottom)			SX	No Switch					
S2C ¹	On/Off Pull Chain on Center (top & bottom)									
Please refer to the Low Voltage Controller Spec Sheet for details and wiring diagrams										

Notes are on following page.

Archer LED

Patient Room Wall Light

Project:

Type:

Qty:

SPECIFICATIONS

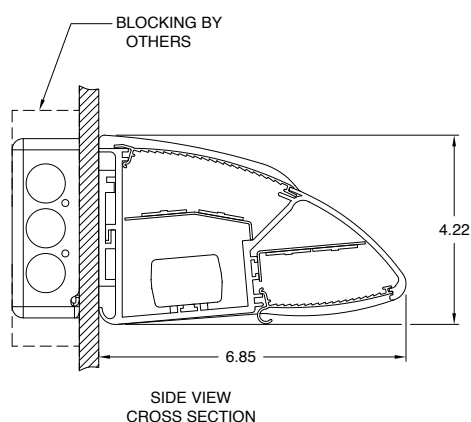
Interior

ARCHER LED

Notes

- 1 BD, S2, and S4 options are compatible with 120v only
- 2 For pull chain and pillow switch, specify "left" or "right" as viewed facing the head wall
- 3 3W LED chart light (option) always installed opposite end from pull chain or pillow switch
- 4 Custom color requires factory pricing
- 5 Must use with BD, S2, or S4 options

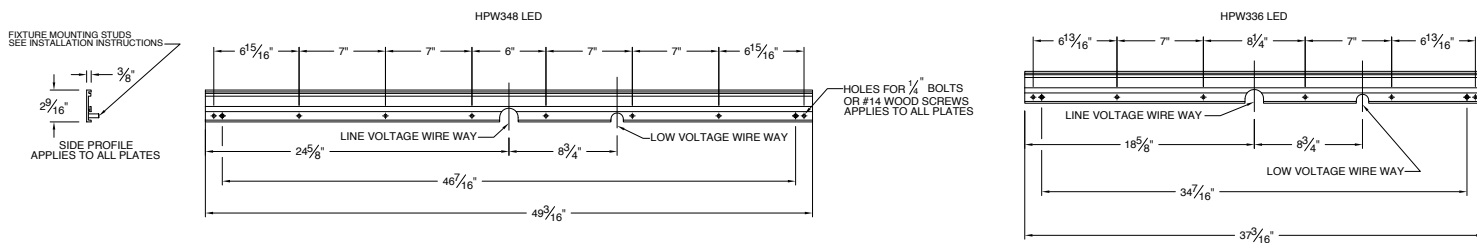
DIMENSIONS



Fixture	NOMINAL LENGTH	ACTUAL LENGTH
HPW348 LED	48"	49.56"
HPW336 LED	36"	37.56"

MOUNTING INFORMATION

- Installation is made easy by the incorporation of a separate mounting plate (blocking by others).
- After the plate is mounted to the wall the fixture can be quickly connected and hung.
- It is the responsibility of the party installing the fixture to select appropriate fasteners that are suitable for the wall material and construction.
- It is the responsibility of the person installing the light fixture to ensure that the materials, hardware and building structural members that are selected will support the light fixture(s) and that they meet all applicable building and safety codes.
- Complete electrical connections according to the wiring diagram on ballast tray, following all applicable building codes and regulations.



Archer LED

Patient Room Wall Light

Project:

Type:

Qty:

SPECIFICATIONS

Interior

ARCHER LED

PERFORMANCE DATA

Lumen Output

Lumen values are from photometric tests from an accredited laboratory. Data is considered to be representative of the configurations shown, within generally accepted industry tolerances. Actual performance may differ as a result of end-user environment and application.

For 3-foot Fixture				
Lamping		Lumen Output	Input Watts	Lumens/Watt
2U1D	2 Rows LEDs Up, 1 Row LEDs Down	6132	60	102
2U2D	2 Rows LEDs Up, 2 Rows LEDs Down	8145	78	104
1U1D	1 Row LEDs Up, 1 Row LEDs Down	4073	37	110
1U2D	1 Row LEDs Up, 2 Rows LEDs Down	6087	60	101
0U1DMT	Zero Up, Only 1 Row LEDs Down with Top Plate	2014	19	106
0U2DMT	Zero Up, 2 Rows LEDs Down with Top Plate	4028	39	103
1U0DMB	1 Row LEDs Up with Bottom Plate, Zero Down	2059	19	108
2U0DMB	2 Rows LEDs Up with Bottom Plate, Zero Down	4118	39	106

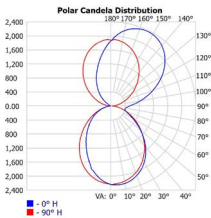
*Performance Data based upon 2U2D / 40K / 80CRI

For 4-foot Fixture				
Lamping		Lumen Output	Input Watts	Lumens/Watt
2U1D	2 Rows LEDs Up, 1 Row LEDs Down	8175	76	108
2U2D	2 Rows LEDs Up, 2 Rows LEDs Down	10860	102	106
1U1D	1 Row LEDs Up, 1 Row LEDs Down	5430	50	109
1U2D	1 Row LEDs Up, 2 Rows LEDs Down	8115	76	107
0U1DMT	Zero Up, Only 1 Row LEDs Down with Top Plate	2685	25	107
0U2DMT	Zero Up, 2 Rows LEDs Down with Top Plate	5370	51	105
1U0DMB	1 Row LEDs Up with Bottom Plate, Zero Down	2745	25	110
2U0DMB	2 Rows LEDs Up with Bottom Plate, Zero Down	5490	51	108

*Performance Data based upon 2U2D / 40K / 80CRI

PHOTOMETRICS

DIRECT & INDIRECT (All On)
Test Report: LTL28137MC1
HPW348 120 LED40 2U2D S4L
Lumens: 10856
Input Wattage: 101.56
Max. Candela: 2367 H: 0°, V: 155°



Illuminance at a Distance

Height	Center Beam Footcandle
4.0	140.2
8.0	35.1
12.0	15.6
16.0	8.8
20.0	5.6

Photometric data based on test results from an independent NIST traceable testing lab. IES data is available at www.healthcare-lighting.com. Always refer to our website for the latest IES file updates.

Lumen Multiplier Table

Data table baseline is 35K 80CRI photometry. This table can be used to approximate the lumen values at different kelvin temperatures. Power consumption would stay the same.

CCT	CRI	Multiplier
27K	80CRI	0.96
30K	80CRI	0.99
35K	80CRI	1.00
40K	80CRI	1.00

Archer LED

Patient Room Wall Light

Project:

Type:

Qty:

SPECIFICATIONS

Interior

ARCHER LED

OPTION DETAILS

Chart Light Position

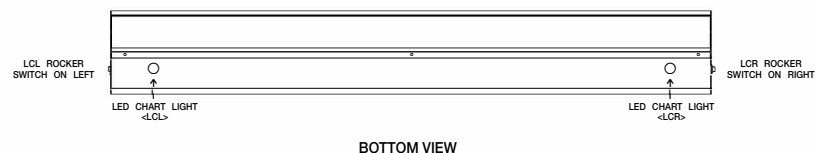
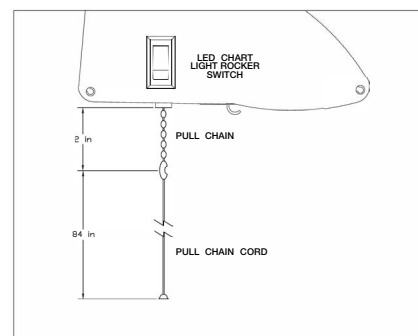
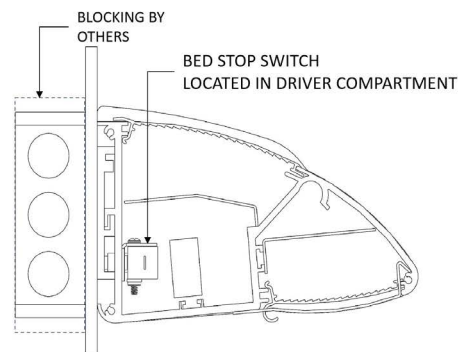


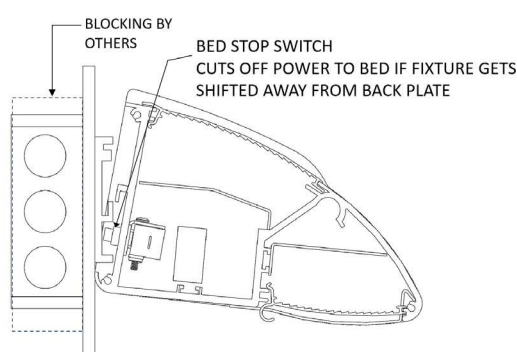
Chart Light Rocker Switch Location and S2 or S4 Pull Chain



Bed Stop Operation



SIDE VIEW
CROSS SECTION
BED STOP SWITCH ENGAGED



SIDE VIEW
CROSS SECTION
BED STOP SWITCH DISENGAGED