



Specifications

Weight: 10 lbs

H: 9.07" (230mm) w/C1
11.07" (281mm) w/C2
14.88" (378mm) w/C3

PINE MVOLT LED

HIGHLIGHTS

- The Pine Series accent light is suitable for a variety of mounting applications including ground, wall, tree, sign and architectural accents
- Suitable for wet locations
- TRIAC (forward-phase or leading-edge) and ELV (reverse phase or trailing-edge)
- Available in 80CRI and 90CRI
- 4,200lm

5
YEAR
warranty

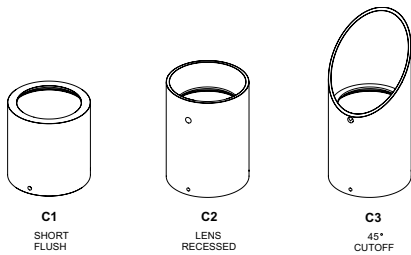
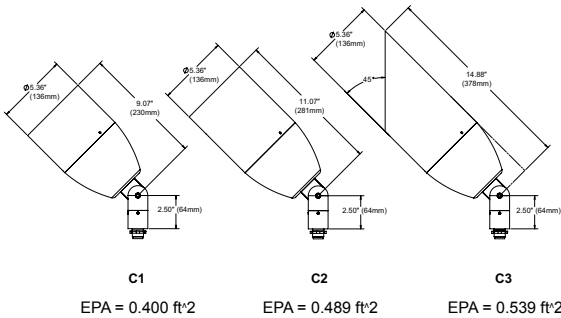
66
IP RATED

WET
LOCATION™

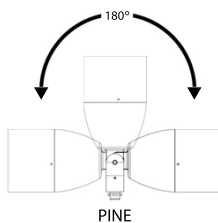
BAA

BABA

DIMENSIONS



AIMING DETAILS

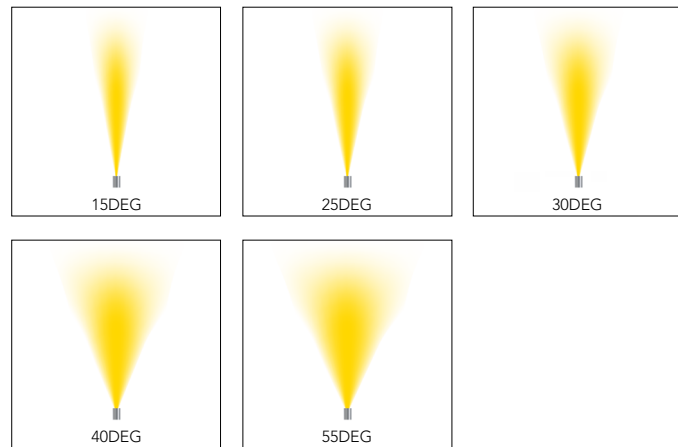


PERFORMANCE SUMMARY

| | 15DEG | 20DEG | 25DEG | 30DEG | 35DEG | 40DEG | 45DEG | 50DEG | 55DEG |
|------------------|--------|--------|--------|--------|-------|-------|-------|-------|-------|
| Delivered Lumens | 4,229 | 4,006 | 4,072 | 4,003 | 4,174 | 4,155 | 4,024 | 4,012 | 4,015 |
| Watts | 53 | 53 | 53 | 53 | 53 | 53 | 53 | 53 | 53 |
| LPW | 80 | 76 | 77 | 76 | 79 | 78 | 76 | 76 | 76 |
| Peak Candela | 40,164 | 17,667 | 18,153 | 11,092 | 9,714 | 7,865 | 6,172 | 4,808 | 4,181 |

Note: Information based on 5000K @ P1 120 Volt with C1 cap and FLC lens.

STANDARD DISTRIBUTION



ORDERING INFORMATION

EXAMPLE: PINE P1 90CRI 27K MVOLT 15DEG WSL KM JBA IHL C2 BL

| PINE | | | | | | | | | | | |
|--|-----------------------|-------|--------------------------|----------------------|------------------|----------------|---------------------|--|--|--|--|
| Series* | Performance Packages* | CRI* | LED Color* | Voltage* | Distribution* | Lens* | Mounting* | Mounting Accessories <i>Optional</i> | | | |
| PINE | P1 | 80CRI | 27K | MVOLT 120-277VAC | 15DEG 15° | FLC Flat Clear | KM Knuckle Mount | Independent Mounting | | | |
| | P2 | 90CRI | 30K | | 20DEG 20° | WSL Watershed | | JBA Aluminum J-Box | | | |
| | | | 35K | | 25DEG 25° | | | ARJB J-Box, Aluminum | | | |
| | | | 40K | | 30DEG 30° | | | WMSA Wall Mount with Splice Access | | | |
| | | | 50K¹ | | 35DEG 35° | | | PM60C Post Mount with Conduit | | | |
| | | | 40DEG 40° | | 45DEG 45° | | | Note: Aluminum or Bronze Stake Mounted J-Box (SBA_ or SBB_) is available in 12" or 18" and can be ordered separately, please see below and spec sheet for options. | | | |
| | | | 50DEG 50° | | | | | | | | |
| | | | 55DEG 55° | | | | | | | | |
| | | | | | | | | | | | |
| Options ^{Optional} | | | | | External Caps* | | Finish* | | | | |
| Internal Louver | | | Internal Filters³ | | C1 Short Flush | | All Material | | | | |
| IHL | Honeycomb Louver | | FA | Amber | C2 Recessed Lens | | BL | Black Textured | | | |
| Internal Accessory | | | FG | Green | C3 45° Angle Cut | | BRS | Bronze Smooth | | | |
| L1 | Prismatic Lens | | FGD | Green Dichroic | | | BRT | Bronze Textured | | | |
| L2 | Linear Spread Lens | | FLB | Light Blue | | | DBL | Designer Black Smooth | | | |
| L3 | Softening Lens | | FM | Mercury Vapor | | | DDB | Designer Bronze Smooth | | | |
| | | | FMB | Medium Blue | | | DNA | Natural Aluminum Smooth | | | |
| | | | FMBD | Medium Blue Dichroic | | | NBS⁴ | Natural Bronze Smooth | | | |
| | | | FR | Red | | | STG | Steel Gray | | | |
| | | | FRD | Red Dichroic | | | VET | Verde Textured | | | |
| | | | | | | | WH | White Textured | | | |
| | | | | | | | WHS | White Smooth | | | |
| | | | | | | | CF | Custom Finish | | | |
| | | | | | | | __Z⁵ | Zinc Undercoat for harsh environment (Example BLZ) | | | |
| | | | | | | | RALTBD⁶ | RAL Paint Finishes | | | |
| Note: Additional standard finish options available. See page # 4 | | | | | | | | | | | |

*Required Fields

Notes:

1. 80CRI Only.
2. Up to 2 options can be specified.
3. Only available with P1.
4. NBS paint uses specialty pigments to give a natural appearance that may vary by fixture.
5. Zinc Undercoat provides corrosion protection for Marine Environment and Natatorium Construction
6. RALTBD for pricing only, replace with applicable RAL call out when ready to order. See the [RALBROCHURE](#) for available options. It is recommended that Hydrel products only use textured paint.

PERFORMANCE DATA

LUMEN OUTPUT

Lumen values are from photometric tests performed in accordance with IESNA LM-79-08. Data is considered to be representative of the configurations shown, within the tolerances allowed by Lighting Facts. Actual performance may differ as a result of end-user environment and application. Contact factory for performance data on any configurations not shown here.

| Performance Package | System Watts | Distribution Type | Field Angle | | Beam Angle | | 27K (2700K, 80CRI) | | | 30K (3000K, 80CRI) | | | 35K (3500K, 80CRI) | | | 40K (4000K, 80CRI) | | | 50K (5000K, 80CRI) | | |
|---------------------|--------------|-------------------|-------------|----|------------|----|--------------------|--------|-----|--------------------|--------|-----|--------------------|--------|-----|--------------------|--------|-----|--------------------|--------|-----|
| | | | °H | °V | °H | °V | Max CD | Lumens | LPW | Max CD | Lumens | LPW | Max CD | Lumens | LPW | Max CD | Lumens | LPW | Max CD | Lumens | LPW |
| P1 | 33 | 15DEG | 29 | 29 | 15 | 15 | 28,641 | 3,016 | 91 | 29,711 | 3,129 | 95 | 30,247 | 3,185 | 97 | 31,317 | 3,298 | 100 | 32,388 | 3,410 | 103 |
| | | 20DEG | 44 | 44 | 21 | 21 | 12,598 | 2,857 | 87 | 13,069 | 2,964 | 90 | 13,305 | 3,017 | 91 | 13,776 | 3,124 | 95 | 14,247 | 3,231 | 98 |
| | | 25DEG | 43 | 43 | 23 | 23 | 12,945 | 2,904 | 88 | 13,429 | 3,012 | 91 | 13,671 | 3,067 | 93 | 14,155 | 3,175 | 96 | 14,639 | 3,284 | 100 |
| | | 30DEG | 55 | 55 | 30 | 30 | 7,910 | 2,855 | 87 | 8,206 | 2,961 | 90 | 8,353 | 3,015 | 91 | 8,649 | 3,121 | 95 | 8,945 | 3,228 | 98 |
| | | 35DEG | 56 | 54 | 36 | 33 | 6,927 | 2,976 | 90 | 7,186 | 3,088 | 94 | 7,316 | 3,143 | 95 | 7,574 | 3,254 | 99 | 7,833 | 3,366 | 102 |
| | | 40DEG | 64 | 63 | 40 | 39 | 5,609 | 2,963 | 90 | 5,818 | 3,074 | 93 | 5,923 | 3,129 | 95 | 6,133 | 3,240 | 98 | 6,343 | 3,351 | 102 |
| | | 45DEG | 74 | 73 | 44 | 43 | 4,401 | 2,870 | 87 | 4,566 | 2,977 | 90 | 4,648 | 3,030 | 92 | 4,813 | 3,138 | 95 | 4,977 | 3,245 | 98 |
| | | 50DEG | 86 | 86 | 51 | 51 | 3,429 | 2,861 | 87 | 3,557 | 2,968 | 90 | 3,621 | 3,021 | 92 | 3,749 | 3,128 | 95 | 3,877 | 3,235 | 98 |
| P2 | 53 | 15DEG | 29 | 29 | 15 | 15 | 35,517 | 3,740 | 71 | 36,845 | 3,880 | 73 | 37,508 | 3,950 | 75 | 38,836 | 4,089 | 77 | 40,164 | 4,229 | 80 |
| | | 20DEG | 44 | 44 | 21 | 21 | 15,623 | 3,543 | 67 | 16,207 | 3,675 | 69 | 16,499 | 3,742 | 71 | 17,083 | 3,874 | 73 | 17,667 | 4,006 | 76 |
| | | 25DEG | 43 | 43 | 23 | 23 | 16,053 | 3,601 | 68 | 16,653 | 3,736 | 70 | 16,953 | 3,803 | 72 | 17,553 | 3,938 | 74 | 18,153 | 4,072 | 77 |
| | | 30DEG | 55 | 55 | 30 | 30 | 9,809 | 3,540 | 67 | 10,176 | 3,672 | 69 | 10,359 | 3,739 | 71 | 10,726 | 3,871 | 73 | 11,092 | 4,003 | 76 |
| | | 35DEG | 56 | 54 | 36 | 33 | 8,590 | 3,691 | 70 | 8,911 | 3,829 | 72 | 9,072 | 3,898 | 74 | 9,393 | 4,036 | 76 | 9,714 | 4,174 | 79 |
| | | 40DEG | 64 | 63 | 40 | 39 | 6,955 | 3,674 | 69 | 7,215 | 3,812 | 72 | 7,345 | 3,880 | 73 | 7,605 | 4,018 | 76 | 7,865 | 4,155 | 78 |
| | | 45DEG | 74 | 73 | 44 | 43 | 5,458 | 3,559 | 67 | 5,662 | 3,692 | 70 | 5,764 | 3,758 | 71 | 5,968 | 3,891 | 73 | 6,172 | 4,024 | 76 |
| | | 50DEG | 86 | 86 | 51 | 51 | 4,252 | 3,548 | 67 | 4,411 | 3,680 | 69 | 4,490 | 3,747 | 71 | 4,649 | 3,879 | 73 | 4,808 | 4,012 | 76 |
| | | 55DEG | 94 | 94 | 54 | 53 | 3,697 | 3,551 | 67 | 3,836 | 3,684 | 70 | 3,905 | 3,750 | 71 | 4,043 | 3,883 | 73 | 4,181 | 4,015 | 76 |

| CRI SCALING | Multiplier |
|-------------|------------|
| 90CRI | 0.83 |

| EXTERNAL CAP | Multiplier |
|--------------|------------|
| C2 | 0.70 |
| C3 | 0.965 |

LED LIFE: L70@> 60,000 hours

OPERATING TEMPERATURE: -20°C through 45°C (P1 Performance Package)
-20°C through 30°C (P2 Performance Package)

PHOTOMETRIC DIAGRAMS

To see complete photometric reports or download .ies files for this product, visit www.hydrel.com

FEATURES & SPECIFICATIONS

MATERIAL: Body cast from 356-T6 Aluminum, Cap knuckle machined from 6061-T6 Aluminum.

LIGHT SOURCE: Proprietary high output LEDs. Units have near constant light output when supplied with aaVAC to combat voltage drop. All within 3 MacAdam ellipses. Available with an LED light engine supporting a high color rendering of 90CRI. Also available in 80CRI.

VOLTAGE: MVOLT

DISTRIBUTION: 15DEG, 20DEG, 25DEG, 30DEG, 35DEG, 40DEG, 45DEG, 50DEG, 55DEG

LENS: FLC - Cut from heat strengthened borosilicate glass for superior clarity and strength. WSL - Molded heat strengthened borosilicate glass for superior clarity and strength, where the glass and the top of the door are flush to allow water to shed off the fixture.

MOUNTING: Knuckle is 1/2" NPSM, mounts to 7/8" thru hole. Supplied standard with 48" of 18AWG connection wire.

ELECTRICAL: Integral MVOLT LED driver. 120VAC Dimmable with standard Triac or ELV dimming system.

FINISH: Super durable polyester TGIC powder coat finish (standard). Optional Zinc undercoat for harsh environments.

FEATURES: Any combination of up to 2 lens accessories/color filter/shielding can be specified in any cap style and are held securely by a removable stainless steel clip ring.

LISTING: cCSAus, Wet location. Laboratory tests conducted by CSA to UL Standards UL-1598, UL-8750 and UL-1838. IP66 Rated

GOVERNMENT PROCUREMENT

BAA – Buy America(n) Act: Product qualifies as a domestic end product under the Buy American Act as implemented in the FAR and DFARS. Product also qualifies as manufactured in the United States under DOT Buy America regulations.

BABA – Build America Buy America: Product qualifies as produced in the United States under the definitions of the Build America, Buy America Act.

Please refer to www.acuitybrands.com/resources/buy-american for additional information.

WARRANTY: 5-year limited warranty. This is the only warranty provided and no other statements in this specification sheet create any warranty of any kind. All other express and implied warranties are disclaimed. Complete warranty terms located at:

www.acuitybrands.com/support/warranty/terms-and-conditions

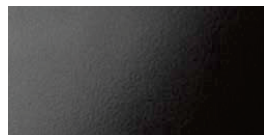
NOTE: Actual performance may differ as a result of end-user environment and application. All values are design or typical values, measured under laboratory conditions at 25 °C. Specifications subject to change without notice.

STANDARD ARCHITECTURAL COLORS

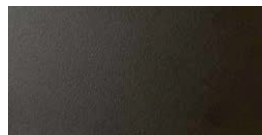
All Material Finishes



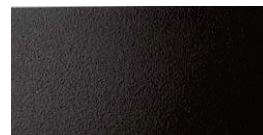
BL - Black Textured



BRS - Bronze Smooth



BRT - Bronze Textured



BZ - Brown Textured



DBL - Designer Black Smooth



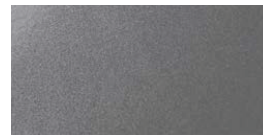
DBLB - Designer Black Textured



DDB - Designer Bronze Smooth



DDBT - Design Bronze Textured



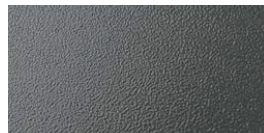
DNA - Natural Aluminum Smooth



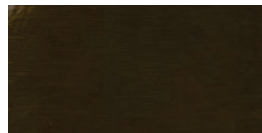
DWH - Designer White Smooth



GN - Green Textured



GR - Gray Hammer Tone



NBS - Natural Bronze Smooth



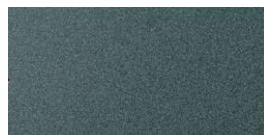
SND - Sand Textured



STG - Steel Gray Textured



TVG - Terra Verde Green



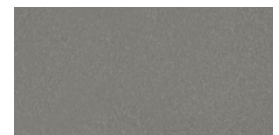
VET - Verde Textured



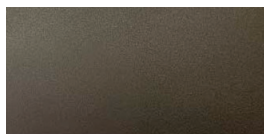
WH - White Textured



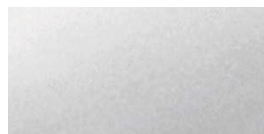
WHS - White Smooth



DNAT - Natural Aluminum Textured



LBPS - Light Bronze Paint Smooth



SGW - Semi Gloss White Smooth



SGB - Semi Gloss Black Smooth

Aluminum fixture surfaces undergo a six-step pretreatment process before being painted with a long-lasting TGIC polyester powder coat.

Custom finishes are available. Textures of custom finishes are dependent on the finish material specified. Please consult factory.

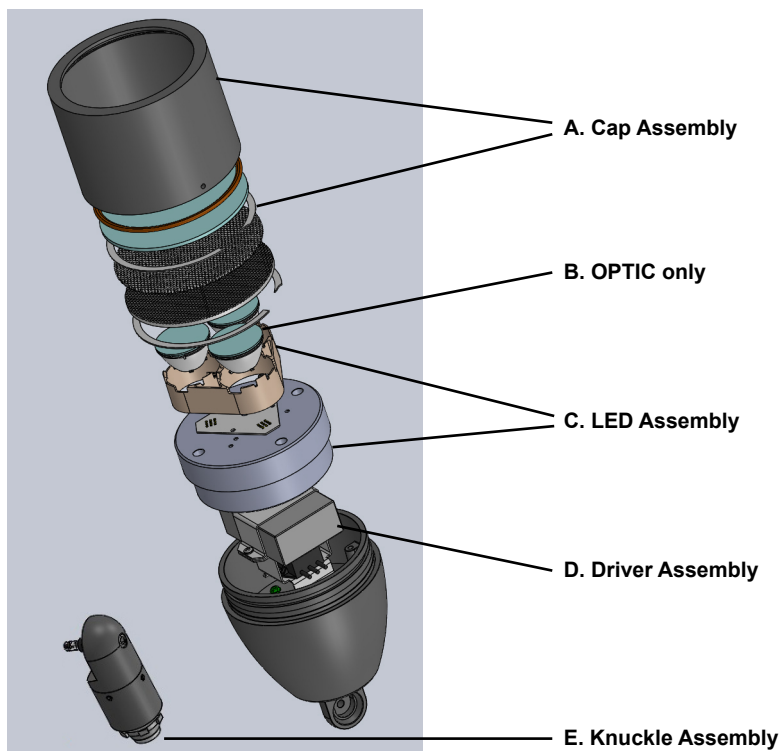
Note: These colors were scanned from color chip samples. Some colors, however, may vary slightly from actual appearance due to printing variations and limitations. Please contact factory for color chip samples.

RAL Paint Finishes are also available. See the [RALBROCHURE](#) for options. It is recommended that Hydrel products only use textured paint.

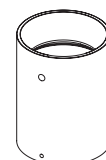
ACCENT MOUNTING ACCESSORIES

| | | Part # |
|---|---|---|
|  | <ul style="list-style-type: none"> JBA/JBB Junction box for direct fixture mounting Available in cast bronze or aluminum Used where splicing is required for single or multiple fixtures Drilled and tapped to specified requirements May be Ground or wall mounted | Examples: JBA 34E 34F 78G BL JBB 12A 12C 78G See spec sheet for more options |
|  | <ul style="list-style-type: none"> ARJB Architectural Junction Box Available in cast aluminum For direct mounting of a single lighting fixture Designed for architectural and landscape application Recommended for mounting on a rigid metallic conduit | Example: ARJB 12B 78C BL See spec sheet for more options |
|  | <ul style="list-style-type: none"> WMSA wall mount splice access Available in cast aluminum Wall mount with splice access plate for mounting a variety of fixtures Integral splice access compartment for easy fixture connections To be mounted over a recessed wall box | Example: WMSA 78C BL See spec sheet for more options |
|  | <ul style="list-style-type: none"> Post Mounts PM60C Ground Mounting posts Available in aluminum or brass Suitable for fixtures with 1/2" knuckles Fixtures are secured with a locking nut Can be used with low or line voltage fixtures Optional stems are offered in lengths from 3" to 36" | Examples: PM60C S3 BL See spec sheet for more options |
|  | <ul style="list-style-type: none"> SBA or SBB Stake mounted J-box Available in aluminum or bronze material Available in 12" and 18" Used for a portable convenient placement of accent fixtures to accommodate 12v or 120v 1/2" knuckle fixture | Examples: SBA12 78C CSL6P BL SBB18 78C CSL15P BZ See spec sheet for more options |

PINE SPARE PARTS LIST



C1 Short Flush



C2 Recessed Lens



C3 45° Angle

Part Number

A. CAP ASSEMBLY

CAPAPINE C1 xxx1 xxx2
CAPAPINE C2 xxx1 xxx2
CAPAPINE C3 xxx1 xxx2

1. available lens: FLC, WSL
2. add paint finish

B. Optic only

OPTPINE xx1

1. available distributions: 15DEG, 20DEG, 25DEG, 30DEG, 35DEG, 40DEG, 45DEG, 50DEG, 55DEG

C. LED Assembly

LEDAPINE xx1 xxx2 xxx3

1. available CRI: 80CRI, 90CRI
2. available colors: 27K, 30K, 35K, 40K, 50K
3. available distributions: 15DEG, 20DEG, 25DEG, 30DEG, 35DEG, 40DEG, 45DEG, 50DEG, 55DEG

Description

Cap Assembly will include the cap, lens and o-ring

Three piece snap on optic only

Includes LED array, optics,

Part Number

D. LED Driver

DRVAPINE xx1 xxx2

1. available performance packages: P1,P2
2. available voltage: MVOLT

E. Knuckle

KAPINE xx1 xx2 xx3

1. add paint finish




Description

Includes LED driver and surge

Knuckle Assembly

PINE INTERNAL ACCESSORIES

Internal Accessories can be ordered separate and are field replaceable

| | | |
|--|---|--|
|  | INTERNAL HONEYCOMB LOUVER <ul style="list-style-type: none"> Hexagonal cell louver with 45° cut-off includes retaining ring | Example: IHL PINE |
|  | INTERNAL ACCESSORY LENSES <ul style="list-style-type: none"> L1 Prismatic Lens L2 Linear Spread Lens L3 Softening Lens includes retaining ring | Examples: LAPINE L1 LAPINE L2 LAPINE L3 |
|  | INTERNAL COLORED FILTERS <ul style="list-style-type: none"> FA Amber FG Green FGD Green Dichroic FLB Light Blue FM Mercury Vapor FMB Medium Blue FMBD Medium Blue Dichroic FR Red FRD Red Dichroic includes retaining ring | Examples: CFPINE FA CFPINE FG CFPINE FGD CFPINE FLB CFPINE FM CFPINE FMB CFPINE FMBD CFPINE FR CFPINE FRD |

The difference between the FLC and WSL lens

