

FEATURES & SPECIFICATIONS

INTENDED USE — SBL LED wraparound provides a digital lighting platform to deliver general ambient lighting for surface-mount applications. The SBL provides a similar look to that of an existing fluorescent wrap with all of the excellent benefits of LED: energy savings, long life, and maintenance savings. Ideal for closets, storage rooms, and offices.

CONSTRUCTION — Linear side prisms control brightness, pyramidal bottom prisms minimize lamp image. Continuous side flanges on fixture body provide light trap and continuous diffuser support to prevent accidental opening and simplify maintenance. Full depth, white enamel end plates.

Die-formed from code gauge cold-rolled steel. Channel cover snaps into place without the use of tools. Full end cap factory installed to reduce job site labor.

OPTICS — The translucent white diffuser reduces glare and pixilation without impacting performance.

ELECTRICAL — Long-life LEDs, coupled with high-efficiency drivers, provide superior quantity and quality of illumination for extended service life. 90% LED lumen maintenance at 50,000 hours (L90/50,000). The LEDs have a CRI of 82.

eldoLED driver options deliver choice of dimming range and choices for control, while assuring flicker-free, low-current inrush, 89% efficiency and low EMI.

Pair the SBL with the fixture mount Sensor Switch LSXR sensor for additional energy savings when the space is unoccupied. The LSXRHL sensor dims the fixture down to a low-level setting when there is no occupancy. This option is ideal for stairwells, back rooms, and closets due to the low occupancy level in those spaces.

Optional nLight® embedded controls continuously monitor system performance, allow for constant lumen management / compensation function, facilitate simple “plug-and-play” network and controls upgrading via Cat-5 cable. Ballast disconnect provided where required to comply with US and Canadian codes.

LISTINGS — CSA certified to meet U.S. and Canadian standards.

Damp listed.

DesignLights Consortium® (DLC) qualified product. Not all versions of this product may be DLC qualified. Please check the DLC Qualified Products List at www.designlights.org/QPL to confirm which versions are qualified.

GOVERNMENT PROCUREMENT — BAA – Product with the BAA option qualifies as a domestic end product under the Buy American Act as implemented in the FAR and DFARS. Product with the BAA option also qualifies as manufactured in the United States under DOT Buy America regulations. BABA – Build America Buy America: Product with the BAA option also qualifies as produced in the United States under the definitions of the Build America, Buy America Act.

Please refer to www.acuitybrands.com/buy-american for additional information.

WARRANTY — 5-year limited warranty. This is the only warranty provided and no other statements in this specification sheet create any warranty of any kind. All other express and implied warranties are disclaimed. Complete warranty terms located at: www.acuitybrands.com/support/warranty/terms-and-conditions

Note: Actual performance may differ as a result of end-user environment and application. All values are design or typical values, measured under laboratory conditions at 25 °C. Specifications subject to change without notice.

Catalog Number
Notes
Type

Square-basket LED Wraparound

SBL2



2'
LED



A+ Capable Luminaire

This item is an A+ capable luminaire, which has been designed and tested to provide consistent color appearance and out-of-the-box control compatibility with simple commissioning.

- All configurations of this luminaire meet the Acuity Brands' specification for chromatic consistency
- This luminaire is part of an A+ Certified solution for nLight® control networks when ordered with drivers marked by a **shaded background***
- This luminaire is part of an A+ Certified solution for nLight control networks, providing advanced control functionality at the luminaire level, when selection includes driver and control options marked by a **shaded background***

To learn more about A+, visit www.acuitybrands.com/aplus.

*See ordering tree for details

SBL2 LED Wraparound



A+ Capable options indicated by this color background.

ORDERING INFORMATION

Lead times will vary depending on options selected. Consult with your sales representative.

Example: SBL2 2000LM 80CRI 35K MIN10 GZT MVOLT

SBL2		Lumens ¹		CRI		Color temperature		Minimum Dimming Level		Dimming		Voltage	
SBL2	2' LED wrap	2000LM	2000 lumens	80CRI	80 CRI	30K	3000 K	MIN10	Dims to 10% ²	(blank)	none ¹⁰	MVOLT	120-277V
						35K	3500 K	MIN1	Dims to 1% ³	GZT	Generic 0-10V Dimming	347	347V ^{5,11}
						40K	4000 K	NODIM	On/off, non-dimming ⁴	ZT	eldoLED 0-10 Dimming		
						50K	5000 K	SLD	Step-level dimming ⁴				

Emergency Option	Control Input/ Lumen Management Options ¹⁰	Occupancy Control Options	Occupancy Sensor Technology Option	Options
EMG For use with nLight on generator supply EM power ⁶	NLIGHT nLight enabled CL80 NLIGHT nLight enabled, constant lumen output, 80%	LSXRHL Sensor Switch [®] fixture mount sensor with High/Low occupancy operation ⁸ LSXR10 Sensor Switch [®] fixture mount sensor with on/off occupancy operation ⁷	PIR Passive Infrared ¹²	BAA Buy America(n) Act and/or Build America Buy America Qualified BDP Factory Installed Ballast Disconnect Plug

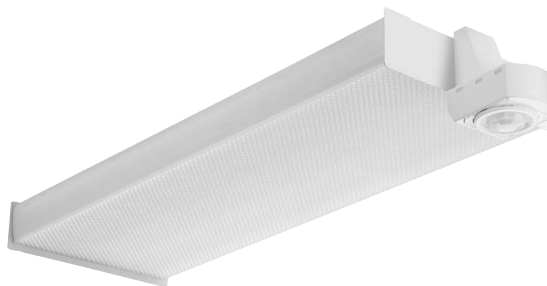
ORDERING INFORMATION

Catalog number	UPC	Description	Lumens	Color temperature	Voltage	Wattage	Pallet qty	Standard carton qty.
SBL2 LP835 ⁹	190887819458	2' LED Wraparound	1,937	3500 K	120-277	17	140	1
SBL2 LP840 ⁹	190887819489	2' LED Wraparound	1,967	4000 K	120-277	17	140	1

Notes

- 1 Approximate lumen output.
- 2 Requires GZT control option.
- 3 Requires GZT, ZT, or NLIGHT control.
- 4 Not available with Control or Sensor Options.
- 5 Not available with SLD option.
- 6 nLight EMG option requires a connection to existing nLight network. Power is provided from a separate N80 or N100 enabled fixture. Requires NLIGHT.
- 7 Requires MIN1, ZT and PIR options.
- 8 Dims to approximately 10% light output when unoccupied.
- 9 Product in stock.
- 10 When Control Input/ Lumen Management option specified leave Dimming section blank.
- 11 347 not available with battery option
- 12 Only available with Occupancy Control option.

Performance Data			
Lumen Package	Lumens	Input Watts	LPW
2000LM 80CRI 30K	1894	16.9	112
2000LM 80CRI 35K	1937	16.9	115
2000LM 80CRI 40K	1967	16.9	116
2000LM 80CRI 50K	2039	16.9	121

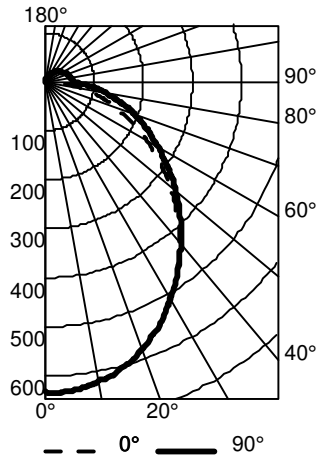


Sensor Switch LSXRHL Sensor	
Lens type:	10 - Low Mount 360° coverage
Dimming:	HL - High/Low Occupancy operation
Min Dim Level:	3V - approximately 10% light output when unoccupied
Time Delay:	5M - 5 minutes

SBL2 LED Wraparound

PHOTOMETRICS

SBL2 2000LM 80CRI 35K



CP Summary

	0°	90°
0°	633	633
5°	630	632
15°	604	604
25°	549	549
35°	470	471
45°	379	389
55°	286	307
65°	195	231
75°	114	158
85°	44	91
90°	7	57

Coefficients of Utilization

pw	Coefficients of Utilization								
	80%			70%			50%		
pc	70%	50%	30%	50%	30%	10%	50%	30%	10%
0	117	117	117	114	114	114	107	107	107
1	106	101	96	98	94	90	92	89	86
2	96	87	80	85	78	73	80	75	70
3	88	77	68	75	67	61	70	64	59
4	80	68	59	66	58	51	63	55	50
5	74	61	52	59	51	44	56	49	43
6	68	55	46	53	45	39	51	43	38
7	63	50	41	48	40	34	46	39	33
8	59	45	37	44	36	31	42	35	30
9	55	41	33	41	33	27	39	32	27
10	51	38	30	38	30	25	36	29	24

Zonal Lumen Summary

Zone	Lumens	% Lamp	% Fixture
0° - 30°	484	25.0	25.0
0° - 40°	781	40.3	40.3
0° - 60°	1348	69.6	69.6
0° - 90°	1795	92.7	92.7
90° - 120°	94	4.9	4.9
90° - 130°	114	5.9	5.9
90° - 150°	136	7.0	7.0
90° - 180°	141	7.3	7.3
0° - 180°	1937	100.0	100.0

MOUNTING DATA

Suspension Kit Ceiling Types: F1 for use with most T-bar and screw slot grid ceiling applications. Designed for on-grid and off-grid installations.

F2 for use with recessed or surface-mount horizontal J-box applications.

For unit or row installation; surface or suspend mounting.

Individual installation — Two single-stem hangers required.

For aircraft cable, one STACG_, STACGF_, or STACGE_ required for each suspension point.

Note: 2' configurations with emergency option cannot be stem mounted.

See ACCESSORIES below for hanging devices.

DIMENSIONS

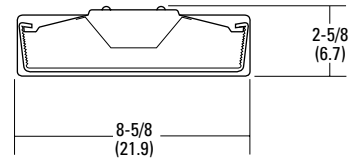
All dimensions are inches (centimeters) unless otherwise noted.

Specifications

Length: 24 (61.0)

Width: 8-5/8 (21.9)

Depth: 2-5/8 (6.7)



All dimensions are inches (centimeters) unless otherwise indicated.

