



4415 BASE OR YOKE MOUNT LED Fountain Fixture

HIGHLIGHTS

- Up to 726 lumens
- Temperature sensing low water cut-off standard
- Cast bronze fixture housing with stainless steel fasteners
- Tempered borosilicate clear glass
- Freestanding base and aimable yoke included
- Yoke includes through hole allowing fixture to be bolted to any flat surface
- Suitable for wet or dry application

5
YEAR
warranty



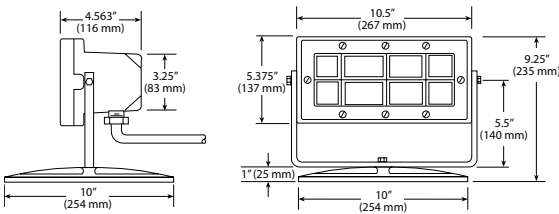
IP68



Specifications

Length:	10-1/2" 267 mm
Width:	4-9/16" 116 mm
Height:	9-1/4" 235 mm
Weight:	20lbs

DIMENSIONS



LUMEN PACKAGES

	NSP	MFL	FL	WFL
Delivered Lumens	302	311	394	465
Watts	15	15	15	15
LPW	21	21	27	33
Peak Candela	4708	336	239	200

Note: Information based on 3000K

ORDERING INFORMATION

EXAMPLE: 4415 LED WHT53K 120 FL BM CSL10 LP

Model	Lamp Type	LED Color	Voltage	Distribution
4415	LED	WHT30K White WHT41K White WHT53K White BLU Blue GRN Green RED Red	120	NSP Narrow spot MFL Medium flood FL Flood WFL Wide flood
Mounting	Mounting Accessory	Cord Set Length	Lamp	Listing
BM Base mount YM Yoke mount ALB Adjustable locking base	RSR__ 4"-24" riser stem, available in 2" increments Note: RSR is only used with ALB mounting. RSR6 will be used if no riser length is specified and ALB is chosen.	CSL__ 10'-120' of cord available in 5' increments	LP LED array included	CSA Optional Canadian listing (for sale in Canada only)

ELECTRICAL LOAD

Light Engines	System Watts	Current (A)
Linear	14.25	0.12

LUMEN AMBIENT TEMPERATURE (LAT) MULTIPLIERS

Use these factors to determine relative lumen output for average ambient temperatures from 0-40°C (32-104°F).

Ambient	Lumen Multiplier
0°C / 32°F	1.02
10°C / 50°F	1.01
20°C / 68°F	1.00
25°C / 77°F	1.00

PERFORMANCE DATA

LUMEN OUTPUT

Lumen values are from photometric tests performed in accordance with IESNA LM-79-08. Data is considered to be representative of the configurations shown, within the tolerances allowed by Lighting Facts. Actual performance may differ as a result of end-user environment and application. Contact factory for performance data on any configurations not shown here.

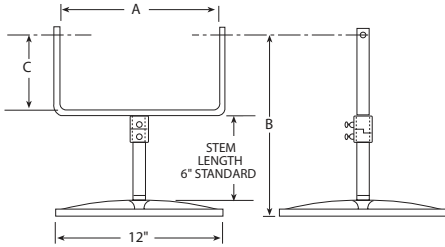
Photometric data for underwater lighting is based on the theoretical output of a dry fixture. The final output of a fixture placed in water is determined by the depth that the fixture is placed, the clarity and turbulence of the water and the color of the surrounding concrete and/or tile.

Performance Package	System Watts	Distribution	30K (3000K, 85CRI)			41K (4100K, 70CRI)			53K (5300K, 70CRI)		
			Max Cd	Lumens	LPW	Max Cd	Lumens	LPW	Max Cd	Lumens	LPW
3000K 85CRI	15	NSP	4708	302	21	7099	518	39	7933	554	40
		MFL	336	311	21	405	340	24	408	340	24
		FL	239	394	27	521	609	43	541	635	46
		WFL	200	465	33	326	716	52	319	726	51

OPERATING TEMPERATURE: -40°C Through 50°C

MOUNTING DETAIL

ALB DIMENSIONS



A INSIDE WIDTH	B STANDARD HEIGHT	C YOKE CLEARANCE	D B MINM (CUT STEM)
10-1/2	12-5/8	5-1/2	8-5/8

SPECIFICATIONS AND FEATURES

FIXTURE HOUSING, ROCK GUARD AND BASE: Heavy wall cast bronze construction. Natural bronze finish.

LED: 6 LEDs driven at 615 mA with maximum power consumption of 12 watts. Lumen maintenance of individual LED light sources have been individually tested to IESNA LM-80 standards.

LENS: Tempered borosilicate clear glass.

GASKET: Single piece molded U-shaped silicone.

MOUNTING: ALB custom base enables underwater lighting fixtures to be mounted 2" below the water level regardless of the depth of the fountain. This is achieved by securing the base in 3 places and cutting a length of 3/4" red brass pipe (threaded on one end) to the desired size. The locking mechanism allows you to remove the fixture for re-lamping without upsetting the fixture adjustment. BM base mount includes an aimable yoke and base that is freestanding on the bottom of the fountain. YM yoke mount includes an aimable yoke with a thru hole in the bottom that may be bolted to any flat surface. Fixture may be mounted on the bottom or sides or the fountain.

RISER: RSR6 if no length specified and ALB is chosen. 4"-24" Riser stem, available in 2" increments.

CORD: Minimum of 10' of #16-3ST US standard submersible rated cord for 120V fixtures. Cord entrance is brass water-tight seal and epoxy encapsulated. Cord length must be specified.

FACTORY LEAK TESTED: Fixtures are tested at 10 PSI (0.70kg/cm²) internal pressure while totally submerged in water.

LOW WATER CUT-OFF: Temperature sensing low water cut-off standard.

FASTENERS: Stainless Steel.

LISTING: CSA, CSA_{US}, IP68. Suitable for wet or dry application.

GOVERNMENT PROCUREMENT

BAA – Buy America(n) Act: Product qualifies as a domestic end product under the Buy American Act as implemented in the FAR and DFARS. Product also qualifies as manufactured in the United States under DOT Buy America regulations.

BABA – Build America Buy America: Product qualifies as produced in the United States under the definitions of the Build America, Buy America Act.

Please refer to www.acuitybrands.com/resources/buy-american for additional information.

WARRANTY: 5-year limited warranty. This is the only warranty provided and no other statements in this specification sheet create any warranty of any kind. All other express and implied warranties are disclaimed. Complete warranty terms located at: www.acuitybrands.com/support/warranty/terms-and-conditions

NOTE: Actual performance may differ as a result of end-user environment and application. All values are design or typical values, measured under laboratory conditions at 25 °C. Specifications subject to change without notice.