

FEATURES & SPECIFICATIONS

INTENDED USE — Ideal where high brightness and high illumination levels are required such as retail, industrial and warehouse applications. **Certain airborne contaminants can diminish the integrity of acrylic and/or polycarbonate. Click here for Acrylic-Polycarbonate Compatibility table for suitable uses.**

ATTRIBUTES — Fixtures assembled with snap and screwed together components. Available in a variety of lengths and lamp configurations. Gripper-back design for superior strength and rigidity.

CONSTRUCTION — Heavy-duty, 20-gauge channel, cold-rolled steel.

Sturdy channel cover secured by quarter-turn latch for tool-less access to wireway. Screw-on endplates.

Finish: Five-stage iron-phosphate pretreatment ensures superior paint adhesion and rust resistance.

Finish is high-gloss baked white polyester.

ELECTRICAL — Thermally protected, resetting, Class P, HPF, UL listed, CSA Certified ballast is standard.

Fixture is suitable for damp locations. AWM, TFN or THHN wire used throughout, rated for required temperatures.

INSTALLATION — For unit or row installation, suspended mounting. Channel connector furnished standard.

LISTINGS — UL Listed for 25°C ambient temperatures and damp locations.

UL Listed to US and Canadian safety standards. Optional: Mexico NOM.

WARRANTY — 1-year limited warranty. Complete warranty terms located at:

www.acuitybrands.com/support/warranty/terms-and-conditions

Note: Actual performance may differ as a result of end-user environment and application.

Specifications subject to change without notice.

Catalog Number
Notes
Type



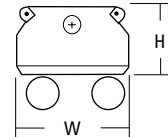
Heavy-Duty Strip

UND

T12, ELECTRONIC BALLASTS
2', 3', 4', 6' or 8' length
1 or 2 lamps

Specifications

Length:	24 (61.0)
	36 (91.4)
	48 (121.9)
	72 (182.9)
	96 (243.8)
Width:	4-3/8 (11.1)
Fixture Depth:	3-11/16 (9.4)



All dimensions are inches (centimeters) unless otherwise noted.

ORDERING INFORMATION

For shortest lead times, configure products using **bolded options**.

Example: UND 2 96HO 120 CW20 MBX

UND				
Series	Number of lamps	Lamp type	Voltage	Options
UND Heavy-duty channel for T12 For tandem double-length unit, add prefix T. Example: TUND	1 ¹ 2 Not included.	48HO 60W T12 800MA (48") ¹ 72HO 85W T12 800MA (72") 96HO 110W T12 800MA (96")	120 277 347	<u>Shipped installed in fixture</u> CW20 Cold-weather ballast -20°F starting GEB10PS Electronic ballast, <10% THD, program start GEB10RS Electronic ballast, <10% THD, rapid start ³ EL14 Emergency battery pack (nominal 1400lumens), see Life Safety Section GLR Internal fast-blow fuse GMF Internal slow-blow fuse PLR_ Plug-in wiring; specify 1,2 or 3 branch circuits and hot wires (A=black, B=red, C=blue, AB or AC) TILW Tandem in-line wiring NOM NOM Certified

Accessories: Order as separate catalog number.

SQ_	Swivel stem hanger (specify length in 2" increments up to 48")
1B	Ceiling spacer, 1.5" to 2.5" from ceiling
HC36 M12	Hanger chain, 36" (1 pair)
THUN J2	Tong Hanger (1Pair)
HRUND1 J2	Hooker™ T-bar hanger, 1-1/2" from ceiling (1 pair)
CSMR48	Symmetric reflector, 4' white ²
CASR48	Asymmetric reflector 4' white ²
WGCUN	4' white wireguard (order two for 8' fixtures) ²

Notes

- Not available with 347V.
- Order two for 8' fixtures. For strip channels only.
- For 347 only.

UND T12, Magnetic Ballasts

MOUNTING DATA

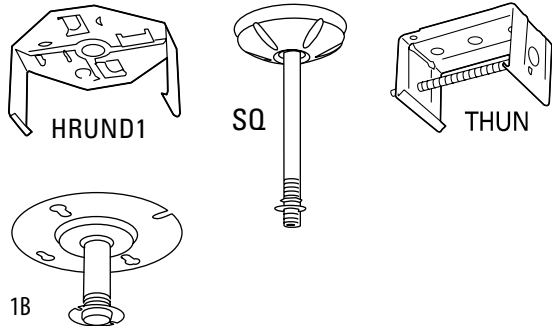
For unit or row installation, surface or suspended mounting. Use hanger appropriate for fixture width.

Unit installation — Minimum of two hangers required.

Row installation — One hanger per channel plus one per row required.

Hooker® (HRUND1, HRUNS1), HC36 and THUN Hangers — Minimum two per channel (unit and row).

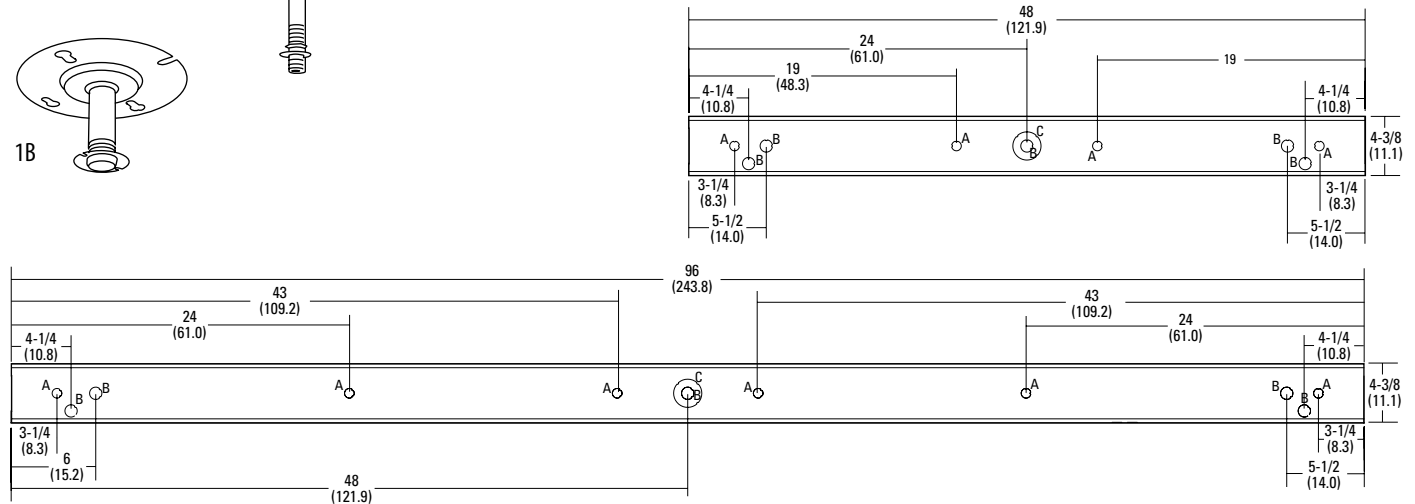
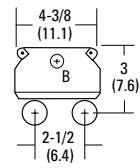
See ACCESSORIES below for hanging devices.



DIMENSIONS

Inches (centimeters). Subject to change without notice.

- A = 11/16 (18) Dia. K.O.
B = 7/8 (22) Dia. K.O.
C = 2 (51) Dia. K.O.



PHOTOMETRICS

Calculated using the zonal cavity method in accordance with IESNA LM41 procedure. Floor reflectances are 20%. Lamp configurations shown (2 54T5HO) are typical. All data based on 25°C. Full photometric data on these and other configurations available upon request.

UND 2 96HO

Report: LTL12646

LUMENS PER LAMP: 8350

Luminaire Efficiency: 91.6%

Coefficients of Utilization

	80%			50%			30%		
	70%	50%	30%	50%	30%	10%	50%	30%	10%
0	104	104	104	90	90	90	81	81	81
1	92	87	82	75	71	68	67	65	62
2	83	74	67	64	59	54	57	53	50
3	75	64	56	55	49	44	50	45	41
4	68	56	48	48	42	37	44	38	34
5	62	50	41	43	36	31	39	33	29
6	57	44	36	39	32	27	35	29	25
7	53	40	32	35	28	23	32	26	22
8	49	36	28	32	25	21	29	23	19
9	46	33	25	29	23	18	26	21	17
10	43	30	23	27	21	17	24	19	15

Zonal Lumen Summary

Zone	Lumens	% Lamp	% Fixture
0° - 30°	2286	13.7	15.0
0° - 40°	3886	23.3	25.4
0° - 60°	7586	45.4	49.6
0° - 90°	11677	69.9	76.4
90° - 180°	3613	21.6	23.6
0° - 180°	15290	91.6	100.0