

FEATURES & SPECIFICATIONS

INTENDED USE — Typical applications include corridors, lobbies, conference rooms and private offices.

CONSTRUCTION — Heavy-gauge aluminum housing.

Ceiling mount for direct installation to 4" octagonal or square junction box.

Pendant mount entry for 3/8" National Pipe Thread stem; wires supplied by others.

Textured polyester powder paint finish standard.

Multiple ceiling, pendant, cord, and wall mount options available.

OPTICS — LEDs are binned to a 3-step SDCM; 80 CRI minimum. 90 CRI optional.

LED light source concealed with diffusing optical lens.

General illumination lighting with 1.0 S/MH and 55° cutoff to source and source image.

Self-flanged anodized reflectors in specular, semi-specular, or matte diffuse finishes. Also available in white and black painted reflectors.

ELECTRICAL — Multi-volt (120-277V, 50/60Hz) 0-10V dimming drivers mounted to junction box, 10% or 1% minimum dimming level available.

347V available option; transformer must be field-installed to an accessible remote-mounted junction box.

0-10V dimming fixture requires two (2) additional low-voltage wires to be pulled.

70% lumen maintenance at 60,000 hours.

LISTINGS — Certified to US and Canadian safety standards. Damp location standard (wet location, covered ceiling optional). ENERGY STAR® certified product.

GOVERNMENT PROCUREMENT — BAA – Buy America(n) Act: Product qualifies as a domestic end product under the Buy American Act as implemented in the FAR and DFARS. Product also qualifies as manufactured in the United States under DOT Buy America regulations.

BABA – Build America Buy America: Product qualifies as produced in the United States under the definitions of the Build America, Buy America Act.

Please refer to www.acuitybrands.com/buy-american for additional information.

WARRANTY — 5-year limited warranty. This is the only warranty provided and no other statements in this specification sheet create any warranty of any kind. All other express and implied warranties are disclaimed. Complete warranty terms located at: www.acuitybrands.com/support/warranty/terms-and-conditions

Note: Actual performance may differ as a result of end-user environment and application. All values are design or typical values, measured under laboratory conditions at 25 °C. Specifications subject to change without notice.

LDN4CYL 3500K AR LSS 80CRI			
Nominal	Lumens	Wattage	Lm/W
500	523.6	5.74	91.2
750	751.1	8.6	87.3
1000	1045	10.58	98.8
1500	1512	17.5	86.4
2000	2006	22.12	90.7
2500	2551	26.1	97.7
3000	3007	32.1	93.7
4000	4212	43	98.0

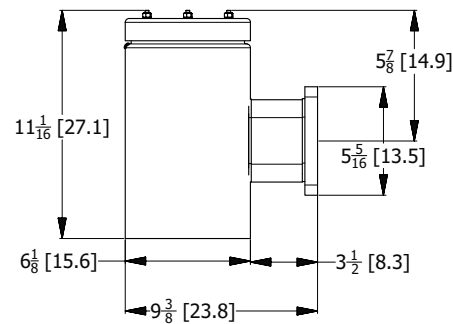
Catalog Number
Notes
Type

LDN4CYL

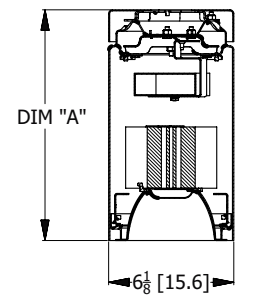
4" CYLINDER
Non-IC



* All dimensions are inches (centimeters) unless otherwise noted.



LDN4 CYLINDER WALL MOUNT



LDN4 CYLINDER

DIMENSION TABLE	
STYLE	DIM "A"
CEILING MOUNT (FCM)	10-13/16
CEILING MOUNT WET LOCATION (FCM WL)	10-13/16
PENDANT MOUNT (PM)	10
PENDANT MOUNT WET LOCATION (PM WL)	11
CABLE MOUNT (ACC)	9-13/16

LDN4CYL

A+ Capable options indicated by this color background.

ORDERING INFORMATION Lead times will vary depending on options selected. Consult with your sales representative. Example: LDN4CYL 35/15 L04AR LSS MVOLT EZ1 FCM DWHG

LDN4CYL												
Series	Color temperature		Lumens		Aperture/Trim Color		Finish		Voltage			
LDN4CYL 4" cylinder	27/	2700K	05	500 lumens	L04	Downlight	AR	Clear	LSS	Semi-specular	MVOLT	Multi-volt
	30/	3000K	07	750 lumens	LW4 ¹	Wallwash	WR ‡	White	LD	Matte diffuse	120	120V
	35/	3500K	10	1000 lumens			BR ‡	Black	LS	Specular	277	277V
	40/	4000K	15	1500 lumens								
	50/	5000K	20	2000 lumens								

Driver ³	Mounting	Options	Architectural Colors ‡
GZ10 0-10V driver dims to 10%	FCM Ceiling mount	SF ⁶ Single fuse	DWHG Matte white (standard)
GZ1 0-10V driver dims to 1%	WM Wall mount	90CRI High CRI (90+)	DDB Dark bronze
EZ1 0-10V eldoLED driver with smooth and flicker-free deep dimming performance down to 1%	PM ‡ Pendant 3/8" thread mount	WL ‡ Wet location	DBL Black
	ACC ‡ 10ft aircraft cable and cord mount	nLight Options:	DWH Glossy white
	ACC180 ‡ 15ft aircraft cable and cord mount	NPP16D ‡ nLight® network power/relay pack with 0-10V dimming for non-eldoLED drivers (GZ10, GZ1).	DMB Medium bronze
		NPP16DER ‡ nLight® network power/relay pack with 0-10V dimming for non-eldoLED drivers (GZ10, GZ1). ER controls fixtures on emergency circuit.	DNA Natural aluminum
		NPS80EZ ‡ nLight® dimming pack controls 0-10V eldoLED drivers (EZ10, EZ1).	DSS Sandstone
		NPS80EZER ‡ nLight® dimming pack controls 0-10V eldoLED drivers (EZ10, EZ1). ER controls fixtures on emergency circuit.	DGC Charcoal grey
			DTG Tennis green
			DBR Bright red
			DSB Steel blue

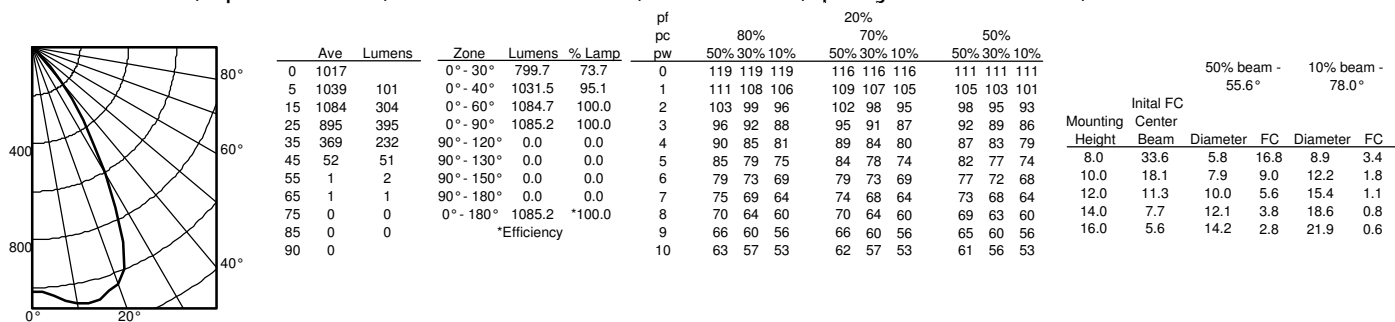
‡ Option Value Ordering Restrictions	
Option value	Restriction
LW4	Not available in ACC mount.
WR, BR	Not available with finishes.
PM	Supplied with 10" supply and dimming connections.
ACC, ACC180	White cord supplied with white housings. All other finishes supplied with black cord.
SF	Must specify voltage 120V or 277V.
NPP16D, NPP16DER, NPS80EZ, NPS80EZER	Specify voltage. ER for use with generator supply EM power. Will require an emergency hot feed and normal hot feed. Interface remote mounted. Access panel (supplied by others) recommended. See UL 924 Sequence of Operation table.
WL	Not available with ACC & ACC180 mounting options.
Architectural Colors	Additional architectural colors available; see www.lithonia.com/archcolors .
CYS, CRS	Color and length of stem must be specified (from 6" to 240" in even increments in maximum sections of 48"). Ex.: CYS06 DWHG. Ceiling attachment for interior use. Consult factory for exterior use.
SDT 347/120 75VA	Must be field-installed to an accessible remote-mounted junction box

Accessories: Order as separate catalog number. (shipped separately)	
CYS ‡	3/8" stem and canopy with 5° "hang straight" swivel
CRS ‡	3/8" stem and canopy with 45° swivel
SDT 347/120 75VA12 ‡	347V Step-down transformer

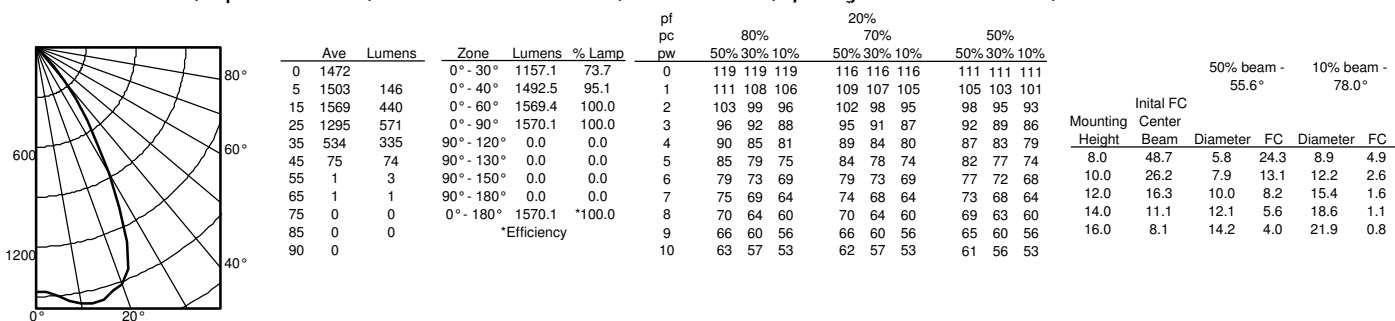
PHOTOMETRY

Distribution Curve	Distribution Data	Output Data	Coefficient of Utilization	Illuminance Data at 30" Above Floor for a Single Luminaire
--------------------	-------------------	-------------	----------------------------	--

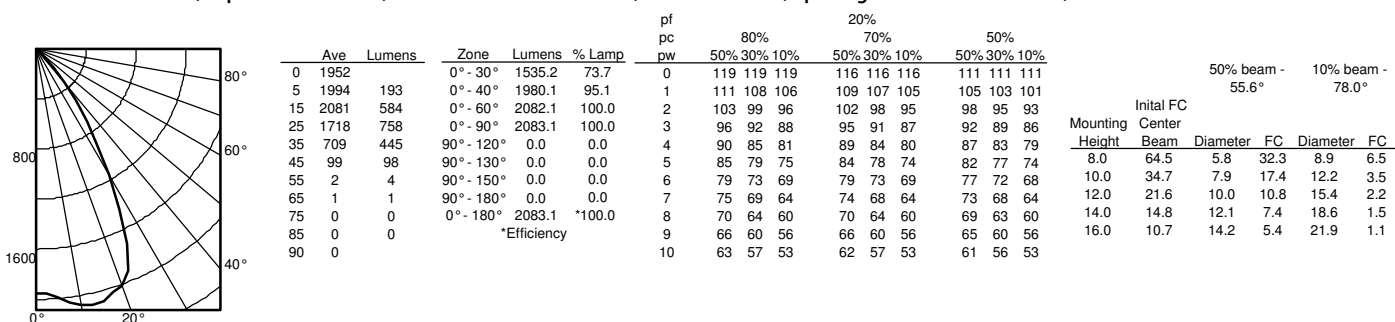
LDN4 35/10 L04AR, input watts: 10.58, delivered lumens: 1085.2, LM/W = 102.57, spacing criterion at 0= 1.04, test no. ISF 30712P424.



LDN4 35/15 L04AR, input watts: 17.5, delivered lumens: 1570.1, LM/W = 89.72, spacing criterion at 0= 1.04, test no. ISF 30712P429.



LDN4 35/20 L04AR, input watts: 22.12, delivered lumens: 2083.1, LM/W = 94.17, spacing criterion at 0= 1.04, test no. ISF 30712P434.



LUMEN OUTPUT MULTIPLIERS - FINISH			
	Clear (AR)	White (WR)	Black (BR)
Specular (LS)	1.0	N/A	N/A
Semi-specular (LSS)	0.950	N/A	N/A
Matte diffuse (LD)	0.85	N/A	N/A
Painted	N/A	0.87	0.73

LUMEN OUTPUT MULTIPLIERS - CCT					
	2700K	3000K	3500K	4000K	5000K
80CRI	0.950	0.966	1.000	1.025	1.101

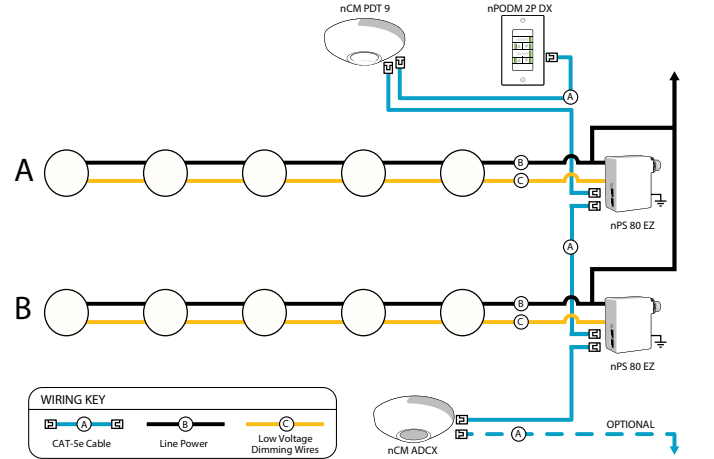
LUMEN OUTPUT MULTIPLIERS - CRI	
80	1.0
90	0.874

Notes

- Tested in accordance with IESNA LM-79-08.
- Tested to current IES and NEMA standards under stabilized laboratory conditions.
- CRI: 80 typical.

ADDITIONAL DATA

COMPATIBLE 0-10V WALL-MOUNT DIMMERS		
MANUFACTURER	PART NO.	POWER BOOSTER AVAILABLE
Lutron®	Diva® DDTV	
	Diva® DVSCTV	
	Nova T® NTFTV	
	Nova® NFTV	
Leviton®	AWSMT-7DW	CN100
	AWSMG-7DW	PE300
	AMRMG-7DW	
	Leviton Centura Fluorescent Control System	
	IllumaTech® IP7 Series	
Synergy®	ISD BC	RDMFC
	SLD LPCS	
	Digital Equinox (DEQ BC)	
Douglas Lighting Controls	WPC-5721	
Entertainment Technology	Tap Glide TG600FAM120 (120V)	
	Tap Glide Heatsink TGH1500FAM120 (120V)	
	Oasis 0A2000FAMU	
Honeywell	EL7315A1019	EL7305A1010 (optional)
	EL7315A1009	
HUNT Dimming	Preset slide: PS-010-IV and PS-010-WH	
	Preset slide: PS-010-3W-IV and PS-010-3W-WH	
	Preset slide, controls FD-010: PS-IFC-010-IV and PS-IFC-010-WH-120/277V	
	Preset slide, controls FD-010: PS-IFC-010-3W-IV and PS-IFC-010-3W-WH-120/277V	
	Remote mounted unit: FD-010	
Lehigh Electronic Products	Solitaire	PBX
PDM Electrical Products	WPC-5721	
Starfield Controls	TR61 with DALI interface port	RT03 DALInet Router
WattStopper®	LS-4 used with LCD-101 and LCD-103	



nLight® Control Accessories: Order as separate catalog number. Visit www.sensorswitch.com/nLight for complete listing of nLight controls.			
WallPod stations	Model number	Occupancy sensors	Model number
On/Off	nPODM [color]	Small motion 360°, ceiling (PIR / dual tech)	nCM 9 / nCM PDT 9
On/Off & Raise/Lower	nPODM DX [color]	Large motion 360°, ceiling (PIR / dual tech)	nCM 10 / nCM PDT 10
Graphic Touchscreen	nPOD GFX [color]	Wide view (PIR / dual tech)	nWV 16 / nWV PDT 16
Photocell controls	Model number	Wall Switch w/ Raise/Lower (PIR / dual tech)	nWSX LV DX / nWSX PDT LV DX
Dimming	nCM ADCX	Cat-5 cables (plenum rated)	Model number
		10', CAT5 10FT	CAT5 10FT J1
		15', CAT5 15FT	CAT5 15FT J1

A+ Capable Luminaire

This item is an A+ capable luminaire, which has been designed and tested to provide consistent color appearance and out-of-the-box control compatibility with simple commissioning.

- All configurations of this luminaire meet the Acuity Brands' specification for chromatic consistency
- This luminaire is part of an A+ Certified solution for nLight® control networks when ordered with drivers marked by a **shaded background***
- This luminaire is part of an A+ Certified solution for nLight control networks, providing advanced control functionality at the luminaire level, when selection includes driver and control options marked by a **shaded background***

To learn more about A+, visit www.acuitybrands.com/aplus.

*See ordering tree for details