

# Phuzion™ PHG LED High Bay

Beyond Basic Performance For Your Basic Needs

# Designed to Deliver Performance That's Anything But Basic.

The upgraded Phuzion™ PHG LED high bay will elevate your outdated HID or fluorescent lighting to create an environment that is comfortably lit, protected from contaminants, and is virtually maintenance-free. Delivering significant energy savings of 50% or more, the Phuzion PHG LED high bay is precisely designed to the performance and quality standards you've come to expect from Holophane®.

Contact your LC certified Holophane sales representative and visit [www.holophane.com](http://www.holophane.com) to learn more about the Phuzion PHG LED high bay.

## At a Glance

### **More efficient, more lumens, more options!**

Energy and Maintenance Savings Long life LEDs help to cut energy usage by 50% or more and the added lumens and options allow you to boldly use the PHG where you never have before.

**Eliminate Dark Ceilings** with custom optics that deliver up to 12% upright and help reduce the cave-like effect common in high bay applications.

**Battery Back Up available** onboard or remote, helps meet a variety of ambient temperature requirements.

**Dynamic temperature sensing** is standard to protect the electronic components in the event the maximum operating ambient temperature is exceeded.







## Typical Applications

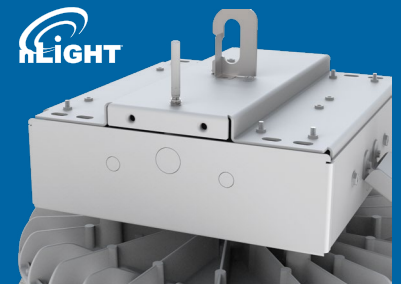
- Light Manufacturing
- Warehouse
- Automotive
- Retail
- Food Storage
- Gymnasiums

### Prism-pack® Optics

Prismatic borosilicate optic with sealed aluminum cover to minimize dirt accumulation and improve optical efficiency. Use when uplight is not desired or required.

### Borosilicate Prismatic Glass

Non-deteriorating glass reflector delivers the highest level of illumination while providing glare-free and uniform performance.



### nLight® AIR Wireless Networking



Integrated smart sensors for dimming and switching modules for additional energy savings and to support building energy codes.

**Mounting Options:** Hook or Pendant Mounts support simple one-for-one replacement of outdated lighting, simplifying LED installations and upgrades.

**++NEW Aircraft Cable mounting** method ideal for replacing a linear fixture with a PHG.

+ Steel Hook



+ Iron Hook



+ Aircraft Cable



+ UPH



# The Phuzion™ Round LED High Bay Family



**Phuzion™ PHZ**  
High Ambient Up To 70°C



**Phuzion™ PHS**  
Customizable Uplight



**Phuzion™ PHZL**  
Up to 100,000 Lumens

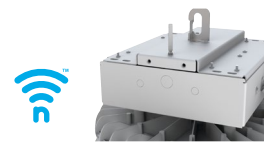
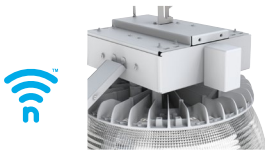
Visit [www.holophane.com](http://www.holophane.com) for the complete Phuzion round high bay family for higher mounting heights, larger lumen packages and intentional uplighting.

## Controls Solutions



nLight® is a sensor-based network digital lighting controls system that offers wired and wireless lighting controls, easily connecting fixtures, sensors, and other control devices to create a digital network. The nLight platform of products enables ease in specification, installation, and ownership, making it the go-to digital lighting controls platform for specifiers, contractors, and building owners.

nLight® AIR wireless lighting controls are a smart solution for simplifying installation and aiding in energy code compliance.



## Simple as 1,2,3

1. Install the nLight® AIR fixtures with integrated smart sensor
2. Install the wireless battery-powered wall switch or nLight AIR enabled battery powered ceiling mount sensor
3. With our CLAIRITY™ Pro app, pair the fixtures with the wall switch or remote ceiling mount sensor and if desired, customize the sensor settings for the intended outcome



rPODB 2P DX



Mobile Device

The Bluetooth® word mark and logos are registered trademarks owned by Bluetooth SIG, Inc. and any use of such marks by Acuity Brands is under license. Other trademarks and trade names are those of their respective owners.

### Benefits of nLight® Lighting Controls in Industrial Applications

#### Savings

Achieve energy and labor savings as well as rebate potential

#### Easy to Use

The nLight AIR integrated sensor is an occupancy sensor and photocell that works out of the box; use the CLAIRITY™ Pro app to adjust sensor settings

#### Scalability

Configure the light you need and easily scale from one room to multiple sites with the nLight platform

#### Aids in Code Compliance

Set light levels in a given space as defined by the specific building code (when entering or leaving a room, as an example)



Warranty Five-year limited warranty. Full warranty terms located at [www.acuitybrands.com/CustomerResources/Terms\\_and\\_conditions.aspx](http://www.acuitybrands.com/CustomerResources/Terms_and_conditions.aspx)  
Product specifications may change without notice. Please contact your sales representative for the latest product information.