

**PRODUCT SPECIFICATIONS**

**WarmDim®** When commissioned for WarmDim®, the luminaire duplicates halogen, with CCT shifting from 3000K at 100% to 1800K at less than 1%  
 • Superb color consistency within 2 SDCM of the Black Body curve over dimming range.

**Tunable White Mode** When commissioned for Tunable White mode, the user has independent control of intensity and CCT from 4350K to 2000K • Superb color consistency within 2 SDCM of the Black Body curve over CCT range.

**Color Rendering** Accurate color rendition with 90 CRI and 70 R9 at 3000K  
 • Minimum 85 CRI and 50 R9 at all other CCTs.

**Control Compatibility** Compatible with most 0-10V dimming systems or DMX512/RDM • Refer to installation instruction [P61.60](#) for detailed wiring schematics.

**Modular Optics** 45° cutoff to source and source image • Field interchangeable optics available with 20° Very Narrow Flood, 26° Narrow Flood, or 35° Flood distributions • Additional distributions of 30°, 40°, 45°, 55° FWHM can be achieved with the use of diffusing films • Patented (US Patent 8,950,911) auto-adjusting optic holder maximizes luminaire efficiency by maintaining optimal LED optic position relative to trim • Accommodates up to three (3) beam control lenses and/or filters.

**Reflector** .040" aluminum, Patented Hyperbolic Reflector (U.S. Patent No. 10,670,227 B2) in clear specular, black specular, clear diffuse, or wheat diffuse Alzak finish provides 45° lamp and lamp image cut-off.

**Trim Style** Trim Ring, Self Flanged and Flangeless reflectors available • Trim ring features beveled knife edge for clean ceiling interface • Self Flanged reflectors with polished or optional white painted flange • For Flangeless installations in drywall ceilings use the FMA3 Flangeless adapter • For Flangeless installations in wood, stone, or tile ceilings the SFM3\*\*\* must be used (specify ceiling thickness and adapter finish).

**Life** Rated for 50,000 hrs at 70% lumen maintenance.

**Buy American** This product is assembled in the USA and meets the Buy America(n) government procurement requirements under FARS, DFARS and DOT. Please refer to [www.acuitybrands.com/buy-american](http://www.acuitybrands.com/buy-american) for additional information.

**Warranty - 5YR** 5-year limited warranty. Complete warranty terms located at: [http://www.acuitybrands.com/CustomerResources/Terms\\_and\\_conditions.aspx](http://www.acuitybrands.com/CustomerResources/Terms_and_conditions.aspx)

**Codes/Labels** UL and cUL listed for through branch wiring, damp locations • Meets energy code Air Leakage requirements per ASTM E283 • Union made.

**Mounting** Non-IC fixtures feature Patented (US Patent 8,038,113) Pro-VI™ bar hanger system, permitting quick placement of housing with 24" on-center joists or suspended ceilings, and vertically adjustable mounting brackets (butterfly brackets) • ICAT fixtures feature bar hangers only.

**Junction Box** ICAT housings are rated for 4 No. 12 AWG 90°C through branch circuit conductors • Non-IC housings are rated for 8 No. 12 AWG 90°C through branch circuit conductors • Includes (5) ½", (1) ¾", and (4) Non-metallic sheathed cable knock-outs • Push-in electrical connectors for field connections.

**Housing/Mounting Frame** Housing painted black for visually dark interior • V-Notch in plaster frame and Patented (US Patent 8,277,090) Tru-Line™ Platform featuring +/- ½" translation aids fixture alignment after installation, prior to drywall.

**AX3 WDTW 3DH**  
**WARMDIM® & TUNABLE WHITE**  
**ADJUSTABLE/DOWNLIGHT/WALL WASH**  
**1000 LUMEN LED**  
 3" HYPERBOLIC DOWNLIGHT TRIM  
**AX3 WDTW with 3DH Trim**



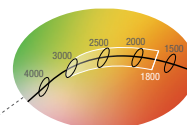
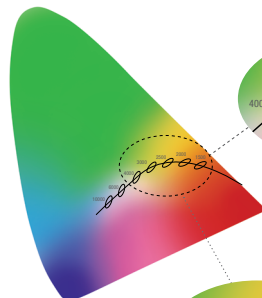
Trim Ring



Self-Flanged



Flangeless

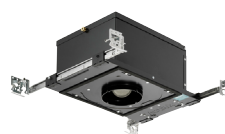


**WarmDim®**

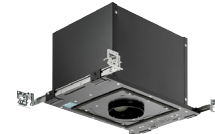
Color temperature warms from 3000K - 1800K when dimmed staying within a 2-step MacAdam ellipse of the Black Body Locus.

**Tunable White**

Color temperature can be tuned from 4350K - 2000K while staying within a 2-step MacAdam ellipse of the Black Body Locus.



AX3 A



AX3 A (ICAT Option)

**Ceiling Thickness** ½" - 7/8" ceiling standard. • For thicker ceilings, order CTA3/125 (7/8"-1 ¼") or CTA3/163 (1 ¼"-1 5/8") • CTA3 not required for wood, stone, or tile Flangeless applications.

Specifications subject to change without notice.

**ORDERING INFORMATION**

Example: AX3 A 10LM WDTW 90CRI 26D ZT 120 3DH BS WHR

Series / Housing Style	Lumens	Dynamic Feature	CRI	Beam	Control	Voltage <sup>1</sup>	Options	
							CP	ICAT
AX3 A New Const. Universal ADJ/DL/WW	10LM 1000 Lumens	WDTW WarmDim® (1800K-3000K) Tunable White (2000K-4350K)	90CRI	20D 20° beam 26D 26° beam 35D 35° beam	DMXR DMX, RDM Driver, 1% dim ZT 0-10V Dimming	120 277 MVOLT (120-277)	CP	Chicago Plenum
							ICAT	IC, Air-Tight

Trim Style	Reflector Finish	Flange Style / Finish	Ceiling Installation	
			SELF-FLANGED	FLANGELESS, WOOD/STONE/TILE <sup>2</sup>
3DH 3" Hyperbolic Downlight Trim	BS Black Specular	SELF FLANGED		
	CD Clear Diffuse	WHR White Trim Ring	Ceiling ≤ .875"	SFM3/087 (B,W) Ceiling ≤ .875"
	CS Clear Specular	SF Self Flanged (same finish as reflector)	Ceiling 0.875" - 1.25"	SFM3/125 (B,W) Ceiling 0.875" - 1.25"
	W White Paint	WHSF Self Flanged, White painted flange	Ceiling 1.25" - 1.625"	SFM3/163 (B,W) Ceiling 1.25" - 1.625"
	WTD Wheat Diffuse	FLANGELESS <sup>3</sup>		
		FM Flangeless		
			FLANGELESS, GYPSUM	
			FMA3/087 Ceiling ≤ .875"	
			FMA3/125 Ceiling 0.875" - 1.25"	
			FMA3/163 Ceiling 1.25" - 1.625"	

**Ordering Notes**

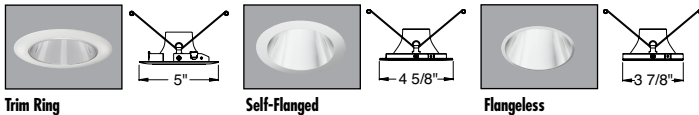
- <sup>1</sup> Specify MVOLT for ICAT fixtures. For non-ICAT, specify 120 or 277
- <sup>2</sup> Specify finish : B=Black, W=White
- <sup>3</sup> Flangeless trims must be used with Flangeless Adapter, ordered separately



**AX3 WDTW 3DH**  
**WARMDIM® & TUNABLE WHITE**  
**ADJUSTABLE/DOWNLIGHT/WALL WASH**  
**1000 LUMEN LED**  
 3" HYPERBOLIC DOWNLIGHT TRIM  
**AX3 WDTW with 3DH Trim**

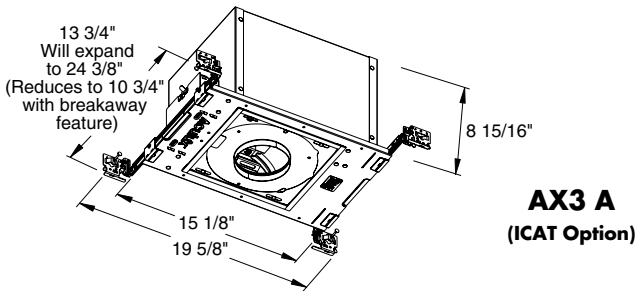
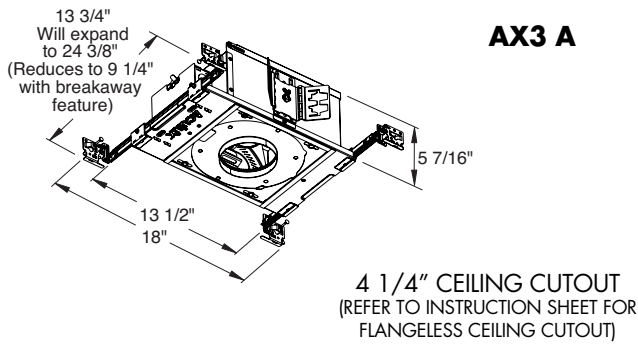
**TRIM SELECTION**

**3DH 3" Hyperbolic Downlight Trim**



**DIMENSIONS**

**NEW CONSTRUCTION**



**ELECTRICAL DATA**

Housing	AX3 A 10LM WDTW (ICAT option)		AX3 A 10LM WDTW	
Voltage	120	277	120	277
Input Power	18.9W	19.4W	20.9W	21.4W
Input Current	0.16	0.08	0.16	0.08
Frequency	50/60Hz		50/60Hz	
Power Factor	0.99	0.92	0.99	0.92

**ACCESSORIES**

Cat. #	Description
<b>3AXOPTW/20D</b>	20° Very Narrow Flood Optic
<b>3AXOPTW/26D</b>	26° Narrow Flood Optic
<b>3AXOPTW/35D</b>	35° Flood Optic
<b>AF3/10</b>	10° Film (Use with 26D Optic)
<b>AF3/20</b>	20° Film (Use with 26D Optic)
<b>AF3/30</b>	30° Film (Use with 26D Optic)
<b>AF3/40</b>	40° Film (Use with 26D Optic)
<b>AF3/50</b>	50° Film (Use with 26D Optic)
<b>AF3/60x1</b>	60°x1° Film (Use with 26D Optic)
<b>DIFF 200</b>	Diffuse Spread Lens
<b>SOLITE 200</b>	Uniformity Lens
<b>UVF 200</b>	UV Filter Lens
<b>PRISM 200</b>	Prismatic Lens
<b>LSPREAD 200</b>	Linear Spread Lens
<b>HCLBL 200</b>	Hexcell Louver
<b>HB1</b>	(2) Real Nail 3 Bar Hangers
<b>HB26</b>	(2) 26" C-Channel Bar Hangers
<b>HB50</b>	(2) 50" C-Channel Bar Hangers
<b>LB27</b>	(2) 27" Linear Bar Hangers
<b>EMI20</b>	20W Remote Mount Emergency Inverter

*To order, specify catalog number.*

**DIFFUSING FILMS**

To achieve the desired beam angle (FWHM), specify the following primary LED optic on the luminaire and order the diffusing film from the table below

Desired FWHM	Primary Optic	Film
20°	20D	-
26°	26D	-
30°	26D	<b>AF3/10</b>
35°	35D	-
40°	26D	<b>AF3/30</b>
45°	26D	<b>AF3/40</b>
55°	26D	<b>AF3/50</b>
55°x20°	26D	<b>AF3/60x1</b>

**AX3 WDTW 3DH**  
**WARMDIM® & TUNABLE WHITE**  
**ADJUSTABLE/DOWNLIGHT/WALL WASH**  
**1000 LUMEN LED**

3" HYPERBOLIC DOWNLIGHT TRIM

**AX3 WDTW with 3DH Trim**

**PHOTOMETRICS**

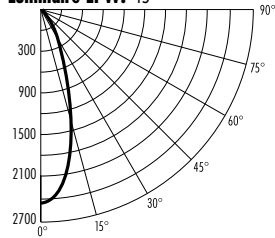
**FLOOD**

**PHOTOMETRIC REPORT**

Test Report #: PT10142907R  
 Catalog No: AX3 A 10LM WDTW 90CRI  
 35D ZT MVOLT 3DH CS WHR  
 (Aim at 0°)

Luminaire Spacing Criterion: 0.54

Luminaire LPW: 45



**CANDLEPOWER DISTRIBUTION (Candelas)**

Degrees	Vertical
0	2487
5	2311
15	1385
25	493
35	90
45	29
55	6
65	0
75	0
85	0
90	0

**AVERAGE INITIAL FOOTCANDLES**

Multiple Units (Square Array, 60"x60" room)  
 Ceiling 80% Wall 50% Floor 20%

Spacing	RCR1	RCR3	RCR5
4.0'	64	57	52
5.0'	41	37	33
6.0'	29	26	23
7.0'	23	21	19
8.0'	18	16	15
9.0'	14	13	11
10.0'	10	9	8

**INITIAL FOOTCANDLES**

(One Unit, 20.5W, 32.7° Beam)

Distance to Illuminated Plane (Feet)	Footcandles Beam Center	Beam Diameter
4	155.4	2.3'
6	69.1	3.5'
8	38.9	4.7'
10	24.9	5.9'

**LUMINANCE (Average cd/m²)**

Degrees	Average Luminance
45	7829
55	1885
65	44
75	0
85	0

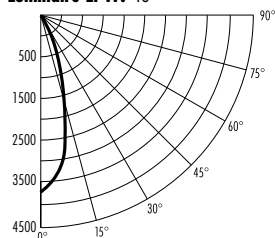
**NARROW FLOOD**

**PHOTOMETRIC REPORT**

Test Report #: PT10142904R  
 Catalog No: AX3 A 10LM WDTW 90CRI  
 26D ZT MVOLT 3DH CS WHR  
 (Aim at 0°)

Luminaire Spacing Criterion: 0.46

Luminaire LPW: 48



**CANDLEPOWER DISTRIBUTION (Candelas)**

Degrees	Vertical
0	3719
5	3413
15	1508
25	378
35	68
45	29
55	5
65	0
75	0
85	0
90	0

**AVERAGE INITIAL FOOTCANDLES**

Multiple Units (Square Array, 60"x60" room)  
 Ceiling 80% Wall 50% Floor 20%

Spacing	RCR1	RCR3	RCR5
4.0'	69	62	57
5.0'	44	40	37
6.0'	31	28	25
7.0'	25	22	21
8.0'	20	18	16
9.0'	15	14	12
10.0'	11	10	9

**INITIAL FOOTCANDLES**

(One Unit, 20.5W, 26.9° Beam)

Distance to Illuminated Plane (Feet)	Footcandles Beam Center	Beam Diameter
6	103.3	2.9'
8	58.1	3.8'
10	37.2	4.8'
12	25.8	5.7'

**LUMINANCE (Average cd/m²)**

Degrees	Average Luminance
45	7596
55	1790
65	44
75	0
85	0

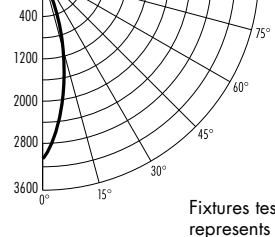
**VERY NARROW FLOOD**

**PHOTOMETRIC REPORT**

Test Report #: PT10142906R  
 Catalog No: AX3 A 10LM WDTW 90CRI  
 20D ZT MVOLT 3DH CS WHR  
 (Aim at 0°)

Luminaire Spacing Criterion: 0.38

Luminaire LPW: 36



**CANDLEPOWER DISTRIBUTION (Candelas)**

Degrees	Vertical
0	3109
5	2668
15	900
25	277
35	103
45	55
55	11
65	0
75	0
85	0
90	0

**AVERAGE INITIAL FOOTCANDLES**

Multiple Units (Square Array, 60"x60" room)  
 Ceiling 80% Wall 50% Floor 20%

Spacing	RCR1	RCR3	RCR5
4.0'	52	47	42
5.0'	33	30	27
6.0'	23	21	19
7.0'	19	17	15
8.0'	15	13	12
9.0'	11	10	9
10.0'	8	7	7

**INITIAL FOOTCANDLES**

(One Unit, 20.5W, 22.2° Beam)

Distance to Illuminated Plane (Feet)	Footcandles Beam Center	Beam Diameter
6	86.4	2.4'
8	48.6	3.1'
10	31.1	3.9'
12	21.6	4.7'

**LUMINANCE (Average cd/m²)**

Degrees	Average Luminance
45	14647
55	3643
65	87
75	0
85	0

Fixtures tested to IES recommended standard for solid state lighting per LM-79-08. Photometric performance on a single unit represents a baseline of performance for the fixture. Results may vary in the field. Photometry is at 3000K CCT.