



# 6" SUPER SLOPE CEILING LED - 1400 LUMENS IC NEW CONSTRUCTION HOUSING

Project: \_\_\_\_\_

Fixture Type: \_\_\_\_\_

Location: \_\_\_\_\_

Contact/Phone: \_\_\_\_\_

SUPER SLOPE:  
7/12 TO 12/12 PITCH (30° TO 45°)



**IC928LED (G4 14LM)  
OPEN TRIMS**

## PRODUCT DESCRIPTION

Dedicated LED, Air-Loc® sealed slope ceiling new construction housing with integral light engine • IC rated construction housing can be completely covered with insulation • Fully sealed housing stops infiltration and exfiltration of air, reducing heating and air cooling costs without the use of additional gaskets • LED housing is designed to provide 50,000 hours of life and is compatible with standard Juno trims • 5 year limited warranty on LED components.

## ENVIRONMENTALLY FRIENDLY, ENERGY EFFICIENT

- No harmful ultraviolet or infrared wavelengths
- No lead or mercury
- Comparable light output to 32W compact fluorescent

## PRODUCT SPECIFICATIONS

**LED Light Engine** Extruded heat sink and cast aluminum slider plate integrated directly with housing provides superior thermal management to ensure the long life of the LED • Replaceable light engine mounts directly to slider plate and incorporates the latest generation, high lumen output LED array • LEDs are binned within a 3-step MacAdam Ellipse

- 2700K, 3000K, 3500K, or 4000K color temperatures available
- 90 CRI minimum.

**Optical System** Computer-optimized internal reflector with specular finish coupled with a high transmission diffusing lens conceals the LEDs and produces uniform aperture luminance • Adjustable slider plate to position LEDs/reflector perpendicular to floor • Plate includes 1/4" adjustment indicators for consistent alignment.

**Aesthetic Trim Selections** Compatible with a selection of existing Juno trims • Shadow free, knife edge design blends seamlessly into ceiling.

**LED Driver** Choice of dedicated 120 volt (120) driver or universal voltage (MVOLT) drivers that accommodate input voltages from 120-277 volts AC at 50-60Hz • Power factor > 0.9 at 120V input • 120 volt only driver dimmable with the use of most incandescent, magnetic low voltage and electronic low voltage wall box dimmers • Universal voltage drivers are dimmable with the use of most 0-10V wall dimmers • For a list of compatible dimmers, see [JUNOICLED-DIM](#) • Mounted inside housing on a removable J-box cover for ease of maintenance.

**Life** Rated for 50,000 hours at 70% lumen maintenance.

**Labels** Certified to high efficacy requirements of California T24 JA8-2019 with select trims • UL listed for U.S. and Canada, through-branch wiring and damp locations • Union made • UL and cUL listed.

**Testing** All reports are based on published industry procedures; field performance may differ from laboratory performance.

Specifications subject to change without notice.

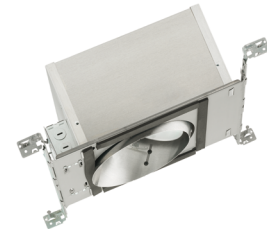
## HOUSING FEATURES

**Housing** Designed for use in IC (insulated ceiling) or non-IC construction • .032" aluminum housing sealed for Air-Loc compliance • Access door for junction box accessibility • Inner skirt is vertically adjustable to accommodate up to a 1" ceiling thickness.

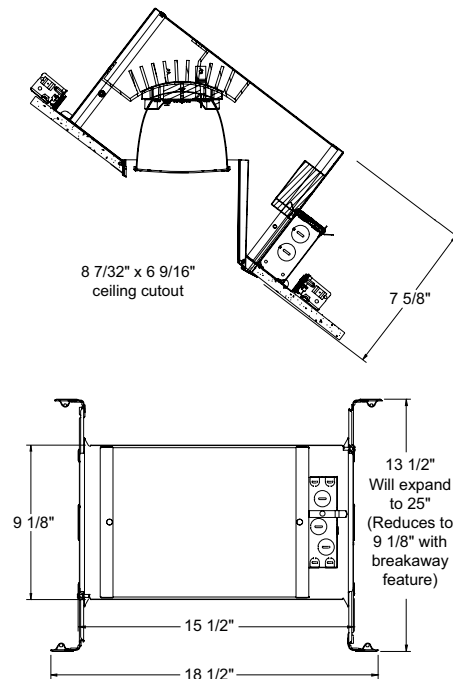
**Junction Box** Pre-wired junction box provided with (6) 1/2" and (1) 3/4" knockouts, (4) non-metallic sheathed cable connectors and ground wire, UL and cUL listed for through-branch wiring, maximum 8 #12 branch circuit conductors • Junction box provided with removable access plates • Knockouts equipped with pryout slots • Push-in electrical connectors supplied as standard for fast, secure installation.

**Mounting Frame** 22-gauge die-formed galvanized steel mounting frame • Rough-in section (junction box, mounting frame, housing and bar hangers) fully assembled for ease of installation.

**Real Nail® 3 Bar Hangers** Patented (US Patent D552,969) Real Nail® 3 bar hangers: telescoping system permits quick placement of housing anywhere within 24" O.C. joists or suspended ceilings • Includes removable nail for repositioning of fixture in wood joist construction • Integral T-bar mounting feature for suspended ceilings.



## DIMENSIONS



# 6" SUPER SLOPE CEILING LED - 1400 LUMENS IC NEW CONSTRUCTION HOUSING

SUPER SLOPE: 7/12 TO 12/12 PITCH (30° TO 45°)

## IC928LED (G4 14LM) OPEN TRIMS

### ELECTRICAL DATA

Dedicated 120V Only Driver Option (120 FRPC)

| 120V                  |  |
|-----------------------|--|
| Input Power           | 17.4W (+/-5%)                                    |
| Input Current         | 0.15A  |
| Frequency             | 50/60Hz  |
| EMI/RFI               | FCC Title 47 CFR, Part 15, Class B (residential) |
| Minimum starting temp | -25°C  |

### ELECTRICAL DATA

Universal Voltage

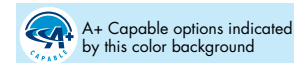
|                       | MVOLT EZ10 and MVOLT EZ1                         |  | MVOLT ZT10 and MVOLT ZT1                         |  |
|-----------------------|--|--|--|--|
|                       | 120V   | 277V   | 120V   | 277V   |
| Input Power           | 15.6W (+/-5%)                                    | 16.3W (+/-5%)                                    | 15.6W (+/-5%)                                    | 16.3W (+/-5%)                                    |
| Input Current         | 0.13A  | 0.06A  | 0.13A  | 0.06A  |
| Frequency             | 50/60Hz  | 50/60Hz  | 50/60Hz  | 50/60Hz  |
| EMI/RFI               | FCC Title 47 CFR, Part 15, Class B (residential) | FCC Title 47 CFR, Part 15, Class B (residential) | FCC Title 47 CFR, Part 15, Class B (residential) | FCC Title 47 CFR, Part 15, Class B (residential) |
| Minimum starting temp | -20°C  | -20°C  | -20°C  | -20°C  |

### ORDERING INFORMATION

Housing and trim can be ordered together or separate, but will always ship separately.

Example: IC928LED G4 14LM 35K 90CRI 120 FRPC

| Series   | Generation         | Lumens                      | Color Temperature | CRI              | Voltage/Driver   |
|--|--------------------|-----------------------------|-------------------|------------------|--|
| IC928LED<br>6" LED Super Slope Ceiling New Construction IC Hsg | G4<br>Generation 4 | 14LM<br>1400 Nominal Lumens | 27K<br>2700K      | 90CRI<br>90+ CRI | 120 FRPC<br>120V Forward/Reverse Phase Cut, 5% dim         |
|  |                    |                             | 30K<br>3000K      |                  | MVOLT ZT10<br>Multi-Volt (120-277), 0-10V, 10% dim         |
|  |                    |                             | 35K<br>3500K      |                  | MVOLT ZT1<br>Multi-Volt (120-277), 0-10V, 1% dim           |
|  |                    |                             | 40K<br>4000K      |                  | MVOLT EZ10<br>Multi-Volt (120-277), eLdoLED 0-10V, 10% dim |
|  |                    |                             |                   |                  | MVOLT EZ1<br>Multi-Volt (120-277), eLdoLED 0-10V, 1% dim   |



### Trim/Description



- 604 BBRZ<sup>1</sup> 6" Super Slope Downlight Baffle Trim - Black Baffle, Bronze Trim Ring
- 604 BBL<sup>1</sup> 6" Super Slope Downlight Baffle Trim - Black Baffle, Black Trim Ring
- 604 BSC<sup>1</sup> 6" Super Slope Downlight Baffle Trim - Black Baffle, Satin Chrome Trim Ring
- 604 BWH<sup>1</sup> 6" Super Slope Downlight Baffle Trim - Black Baffle, White Trim Ring
- 604 WWH 6" Super Slope Downlight Baffle Trim - White Baffle, White Trim Ring



- 602 BWH<sup>1</sup> 6" Super Slope Downlight Cone Trim - Black Cone, White Trim Ring
- 602 CWH 6" Super Slope Downlight Cone Trim - Clear Alzak® Cone, White Trim Ring
- 602 GWH 6" Super Slope Downlight Cone Trim - Gold Cone, White Trim Ring
- 602 HZSC 6" Super Slope Downlight Cone Trim - Haze Cone, Satin Chrome Trim Ring
- 602 HZWH 6" Super Slope Downlight Cone Trim - Haze Cone, White Trim Ring
- 602 WHZBRZ 6" Super Slope Downlight Cone Trim - Wheat Haze Cone, Bronze Trim Ring
- 602 WHZWH 6" Super Slope Downlight Cone Trim - Wheat Haze Cone, White Trim Ring
- 602 WWH 6" Super Slope Downlight Cone Trim - White Cone, White Trim Ring

Trim Size: 602 and 604 - 9 3/16" x 8 3/16" O.D.

Alzak is a registered trademark of Alcoa Corp.

Note: In Canada when insulation is present, Type IC fixtures must be used.

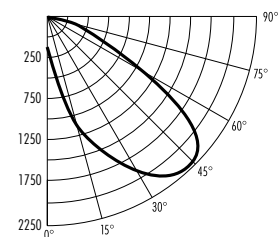
### PHOTOMETRIC REPORT

Test Report #: PT10141701R

Catalog No: IC928LED G4 14LM 35K 90CRI  
120 with 604 WWH Trim

Luminaire Spacing Criterion: 3.66

Luminaire LPW: 85



### CANDLEPOWER DISTRIBUTION (Candelas)

| Degrees Vertical | 0°   |
|------------------|------|
| 0                | 232  |
| 5                | 413  |
| 10               | 751  |
| 15               | 1153 |
| 20               | 1474 |
| 25               | 1729 |
| 30               | 1980 |
| 35               | 2182 |
| 40               | 2278 |
| 45               | 2245 |
| 50               | 2030 |
| 55               | 1630 |
| 60               | 1140 |
| 65               | 777  |
| 70               | 374  |
| 75               | 122  |
| 80               | 19   |
| 85               | 3    |
| 90               | 0    |

### AVERAGE INITIAL FOOTCANDLES

Multiple Units (Square Array, 60' x 60' room)

Ceiling 80% Wall 50% Floor 20%

| Spacing | RCR1 | RCR3 | RCR5 |
|---------|------|------|------|
| 4.0'    | 98   | 76   | 60   |
| 5.0'    | 63   | 49   | 39   |
| 6.0'    | 44   | 34   | 27   |
| 7.0'    | 35   | 27   | 22   |
| 8.0'    | 28   | 22   | 17   |
| 9.0'    | 21   | 17   | 13   |
| 10.0'   | 16   | 12   | 10   |

### INITIAL FOOTCANDLES

(One Unit, 17.4W, 45.9° Beam)

| Distance to Illuminated Plane (Feet) | Footcandles Beam Center | Beam Diameter |
|--------------------------------------|-------------------------|---------------|
| 4                                    | 142.4                   | 3.4'          |
| 6                                    | 63.3                    | 5.1'          |
| 8                                    | 35.6                    | 6.8'          |
| 10                                   | 22.8                    | 8.5'          |

### LUMINANCE (Average cd/m<sup>2</sup>)

| Degrees | Average Luminance |
|---------|-------------------|
| 45      | 188700            |
| 55      | 168926            |
| 65      | 109302            |
| 75      | 27915             |
| 85      | 2127              |

### ZONAL LUMEN SUMMARY

| Zone  | Lumens | %Lamp | %Fixture |
|-------|--------|-------|----------|
| 0-30° | 376    | N/A   | 25.3     |
| 0-40° | 705    | N/A   | 47.5     |
| 0-60° | 1311   | N/A   | 88.2     |
| 0-90° | 1486   | N/A   | 100.0    |