



# TRAC-LITES

## 120V PAR16/MR16 GU10 SERIES

R711, R712, R714, R715  
R717 and R718



Project: \_\_\_\_\_

Fixture Type: \_\_\_\_\_

Location: \_\_\_\_\_

Contact/Phone: \_\_\_\_\_

### PRODUCT DESCRIPTION

**Lampholder** Ceramic base twist-and-lock GU10 socket with nickel plated contacts.

**Aiming** 90° vertical aiming capability and 358° rotation.

**Adapter** Copper alloy contacts provide precise spring action • True, positive electrical ground • On/off switch included • Patented embossed polarity arrows on bottom of adapter • Spring-loaded locking latch with embossed polarity arrows secures track light to track • Compatible with both Trac-Lites and Trac-Master track • “Pull-up” contact to up position for use on Trac-Master two-circuit track.

#### Government Procurement

BAA – Buy America(n) Act: Product qualifies as a domestic end product under the Buy American Act as implemented in the FAR and DFARS. Product also qualifies as manufactured in the United States under DOT Buy America regulations.

BABA – Build America Buy America: Product qualifies as produced in the United States under the definitions of the Build America, Buy America Act.

Please refer to [www.acuitybrands.com/buy-american](http://www.acuitybrands.com/buy-american) for additional information.

**Labels** UL/CUL listed.

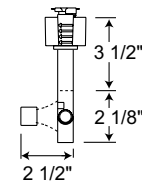
**Note:** Actual performance may differ as a result of end-user environment and application. Specifications subject to change without notice.



### Line Voltage GU10 Open Back Spotlight

**Construction** Drawn steel housing with die-formed steel yoke.

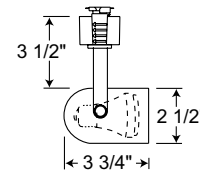
Catalog Number	Finish	Lamp
R711 WH	White	120V, 35-50W PAR16/MR16 GU10
R711 BL	Black	120V, 35-50W PAR16/MR16 GU10



### Line Voltage GU10 Round Back Cylinder

**Construction** Drawn steel housing with die-formed steel yoke.

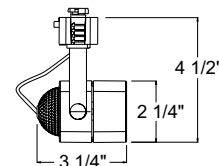
Catalog Number	Finish	Lamp
R712 BL	Black with Black Bezel	120V, 35-50W PAR16/MR16 GU10



### Line Voltage GU10 Cast Cube

**Construction** Drawn steel housing with die-formed steel yoke.

Catalog Number	Finish	Lamp
R714 WH	White	120V, 35-50W PAR16/MR16 GU10
R714 BL	Black	120V, 35-50W PAR16/MR16 GU10
R714 SC	Satin Chrome	120V, 35-50W PAR16/MR16 GU10
R714 BZ	Painted Bronze	120V, 35-50W PAR16/MR16 GU10



# TRAC-LITES

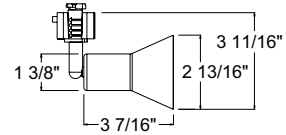
## 120V PAR16/MR16 GU10 SERIES

### R711, R712, R714, R715 R717 and R718

#### Line Voltage GU10 Flare

**Construction** Drawn steel housing with machined steel stem.

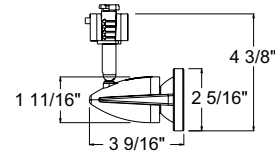
Catalog Number	Finish	Lamp
R715 WH	White	120V, 35-50W PAR16/MR16 GU10
R715 BL	Black	120V, 35-50W PAR16/MR16 GU10
R715 SC	Satin Chrome	120V, 35-50W PAR16/MR16 GU10
R715 BZ	Painted Bronze	120V, 35-50W PAR16/MR16 GU10



#### Line Voltage GU10 Odyssey

**Construction** Die cast aluminum housing with machined steel stem.

Catalog Number	Finish	Lamp
R717 WH	White	120V, 35-50W PAR16/MR16 GU10
R717 SC	Satin Chrome	120V, 35-50W PAR16/MR16 GU10



#### Line Voltage GU10 Bell

**Construction** Die cast aluminum housing and swivel arm • Deep lamp regression and spun aluminum step baffle to reduce glare.

Catalog Number	Finish	Lamp
R718 BZ	Oil Bronze	120V, 35-50W PAR16/MR16 GU10

