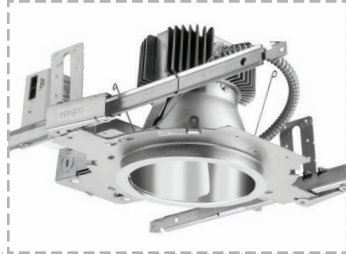
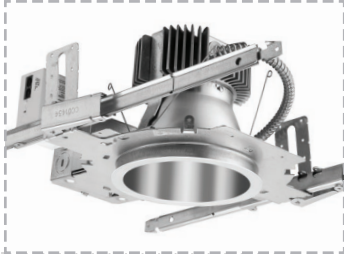


EVO® OPEN LED DOWNLIGHT & WALLWASH



Left: Evo open downlight (series: EVO) lm/W: 84.1 / Right: Evo open wallwash (series: EVO WW) lm/W: 80



This application is ideally suited for Evo.

Look ahead. As with every Evo® luminaire, the open downlight has been designed to evolve as solid-state technology evolves, without compromising the quality of light. Delivered lumens, CCT and beam distribution—all of these will remain precisely as specified, even if the luminaire incorporates upgraded LED technology.

Used in combination with the open downlight, the open wallwash gives you the ability to illuminate vertical surfaces while maintaining a consistent visual rhythm in the ceiling.

- Outstanding delivered lumens at minimal wattage consumption leads to higher efficacies, lower power density and luminaire count reductions compared to CFL and other LED downlights
- Patented Bounding Ray™ optics balance efficacy with aperture aesthetics
- Evo solid-state luminaires tested to LM-79-08 standards and the open downlight is ENERGY STAR® certified — Evo LEDs tested to LM-80 standards

Evo Distributions



EVO®. FUTURE READY.

Evo is a family platform specifically designed to allow for the integration of advances in solid-state technology. Leveraging a modular design allows Gotham to reconfigure the mixing chamber, reflector, lenses, drivers and LEDs independently of one another, creating enormous flexibility to upgrade efficiency and efficacy as technology advances. Here's how we make it possible:



Evo's configurable light engine.

- 1 REMOVING HEAT /** Evo's thermal design ensures that LED temperatures remain below the thermal limit. Enhanced color stability is a direct result, along with better fixture-to-fixture consistency and longer LED life.
- 2 PROVIDING LIGHT /** LED boards in all Evo luminaires are configurable and replaceable, enabling us to upgrade to higher-efficiency systems as technology advances. The LEDs are binned to a 2.5-step MacAdam's ellipse to achieve consistent color from luminaire to luminaire.
- 3 BLENDING LIGHT /** Evo mixing chamber optics are built using 98.5% reflective material, and shaped to eliminate color separation and pixilation to produce smooth, pleasing light.
- 4 FOCUSING LIGHT /** A lens composed of 92% transmissive holographic film forms the heart of Evo's modular design. This is the final step in a process to collimate light, and create a luminaire with optimal distribution.
- 5 CONTROLLING LIGHT /** With eldoLED drivers dimming to 1% or <1% via 0-10V, DALI or DMX/RDM and nLight by Acuity Controls, EVO delivers premium dimming and networkable control solutions.

EVO OPEN LED DOWNLIGHT & WALLWASH

series		type		color temperature		nominal lumen output		aperture		trim color		distribution ⁴	
REQUIRED												OPTIONAL	
EVO				30/20				6AR					
EVO ¹	blank	downlight	27/	2700K	07	750 lumens	4	AR	clear	VND	very narrow		
	WW	wallwash	30/	3000K	10	1000 lumens	6	PR	pewter	ND	narrow		
			35/	3500K	15	1500 lumens	8	WTR	wheat	MD	medium		
			40/	4000K	20	2000 lumens		GR	gold	MWD	medium wide		
					25	2500 lumens		WR	white	WD	wide		
					30	3000 lumens		BR	black				
					35	3500 lumens		WRAMF	white anti-microbial				
					40	4000 lumens							
					45	4500 lumens							

finish		voltage		driver		options	
OPTIONAL		REQUIRED		OPTIONAL		OPTIONAL	
LD		120		EZ1			
LSS	semi-specular	MVOLT		EZ1	eldoLED 1% 0-10V	SF	Single Fuse
LD	matte-diffuse	120		EZB	eldoLED <1% 0-10V	TRW	White painted flange
LS	specular	277		EDAB	eldoLED <1% DALI	TRBL	Black painted flange
		347		EDXB	eldoLED <1% DMX/RDM	ELR	Battery pack (remote)
				EXA1	XPoint Wireless, eldoLED 1% dimming. Only available for 0-10V	EL	Battery pack
				EXAB	XPoint Wireless, eldoLED <1% dimming	NPS80 EZ	nLight® dimming pack controls 0-10V eldoLED drivers
				ECOS2	Lutron ECOS 2-wire	NPS80 EZ ER	nLight® dimming pack controls 0-10V eldoLED drivers. ER controls fixtures on emergency circuit.
				ECOS3	Lutron ECOS 3-wire	CRI90	High CRI (90+)
						BGTD	Bodine Generator Transfer Device
						RRL	RELOC Ready
						CP	Chicago Plenum
						WRS	FIDO wireless reporting system

notes:
¹ Please consult www.gothamlighting.com for full specification details and notes