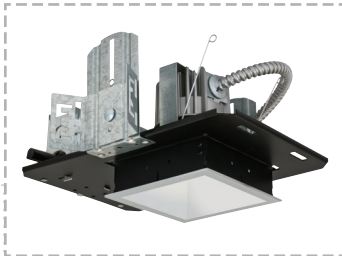


EVO[®] LED S Q U A R E D O W N L I G H T



Evo open square LED (series: EVO SQ) / lm/W: 92.3 (2000lm)



This application is ideally suited for Evo squares.

■ The circle in the square. The heart of the Evo[®] square is a sophisticated azimuthal reflector. At one end is Evo's high-performance, solid-state light engine, at the other a square flange. The precise transition between the two yields a luminaire with vanguard performance simply impossible to duplicate using standard square reflectors.

■ Innovative azimuthal reflector is miter-free, one-piece, polymer composite and will not distort or separate — no racking, no light leaks

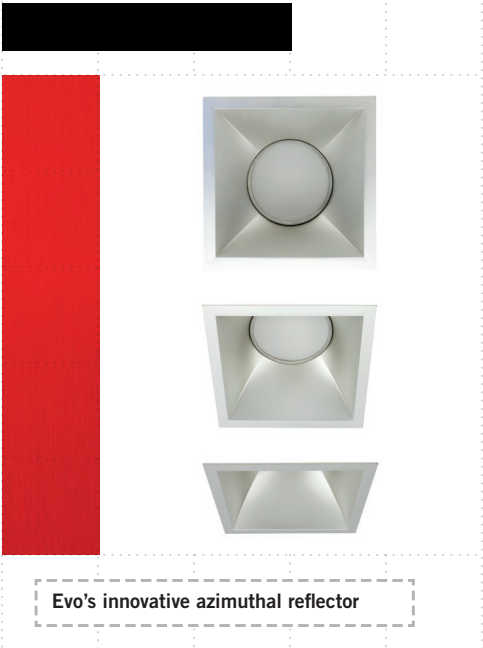
- Keyed reflector positioning keeps the light engine and reflector aligned and locked in position — adjustable frame allows up to 5° of rotation after installation
- Exceptional performance and modular design — like every Evo luminaire, Evo squares boast configurable LED boards, 2.5-step MacAdam's ellipse binning, and exceptional efficacy

Evo Distributions



EVO. SQUARE MEANS SQUARE

Gotham® has created an Evo luminaire that combines the aesthetic attributes of the square, with exceptional performance that rivals Evo round. Plus, there are all the benefits of advanced solid-state technology — efficiency, control, energy savings.



Evo's innovative azimuthal reflector

- 1 PERFECT ALIGNMENT** / Evo's adjustable frame allows rotation of the light engine and reflector up to 5 degrees after the frame is installed. Alignment becomes a very simple task. Evo squares also feature keyed reflector positioning — the reflector is secured to the frame with a precise tab and slot system.
- 2 MITER-FREE CONSTRUCTION** / Most square luminaires use mitered corners, which are subject to racking, distortion, and light leaks. Evo squares feature miter-free, one-piece polymer composite reflectors that maintain their integrity and performance: Square now, square later.
- 3 AZIMUTHAL DESIGN** / Using advanced mathematics and manufacturing, Gotham's design team has created a unique one-piece reflector. A circular profile adjacent to the light engine transforms seamlessly into a square at the flange — resulting in optics that outperform any standard square luminaire.
- 4 EVO MODULARITY** / And of course, Evo squares provide the future-ready modular design benefits inherent in every Evo luminaire: configurable and upgradable LED boards.
- 5 CONTROLLING LIGHT** / With eldoLED drivers dimming to 1% or <1% via 0-10V, DALI or DMX/RDM and nLight by Acuity Controls, EVO delivers premium dimming and networkable control solutions.

EVO SQUARE

series	type	color temperature	nominal lumen output	aperture	trim color	finish
REQUIRED		REQUIRED				
EVO			30/20	6AR		LD
EVO ¹	SQ square downlight	27/ 2700K 30/ 3000K 35/ 3500K 40/ 4000K	07 750 lumens 10 1000 lumens 15 1500 lumens 20 2000 lumens 25 2500 lumens 30 3000 lumens 35 3500 lumens 40 4000 lumens 45 4500 lumens	4 6	AR clear PR pewter WTR wheat WR white BR black	LSS semi-specular LD matte-diffuse

voltage	driver	options
REQUIRED		OPTIONAL
120	EZ1	
MVOLT	EZ1 eldoLED 1% 0-10V	SF Single Fuse
120	EZB eldoLED <1% 0-10V	ELR Batterypack (remote)
277	EDAB eldoLED <1% DALI	EL Batterypack
347	EDXB eldoLED <1% DMX/RDM	NPS80 EZ nLight® dimming pack controls 0-10V eldoLED drivers
	EXA1 XPoint Wireless, eldoLED 1% dimming. Only available for 0-10V	NPS80 EZ ER nLight® dimming pack controls 0-10V eldoLED drivers. ER controls fixtures on emergency circuit.
	EXAB XPoint Wireless, eldoLED <1% dimming	CR190 High CRI (90+)
	ECOS2 Lutron ECOS 2-wire	BGTD Bodine Generator Transfer Device
	ECOS3 Lutron ECOS 3-wire	RRL RELOC Ready
		CP Chicago Plenum
		WRS FIDO wireless reporting system

notes:
¹ Please consult www.gothamlighting.com for full specification details and notes