



Multi-head LED Luminaires

High performance
LED accent lighting



Multi-Head LED Luminaires

Attractive, versatile and ultra-efficient

Quality, flexibility, and good looks have endeared Indy Multi-Head Luminaires to retailers, designers, and installers alike. Now there's yet another reason to love these fixtures ... the energy and operational efficiencies of LED illumination.

Available in two distinctive designs – Multi-Spot® and Designer Cove™ – these fixtures feature one, two or three LED luminaire heads, each capable of delivering up to 3000 lumens. Depending on color temperature specified, total fixture output can be as much as 9,000 lumens. The luminaire heads are fully adjustable, making them ideal for accent or ambient lighting in a broad range of applications. And the fixtures are recessed into the ceiling for a clean, uncluttered appearance.

Indy multiples have coordinated optics and LEDs to match the Juno Trac offering.





Offering innovative solutions

SpectralWhite Color Rendering

Do your retail or commercial spaces demand superb color rendering, as well as possess a lot of whites that need to pop as much as the colors? Acuity Brand's new Color/White Enhancing Option (SW Option) offers a solution to this situation, rendering richer, more vibrant colors and making whites appear naturally brilliant and vivid. This is achieved using LEDs which employ a custom phosphor, formulated to adjust the spectrum of light emitted by the LED to produce radiant whites while maintaining high efficacy and high color rendering. The resulting light is more balanced than typical 80 CRI or 90 CRI LEDs, enabling colors to be rendered well while also enhancing whites.

Saving Energy, Saving Money

With an expected service life of 50,000 hours, Indy Multi-Head LED luminaires reduce operating costs by providing 10 or more years of maintenance-free operation in typical retail installations. And with power consumption approximately 80% less than equivalent halogen, the energy savings are substantial. See page 9 for a performance and cost comparison.



Refer to the Energy Star website for a list of qualified Indy multi-head products.

Two fixture designs ... a world of possibilities

Indy Multi-Head LED Luminaires are available in two high-quality designs that offer a wealth of flexibility and performance.

Designer Cove or Multi-Spot . . . both offer the dependable construction that Indy is famous for. The housings are made of heavy-gauge steel, powder-coated in white or black. The durable luminaire heads include die-cast aluminum lens holders with white or black finishes to match the housing, with an optional snoot and lens accessories. Cool operating LEDs allow luminaires to be “hot” aimed with bare hands and no tools. All components are designed and engineered in the USA to the highest standards and are backed by a five-year warranty.



Designer Cove™ LED

Series: DCS30

Designer Cove fixtures are available with one, two or three LED luminaire heads. Featuring an open housing design and fully adjustable yoke assembly, each luminaire can be rotated 360°, tilted up to 75° and locked into place. Vertical adjustment via the extendable yoke allows luminaires to be lowered 2" providing even greater aiming flexibility. All housings are provided with a white trim flange.



Multi-Spot® LED

Series: MSS30

Multi-Spot fixtures feature an attractive closed-pan trim with optional snoots for improved shielding. One, two or three LED luminaire heads can be specified, each capable of 360° rotation and up to 40° tilt. All housings include a white trim flange.



Multi-Spot® LED Retrofit Kit

Series: MSSRT30

The Indy Multi-Spot LED Retrofit Kit allows you to easily convert your existing Indy CMH/HID and early generation LED Multi-Spot luminaires to the latest and most advanced technology. Up to three 1000, 2000 or 3000 lumen LED luminaire heads can be specified to retrofit existing rough-in installations.

Kit contents include:

- A. Driver plate with pre-wired drivers
- B. (2) access doors; one for 120V and one for 277V
- C. (1), (2) or (3) complete LED heads
- D. Wire assemblies with quick connects



A. Multi-Spot LED:

Attractive closed-pan trim. One, two or three LED heads can be specified, each capable of 360° rotation and up to 40° tilt. Ideal for accent or ambient lighting in a broad range of retail applications.

B. Designer Cove LED:

Available with one, two or three LED heads. The open housing design allows the luminaires to be rotated 360°. Extendable yoke features 2" vertical adjustment allowing head to extend below ceiling and tilt up to 75°. Ideal for accent or ambient lighting in a broad range of applications.

C. Quality LEDs (PAR30-Style Heads):

Advanced technology, LED heads produce up to 3,074 lumens* of consistent, bright-white light from only 34-watts input. Available in color temperatures of 2700K, 3000K, 3500K and 4000K with 80 CRI minimum & 90 CRI and 97 CRI or SpectralWhite options. LED color mix and 3-step MacAdam Ellipse assures consistent bright-white light from each luminaire.

D. Reflectors:

Available in spot, narrow flood and flood beam spreads; field-replaceable if lighting needs change.

E. Lens Holder:

Ideal for accent or ambient lighting in a broad range of retail applications. Die-cast aluminum lens holder can accommodate a variety of light control accessories (see specification sheet).

F. Driver:

120/277V LED driver. Dimmable via 0-10V controller or nLight®. For a list of compatible dimmers see Specification Sheet.

G. Heat Sink:

Super-efficient, assures service life of 50,000 hours or more.

H. Construction:

Constructed of heavy-gauge steel, powder-coated in white or black.

I. LED Heads:

Removable / replaceable for changing color temperature, beam spread, or upgrading to new technology.

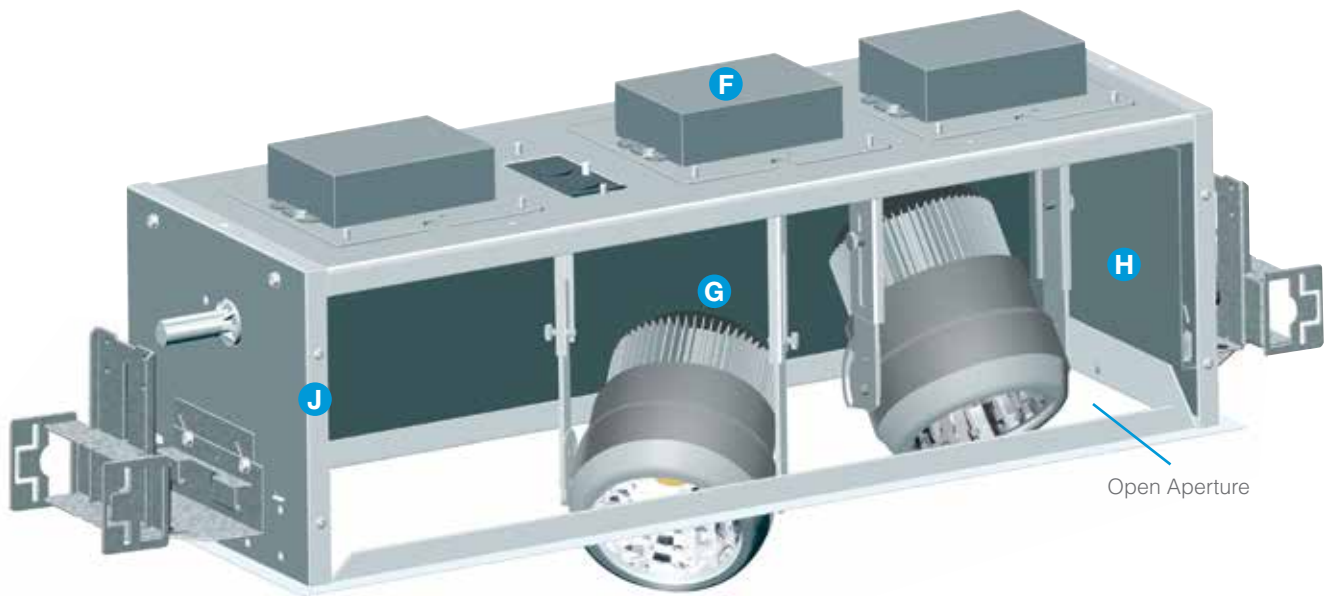
J. Rotation and Tilt Lock:

Vertical adjustment for up to 75° aiming.

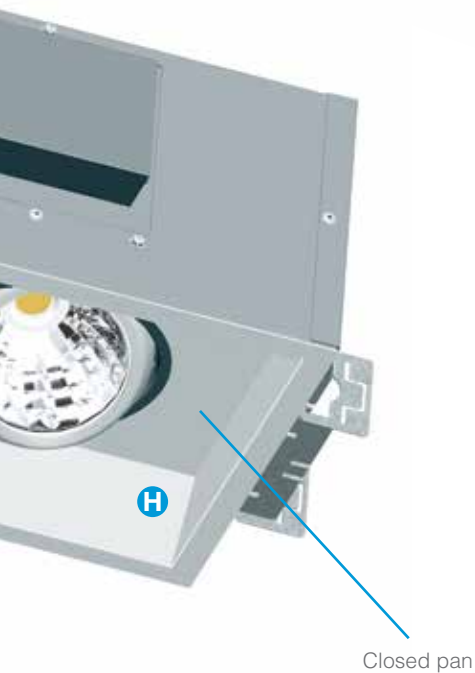
A Multi-Spot LED



* Dependent on color temperature.



B Designer Cove LED



**High performance accent
lighting with LED efficiency**



Total fixture output can be as much as 9,000 lumens with up to 80% energy savings.

Brilliant Retail Illumination

Indy Multi-Head LED Luminaires offer unsurpassed performance and operating efficiencies. Each PAR30-style head incorporates advanced LED technology and produces up to 3,000 lumens of consistent, bright-white light from only 34-watts input or 1,000 lumens from only 13-watts input. That's illumination exceeding 39W PAR30 metal halide respectively . . . but at an energy savings of up to 80%.

Indy Multi-Head LED Luminaires are offered in three beam-spreads providing maximum versatility and spectacular performance:

34W Indy One-Head LED Luminaire 39W PAR30 Metal Halide Equivalent	13W Indy One-Head LED Luminaire 75W PAR30 Halogen Equivalent
10° Spot with 38,727 CBCP	10° Spot with 11,655 CBCP
23° Narrow Flood with 16,118 CBCP	23° Narrow Flood with 5,158 CBCP
42° Flood with 5,995 CBCP	42° Flood with 2,134 CBCP

CBCP = Center Beam Candlepower

Careful attention to the LED color mix and tight ANSI-standard binning assures consistent bright-white light from each LED head, and from fixture-to-fixture. Luminaire beam-spread is soft, gradual, and uniform with 80 CRI minimum or optional 90 and 97 CRI or SpectralWhite, and color temperatures of 2700K, 3000K, 3500K and 4000K. Indy Multi-Head LED Luminaires are the perfect lighting solution in a wide variety of commercial and retail settings. Dimmable via 0-10V controller or nLight®. nLight is a networked digital control system that provides both energy savings and increased user configurability by cost effectively integrating time-based, daylight-based, sensor-based and manual lighting control schemes. For a list of compatible dimmers see Specification Sheet.

The simple solution to accent lighting

While Indy Multi-Head LED Luminaires provide exceptional illumination and economy, they also fit nicely into virtually any environment that requires accent lighting. Indy Multi-Head LED Luminaires are typically supplied complete, with housing and luminaire heads ready for installation. However, housings and luminaires can also be ordered separately, if desired, so that housings can be roughed-in during ceiling installation. Once construction is completed, the luminaire heads can then be shipped and installed separately,

keeping them clean and protected from potential damage.

The universal housing design installs quickly and easily in suspended grid, plaster or drywall ceilings. Mounting brackets have 3" vertical adjustment. For non-accessible ceilings, units can be specified with C-channel mounting bars. Light engines and drivers are easily accessed from above or below the ceiling to accommodate future technology upgrades.



Industry-leading efficiency and performance

Indy Multi-Head LED Luminaires offer dramatic energy savings and operational efficiencies when compared to equivalent halogen or metal halide products and provide outstanding color rendering and illumination performance. See the chart below for all the exciting facts.

Performance and Cost Comparison Over 50,000 Hour Fixture Life					
26W, 3K Indy LED Multi-Spot, 1-Head, PAR30 Size Luminaire Narrow Flood 23°	13W, 3K Indy LED Multi-Spot, 1-Head, PAR30 Size Luminaire Narrow Flood 23°		39W PAR30 HID Narrow Flood 25°	75W PAR30 Halogen Narrow Flood 25°	50W MR16 Halogen Narrow Flood 25°
24.9	12.5	Watts per Fixture Head	46	75	50
1925	1000	Lumens per Fixture Head****	1560	1130	750
10,155	5,158	Center Beam Candlepower****	7,150	4,000	2,800
77	80	Efficacy (Lumens/Watt)	34	15	15
3000K	3000K	Color Temperature	3000K	2900K	3050K
50,000	50,000	Rated Life (Hours)*	10,000	2,500	6,000
Operating Cost Summary					
\$124.50	\$62.50	Total Energy Cost per Fixture Head**	\$230.00	\$375.00	\$250.00
\$0.00	\$0.00	Maintenance Cost per Fixture Head***	\$508.50	\$485.20	\$216.42
\$124.00	\$62.50	Total Operating Costs	\$738.50	\$860.20	\$466.42
\$614.00	\$797.70	Total Savings per Fixture Head			

* Halogen rated life is based on 50% lamp failure; LED rated life is based on 0% failure with 70% lumen maintenance.

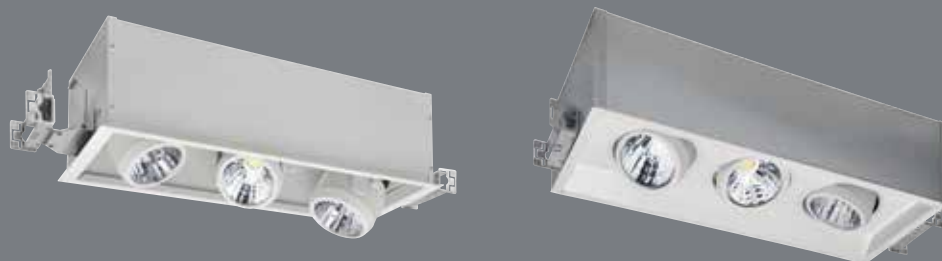
** Based on electricity costs of \$0.10 per kilowatt hour.

*** Replacement Cost per lamp + Replacement Labor Cost x Number of Lamp Changes Over 50,000 Hours.

**** HID listed in mean lumens and CBCP.

Indy Multi-Head LED Luminaires

Commercial-grade luminaires that produce brilliant illumination and accent lighting.



Designer Cove™ (DCS30) and Multi-Spot® (MSS30) PAR30 Size †

1,000 lumen – 13-Watts per Head
2,000 lumen – 26-Watts per Head
3,000 lumen – 34-Watts per Head

1,000 lumen – Up to 1038 Lumens* per Head
2,000 lumen – Up to 1958 Lumens* per Head
3,000 lumen – Up to 3074 Lumens* per Head

Available with One, Two or Three Heads

Three Beam Spreads: 10° Spot,
23° Narrow Flood, 42° Flood

Four Color Temperatures:
2700K, 3000K, 3500K and 4000K

0-10V Dimming or nLight®

Five Year Warranty

† Energy Star® Certified products available. See specification sheets for details.

* Dependent on color temperature.

Photo Credits:

Front Cover: Verizon Store, Chicago, IL (Amy Laughead-Riese, Lighting Designer, Mark Steele Photography)

Pages 1: Georgia Aquarium Gift Shop, Atlanta, GA (Doug Salin Photography)

Page 3: Prince George's County Memorial Library, Maryland (Gant Brunett Architects/Karl Connelly Photography)

Page 6: Toronto Maple Leafs Store, Air Canada Centre, Toronto, Canada (Paul Nieboer Lighting, Designer, David Whittaker Photography)

Page 8: Blackberry Retail Store (Mark Steele Photography)



©2017 Acuity Brands Lighting, Inc. The marks appearing in this catalog are trademarks of Acuity Brands Lighting, Inc. Products shown in this brochure may be covered by U.S. and international patents and patents pending. Specifications subject to change without notice. Printed in the U.S.A.