

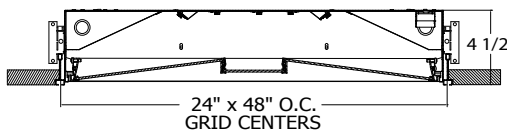
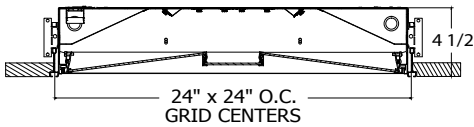
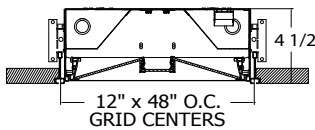
WHISPER

LUMINOUS CENTER
TUNABLE WHITE
DC2DC ARCHITECTURE

HIGHLIGHTS

- Compatible with DC2DC architecture
- Multiple lumen packages available
- Up to 134 lumens per watt (LPW)
- Available in Rhythm range
- 1X4, 2X2 and 2X4 sizes available
- Declare Listed

DIMENSIONS



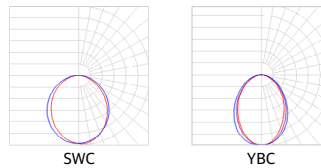
FIXTURE PERFORMANCE

Size	Nominal Lumens	Delivered Lumens*	DC Input Watts**	LPW	# Device Addresses
1x4 LCTR	2000LM	2063	18	115	1
	3300LM	3028	26	117	1
	4000LM	3867	35	111	1
	4800LM	4526	43	105	1
2X2 LCTR	2000LM	1935	17	118	1
	3300LM	3027	26	117	1
	4000LM	3596	33	112	1
	5000LM	5130	49	106	1
	HE6000LM	6112	52	118	1
2X4 LCTR	3000LM	2958	23	134	1
	4000LM	3950	32	127	1
	4800LM	4650	39	121	1
	HE7200LM	7208	60	120	2
	HE9600LM	9632	85 (2)***	113	2
	HE12000LM	11845	110 (2)***	108	2

*Based on WHSPR LCTR TUWH RHYR 90CRI @40K with SWC center shielding
 **Standard photometry based on AC wattage, DC Wattage = AC wattage * .93
 ***Fixtures that exceed 80W have qty of inputs noted in parentheses. Wattage on each input are equal: divide fixture input wattage shown by number of inputs to determine wattage of each input. Inputs may be tied together if they do not exceed the load capacity rating of the DC power supply.



DISTRIBUTION



ORDERING

Example: WHSPR LCTR 2X4 90CRI 35K 4800LM DARK DALI8 57VDC SWC

Series	Decorative Element	Size	LED Color Rendering	Dynamic Feature	Dynamic Range	LED Output ¹
WHSPR Whisper LED	LCTR Luminous Center	2X2 2'x2' 2X4 2'x4' 1X4 1'x4'	90CRI >90CRI	TUWH Tunable White	RHYR Rhythm Range (2700K - 6500K)	2000LM² 2000 Lumens 3000LM³ 3000 Lumens 3300LM⁴ 3300 Lumens 4000LM 4000 Lumens 4800LM⁵ 4800 Lumens 5000LM⁶ 5000 Lumens HE6000LM^{6,9} High efficiency 6000 Lumens HE7200LM^{7,9} High efficiency 7200 Lumens HE9600LM^{7,9} High efficiency 9600 Lumens HE12000LM^{7,9} High efficiency 12000 Lumens

Minimum Dimming Level	Control Input	Voltage	Shielding Center	Options
DARK <1% Minimum Dimming	DALI8 eldoLED DT8 log<1% min	57VDC 57VDC, Class 2 Only	SWC Soft White Acrylic YBC Micropismatic Conical Deglaring Lens	AMF Antimicrobial Finish LATC Earthquake Clips

- Notes:**
- Nominal values.
 - 2000LM output valid for 2x2 and 1x4 sizes.
 - 3000LM output valid for 2x4 size.
 - 3300LM output valid for 2x2 and 1x4 sizes.
 - 4800LM option not available on 2x2 size.
 - 5000LM and HE6000LM output valid for 2x2 size only.
 - HE7200LM, HE9600LM, and HE12000LM output valid for 2x4 size only.
 - Not used.
 - HE6000LM, HE7200LM, HE9600LM, and HE12000LM output only available in 90CRI.

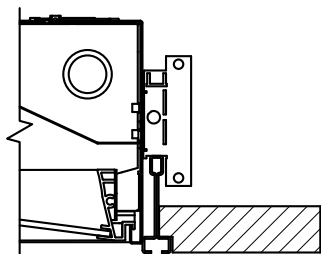
OPTICAL SCALING CHARTS

DISTRIBUTIONS	MULTIPLIER
SWC	1
YBC	0.96

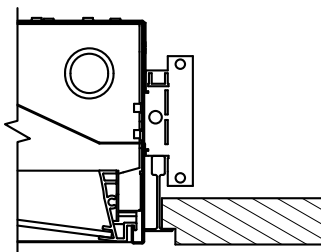
EXPECTED LIFE: L80@ 60,000 hours; 25°C ambient temperature

MOUNTING

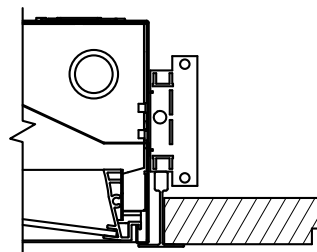
Recessed, lay-in formed steel trim. Universal trim accommodates 9/16" slot grid or 15/16" inverted tee, or 9/16" inverted tee.



UNIV
(9/16" Slot Grid)



UNIV
(9/16" Grid)



UNIV
(15/16" Grid)

For recessed mounting in hard ceiling applications, use one of the following drywall grid adapters (ordered separately).

Fixture	Drywall Grid Adapter (DGA)
WHSPR 2X2	DGA22
WHSPR 2X4	DGA24
WHSPR 1X4	DGA14WHS

INTELLIGENT LUMINAIRE TECHNOLOGY GUIDE

TUWH	Choose nomenclature from these columns				
Driver Configurations for Whisper	Minimum Dimming Level	Control Input	Driver	Dimming Range	Notes
	DARK	DAL18	eldoLED DUAL drive DT8 compatible	100% to 0.1%	Logarithmic Dimming

DC2DC

DC-powered Lighting, DC2DC Architecture

Acuity Brands' DC2DC architecture provides for distributed low-voltage DC power and digital controls for a range of LED luminaires, including the WHSPR. The DC2DC architecture enhances an LED lighting system's efficiency by eliminating the need and cost to convert AC to DC power at the luminaire and facilitating the installation and commissioning of lighting controls. Inherently more efficient by design, our DC-powered lighting architecture also delivers savings at design and installation, facilitates maintenance, and empowers lighting design focused on sustainable and well-being applications.

Components include:

- DCHUB (ordered separately), distributes DC power up to 1080 VA of DC-powered LED luminaires including support for emergency lighting.
- 57 VDC powered LED luminaires, with Static CCT or Tunable White, based on control options.
- nLight® lighting control
 - Integral or offboard wired networked lighting control, with nLight control devices (ordered separately).
 - Embedded nLight AIR wireless devices in 57VDC powered Static CCT LED luminaires.
- Class 2 power and control cables.
- The number of luminaires that can be supported by a single DCHUB port is a function of luminaire wattage and conductor losses. Please refer to the fixture wattages listed and the DCHUB spec sheet for additional details. Alternatively, the LED luminaires can be supplied with an approved, UL Listed, Class 2 power source supplying between 52.3 and 57.0 VDC at the input to the luminaire.

Note:

All luminaires require 57VDC option along with the corresponding Control Input option for DALI or DALI8 external nPS80 DALI 57VDC wired nLight control or NLTAIR2 or NLTAIREM2 embedded wireless lighting control.

When using external wired nLight control, nPS80 DALI 57 VDC is mounted locally with the controlled luminaires. Only 2 #16 AWG (min.) conductors are necessary between the DC power source and the nPS80 DALI controller, and 4 conductors between the controller and the luminaires.

When using nLight embedded wireless controls only 2 #16 AWG (min.) conductors are necessary between the DC power source and the luminaire runs.

Click [DC2DC](#) for more information.

SPECIFICATIONS

Housing

Nominal 1'x4', 2'x2' or 2'x4' housings fabricated from 22-gauge, cold-rolled steel.

Finish

Matte-white powder coat.

Reflector

Precision-formed steel; highly reflective white.

Shielding

Hinged door frame is constructed of extruded aluminum center and side rails with cold-rolled steel end caps capturing the 3 individual optical panels, forming a single unit. The frame can be positioned on either side of the fixture housing to provide easy room side access for maintenance. Shielding options are as follows: Center Panel: Soft-white acrylic or optional microprismatic conical de-glaring lens. Side Panels: Soft-white acrylic.

Mounting

Accommodates 9/16" slot grid or 15/16" inverted tee or 9/16" inverted tee.

Driver

eldoLED constant current driver option delivers ultrasmooth dimming resolution from 100% to less than 1%, and choices for control, while assuring flicker free, low current inrush, high efficiency and low EMI. Luminaires operate over a voltage ranging from 53VDC to 57VDC.

For recessed mounting in hard ceiling applications, use a Drywall Grid Adapter (DGA22, DGA24, or DGA14WHS). Ordered separately.

LED Life

Rated 60,000 hours (L80) at 25° C ambient temperature.

Color Consistency

The Acuity Brands circuit boards with color a variation of no greater than a 2.5 Step MacAdam (2.5SDCM) along the black body locus from board to board.

Maintenance

Serviceable from below with easy access to electrical components.

Certification

CSA Certified to meet U.S. and Canadian standards, CSA Certified for damp locations, IC-rated.

Warranty

5-year limited warranty. This is the only warranty provided and no other statements in this specification sheet create any warranty of any kind. All other express and implied warranties are disclaimed. Complete warranty terms located at: www.acuitybrands.com/support/warranty/terms-and-conditions

Note: Actual performance may differ as a result of end-user environment and application.
All values are design or typical values, measured under laboratory conditions at 25 °C.
Specifications subject to change without notice.