

MARK ARCHITECTURAL LIGHTING™



The **Whisper LED** Series **Luminous Center Tunable White**

Whisper LED has joined the Mainstream Dynamic family of luminaires with two Tunable White ranges in the same beautiful and distinguished form. Distributed intelligence enables the previously unachievable – independent control of color temperature and intensity.

Gently sloping side panels give Whisper LED its depth and appealing angles. Whether units are installed in rows or individually, the look is artfully clean and simple. Whisper LED is available in 1' x 4', 2' x 2', and 2' x 4' sizes, and fits perfectly in a variety of business and institutional settings including offices, schools, and hospitals.

Type:

Project:

Catalog Number:

DO NOT TYPE HERE. Autopopulated field.

Specification Features (continued on page 2)

Housing

Nominal 1'x4', 2'x2' or 2'x4' housings fabricated from 22-gauge, cold-rolled steel.

Finish

Matte-white powder coat.

Reflector

Precision-formed steel; highly reflective white.

Shielding

Hinged door frame is constructed of extruded aluminum center and side rails with cold-rolled steel end caps capturing the 3 individual optical panels, forming a single unit. The frame can be positioned on either side of the fixture housing to provide easy room side access for maintenance. Shielding options are as follows:

Center Panel: Soft-white acrylic or optional microprismatic conical de-glaring lens.

Side Panels: Soft-white acrylic.

Mounting

Accommodates 9/16" slot grid or 15/16" inverted tee or 9/16" inverted tee.

For recessed mounting in hard ceiling applications, use a Drywall Grid Adapter (DGA22, DGA24, or DGA14WH). Ordered separately.

Shipping

5-10 business days from clean release.

See WHSPR QS spec sheet for 5 day shipping configurations.

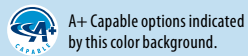
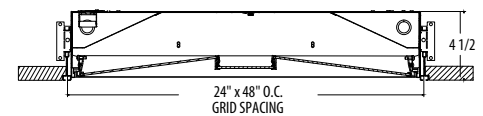
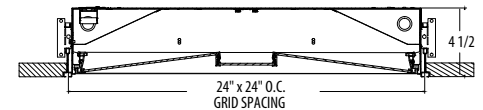
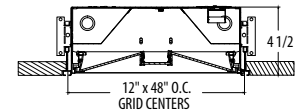
LED Life

Rated 60,000 hours (L80) at 25° C ambient temperature.

Color Consistency

The Acuity Brands circuit boards with color a variation of no greater than a 2.5 Step MacAdam (2.5SDCM) along the black body locus from board to board.

Technical Drawing



Declare.



eldoLED
your product | our drive



Ordering

Example: WHSPR LCTR 2X4 4800LM TUWH RHYP 80CRI DARK NLIGHT MVOLT PDT ADC SWC

Series	Decorative Element	Size	LED Output ¹	Dynamic Feature	Dynamic Range	LED Color Rendering	Minimum Dimming Level	Control Input
WHSPR Whisper LED	LCTR Luminous Center	2X2 2' x 2'	2000LM ² 2000 Lumens	TUWH Tunable White	PROR Productivity Range (3000K - 5000K)	80CRI >80 CRI 90CRI >90 CRI	DARK <1% Minimum Dimming	NLIGHT nLight Enabled
		2X4 2' x 4'	3000LM ² 3000 Lumens					
		1X4 1' x 4'	3300LM ⁴ 3300 Lumens					
		4000LM ⁴ 4000 Lumens						
			4800LM ⁵ 4800 Lumens		RHYR Rhythm Range (2700K - 6500K)			

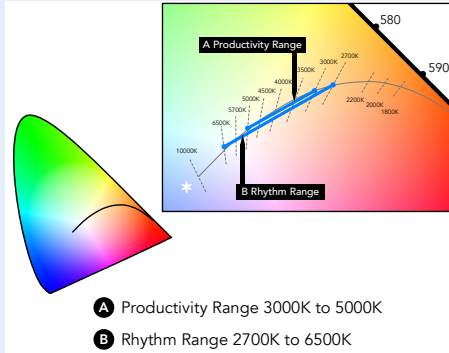
Voltage	Primary Sensors ⁶	Shielding Center	Options
120 120V 277 277V	(blank) No Sensor PIR Occupancy Sensor- Passive Infrared PDT Occupancy Sensor- Dual Technology (Passive Infrared & Microphonics) API PIR Occupancy Sensor & Photocell APD PDT Occupancy Sensor & Photocell	SWC Soft White Acrylic YBC Microprismatic Conical Deglaring Lens	E10WLCP ⁷ 10W integral battery pack, constant power with self diagnostic. T20 Compliant. BGTD ⁸ Generator Transfer Device AMF Antimicrobial Finish LATC Earthquake Clips GLR ⁹ Fast-blow Fuse GMF ⁹ Slow-blow Fuse SMK ¹⁰ Surface Mount Kit

For footnotes, see page 3.

Specification Features (continued)

Mainstream Dynamic Tunable White with nTune Technology

Tunable white nTune™ is an all digital light color temperature control within an nLight enabled luminaire. This brings tunable white lighting control into the mainstream with repeatable, consistent results in an economical luminaire form and system already familiar to schools. Designers and facility operators are granted the freedom to tie scenes to specific activities or to complement colors or materials within a visual environment. nTune™ allows color temperature settings through the Productivity Range of 3000K-5000K or Rhythm Range of 2700K to 6500K. Refer to the nLight Programming User's Guide for instructions on customizing to your application with SensorView™.



Tunable White GPHD

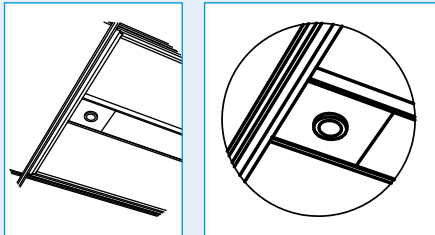
- **Gamut:** One dimensional warm-Cool
- **Path:** Direct 3000k to 5000k (Productivity Range) or 2700K to 6500K (Rhythm Range)
- **Handle:** Two Natural Language Handles: Intensity and CCT
- **Data:** nLight with nTune technology for both handles of control

Driver

eldoLED constant current driver options delivers choice of dimming range for ultra-smooth dimming resolution from 100% to less than 1% , and choices for control, while assuring flicker free, low current inrush, 89% efficiency and low EMI.

Integrated Controls

Optional nLight® embedded controls make luminaire addressable- allowing it to digitally communicate with other nLight enabled controls such as dimmers, switches, occupancy sensors and photocontrols. Simply connect all the nLight enabled control devices using standard CAT5 Cabling.



Pictured with Occupancy Sensor and Photocell

Maintenance

Serviceable from below with easy access to electrical components.

Lumen Management

An optional lumen management system provides onboard intelligence that actively manages the LED light source so that constant lumen output is maintained over the system's life, creating a consistently illuminated environment while preventing energy waste. (Option: CL80)

A+ Capable Luminaire

This item is an A+ capable luminaire, which has been designed and tested to provide consistent color appearance and out-of-the-box control compatibility with simple commissioning.

- All configurations of this luminaire meet the Acuity Brands' specification for chromatic consistency
- This luminaire is part of an A+ Certified solution for nLight® control networks when ordered with drivers marked by a shaded background*
- This luminaire is part of an A+ Certified solution for nLight control networks, providing advanced control functionality at the luminaire level, when selection includes driver and control options marked by a shaded background*

To learn more about A+, [visit www.acuitybrands.com/aplus](http://www.acuitybrands.com/aplus).

*See ordering tree for details

Certification

CSA Certified to meet U.S. and Canadian standards, CSA Certified for damp locations, IC-rated.

Warranty

5-year limited warranty. Complete warranty terms located at: www.acuitybrands.com/CustomerResources/Terms_and_conditions.aspx

Note: Actual performance may differ as a result of end-user environment and application.

All values are design or typical values, measured under laboratory conditions at 25 °C.

Specifications subject to change without notice.

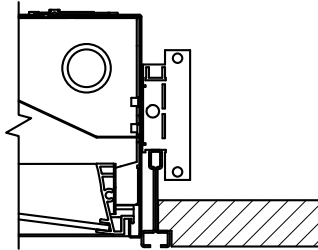
* Applies to eldoLED driver configurations.

Notes

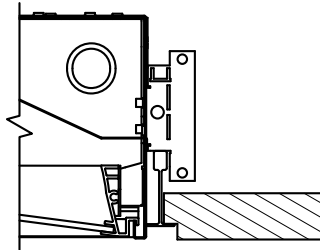
1. Nominal values.
2. 2000LM output valid for 2x2 and 1x4 sizes.
3. 3000LM output valid for 2x4 size.
4. 3300LM output valid for 2x2 and 1x4 sizes.
5. 4800LM option not available on 2x2.
6. Not available with 1x4. All sensors are factory-installed onboard sensors.
7. Test switch located on internal reflector behind diffuser. Glow of test switch visible from below.
8. Must select 120 or 277 option not available with E10WLCP option.
9. Voltage specified must select 120 or 277.
10. Not available with AMF finish.

Mounting

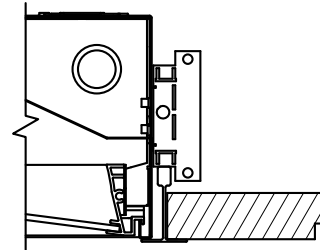
Recessed, lay-in formed steel trim. Universal trim accommodates 9/16" slot grid or 15/16" inverted tee, or 9/16" inverted tee.



UNIV
(9/16" Slot Grid)



UNIV
(9/16" Grid)



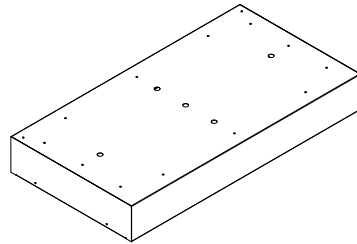
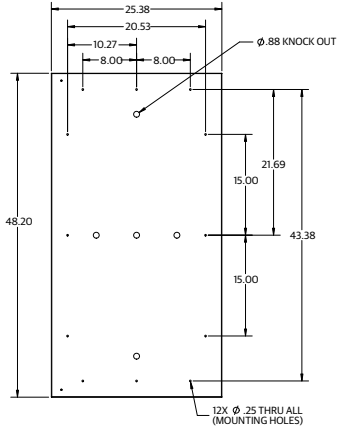
UNIV
(15/16" Grid)

For recessed mounting in hard ceiling applications, use one of the following drywall grid adapters (ordered separately).

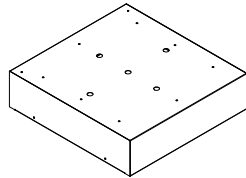
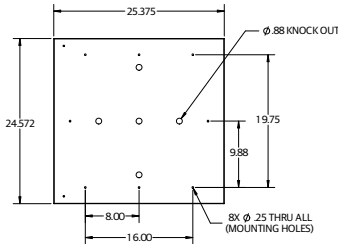
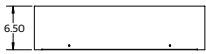
Fixture	Drywall Grid Adapter (DGA)
WHSPR 2X2	DGA22
WHSPR 2X4	DGA24
WHSPR 1X4	DGA14WHS

SURFACE MOUNT KIT

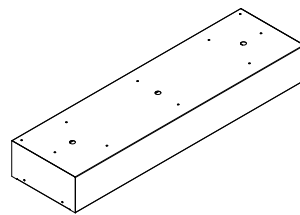
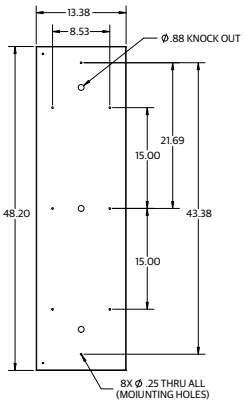
Formed and welded 20 gauge steel housing with (2) outer end plates (shipped separate from housing). Available in standard white paint finish.



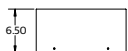
Size: 2x4
Approx Weight: 38 lbs.



Size: 2x2
Approx Weight: 25 lbs.



Size: 1x4
Approx Weight: 30 lbs.



Wall Pods

Tunable White Wall Pods



nPODM 2P DX CCT



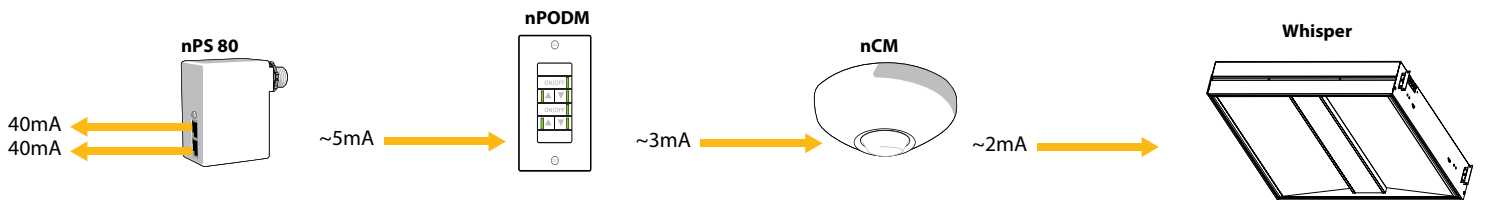
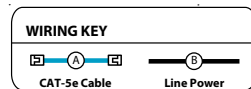
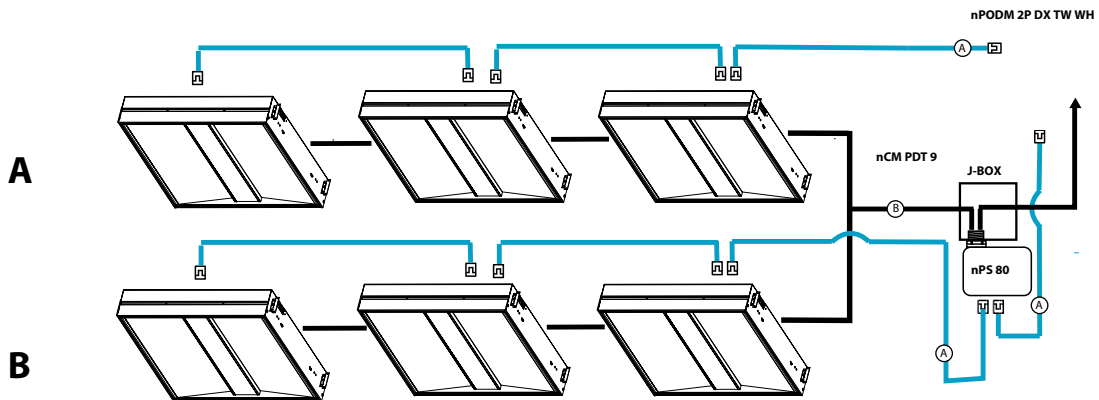
nPODM 4S DX EDUTW



nPODM 4S EDUTW

Typical nLight network layout

Typical nLight network layout with power supply, sensor and wallpod.



***Note: Also applicable to linear runs. Each 4' fixture section must be connected, by CAT5 cable, to another fixture.**