

Avant Garde

11W/16W VERTICAL CYLINDER LED

Project: _____

Fixture Type: _____

Location: _____

Contact/Phone: _____



T381L G2

PRODUCT DESCRIPTION

The classic, simple appearance of the Vertical Cylinder LED fixtures offers a fresh take on a traditional aesthetic. The subtle elegance is carried through the entire design producing an understated charm. The 11W/16W Vertical Cylinder LED fixtures have integral TIR optics which enable uniform spot, narrow flood, flood or wide flood distributions to be achieved. These fixtures have an integral, bayonet-mounted accessory holder that accommodates one accessory if desired. The 11W/16W Vertical Cylinder LED can deliver up to 1249 lumens, at efficacies up to 114 LPW and having a rated life of 50,000 hours. Available in 2700K, 3000K, 3500K and 4000K color temperatures, the white-light 11W/16W Vertical Cylinder LED is compatible with all Juno line voltage track and standard adapter accessories. Also available in WarmDim® versions that mimic halogen dimming.



PRODUCT SPECIFICATIONS

Construction All-metal housing and custom designed concealed heat sink provides outstanding thermal management, yielding 70% average lumen maintenance at 50,000 hours of operation • Passively-cooled design – no moving parts to break or wear-out • Extruded aluminum vertically mounted LED driver housing • Concealed fixture wiring for a clean aesthetic • Fashionable, elegant design complements any decor • Available in white, black and silver painted finishes.

LED High performance LED array provides outstanding reliability, performance and color quality/consistency • 2700K, 3000K, 3500K or 4000K white phosphor high performance LEDs • Chromaticity range within a 3-step MacAdam Ellipse for static white versions, within a 2-step MacAdam Ellipse for WarmDim versions • 80 CRI minimum on standard product • Optional high CRI versions offer 90 CRI minimum, with an R9 value greater than 50 • Optional SpectralWhite versions are also available which make whites appear naturally brilliant and render colors more richly • Optional WarmDim versions offer 90 CRI minimum and mimic halogen dimming (3000K - 1800K).

Driver Assembled in a side-mount vertical housing to minimize overall fixture footprint • Insulating air gap between driver and LED light engine optimizes thermal operation • Provides quiet operation with or without dimming • Fixtures are dimmable using high quality reverse phase ELV dimmers approved by Juno – see [T381L-G2-DIM](#) • Solid state electronic, Class 2 compliant • Integral overcurrent and short circuit protection • Class B FCC Part 15 rated.

Optics - Static White Interchangeable computer-designed custom TIR optics available in four factory-configured beam spreads • One TIR optic provided with fixture (as specified in catalog number) • Accessory optics available to enable beam changes in the field • Beam patterns can be altered as desired using a variety of available light control accessories.

Optics - WarmDim Computer-designed custom TIR optic combines with a high-efficiency micro-optic film to create uniform spot, narrow flood, flood or wide flood beam spreads • Accessory films available to enable beam changes in the field - consult factory • Beam patterns can be altered as desired using a variety of available light control accessories.

Juno Universal Track Adapter Universally compatible with both Trac-Master 1-circuit or 2-circuit track, Trac-Lites track, monopoints and special mountings • Also UL Recognized for use on ConTech® LT Series track • Copper alloy contacts provide precise spring action – no arcing and will not take a set • True, positive electrical ground • On/off switch included • Patented embossed polarity arrows on bottom of adapter • Spring-loaded positive latch with embossed polarity arrows secures track fixture to track • Two-position power contact provided for two-circuit application.

Alternate TEK/HTEK Track Adapter Compatible with either Juno TEK or HTEK track systems • System specific and assembled to track fixture • Integrally polarized construction to prevent reverse installation – only allows insertion in proper orientation • Rotary circuit selector enables simple switching between circuits • Integral on/off switch enables individual fixtures to be switched for servicing.

Alternate GTYPE Track Adapter Compatible with track systems based on GES type track, including Lithonia LT Commercial Track (not LTS type) • System specific and assembled to track fixture • Consult factory for additional information.

Alternate HTYPE Track Adapter Compatible with track systems which use a H-type track adapter, including Lithonia LTS Decorative Track (not LT type) • System specific and assembled to track fixture • Two-position power contact provided for two-circuit application • Consult factory for additional information.

Alternate LTYPE Track Adapter Compatible with track systems which use a L-type track adapter • System specific and assembled to track fixture • Two-position power contact provided for two-circuit application • Consult factory for additional information.

Accessory Holder Integral to fixture design • Die cast aluminum construction • Precision bayonet mounting • Accommodates one accessory if desired.

Aiming 360° horizontal coverage • Greater than 90° vertical aiming capability.

Labels UL and C-UL Listed • 90CRI and SPW versions can be used to comply with California Title 24, Part 6 high efficacy LED light source requirements • Union made • Assembled in U.S.A.

Government Procurement

BAA – Buy America(n) Act: Product qualifies as a domestic end product under the Buy American Act as implemented in the FAR and DFARS. Product also qualifies as manufactured in the United States under DOT Buy America regulations.

BABA – Build America Buy America: Product qualifies as produced in the United States under the definitions of the Build America, Buy America Act.

Please refer to www.acuitybrands.com/buy-american for additional information.

Warranty 5-year limited warranty. This is the only warranty provided and no other statements in this specification sheet create any warranty of any kind. All other express and implied warranties are disclaimed. Complete warranty terms located at: www.acuitybrands.com/support/warranty/terms-and-conditions

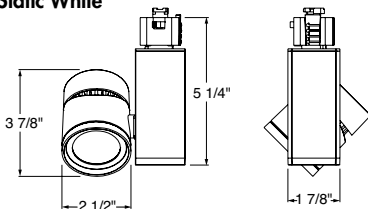
Note: Actual performance may differ as a result of end-user environment and application.

All values are design or typical values, measured under laboratory conditions at 25 °C.

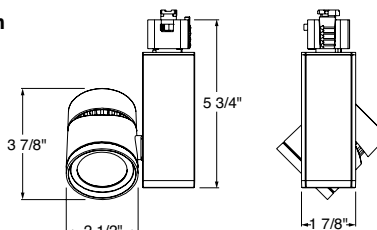
Specifications subject to change without notice.

DIMENSIONS

Static White



WarmDim



ConTech is a registered trademark of ConTech Lighting.



TRAC-MASTER®

Avant Garde

11W/16W VERTICAL CYLINDER LED

T381L G2

ORDERING INFORMATION

Ordering Example: T381L G2 30K SPW PDIM NFL WH

Series	Mounting Adapter Type	Generation	Color Temperature	Color Rendering Index	Dimming Compatibility	Distribution	Finish
T381L 11W Vertical Cylinder LED	(Blank) Juno Universal 120V Track Adapter	G2 Generation 2	27K 2700K	80CRI 80 CRI	OFF ¹ On/Off (Non-Dimming) PDIM Phase Dimmable	SP Spot Flood NFL Narrow Flood FL Flood WFL Wide Flood	BL Black SL Silver WH White
	HTEK ¹ HTEK 277V Track Adapter		30K 3000K	90CRI 90 CRI			
	TEK TEK 120V Track Adapter		35K 3500K	SPW ² SpectralWhite			
	GTYPE G-Type Track Adapter		40K 4000K				
	HTYPE H-Type Track Adapter						
LTYPE L-Type Track Adapter							
See page 5 for Direct Canopy Mount Option (CPY) specifications.							

Ordering Example: T381L HTYPE G2 WDIM HALR 90CRI PDIM FL BL

Series	Mounting Adapter Type	Generation	Color Temperature	Color Rendering Index	Dimming Compatibility	Distribution	Finish
T381L 16W Vertical Cylinder LED WarmDim	(Blank) Juno Universal 120V Track Adapter	G2 Generation 2	WDIM HALR WarmDim® 3000K-1800K	90CRI 90 CRI	PDIM Phase Dimmable	SP Spot Flood NFL Narrow Flood FL Flood WFL Wide Flood	BL Black SL Silver WH White
	TEK TEK 120V Track Adapter						
	GTYPE G-Type Track Adapter						
	HTYPE H-Type Track Adapter						
	LTYPE L-Type Track Adapter						

Accessories (Order Separately)							
HCLBL 200	Hexcell Louver - Black	DCCF 200 ³	Dichroic Color Correction Filter	PRISM 200	Prismatic Spread Lens	TIR1 SPT ⁵	TIR Optic - Spot
SNOOTBL 200	Snoot - Black	UVF 200	UV Filter	LSPREAD 200	Linear Spread Lens	TIR1 NFLD ⁵	TIR Optic - Narrow Flood
CGF 200	Color Glass Filters	DIFF 200	Diffusion Lens	T40N ⁴	Monopoint Canopy	TIR1 FLD ⁵	TIR Optic - Flood
DGF 200	Dichroic Glass Filters	SOLITE 200	Uniformity Lens			TIR5 WFLD ⁵	TIR Optic - Wide Flood

See specification sheet [D1.2.2](#) for details.

Other accessories can be found on specification sheet [D1.2.0](#).

Notes:

- 1 HTEK versions available with OFF option only, and OFF option available with HTEK version only.
- 2 3000K and 3500K only.
- 3 DCCF 200 HAL2700 corrects 3000K color to approximately 2700K and 4000K color to approximately 3400K.
- 4 Add finish code to complete catalog number (Example: T40N WH).
- 5 Compatible with static white versions only; contact factory for optical films to change beam spreads in WarmDim versions.


TRAC-MASTER®

Avant Garde

11W/16W VERTICAL CYLINDER LED
T381L G2
PERFORMANCE DATA¹

Catalog Number	Input Voltage	Input Watts (Typical)	Lumens	Efficacy (LPW)	Rated Life (Hours)
T381L G2 27K 80CRI PDIM SP	120V	11.0	1142	104	50,000
T381L G2 27K 80CRI PDIM NFL	120V	11.0	1121	102	50,000
T381L G2 27K 80CRI PDIM FL	120V	11.0	1159	105	50,000
T381L G2 27K 80CRI PDIM WFL	120V	11.0	1063	97	50,000
T381L G2 27K 90CRI PDIM SP	120V	11.0	986	90	50,000
T381L G2 27K 90CRI PDIM NFL	120V	11.0	968	88	50,000
T381L G2 27K 90CRI PDIM FL	120V	11.0	1001	91	50,000
T381L G2 27K 90CRI PDIM WFL	120V	11.0	918	83	50,000
T381L G2 30K 80CRI PDIM SP	120V	11.0	1142	104	50,000
T381L G2 30K 80CRI PDIM NFL	120V	11.0	1121	102	50,000
T381L G2 30K 80CRI PDIM FL	120V	11.0	1159	105	50,000
T381L G2 30K 80CRI PDIM WFL	120V	11.0	1063	97	50,000
T381L G2 30K 90CRI PDIM SP	120V	11.0	1007	92	50,000
T381L G2 30K 90CRI PDIM NFL	120V	11.0	989	90	50,000
T381L G2 30K 90CRI PDIM FL	120V	11.0	1022	93	50,000
T381L G2 30K 90CRI PDIM WFL	120V	11.0	937	85	50,000
T381L G2 30K SPW PDIM SP	120V	11.0	1054	96	50,000
T381L G2 30K SPW PDIM NFL	120V	11.0	1034	94	50,000
T381L G2 30K SPW PDIM FL	120V	11.0	1069	97	50,000
T381L G2 30K SPW PDIM WFL	120V	11.0	981	89	50,000
T381L G2 35K 80CRI PDIM SP	120V	11.0	1209	110	50,000
T381L G2 35K 80CRI PDIM NFL	120V	11.0	1187	108	50,000
T381L G2 35K 80CRI PDIM FL	120V	11.0	1227	112	50,000
T381L G2 35K 80CRI PDIM WFL	120V	11.0	1126	102	50,000
T381L G2 35K 90CRI PDIM SP	120V	11.0	1069	97	50,000
T381L G2 35K 90CRI PDIM NFL	120V	11.0	1050	95	50,000
T381L G2 35K 90CRI PDIM FL	120V	11.0	1085	99	50,000
T381L G2 35K 90CRI PDIM WFL	120V	11.0	995	90	50,000
T381L G2 35K SPW PDIM SP	120V	11.0	1080	98	50,000
T381L G2 35K SPW PDIM NFL	120V	11.0	1060	96	50,000
T381L G2 35K SPW PDIM FL	120V	11.0	1096	100	50,000
T381L G2 35K SPW PDIM WFL	120V	11.0	1005	91	50,000
T381L G2 40K 80CRI PDIM SP	120V	11.0	1230	112	50,000
T381L G2 40K 80CRI PDIM NFL	120V	11.0	1208	110	50,000
T381L G2 40K 80CRI PDIM FL	120V	11.0	1249	114	50,000
T381L G2 40K 80CRI PDIM WFL	120V	11.0	1145	104	50,000
T381L G2 40K 90CRI PDIM SP	120V	11.0	1090	99	50,000
T381L G2 40K 90CRI PDIM NFL	120V	11.0	1070	97	50,000
T381L G2 40K 90CRI PDIM FL	120V	11.0	1106	101	50,000
T381L G2 40K 90CRI PDIM WFL	120V	11.0	1015	92	50,000
T381L G2 WDIM HALR 90CRI SP (Full-On)	120V	15.8	1074	68	50,000
T381L G2 WDIM HALR 90CRI NFL (Full-On)	120V	15.8	1128	71	50,000
T381L G2 WDIM HALR 90CRI FL (Full-On)	120V	15.8	1067	68	50,000
T381L G2 WDIM HALR 90CRI WFL (Full-On)	120V	15.8	1085	69	50,000

Notes:
¹ Performance data, including Rated Life, is based on measurements of an individual fixture operating at 120V in a 25°C ambient.

ELECTRICAL DATA

	Static White	
Input Voltage	120V	277V
Input Current (max.)	0.12A	0.05A
Power Factor	>0.99	>0.96
T.H.D.	<10%	<20%

	WarmDim	
Input Voltage	120V	277V
Input Current (max.)	0.15A	0.07A
Power Factor	>0.99	>0.96
T.H.D.	<10%	<20%

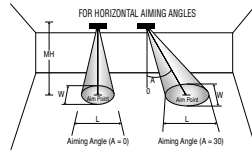
11W/16W VERTICAL CYLINDER LED

T381L G2

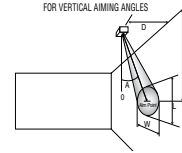
PHOTOMETRICS

CBCP • Centerbeam candlepower
 FC • Footcandles at beam center (aim point)

In vertical aiming applications, aim point (X) is determined by dividing distance from the wall (D) by the tangent of the desired aim angle (A) (0.5774 for 30°, 1.0 for 45°, 1.732 for 60°).



Horizontal Aiming Angles



Vertical Aiming Angles



Static White Fixture	Beam Type	Beam Spread	Rated Life	CBCP	0°			30°			30°			45°			60°								
					MH	FC	L W	FC	L W	D	FC	X	L W	FC	X	L W	D	FC	X	L W					
Vertical Cylinder 11W LED 30K, 80CRI Spot	SP	16°	50000	10952	6	304	1.7	1.7	198	2.2	1.9	3	152	5.2	3.6	1.7	430	3.0	1.7	1.2	6	198	3.5	2.2	1.9
					8	171	2.2	2.2	111	3.0	2.6	4	86	6.9	4.7	2.2	242	4.0	2.3	1.6	8	111	4.6	3.0	2.6
					10	110	2.8	2.8	71	3.7	3.2	5	55	8.7	5.9	2.8	155	5.0	2.8	2.0	10	71	5.8	3.7	3.2
					12	76	3.4	3.4	49	4.5	3.9	6	38	10.4	7.1	3.4	108	6.0	3.4	2.4	12	49	6.9	4.5	3.9
Vertical Cylinder 11W LED 30K, 80CRI Narrow Flood	NFL	26°	50000	4637	4	290	1.9	1.9	188	2.5	2.1	2	145	3.5	4.4	1.9	410	2.0	2.0	1.3	4	188	2.3	2.5	2.1
					6	129	2.8	2.8	84	3.8	3.2	3	64	5.2	6.7	2.8	182	3.0	3.0	2.0	6	84	3.5	3.8	3.2
					8	72	3.7	3.7	47	5.1	4.3	4	36	6.9	8.9	3.7	102	4.0	3.9	2.6	8	47	4.6	5.1	4.3
					10	46	4.7	4.7	30	6.3	5.4	5	23	8.7	11.1	4.7	66	5.0	4.9	3.3	10	30	5.8	6.3	5.4
Vertical Cylinder 11W LED 30K, 80CRI Flood	FL	38°	50000	2693	4	168	2.7	2.7	109	3.8	3.2	1	337	1.7	4.2	1.4	952	1.0	1.5	1.0	3	194	1.7	2.8	2.4
					5	108	3.4	3.4	70	4.7	3.9	2	84	3.5	8.4	2.7	238	2.0	3.1	1.9	4	109	2.3	3.8	3.2
					6	75	4.1	4.1	49	5.7	4.7	3	37	5.2	12.6	4.1	106	3.0	4.6	2.9	5	70	2.9	4.7	3.9
					7	55	4.8	4.8	36	6.6	5.5	4	21	6.9	16.8	5.5	60	4.0	6.2	3.9	6	49	3.5	5.7	4.7
Vertical Cylinder 11W LED 30K, 80CRI Wide Flood	WFL	51°	50000	1304	2	326	1.9	1.9	212	2.7	2.2	1.0	163	1.7	11.5	1.9	461	1.0	2.4	1.3	2	212	1.2	2.7	2.2
					3	145	2.8	2.8	94	4.1	3.3	1.5	72	2.6	17.2	2.8	205	1.5	3.7	2.0	3	94	1.7	4.1	3.3
					4	82	3.8	3.8	53	5.4	4.4	2.0	41	3.5	22.9	3.8	115	2.0	4.9	2.7	4	53	2.3	5.4	4.4
					5	52	4.7	4.7	34	6.8	5.5	2.5	26	4.3	**	4.7	74	2.5	6.1	3.3	5	34	2.9	6.8	5.5
6	36	5.7	5.7	24	8.2	6.5	3.0	18	5.2	**	5.7	51	3.0	7.3	4.0	6	24	3.5	8.2	6.5					

**Due to steep aiming angle, length of beam extends beyond 25'.

CRI/CCT Multiplier		
CRI	CCT	Multiplier
80	27K	1.00
	30K	1.00
	35K	1.06
	40K	1.08
90	27K	0.86
	30K	0.82
	35K	0.94
	40K	0.95
SPW	30K	0.92
	35K	0.95



TRAC-MASTER®

Avant Garde

11W/16W VERTICAL CYLINDER LED

T381L G2

PHOTOMETRICS

WarmDim Fixture	Beam Type	Beam Spread	Rated Life	CBCP	0°				30°			30°					45°				60°				
					MH	FC	L	W	FC	L	W	D	FC	X	L	W	FC	X	L	W	D	FC	X	L	W
Vertical Cylinder 16W LED WarmDim Spot	SP	20°	50000	5239	6	146	2.1	2.1	95	2.8	2.4	3	73	5.2	4.6	2.1	206	3.0	2.1	1.5	6	95	3.5	2.8	2.4
					8	82	2.8	2.8	53	3.7	3.2	4	41	6.9	6.1	2.8	116	4.0	2.8	2.0	8	53	4.6	3.7	3.2
					10	52	3.5	3.5	34	4.7	4.0	5	26	8.7	7.6	3.5	74	5.0	3.6	2.4	10	34	5.8	4.7	4.0
					12	36	4.1	4.1	24	5.6	4.8	6	18	10.4	9.1	4.1	51	6.0	4.3	2.9	12	24	6.9	5.6	4.8
					14	27	4.8	4.8	17	6.5	5.6	7	13	12.1	10.6	4.8	38	7.0	5.0	3.4	14	17	8.1	6.5	5.6
Vertical Cylinder 16W LED WarmDim Narrow Flood	NFL	23°	50000	4560	4	285	1.6	1.6	185	2.2	1.8	2.0	143	3.5	3.6	1.6	403	2.0	1.7	1.1	4	185	2.3	2.2	1.8
					6	127	2.4	2.4	82	3.2	2.8	2.5	91	4.3	4.5	2.0	258	2.5	2.1	1.4	6	82	3.5	3.2	2.8
					8	71	3.2	3.2	46	4.3	3.7	3.0	63	5.2	5.4	2.4	179	3.0	2.5	1.7	8	46	4.6	4.3	3.7
					10	46	4.0	4.0	30	5.4	4.6	3.5	47	6.1	6.4	2.8	132	3.5	2.9	2.0	10	30	5.8	5.4	4.6
					12	32	4.8	4.8	21	6.5	5.5	4.0	36	6.9	7.3	3.2	101	4.0	3.3	2.3	12	21	6.9	6.5	5.5
Vertical Cylinder 16W LED WarmDim Flood	FL	35°	50000	2269	4	142	2.5	2.5	92	3.5	2.9	1.0	284	1.7	3.6	1.3	802	1.0	1.4	0.9	3	164	1.7	2.6	2.2
					5	91	3.1	3.1	59	4.3	3.6	1.5	126	2.6	5.3	1.9	357	1.5	2.1	1.3	4	92	2.3	3.5	2.9
					6	63	3.8	3.8	41	5.2	4.3	2.0	71	3.5	7.1	2.5	201	2.0	2.8	1.8	5	59	2.9	4.3	3.6
					7	46	4.4	4.4	30	6.0	5.1	2.5	45	4.3	8.9	3.1	128	2.5	3.5	2.2	6	41	3.5	5.2	4.3
					8	35	5.0	5.0	23	6.9	5.8	3.0	32	5.2	10.7	3.8	89	3.0	4.2	2.7	7	30	4.0	6.0	5.1
Vertical Cylinder 16W LED WarmDim Wide Flood	WFL	54°	50000	1196	2	299	2.0	2.0	194	2.9	2.3	1.0	150	1.7	17.2	2.0	423	1.0	2.7	1.4	2	194	1.2	2.9	2.3
					3	133	3.0	3.0	86	4.4	3.5	1.5	66	2.6	**	3.0	188	1.5	4.1	2.1	3	86	1.7	4.4	3.5
					4	75	4.0	4.0	49	5.9	4.7	2.0	37	3.5	**	4.0	106	2.0	5.4	2.9	4	49	2.3	5.9	4.7
					5	48	5.1	5.1	31	7.4	5.8	2.5	24	4.3	**	5.1	68	2.5	6.8	3.6	5	31	2.9	7.4	5.8
					6	33	6.1	6.1	22	8.8	7.0	3.0	17	5.2	**	6.1	47	3.0	8.1	4.3	6	22	3.5	8.8	7.0

**Due to steep aiming angle, length of beam extends beyond 25'.

TRAC-MASTER®

Avant Garde

Project: _____

Fixture Type: _____

Location: _____

Contact/Phone: _____

11W/16W VERTICAL CYLINDER LED
T381L G2

DIRECT CANOPY MOUNT

PRODUCT DESCRIPTION

The classic, simple appearance of the Vertical Cylinder LED fixtures offers a fresh take on a traditional aesthetic. The subtle elegance is carried through the entire design producing an understated charm. The 11W/16W Vertical Cylinder LED fixtures have integral TIR optics which enable uniform spot, narrow flood, flood or wide flood distributions to be achieved. These fixtures have an integral, bayonet-mounted accessory holder that accommodates one accessory if desired. The 11W/16W Vertical Cylinder LED can deliver up to 1249 lumens, at efficacies up to 114 LPW and having a rated life of 50,000 hours. The Canopy Mount version is designed to mount over a standard j-box and is available with a variety of performance options including 277V operation, 347V operation, phase-dimming, and 0-10V dimming.



PRODUCT SPECIFICATIONS

Construction All-metal housing and custom designed concealed heat sink provides outstanding thermal management, yielding 70% average lumen maintenance at 50,000 hours of operation • Passively-cooled design – no moving parts to break or wear-out • Extruded aluminum vertically mounted LED driver housing • Concealed fixture wiring for a clean aesthetic • Fashionable, elegant design complements any decor • Available in white or black painted finishes.

LED High performance LED array provides outstanding reliability, performance and color quality/consistency • 2700K, 3000K, 3500K or 4000K white phosphor high performance LEDs • Chromaticity range within a 3-step MacAdam Ellipse for static white versions, within a 2-step MacAdam Ellipse for WarmDim versions • 80 CRI minimum on standard product • Optional high CRI versions offer 90 CRI minimum, with an R9 value greater than 50 • Optional SpectralWhite versions are also available which make whites appear naturally brilliant and render colors more richly • Optional WarmDim versions offer 90 CRI minimum and mimic halogen dimming (3000K - 1800K).

Electrical/Driver Multi-volt (120-277V, 50/60Hz) phase-dimmable or 0-10V dimmable driver mounted in a vertical driver housing and assembled to a slim canopy • Optional 347V 0-10V dimmable driver mounted in a deep canopy • 0-10V dimming requires two (2) additional low-voltage wires to be pulled.

Dimming MVOLT versions are phase-dimmable (120V only) down to 10% or less using high quality, factory-approved dimmers - see [T381L-G2-DIM](#) • MVOLT versions are also 0-10V dimmable down to as low as 1% and require two (2) additional low-voltage wires to be pulled • 347V versions are 0-10V dimmable down to as low as 1% and require two (2) additional low-voltage wires to be pulled.

Optics - Static White Interchangeable computer-designed custom TIR optics available in four factory-configured beam spreads • One TIR optic provided with fixture (as specified in catalog number) • Accessory optics available to enable beam changes in the field • Beam patterns can be altered as desired using a variety of available light control accessories.

Optics - WarmDim Computer-designed custom TIR optic combines with a high-efficiency micro-optic film to create uniform spot, narrow flood, flood or wide flood beam spreads • Accessory films available to enable beam changes in the field - consult factory • Beam patterns can be altered as desired using a variety of available light control accessories.

Mounting Installs over a standard electrical j-box • Accent light is permanently, factory-assembled to the mounting canopy • Universal mounting plate accommodates octagon box and typical j-box mud rings • Mounting plate designed to be installed snug to mounting surface • May be ceiling or wall mounted in any orientation • Driver is assembled into vertical driver housing for MVOLT versions or into deep mounting canopy for 347V versions – see Dimensions section for canopy type and dimensions based on option selected • Canopy is securely tethered to mounting plate to facilitate wiring terminations.

Accessory Holder Integral to fixture design • Die cast aluminum construction • Precision bayonet mounting • Accommodates one accessory if desired.

Aiming 360° horizontal coverage • Greater than 180° vertical aiming capability.

Labels UL and C-UL Damp Location Listed • Union made • Assembled in U.S.A.

Government Procurement

BAA – Buy America(n) Act: Product qualifies as a domestic end product under the Buy American Act as implemented in the FAR and DFARS. Product also qualifies as manufactured in the United States under DOT Buy America regulations.

BABA – Build America Buy America: Product qualifies as produced in the United States under the definitions of the Build America, Buy America Act.

Please refer to www.acuitybrands.com/buy-american for additional information.

Warranty 5-year limited warranty. This is the only warranty provided and no other statements in this specification sheet create any warranty of any kind. All other express and implied warranties are disclaimed. Complete warranty terms located at: www.acuitybrands.com/support/warranty/terms-and-conditions

Note: Actual performance may differ as a result of end-user environment and application.

All values are design or typical values, measured under laboratory conditions at 25 °C.

Specifications subject to change without notice.

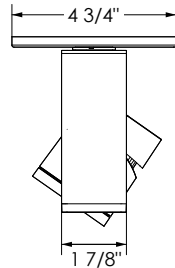
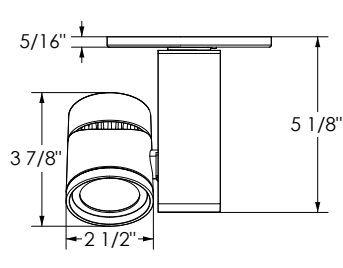
1 1W/16W VERTICAL CYLINDER LED

T381L G2

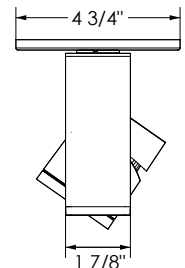
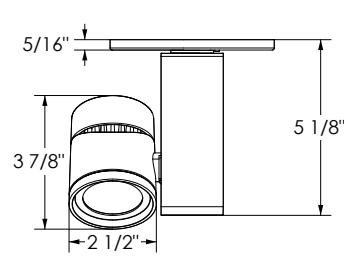
DIRECT CANOPY MOUNT

DIMENSIONS

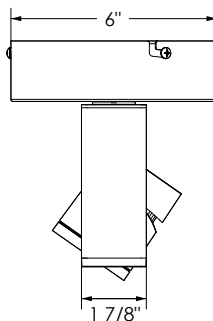
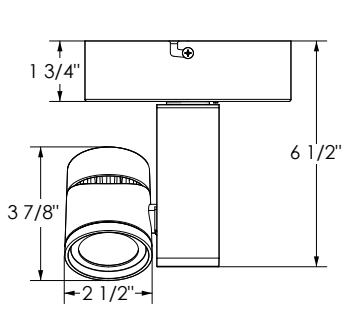
Static White – Slim Canopy (MVOLT 120-277V Versions)



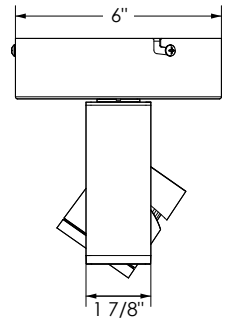
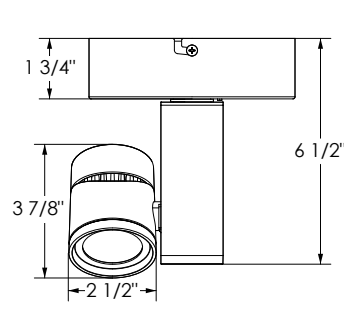
WarmDim – Slim Canopy (MVOLT 120-277V Versions)



Static White – Deep Canopy (347V Versions)



WarmDim – Deep Canopy (347V Versions)





TRAC-MASTER®

Avant Garde

11W/16W VERTICAL CYLINDER LED

T381L G2

DIRECT CANOPY MOUNT

ORDERING INFORMATION

Ordering Example: T381L CPY G2 30K 80CRI MVOLT NFL BL

Series	Mounting Adapter Type	Generation	Color Temperature	Color Rendering Index	Input Voltage ⁴
T381L 11W Vertical Cylinder LED	CPY Canopy Mounting	G2 Generation 2	27K 2700K 30K 3000K 35K 3500K 40K 4000K	80CRI 80 CRI 90CRI 90 CRI SPW¹ SpectralWhite	MVOLT 120V/277V Operation 347 347V Operation

Distribution	Finish
SP Spot NFL Narrow Flood FL Flood WFL Wide Flood	BL Black WH White

Ordering Example: T381L CPY G2 WDIM HALR 90CRI MVOLT NFL BL

Series	Mounting Adapter Type	Generation	Color Temperature	Color Rendering Index	Input Voltage ⁴
T381L 16W Vertical Cylinder LED WarmDim	CPY Canopy Mounting	G2 Generation 2	WDIM HALR WarmDim® 3000K-1800K	90CRI 90 CRI	MVOLT 120V/277V Operation 347 347V Operation

Distribution	Finish
SP Spot NFL Narrow Flood FL Flood WFL Wide Flood	BL Black WH White

Accessories (Order Separately)							
HCLBL 200 Hexcell Louver - Black	DCCF 200² Dichroic Color Correction Filter	PRISM 200 Prismatic Spread Lens	TIR1 SPT³ TIR Optic - Spot				
SNOOTBL 200 Snoot - Black	UVF 200 UV Filter	LSPREAD 200 Linear Spread Lens	TIR1 NFLD³ TIR Optic - Narrow Flood				
CGF 200 Color Glass Filters	DIFF 200 Diffusion Lens		TIR1 FLD³ TIR Optic - Flood				
DGF 200 Dichroic Glass Filters	SOLITE 200 Uniformity Lens		TIR5 WFLD³ TIR Optic - Wide Flood				

See specification sheet [D1.2.2](#) for details.

Other accessories can be found on specification sheet [D1.2.0](#).

Notes:

- 1 3000K and 3500K only.
- 2 DCCF 200 HAL2700 corrects 3000K color to approximately 2700K and 4000K color to approximately 3400K.
- 3 Compatible with static white versions only; contact factory for optical films to change beam spreads in WarmDim versions.
- 4 MVOLT option can be either phase-dimmed (120V) or 0-10V dimmed; 347V option is 0-10V dimming only.



TRAC-MASTER®

Avant Garde

11W/16W VERTICAL CYLINDER LED

T381L G2

DIRECT CANOPY MOUNT

PERFORMANCE DATA¹

Catalog Number	Input Voltage	Input Watts (Typical)	Lumens	Efficacy (LPW)	Rated Life (Hours)
T381L G2 27K 80CRI PDIM SP	120V	10.5	1142	104	50,000
T381L G2 27K 80CRI PDIM NFL	120V	10.5	1121	102	50,000
T381L G2 27K 80CRI PDIM FL	120V	10.5	1159	105	50,000
T381L G2 27K 80CRI PDIM WFL	120V	10.5	1063	97	50,000
T381L G2 27K 90CRI PDIM SP	120V	10.5	986	90	50,000
T381L G2 27K 90CRI PDIM NFL	120V	10.5	968	88	50,000
T381L G2 27K 90CRI PDIM FL	120V	10.5	1001	91	50,000
T381L G2 27K 90CRI PDIM WFL	120V	10.5	918	83	50,000
T381L G2 30K 80CRI PDIM SP	120V	10.5	1142	104	50,000
T381L G2 30K 80CRI PDIM NFL	120V	10.5	1121	102	50,000
T381L G2 30K 80CRI PDIM FL	120V	10.5	1159	105	50,000
T381L G2 30K 80CRI PDIM WFL	120V	10.5	1063	97	50,000
T381L G2 30K 90CRI PDIM SP	120V	10.5	1007	92	50,000
T381L G2 30K 90CRI PDIM NFL	120V	10.5	989	90	50,000
T381L G2 30K 90CRI PDIM FL	120V	10.5	1022	93	50,000
T381L G2 30K 90CRI PDIM WFL	120V	10.5	937	85	50,000
T381L G2 30K SPW PDIM SP	120V	10.5	1054	96	50,000
T381L G2 30K SPW PDIM NFL	120V	10.5	1034	94	50,000
T381L G2 30K SPW PDIM FL	120V	10.5	1069	97	50,000
T381L G2 30K SPW PDIM WFL	120V	10.5	981	89	50,000
T381L G2 35K 80CRI PDIM SP	120V	10.5	1209	110	50,000
T381L G2 35K 80CRI PDIM NFL	120V	10.5	1187	108	50,000
T381L G2 35K 80CRI PDIM FL	120V	10.5	1227	112	50,000
T381L G2 35K 80CRI PDIM WFL	120V	10.5	1126	102	50,000
T381L G2 35K 90CRI PDIM SP	120V	10.5	1069	97	50,000
T381L G2 35K 90CRI PDIM NFL	120V	10.5	1050	95	50,000
T381L G2 35K 90CRI PDIM FL	120V	10.5	1085	99	50,000
T381L G2 35K 90CRI PDIM WFL	120V	10.5	995	90	50,000
T381L G2 35K SPW PDIM SP	120V	10.5	1080	98	50,000
T381L G2 35K SPW PDIM NFL	120V	10.5	1060	96	50,000
T381L G2 35K SPW PDIM FL	120V	10.5	1096	100	50,000
T381L G2 35K SPW PDIM WFL	120V	10.5	1005	91	50,000
T381L G2 40K 80CRI PDIM SP	120V	10.5	1230	112	50,000
T381L G2 40K 80CRI PDIM NFL	120V	10.5	1208	110	50,000
T381L G2 40K 80CRI PDIM FL	120V	10.5	1249	114	50,000
T381L G2 40K 80CRI PDIM WFL	120V	10.5	1145	104	50,000
T381L G2 40K 90CRI PDIM SP	120V	10.5	1090	99	50,000
T381L G2 40K 90CRI PDIM NFL	120V	10.5	1070	97	50,000
T381L G2 40K 90CRI PDIM FL	120V	10.5	1106	101	50,000
T381L G2 40K 90CRI PDIM WFL	120V	10.5	1015	92	50,000
T381L G2 WDIM HALR 90CRI SP (Full-On)	120V	16.1	1074	68	50,000
T381L G2 WDIM HALR 90CRI NFL (Full-On)	120V	16.1	1128	71	50,000
T381L G2 WDIM HALR 90CRI FL (Full-On)	120V	16.1	1067	68	50,000
T381L G2 WDIM HALR 90CRI WFL (Full-On)	120V	16.1	1085	69	50,000

Notes:
¹ Performance data, including Rated Life, is based on measurements of an individual fixture operating at 120V in a 25°C ambient.

ELECTRICAL DATA

	Static White		
Input Voltage	120V	277V	347V
Input Wattage (typ.)	10.5	10.5	11.7
Input Current (max.)	0.10A	0.04A	0.05A
Power Factor	>0.99	>0.96	>0.78
T.H.D.	<10%	<20%	<30%

	WarmDim		
Input Voltage	120V	277V	347V
Input Wattage (typ.)	16.1	16.6	17.4
Input Current (max.)	0.15A	0.07A	0.07A
Power Factor	>0.99	>0.96	>0.84
T.H.D.	<10%	<20%	<30%



TRAC-MASTER®

Avant Garde

11W/16W VERTICAL CYLINDER LED

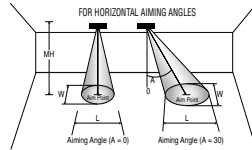
T381L G2

DIRECT CANOPY MOUNT

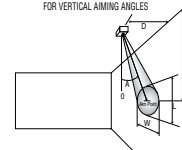
PHOTOMETRICS

CBCP • Centerbeam candlepower
FC • Footcandles at beam center (aim point)

In vertical aiming applications, aim point (X) is determined by dividing distance from the wall (D) by the tangent of the desired aim angle (A) (0.5774 for 30°, 1.0 for 45°, 1.732 for 60°).



Horizontal Aiming Angles



Vertical Aiming Angles



Static White Fixture	Beam Type	Beam Spread	Rated Life	CBCP	0°			30°			30°			45°			60°								
					MH	FC	L W	FC	L W	D	FC	X L W	FC	X L W	D	FC	X L W								
Vertical Cylinder 11W LED 30K, 80CRI Spot	SP	16°	50000	10952	6	304	1.7	1.7	198	2.2	1.9	3	152	5.2	3.6	1.7	430	3.0	1.7	1.2	6	198	3.5	2.2	1.9
					8	171	2.2	2.2	111	3.0	2.6	4	86	6.9	4.7	2.2	242	4.0	2.3	1.6	8	111	4.6	3.0	2.6
					10	110	2.8	2.8	71	3.7	3.2	5	55	8.7	5.9	2.8	155	5.0	2.8	2.0	10	71	5.8	3.7	3.2
					12	76	3.4	3.4	49	4.5	3.9	6	38	10.4	7.1	3.4	108	6.0	3.4	2.4	12	49	6.9	4.5	3.9
14	56	3.9	3.9	36	5.2	4.5	7	28	12.1	8.3	3.9	79	7.0	4.0	2.8	14	36	8.1	5.2	4.5					
Vertical Cylinder 11W LED 30K, 80CRI Narrow Flood	NFL	26°	50000	4637	4	290	1.9	1.9	188	2.5	2.1	2	145	3.5	4.4	1.9	410	2.0	2.0	1.3	4	188	2.3	2.5	2.1
					6	129	2.8	2.8	84	3.8	3.2	3	64	5.2	6.7	2.8	182	3.0	3.0	2.0	6	84	3.5	3.8	3.2
					8	72	3.7	3.7	47	5.1	4.3	4	36	6.9	8.9	3.7	102	4.0	3.9	2.6	8	47	4.6	5.1	4.3
					10	46	4.7	4.7	30	6.3	5.4	5	23	8.7	11.1	4.7	66	5.0	4.9	3.3	10	30	5.8	6.3	5.4
12	32	5.6	5.6	21	7.6	6.4	6	16	10.4	13.3	5.6	46	6.0	5.9	3.9	12	21	6.9	7.6	6.4					
Vertical Cylinder 11W LED 30K, 80CRI Flood	FL	38°	50000	2693	4	168	2.7	2.7	109	3.8	3.2	1	337	1.7	4.2	1.4	952	1.0	1.5	1.0	3	194	1.7	2.8	2.4
					5	108	3.4	3.4	70	4.7	3.9	2	84	3.5	8.4	2.7	238	2.0	3.1	1.9	4	109	2.3	3.8	3.2
					6	75	4.1	4.1	49	5.7	4.7	3	37	5.2	12.6	4.1	106	3.0	4.6	2.9	5	70	2.9	4.7	3.9
					7	55	4.8	4.8	36	6.6	5.5	4	21	6.9	16.8	5.5	60	4.0	6.2	3.9	6	49	3.5	5.7	4.7
8	42	5.5	5.5	27	7.6	6.3	5	13	8.7	21.0	6.8	38	5.0	7.7	4.8	7	36	4.0	6.6	5.5					
Vertical Cylinder 11W LED 30K, 80CRI Wide Flood	WFL	51°	50000	1304	2	326	1.9	1.9	212	2.7	2.2	1.0	163	1.7	11.5	1.9	461	1.0	2.4	1.3	2	212	1.2	2.7	2.2
					3	145	2.8	2.8	94	4.1	3.3	1.5	72	2.6	17.2	2.8	205	1.5	3.7	2.0	3	94	1.7	4.1	3.3
					4	82	3.8	3.8	53	5.4	4.4	2.0	41	3.5	22.9	3.8	115	2.0	4.9	2.7	4	53	2.3	5.4	4.4
					5	52	4.7	4.7	34	6.8	5.5	2.5	26	4.3	**	4.7	74	2.5	6.1	3.3	5	34	2.9	6.8	5.5
6	36	5.7	5.7	24	8.2	6.5	3.0	18	5.2	**	5.7	51	3.0	7.3	4.0	6	24	3.5	8.2	6.5					

**Due to steep aiming angle, length of beam extends beyond 25'.

CRI/CCT Multiplier		
CRI	CCT	Multiplier
80	27K	1.00
	30K	1.00
	35K	1.06
	40K	1.08
90	27K	0.86
	30K	0.82
	35K	0.94
	40K	0.95
SPW	30K	0.92
	35K	0.95



TRAC-MASTER®

Avant Garde

11W/16W VERTICAL CYLINDER LED

T381L G2

DIRECT CANOPY MOUNT

PHOTOMETRICS

WarmDim Fixture	Beam Type	Beam Spread	Rated Life	CBCP	0°				30°			30°					45°				60°				
					MH	FC	L	W	FC	L	W	D	FC	X	L	W	FC	X	L	W	D	FC	X	L	W
Vertical Cylinder 16W LED WarmDim Spot	SP	20°	50000	5239	6	146	2.1	2.1	95	2.8	2.4	3	73	5.2	4.6	2.1	206	3.0	2.1	1.5	6	95	3.5	2.8	2.4
					8	82	2.8	2.8	53	3.7	3.2	4	41	6.9	6.1	2.8	116	4.0	2.8	2.0	8	53	4.6	3.7	3.2
					10	52	3.5	3.5	34	4.7	4.0	5	26	8.7	7.6	3.5	74	5.0	3.6	2.4	10	34	5.8	4.7	4.0
					12	36	4.1	4.1	24	5.6	4.8	6	18	10.4	9.1	4.1	51	6.0	4.3	2.9	12	24	6.9	5.6	4.8
14	27	4.8	4.8	17	6.5	5.6	7	13	12.1	10.6	4.8	38	7.0	5.0	3.4	14	17	8.1	6.5	5.6					
Vertical Cylinder 16W LED WarmDim Narrow Flood	NFL	23°	50000	4560	4	285	1.6	1.6	185	2.2	1.8	2.0	143	3.5	3.6	1.6	403	2.0	1.7	1.1	4	185	2.3	2.2	1.8
					6	127	2.4	2.4	82	3.2	2.8	2.5	91	4.3	4.5	2.0	258	2.5	2.1	1.4	6	82	3.5	3.2	2.8
					8	71	3.2	3.2	46	4.3	3.7	3.0	63	5.2	5.4	2.4	179	3.0	2.5	1.7	8	46	4.6	4.3	3.7
					10	46	4.0	4.0	30	5.4	4.6	3.5	47	6.1	6.4	2.8	132	3.5	2.9	2.0	10	30	5.8	5.4	4.6
12	32	4.8	4.8	21	6.5	5.5	4.0	36	6.9	7.3	3.2	101	4.0	3.3	2.3	12	21	6.9	6.5	5.5					
Vertical Cylinder 16W LED WarmDim Flood	FL	35°	50000	2269	4	142	2.5	2.5	92	3.5	2.9	1.0	284	1.7	3.6	1.3	802	1.0	1.4	0.9	3	164	1.7	2.6	2.2
					5	91	3.1	3.1	59	4.3	3.6	1.5	126	2.6	5.3	1.9	357	1.5	2.1	1.3	4	92	2.3	3.5	2.9
					6	63	3.8	3.8	41	5.2	4.3	2.0	71	3.5	7.1	2.5	201	2.0	2.8	1.8	5	59	2.9	4.3	3.6
					7	46	4.4	4.4	30	6.0	5.1	2.5	45	4.3	8.9	3.1	128	2.5	3.5	2.2	6	41	3.5	5.2	4.3
8	35	5.0	5.0	23	6.9	5.8	3.0	32	5.2	10.7	3.8	89	3.0	4.2	2.7	7	30	4.0	6.0	5.1					
Vertical Cylinder 16W LED WarmDim Wide Flood	WFL	54°	50000	1196	2	299	2.0	2.0	194	2.9	2.3	1.0	150	1.7	17.2	2.0	423	1.0	2.7	1.4	2	194	1.2	2.9	2.3
					3	133	3.0	3.0	86	4.4	3.5	1.5	66	2.6	**	3.0	188	1.5	4.1	2.1	3	86	1.7	4.4	3.5
					4	75	4.0	4.0	49	5.9	4.7	2.0	37	3.5	**	4.0	106	2.0	5.4	2.9	4	49	2.3	5.9	4.7
					5	48	5.1	5.1	31	7.4	5.8	2.5	24	4.3	**	5.1	68	2.5	6.8	3.6	5	31	2.9	7.4	5.8
6	33	6.1	6.1	22	8.8	7.0	3.0	17	5.2	**	6.1	47	3.0	8.1	4.3	6	22	3.5	8.8	7.0					

**Due to steep aiming angle, length of beam extends beyond 25'.