



Project: _____

Fixture Type: _____

Location: _____

Contact/Phone: _____

JUNO SLIMFORM™ LED IC RATED LED NEW CONSTRUCTION JUNCTION BOX SURFACE MOUNT DOWNLIGHT



FOR INSTALLATION INTO
FIRE RATED CEILING ASSEMBLIES
IC1JB JSF

PRODUCT DESCRIPTION

IC LED Air-Loc® new construction junction box housing with energy efficient Juno SlimForm™ LED round surface mount trim for a complete downlight solution in multiple sizes 7" to 13" • May be installed in maximum 2 hour fire-rated ceiling assemblies per International Building Code Section 714 • Can be completely covered with insulation • Dimmable • Optional finish trims and shrouds available for custom, designer look similar to standard recessed downlights • Designed to provide 50,000 hours of life • 5 year limited warranty.



PRODUCT SPECIFICATIONS – TRIM

Surface Mount Trim Shallow, less than 1", solid ring with white finish • Non conductive fixture for shower light applications • Optional, field installable finish trims available for 7" version to change the exterior finish of fixture • Optional, field installable decorative baffle and cone shrouds for 7" version provides the aesthetic and source shielding similar to the experience of a fully recessed downlight.

Optics Light guide technology combined with diffusing lens conceals the LEDs from direct view and provides uniform lens luminance.

LED Light Engine LEDs mounted directly to heatsink designed to provide superior thermal management and ensure long life • 2700K, 3000K, 3500K or 4000K LED color temperature • LEDs binned for 4-step MacAdam ellipse color consistency • 90 CRI minimum.

LED Driver Choice of dedicated 120 volt (120) driver or universal voltage (MVOLT) driver that accommodates input voltages from 120-277 volts AC at 50/60Hz • Power factor > 0.9 at 120V input • 120 volt driver is dimmable with the use of most incandescent, magnetic low voltage and electronic low voltage wall box dimmers • Universal voltage driver is dimmable with the use of most 0-10V wall box dimmers • External driver is only available on 7" model • For a list of compatible dimmers, see [JUNOSLIMFORM-DIM](#).

Electrical Connections Fixture provided with leads for direct wire connection.

Life Rated for 50,000 hours at >70% lumen maintenance.

PRODUCT SPECIFICATIONS – HOUSING

Junction Box Housing Designed for use in IC (insulated ceiling) or non-IC construction • Rough-in section (junction box, bar hangers) fully assembled for ease of installation • Painted steel 3-1/2" deep 4" square junction box • Provided with (4) 1/2"-3/4" concentric, (2) 1/2", (4) 3/4" and (2) 1" knockouts • cETLus listed for through-branch wiring, maximum 8 No. 12 AWG 90°C branch circuit conductors (4 in and 4 out).

Hardware Ships with retrofit mounting bracket, trim ring and quick connect whip; not required for JSF installation.

INSTALLATION

The IC1JB junction box housing must be installed per the International Building Code Section 714 guidelines to maintain up to a 2 hour ceiling fire rating. Precise ceiling cutout required. For use with 1/2" - 1-1/4" ceiling thickness.

Mounting option JSFMTGPLT 4X4 is required for installation.

Real Nail® 3 Bar Hangers Telescoping Real Nail 3 system permits quick placement of housing anywhere within 24" O.C. joists or suspended ceilings • Bars scored in two locations for fast, clean breaking, allowing housing installation in tight applications • Captive bugle-headed ring shank nail for quick one-step installation and easy removal with claw hammer for fixture relocation • Integral T-bar notch for suspended ceilings • Locking set screw to lock junction box housing in position • Design covered under US Patent D552,969.

LISTINGS

Labels ENERGY STAR® certified • Certified to the high efficacy requirements of California T24 JA8-2016 • Assembly ETL listed to UL1598 for US and Canadian through branch wiring, damp location • ETL listed to UL514A • Suitable for wet locations (covered ceilings).

Testing All reports are based on published industry procedures; actual performance may differ as a result of the end-user environment and applications. All values are design or typical values, measured under laboratory conditions at 25 °C.

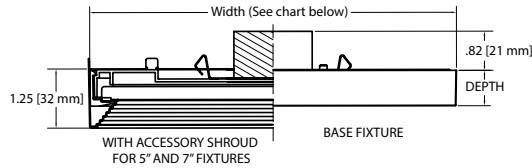
Warranty 5-year limited warranty. This is the only warranty provided and no other statements in this specification sheet create any warranty of any kind. All other express and implied warranties are disclaimed. Complete warranty terms located at: www.acuitybrands.com/support/warranty/terms-and-conditions

Note: Actual performance may differ as a result of end-user environment and application. All values are design or typical values, measured under laboratory conditions at 25 °C. Specifications subject to change without notice.

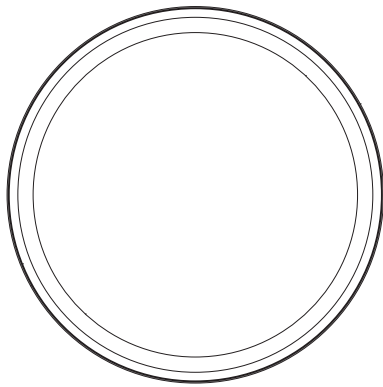
JUNO SLIMFORM™ LED IC RATED LED NEW CONSTRUCTION JUNCTION BOX SURFACE MOUNT DOWNLIGHT FOR INSTALLATION INTO FIRE RATED CEILING ASSEMBLIES IC1JB JSF

DIMENSIONS

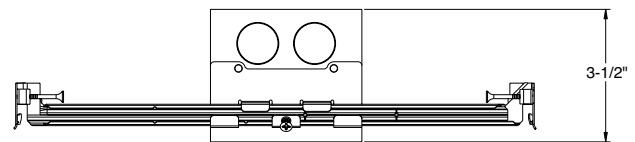
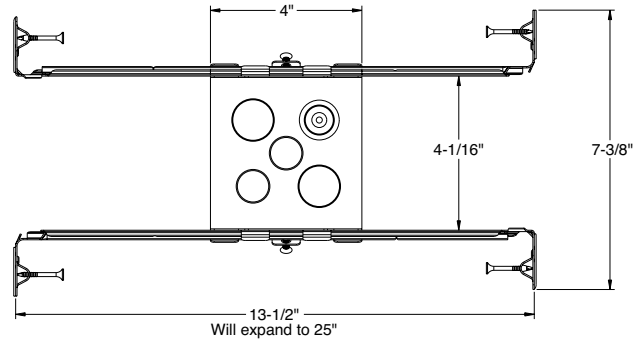
JSF TRIM



External driver available on 7" model only.



IC1JB



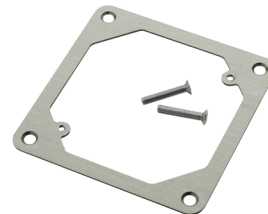
4 1/4" SQUARE CEILING CUTOUT MAX

ROUND SPECIFICATIONS

	Width	Depth
JSF 7IN	7.77 (19.74)	0.75 (1.91)
JSF 11IN	11.08 (28.14)	0.9 (2.29)
JSF 13IN	13.05 (33.15)	0.9 (2.29)

All dimensions are in inches (centimeters) unless otherwise indicated.

JSFMTGPLT 4X4 (Required for JSF installation)



JSF PERFORMANCE DATA

	JSF 7IN		JSF 11IN		JSF 13IN	
	120V	MVOLT	120V	MVOLT	120V	MVOLT
Lumens	1000	1000	1300	1300	1800	1800
CRI	90CRI		90CRI		90CRI	
CCT	27K, 30K, 35K, 40K		27K, 30K, 35K, 40K		27K, 30K, 35K, 40K	
Voltage	120V	120V-277V	120V	120V-277V	120V	120V-277V
Input Power	13W	13W	15W	15W	20W	20W
Input Current	150MA	60MA	180MA	80MA	240MA	110MA
Frequency	50/60Hz		50/60Hz		50/60Hz	
Power Factor	>0.9		>0.9		>0.9	

JUNO SLIMFORM™ LED IC RATED LED NEW CONSTRUCTION JUNCTION BOX SURFACE MOUNT DOWNLIGHT FOR INSTALLATION INTO FIRE RATED CEILING ASSEMBLIES IC1JB JSF

ORDERING INFORMATION

Example: IC1JB JSF 7IN 10LM SWW5 90CRI 120 FRPC WH JSFMTGPLT

Junction box and trim can be ordered together or separate, but will always ship separately.

Series	Trim Series	Size/Lumens	Color Temperature	CRI
IC1JB New Construction Junction Box for Fire Rated Ceiling Assemblies	JSF SlimForm Surface Mount Downlight - Round	7IN 10LM 7", 1000 Lumens 11IN 13LM 11", 1300 Lumens 13IN 18LM 13", 1800 Lumens	SWW5 Switchable White (2700K, 3000K, 3500K, 4000K, 5000K)	90CRI 90+ CRI

Voltage/Driver	Finish	Mounting Option	Emergency Battery
120 FRPC Dedicated 120V, Forward Reverse Phase Dimming MVOLT ZT Universal Voltage 120V-277V, 0-10V Dimming	WH White	JSFMTGPLT SlimForm mounting plate for installation to 4X4 junction box	EM ^{1,2†} Battery Back-up Option EBX Empty Back Box for Aesthetics

JSFMTGPLT 4X4 required for use of IC1JB with JSF.

†: EM Battery Back-up option is not ENERGY STAR® certified.

Note:

- Emergency battery is only available with MVOLT ZT.
- Emergency battery available with 11IN and 13IN only.

ACCESSORIES

TRIM – Optional, field installable finish trim rings available to change the exterior finish of fixture.

Example: JSFTRIM 7IN BL

Series	Size	Finish
JSFTRIM SlimForm Accessory-Trim	7IN 7 inches	BL Black BZ Bronze SN Satin Nickel



**TRIM
Shown in Satin
Nickel**

Remote Emergency IOTA Inverters for Field Installation

Inverter Part Number	Description
IIS 25.I	Emergency Inverter, 25W output
IIS 50.I	Emergency Inverter, 50W output
IIS 35.HE	Emergency Inverter, 35W output, High Efficiency (meets CA T20 efficiency requirement)

Must be ordered on a separate line. For Emergency Battery related questions contact us at techsupport@iotaengineering.com

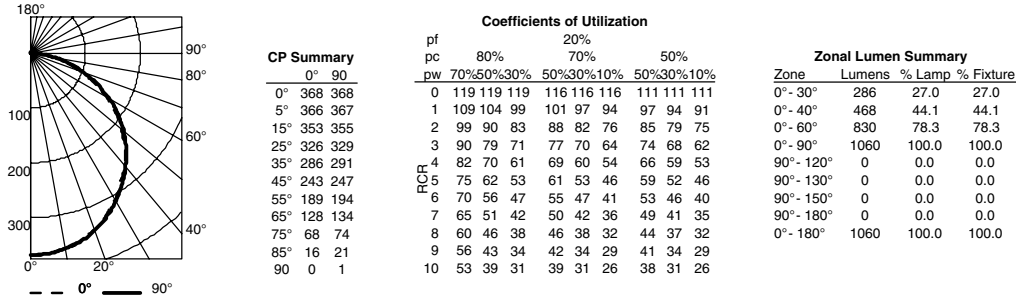
JUNO SLIMFORM™ LED IC RATED LED NEW CONSTRUCTION JUNCTION BOX SURFACE MOUNT DOWNLIGHT FOR INSTALLATION INTO FIRE RATED CEILING ASSEMBLIES

IC1JB JSF

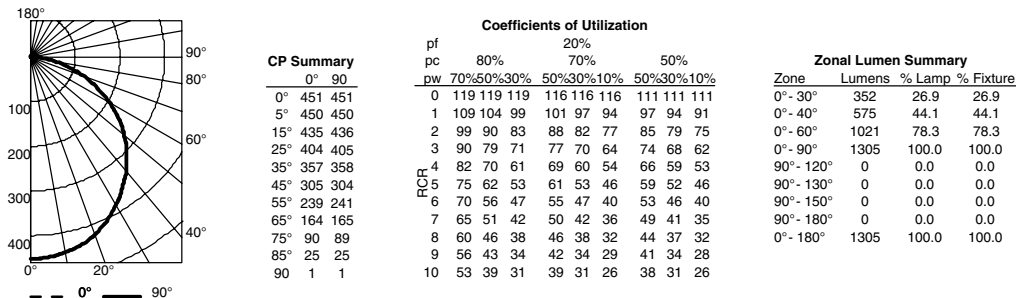
PHOTOMETRICS

Distribution Curve Distribution Data Coefficient of Utilization Illuminance Data at 30" Above Floor for a Single Luminaire

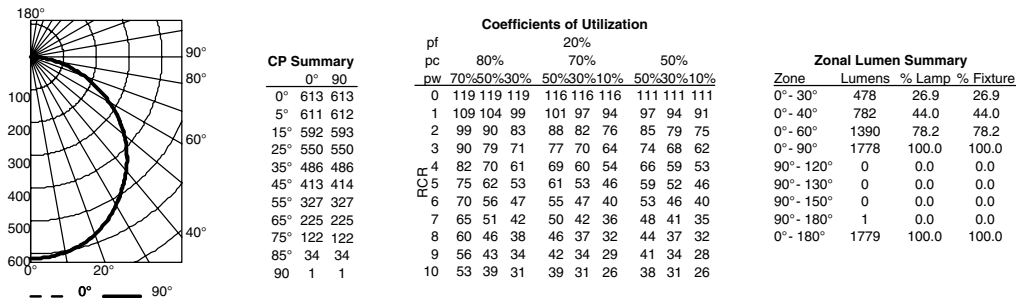
JSF 71IN 27K, 2700K LEDs, input watts: 12.8, delivered lumens: 1060, LM/W = 82.8, test no. ISF 33600, tested in accordance to IESNA LM-79.



JSF 111IN 27K, 2700K LEDs, input watts: 15.2, delivered lumens: 1305, LM/W = 85.9, test no. ISF 33661, tested in accordance to IESNA LM-79.



JSF 131IN 27K, 2700K LEDs, input watts: 20.2, delivered lumens: 1779, LM/W = 88, test no. ISF 33663, tested in accordance to IESNA LM-79.



For 30K fixtures, use 1.02 multiplier; For 35K fixtures, use 1.03 multiplier, For 40K fixtures, use 1.07 multiplier.