



TWR LED

The New and Improved

Elevator Pitch

The Lithonia Lighting® TWR LED wall packs combine the power of the latest generation of LEDs in a popular and classic day-form to provide exceptional energy savings. These wall packs give ultimate versatility to both the distributor and contractor by offering 18 configurations in one product.

The luminaires are very energy efficient, capable of replacing 70 - 400W metal halide luminaires while saving up to 86% in energy costs. Offering an expected service life of more than 20 years, these LED luminaires eliminate frequent lamp and ballast replacements associated with traditional technologies. The Adjustable Light Output (ALO) and switchable color temperature (SWW2) features allow the contractor to set the light output and color temperature during installation, to a level perfectly suited for the job site.

The winning combination of feature-rich TWR and performance/styling focused TWX family, will give customers the ability to address both their Renovation and New Construction needs with solutions from Lithonia Lighting.

Non-Cutoff Wall Pack Positioning

TWR



- SuperSku flexibility ideal for **RENOVATION**
- Familiar legacy HID look with upgraded performance and features
- Trusted Borosilicate Glass Lens
- Dusk-to-Dawn photocell included
- UVOLT (120V-347V) standard
- DLC 5.1 Premium | IP65 Rated



TWX



- Low-profile form factor well-adopted and perfect for **NEW CONSTRUCTION**
- Best-in-class forward throw
- Three sizes deliver 2,950 to 13,850 lumens
- Glass or Polycarbonate Lens options
- Multiple finishes available
- Made in North America

This winning combination will give us the ability to address both the Renovation and New Construction markets!



The New and Improved TWR Solution

- 18 SKUs in ONE!
- 70W – 400W HID replacement
- No more go-backs



A Strategy That Works



**Adjustable Lumen
Output**

Low, Medium, High



**Switchable
CCT**

3000K, 4000K, 5000K



**Simple
Controls**

Photocell
On/Off

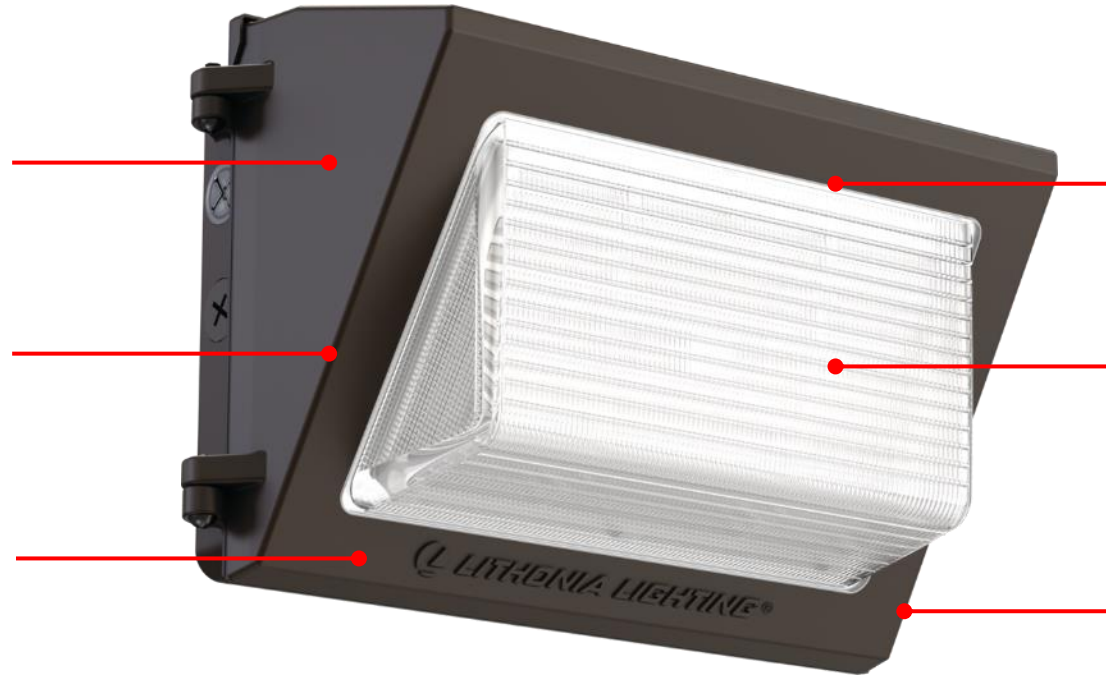
SUPERSKUs

Construction Overview

DLC 5.1 Premium Listed to maximize rebate dollars

Traditional form factor to match legacy HID-style wall packs

Rugged die-cast aluminum housing in dark bronze finish



Discrete LED array for even illumination

Durable Borosilicate Glass Lens

Molded silicone gasket for IP65 rating

The New and Improved TWR Solution



TWR1

- ALO 2,300 | 5,300 | 8,500
- Replace 70W – 250W HID
- UVOLT (120-347V)



TWR2

- ALO 8,200 | 12,100 | 16,100
- Replace 250W – 400W HID
- UVOLT (120-347V)

Factory Default Settings

ALO



High

CCT

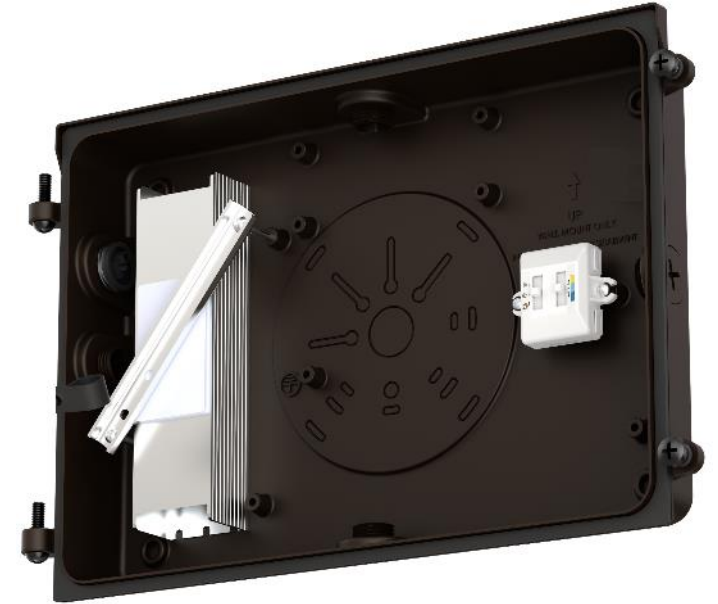


4000K

PHOTOCELL



ON



Ordering Details

Catalog Number	Ci-code	UPC	Lumens	Wattage	CCT	Voltage	Finish	Pallet Qty
TWR1 LED ALO SWW2 UVOLT PE DDBTXD	*280GWW	196183389947	Adjustable 2,300 – 8,500	16W - 59W	Switchable 3000K/4000K/5000K	120-347V	Textured Dark Bronze	50
TWR2 LED ALO SWW2 UVOLT PE DDBTXD	*280GX5	196183390028	Adjustable 8,200 – 16,100	55W - 112W	Switchable 3000K/4000K/5000K	120-347V	Textured Dark Bronze	40

Thank You