

E V O<sup>®</sup>

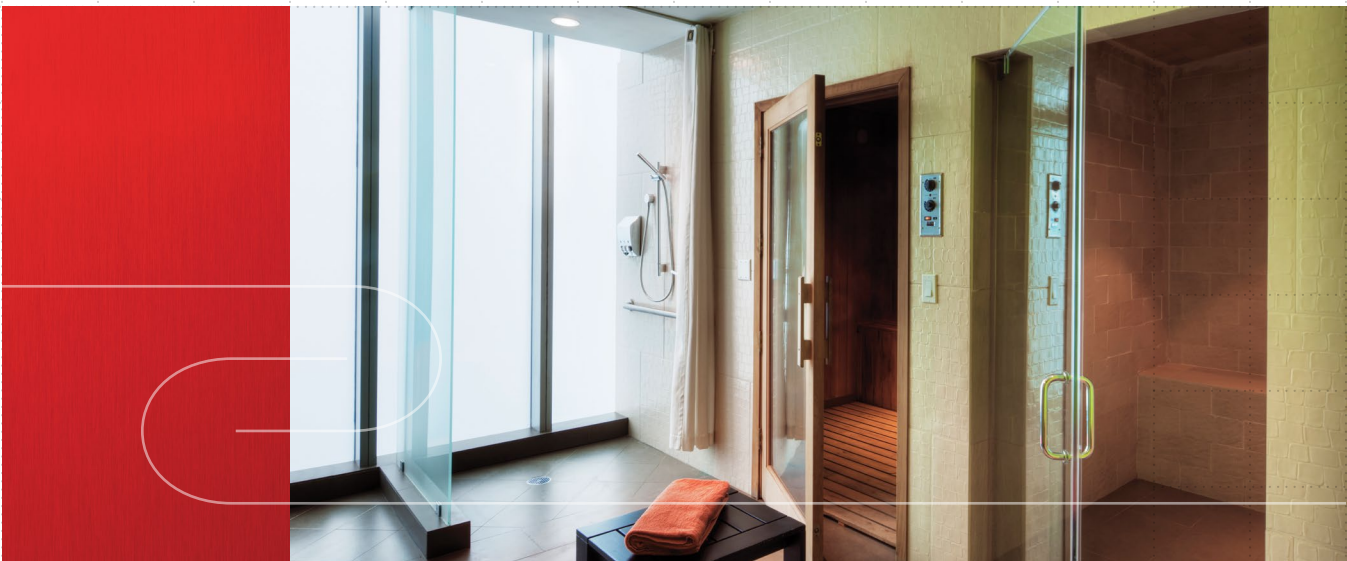
## 4" & 6" SHOWER DOWNLIGHTS



gotham<sup>®</sup>



EVO4SH



Downlight

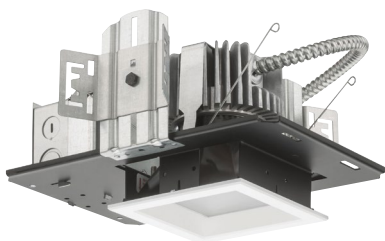
Evo Distributions

### Solid-state for the shower.

Solid-state for the shower. For projects that call for non-conductive, wet-location luminaires we've created the Evo<sup>®</sup> LED shower light

- "Dead-front" trim design suitable for a wide range of applications and codes requiring a non-conductive lens assembly.
- IP66 rating ensures luminaires provide ingress protection to the ceiling and protects from water spray and vapor.
- Easy to clean, wipe-down trims are available in both flush as well as regressed lens designs.

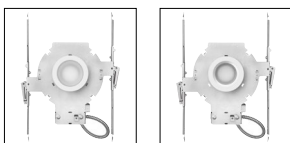
## 4" & 6" SHOWER DOWNLIGHTS



EVO6SQSH

- **DELIVERED LUMENS** — 1000 up to 4000
- **COLOR TEMPERATURES** — 2700K, 3000K, 3500K, 4000K
- **EMERGENCY BACKUP** — Battery pack with remote test switch or generator transfer device options available
- **CONTROL PERFORMANCE** — 0-10V dimming to 10%, 1% or less than 1% and DALI, and nLight enabled options
- **CRI** — 85 typical, 90+ CRI option available
- **APERTURES** — Round & Square

### lens options

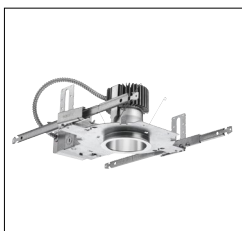


Flush

Regressed

### Gotham Family. Solid-state for wet locations.

The extensive portfolio of Gotham products provides consistent, tailored distributions across downlight, wallwash, and cylinder form factors. Additionally, special application products include decorative, shower and vandal resistant trim options. Special healthcare application versions are also available which include patient room, surgical and MRI downlights. IP66, NSF2 Non-Food/Splash Zone and MIL-STD-461F rated. The Gotham family is perfect for any general illumination application.



Downlight



Patient Room



MRI



Cylinder

For more information or complete specifications go to [www.gothamlighting.com](http://www.gothamlighting.com) or contact your local Acuity Brands Representative.



A+ Certified solutions from Acuity Brands help you quickly and confidently select and implement lighting systems, for indoor or outdoor applications, that are both compatible and consistent.

Go to [www.acuitybrands.com/solutions/a-certified](http://www.acuitybrands.com/solutions/a-certified) or contact your local Acuity Brands representative for more information.