

**READ AND FOLLOW ALL SAFETY INSTRUCTIONS!**  
**SAVE THESE INSTRUCTIONS AND DELIVER TO OWNER AFTER INSTALLATION**

- To reduce the risk of death, personal injury or property damage from fire, electric shock, falling parts, cuts/abrasions, and other hazards please read all warnings and instructions included with and on the fixture box and all fixture labels.
- Before installing, servicing, or performing routine maintenance upon this equipment, follow these general precautions.
- Installation and service of luminaires should be performed by a **qualified licensed electrician**.
- Maintenance of the luminaires should be performed by person(s) familiar with the luminaires' construction and operation and any hazards involved. Regular fixture maintenance programs are recommended.
- It will occasionally be necessary to clean the outside of the refractor/lens. Frequency of cleaning will depend on ambient dirt level and minimum light output which is acceptable to user. Refractor/lens should be washed in a solution of warm water and any mild, non-abrasive household detergent, rinsed with clean water and wiped dry. Should optical assembly become dirty on the inside, wipe refractor/lens and clean in above manner, replacing damaged gaskets as necessary.
- **DO NOT INSTALL DAMAGED PRODUCT!** This luminaire has been properly packed so that no parts should have been damaged during transit. Inspect to confirm. Any part damaged or broken during or after assembly should be replaced.
- Recycle: For information on how to recycle LED electronic products, please visit [www.epa.gov](http://www.epa.gov).
- These instructions do not purport to cover all details or variations in equipment nor to provide every possible contingency to meet in connection with installation, operation, or maintenance. Should further information be desired, or should particular problems arise which are not covered sufficiently for the purchaser's or owner's purposes, this matter should be referred to Acuity Brands Lighting, Inc.



**WARNING**  
**RISK OF ELECTRIC SHOCK**

- ✓ Disconnect or turn off power before installation or servicing.
- ✓ Verify that supply voltage is correct by comparing it with the luminaire label information.
- ✓ Make all electrical and grounded connections in accordance with the National Electrical Code (NEC) and any applicable local code requirements.
- ✓ All wiring connections should be capped with UL approved recognized wire connectors.



**WARNING**  
**RISK OF BURN**

- ✓ Allow lamp/fixture to cool before handling. Do not touch enclosure or light source.
- ✓ Do not exceed maximum wattage marked on luminaire label.
- ✓ Follow all manufacturer's warnings, recommendations and restrictions for: driver type, burning position, mounting locations/methods, replacement and recycling.



**CAUTION**  
**RISK OF INJURY**

- ✓ Wear gloves and safety glasses at all times when removing luminaire from carton, installing, servicing or performing maintenance.
- ✓ Avoid direct eye exposure to the light source while it is on.



**CAUTION**  
**RISK OF FIRE**

- ✓ Keep combustible and other materials that can burn, away from lamp/lens.
- ✓ Do not operate in close proximity to persons, combustible materials or substances affected by heat or drying.



### CAUTION: RISK OF PRODUCT DAMAGE

- ✓ Never connect components under load.
- ✓ Do not mount or support these fixtures in a manner that can cut the outer jacket or damage wire insulation.
- ✓ Controls for dimming, auto-sensing, or remote control of a luminaire that are not factory-wired to the luminaire must be checked for compatibility with the luminaire prior to installation. LED fixtures must be powered directly off a switched circuit.
- ✓ Unless individual product specifications deem otherwise: Do not restrict fixture ventilation. Allow for some volume of airspace around fixture. Avoid covering LED fixtures with insulation, foam, or other material that will prevent convection or conduction cooling.
- ✓ Unless individual product specifications deem otherwise: Do not exceed fixtures maximum ambient temperature.
- ✓ Only use fixture in its intended location.
- ✓ LED products are Polarity Sensitive. Ensure proper Polarity before installation.
- ✓ Electrostatic Discharge (ESD): ESD can damage LED fixtures. Personal grounding equipment must be worn during all installation or servicing of the unit.
- ✓ Do not touch individual electrical components as this can cause ESD, shorten lamp life, or alter performance.
- ✓ Some components inside the fixture may not be serviceable. In the unlikely event your unit may require service, stop using the unit immediately and contact an ABL representative for assistance.
- ✓ Always read the fixtures complete installation instructions prior to installation for any additional fixture specific warnings.
- ✓ Always ensure that the electrical distribution system is up to NEC (and any applicable local code) requirements.
- ✓ Verify that power distribution system has proper grounding. Lack of proper earth ground can lead to fixture failure and may void warranty.

**Failure to follow any of these instructions could void product warranties. For a complete listing of product Terms and Conditions, please visit [www.acuitybrands.com](http://www.acuitybrands.com).**

#### Our Brands

Indoor/Outdoor  
Lithonia Lighting  
Carandini  
Holophane  
RELOC  
Light Concepts

Indoor Lighting  
Gotham  
Mark Architectural Lighting  
Peerless  
Renaissance Lighting  
Winona Lighting

Outdoor Lighting  
American Electric Lighting  
Antique Street Lamps  
Hydrel  
Tersen

Controls  
DARK TO LIGHT  
LC&D  
ROAM  
Sensor Switch  
Synergy

Daylighting  
Sunoptics

**Acuity Brands Lighting, Inc. assumes no responsibility for claims arising out of improper or careless installation or handling of its products.**

ABL LED General Warnings, Form No. 503.203

© 2010, 2016 Acuity Brands Lighting, Inc. All rights reserved. 12/01/10

### Product Description

The RSX series of luminaires has several mounting options, currently including Square Pole Adapter (SPA), Round Pole Adapter (RPA), an extended RPA and SPA, Mast Arm (MA), Integral Slipfitter (IS), Wall Bracket (WBA), wall bracket with surface conduit box (WBASC), Adjustable Tilt Arm for square and round pole (AASP and AARP), Adjustable Tilt Arm with a wall bracket or surface conduit box (AAWB and AAWSC). Compare the product received with the catalog description listed on the packaging label to be sure you have received the correct merchandise. Also review the materials list in this installation manual against the materials received to ensure nothing is missing.

TOOLS REQUIRED FOR INSTALLATION		
TOOL	USE	OPTION NEEDING TOOL
9/64" Allen wrench	Arm cover screws	RPA/SPA, ERPA/ESPA, IS, AASP/AARP, AAWB/AAWSC
5/32" Allen wrench	Door removal	All (if removing existing arm)
3/16" Allen wrench	Set screws	IS, WBA/WBASC, AAWB/AAWSC
3/8" Allen wrench	Angle adjustment bolt	IS, AASP/AARP, AAWB/AAWSC
1/4" Hex socket	Optional component removal	Optional on all
5/16" Hex socket	Optional component removal	Optional on all
9/16" Hex socket	Luminaire mounting bolts	RPA/SPA, ERPA/ESPA, WBA/WBASC, AASP/AARP, AAWB/AAWSC
5/8" Hex socket	Existing arm removal	All (if removing existing arm)
Flathead screwdriver	NPT coin plug removal	WBASC, AAWSC
Torque wrench	Min. Torque 18 in-lbs. (1.5 ft-lbs.)	All
Torque wrench	Max. Torque 490 in-lbs. (40.8 ft-lbs.)	All

## OLD ARM REMOVAL – ALL ARM REPAIR KITS

**Note:** The following steps describing any removal, repair or re-assembly should be applied to a luminaire that is removed from the pole or other mounting device. Steps should be performed on a flat surface with the luminaire (LED's) facing up and while providing some means of protection to the back surface to prevent damage to painted surfaces. Basic arm removal steps are identical regardless of RSX size, performance package, options, or arm option that is being replaced. Any deviations or option-specific steps will be highlighted.

**Step 1:** Door removal. Loosen all #10 socket cap screws attaching the door to the housing as shown in figure 1. On RSX1, RSX2, and RSX3 there are 6 screws, RSX4 has 8 screws attaching the door to the housing. All screws are designed to be captive. Do not purposely remove them from the door or dispose of them, they are required to reattach the door later.

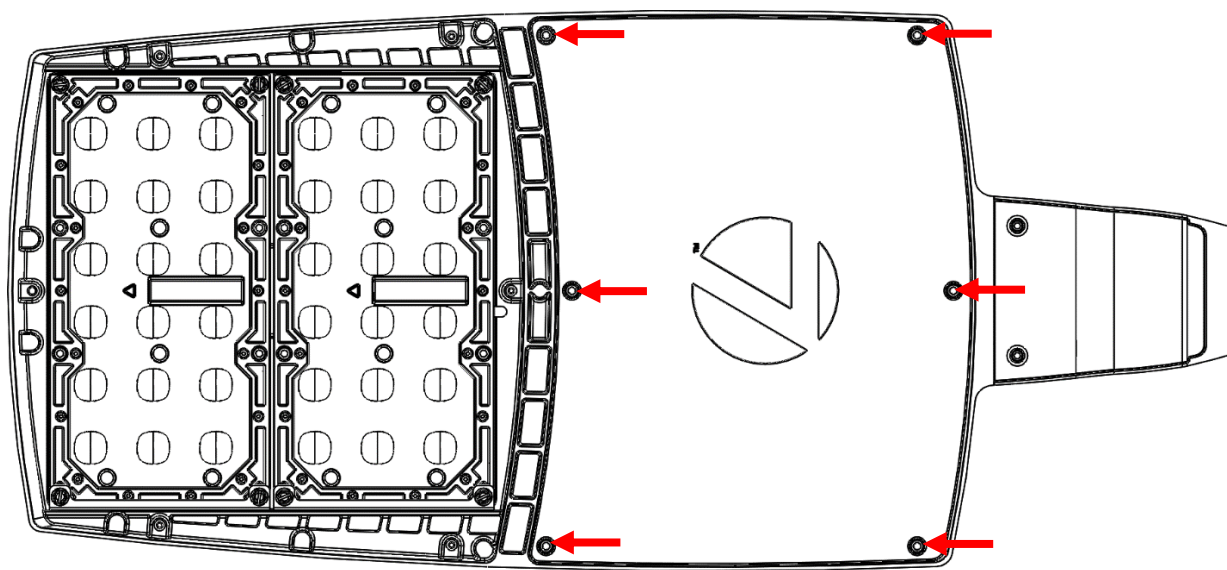


Figure 1 – RSX door screws. RSX2 shown.

**WARNING** - All RSX doors contain a sealing gasket. Do not remove this gasket and do not place the door facing down where debris may stick to the gasket as this may compromise the water-tight seal after the door is reattached. If the gasket becomes loose during remove, gently push the gasket back into the groove of the door – do not stretch the gasket.

**Step 2:** (OPTIONAL) Internal component removal. Depending on luminaire size and configuration, internal electronic components may obstruct the tools required for arm removal on the interior of the luminaire. Loosening and moving the driver will create enough clearance in virtually all cases. The driver can be removed by loosening the screws with a 5/16" hex socket drive. Do not discard any fasteners removed if creating more clearance for arm removal.

**Step 3a:** Luminaires with RPA/SPA & ERPA/ESPA installed only. If removing a RPA or SPA arm from the luminaire, open the arm cover and disconnect the eyeleted ground wires and remove any wire caps.

**Step 3b:** Luminaires with IS or Adjustable Arm installed only. If removing an adjustable mounting arm from the luminaire, loosen the adjustable knuckle with a 3/8" hex bit. Open the cover of the IS/Adjustable arm and remove any wire caps – when the arm is ready to be removed from the housing, the pre-wire will need to be routed back out of the knuckle carefully.

**Step 4:** Using a torque wrench and 5/8" socket, loosen and remove the 2 bolts securing the arm to the housing, shown in figure 2 on the next page. After the bolts have been completely loosened, remove them along with the sealing washers around them and discard.

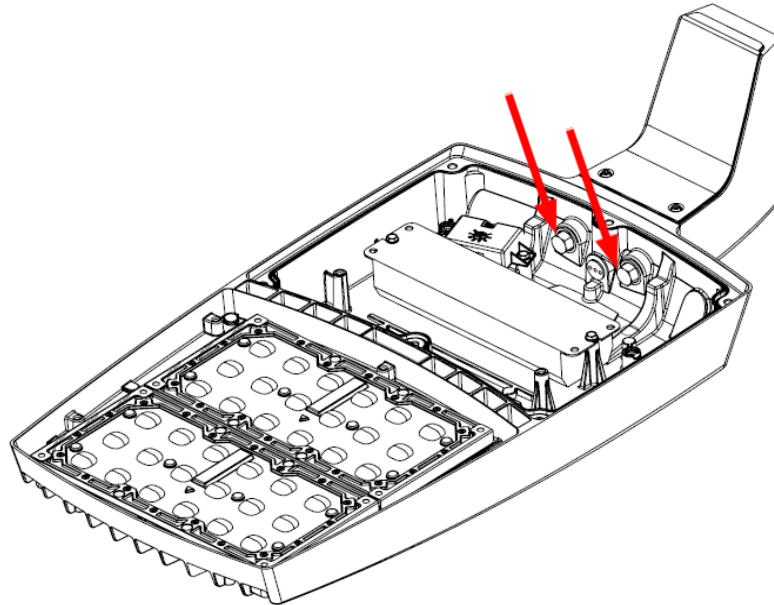


Figure 2 – RSX arm screws. RSX2 shown

**Step 5:** Carefully route the pre-wire out of the existing arm. Do not tug on the wires coming from the luminaire, this may dislodge the wire pass-thru grommet which will compromise the water-tight seal of the luminaire housing. Discard the existing arm and any hardware attached.

**Step 6:** Check the back of the luminaire housing to ensure the arm sealing gasket (figure 3) has not dislodged, been dirtied, or been damaged. If the gasket has been dislodged it can be gently pressed back into the groove in the housing. If the gasket appears dirty or damaged, remove it and replace it with the gasket included with the repair kit. The molded gasket matches the perimeter shape of the groove in the housing and should not be stretched for installation. Simply push the gasket into place with light pressure.

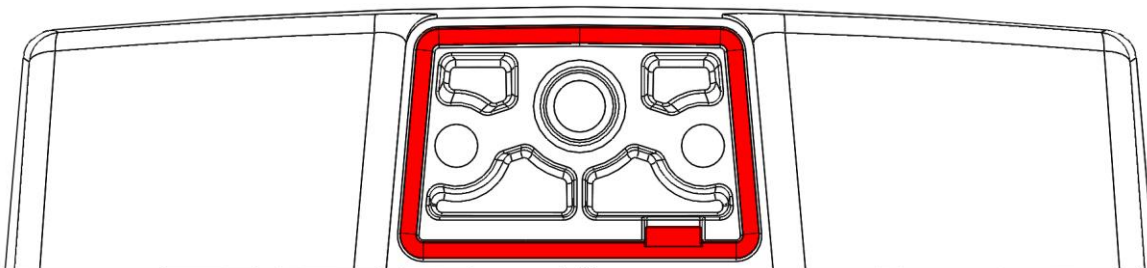


Figure 3 – RSX arm sealing gasket (red)

## SQUARE POLE ADAPTER (SPA), ROUND POLE ADAPTER (RPA), EXTENDED SQUARE POLE ADAPTER (ESPA), & EXTENDED ROUND POLE ADAPTER (REPA) INSTALLATION

### Material list

1. RSX pole arm assembly
2. Replacement RSX arm sealing gasket
3. Pole backing plate
4. Universal pole mount snap nut
5. Universal pole backing plate
6. QTY 2 of 2" long 7/16-14 bolts
7. QTY 2 of 7/16 sealing washers
8. QTY 2 of 3/8-16 bolts (2" long for square poles, 2.5" long for round poles)
9. RPA insert (round pole options only)
10. Ground wire with eyelet and ground screw (not shown)

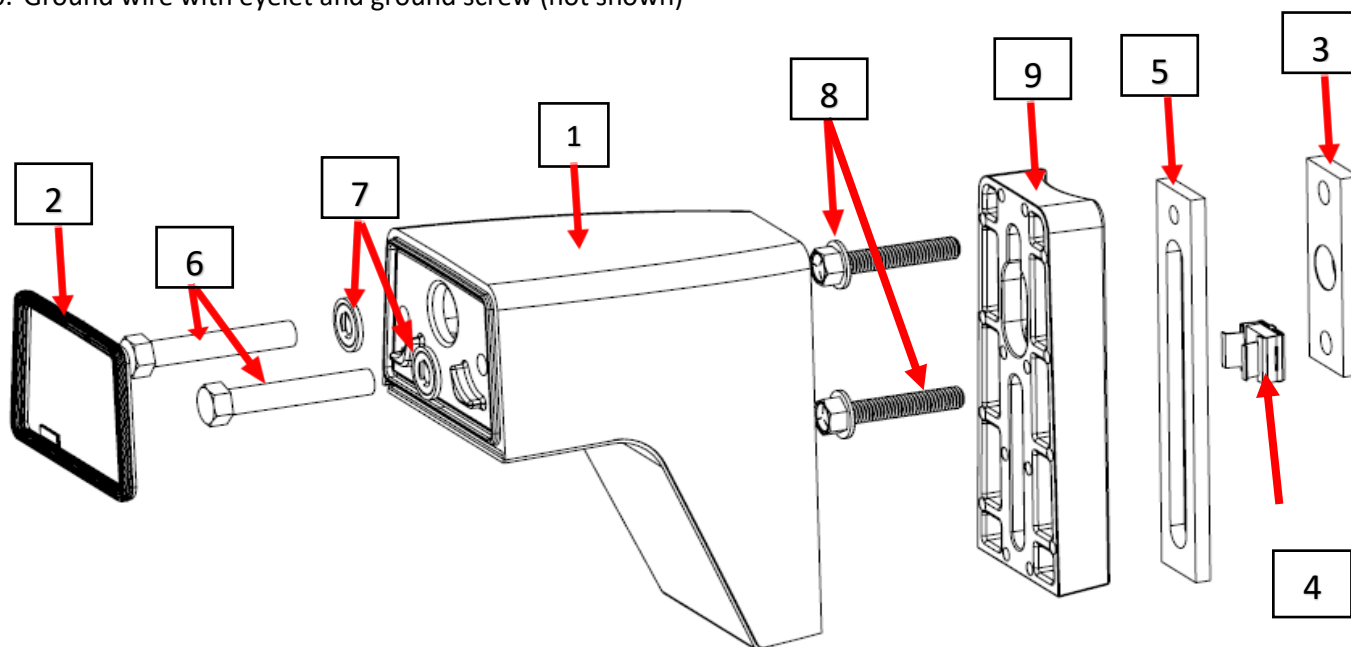


Figure 4 – Pole arm repair kit materials

**Step 1:** If the sealing washers (items #6) included with the repair kit are still loose, insert them onto the 7/16-14 bolts (items #5). Insert the bolts into the thru holes on the housing where the previous bolts were removed from (see figure 2 for reference). With the replacement RSX arm sealing gasket (item #2) in place on the housing, align the new arm assembly and attach it via the new bolts. **Tighten the bolts to 36.7 – 40.3 ft-lbs. (440-490 in-lbs.).**

### WARNING

**FAILURE TO PROPERLY TIGHTEN ARM ATTACHEMENT BOLTS COULD CAUSE LUMINAIRE TO FALL RESULTING IN PROPERTY DAMAGE, SERIOUS INJURY, OR DEATH**



# Installation Instructions

## RSX LED REPAIR KITS

5 year limited warranty

**Step 2:** (OPTIONAL, all configurations) Reinstall any internal component that were removed to create clearance for arm removal/installation. Reinstall any removed screws to 25-30 in-lbs. (2.1 – 2.5 ft-lbs.).

**Step 3:** Reattach the door to the luminaire housing using the door screws that were included with the original luminaire. 2 extra screws are included with all repair kits in case any screws are lost or damaged during luminaire service. Tighten all door screws to 25-30 in-lbs. (2.1 – 2.5 ft-lbs.). Failure to properly tighten the door fasteners may result in loss of watertight seal.

**Step 4:** If attached, remove the cover from the arm. Using the green ground screw, connect the eyeleted ground wire included with the repair kit to the unused boss on the inside of the arm (see figure 5). One of the two bosses should already be in use to connect the ground tether from the arm to the cover. Do not remove the ground tether. Leave the arm cover disconnected, as it will need to be removed for installation to the pole.

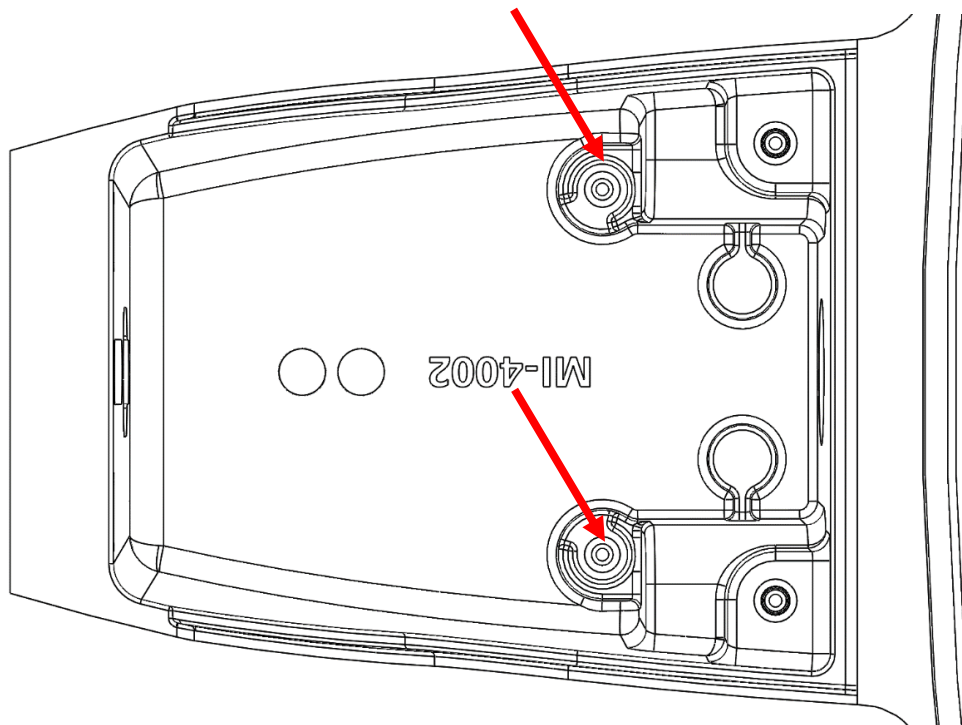


Figure 5 – RSX arm grounding bosses

**Step 5:** Refer to the luminaire installation manual (document IM-459/IM-460, included with luminaire) for final luminaire installation.

## WALL BRACKET (WBA), WALL BRACKET WITH SURFACE CONDUIT (WBASC) INSTALLATION

### Material list

1. RSX pole arm assembly components (see figure 4)
2. Wall mount bracket (WBA only) or Wall mount conduit box (WBASC only), see figure 6a and 6b
3. Wall mount bracket cover with preinstalled gasket, see figure 7
4. Pre-installed conduit plugs (WBASC only)

If the repair kit is for the WBA or WBASC option and there is not already a standard arm attached, start with the previous section for arm Installation to the luminaire, but do not attach the arm cover yet.

**CAUTION:** APPLY A CONTINUOUS BEAD OF WEATHER – PROOF CAULKING BETWEEN MOUNTING BASE PLATE AND WALL TO ENSURE WEATHER-TIGHT INTEGRITY OF ELECTRICAL COMPONENTS (See Fig 13a or 13b)

**Step 1:** Place the base plate in orientation shown in Figures 6a (WBASC) and 6b (WBA) and secure to wall with secure base plate to wall with (4) 1/4" diameter fasteners (not included with luminaire) using the (4) holes located on the outer corners of the base plate. Check the base plate to confirm that it is level and plumb in all directions (See Figure 6b). Note that the WBA and WBASC have slightly different mounting patterns for the 1/4" bolt.

**Step 2:** WBASC OPTION ONLY: With the base plate securely fastened to the wall, remove the desired conduit plug(s) from the base plate using a flat head screwdriver, feed in supply wires, and attach 3/4 NPT conduit pipe.

**Step 3:** Prepare the cover plate by ensuring the factory-installed, black foam gasket is in place on the backside of the cover plate (See Fig 7) NOTE: For the next steps the curved portion of the cover plate should point upwards when mounted to the wall as shown in figure 9

Figure 6a, WBASC ONLY

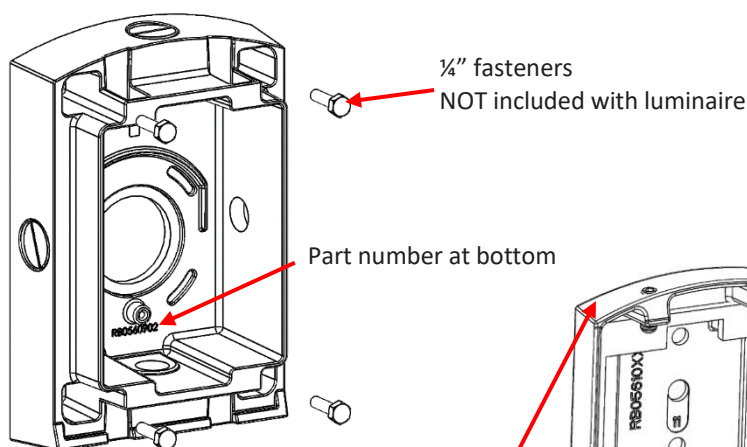
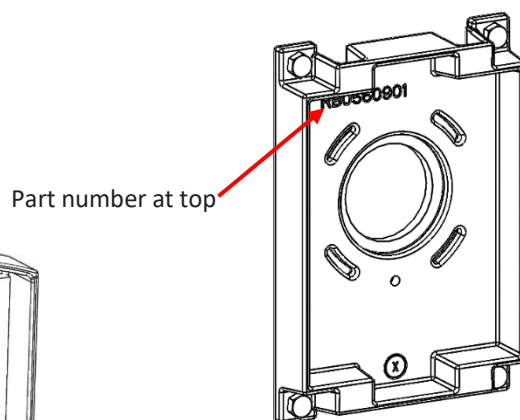


Figure 6b, WBA only



Install with curved portion of  
mounting plate at top

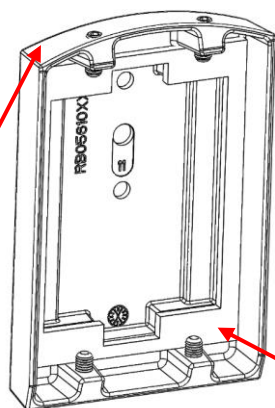


Figure 7



## RSX LED REPAIR KITS

**Step 4:** If the arm cover is attached, remove it to access the pole mounting area (See Fig 8) and route supply wires through the clearance slot and WBA cover hole

**Step 5:** Making sure that no wires are pinched, insert the 3/8" bolts (included with luminaire) through the mounting arm of the fixture housing, through the cover plate, and then thread into the threaded steel bar (See Fig 9). Tighten the two bolts to 30 ft-lbs (overtightening can damage components and void warranties).

**Step 6:** Make sure no wires are pinched and tuck excess wire up into the luminaire mounting area and reinstall the SPA Cover. Tighten the two cover screws to 18-20 in-lbs (overtightening can cause thread stripping and void all warranties).

Figure 8

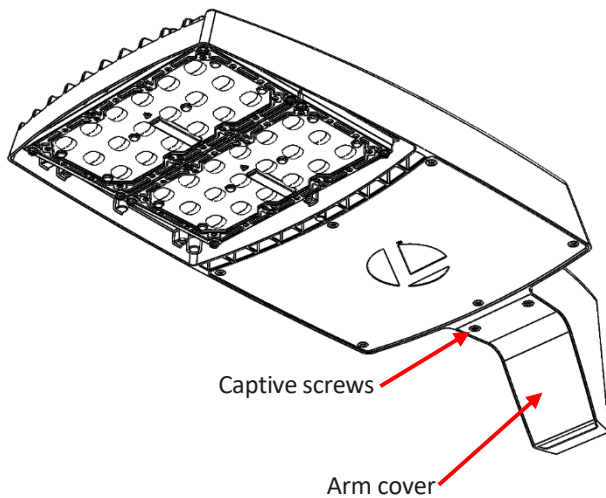
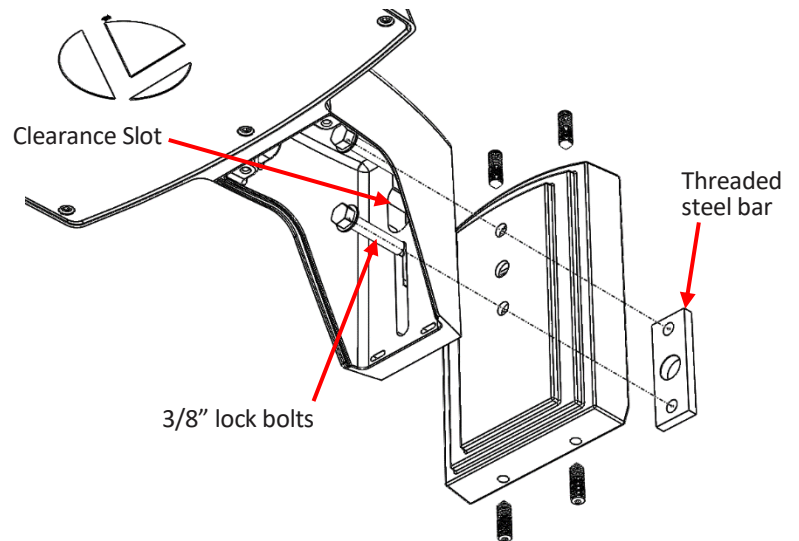


Figure 9



# Installation Instructions

## RSX LED REPAIR KITS

5 year limited warranty

CAUTION: THE NEXT STEPS MAY REQUIRE ASSISTANCE

**Step 7:** Make all wiring connections via the supplied wire leads in accordance with NEC and local codes.

**Step 8:** Place the entire light fixture/cover plate assembly onto the base plate (installed in step 1) and have someone tighten the top (2) 3/8" x 1-1/4" stainless steel recessed hex set screws (See Fig 10) until 3/8" to 1/4" of the screw threads are still visible, then tighten the bottom set screws.

**Step 8:** Alternating between the top and bottom set screws, gently tighten until snug (approximately one thread will remain showing on each screw).

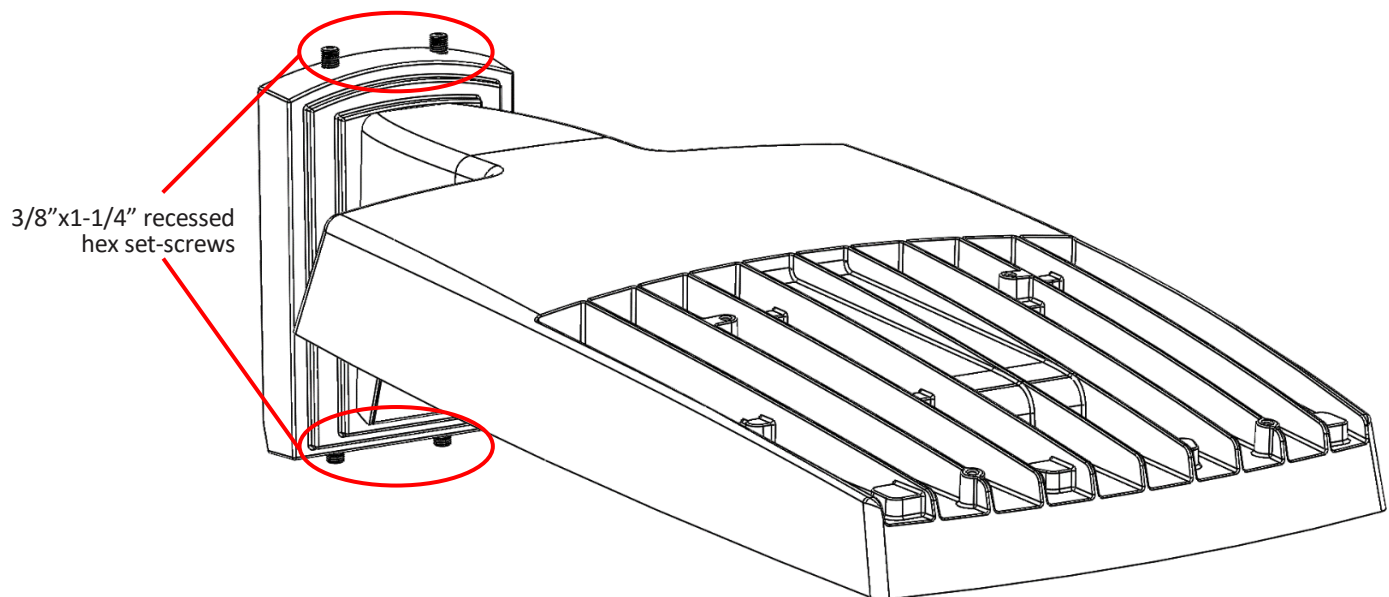
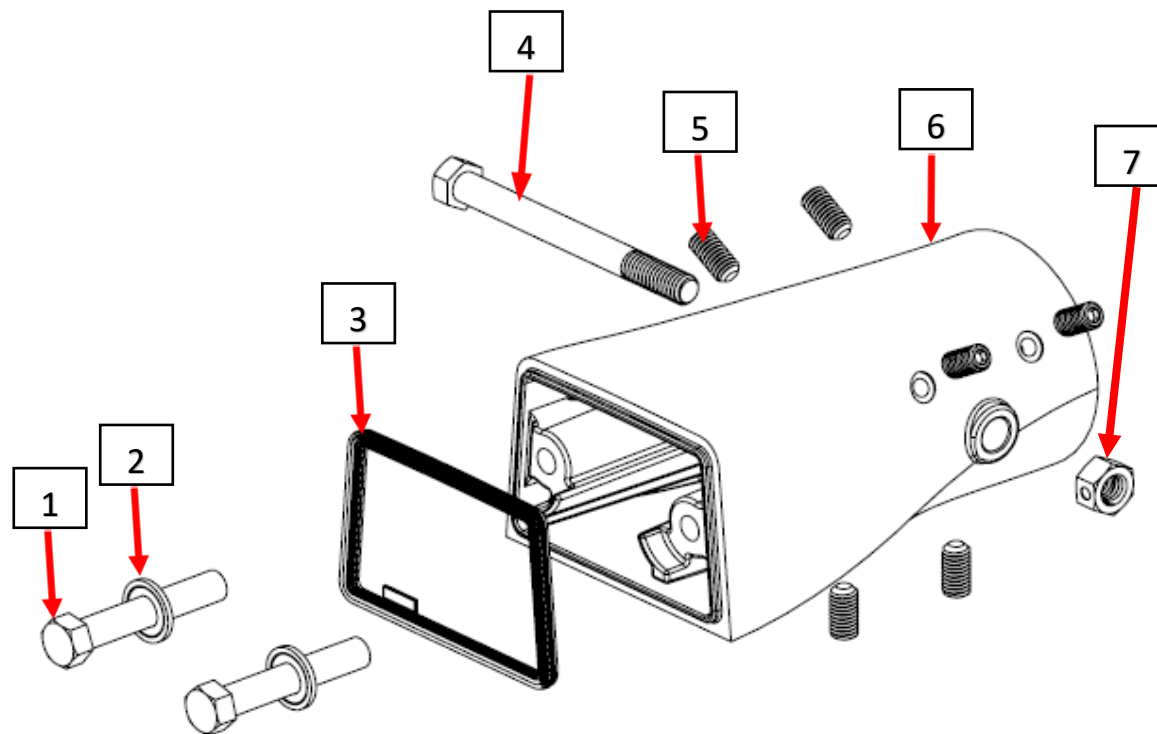


Figure 10

## MAST ARM (MA) INSTALLATION

### Material list

1. QTY 2 of 2" long 7/16-14 bolts
2. QTY 2 of 7/16 sealing washers
3. Replacement RSX arm sealing gasket
4. 4-1/2" long 7/16-14 retention bolt
5. QTY 6 of 3/4" long 3/8-16 set screws (pre-installed)
6. Replacement mast arm
7. 7/16-14 retention bolt nut



**Step 1:** If the sealing washers (items #2) included with the repair kit are still loose, insert them onto the 7/16-14 bolts (items #1). Insert the bolts into the thru-holes on the housing where the previous bolts were removed from (see figure 2 for reference). With the replacement RSX arm sealing gasket (item #3) in place on the housing, align the new arm assembly and attach it via the new bolts. **Tighten the bolts to 36.7 – 40.3 ft-lbs (440-490 in-lbs).**

### WARNING

**FAILURE TO PROPERLY TIGHTEN ARM ATTACHEMENT BOLTS COULD CAUSE LUMINAIRE TO FALL RESULTING IN PROPERTY DAMAGE, SERIOUS INJURY, OR DEATH**

# Installation Instructions

## RSX LED REPAIR KITS

5 year limited warranty

**Step 2:** (OPTIONAL, all configurations) Reinstall any internal component that were removed to create clearance for arm removal/installation. Reinstall any removed screws to 25-30 in-lbs. (2.1 – 2.5 ft-lbs.).

**Step 3:** Reattach the door to the luminaire housing using the door screws that were included with the original luminaire. 2 extra screws are included with all repair kits in case any screws are lost or damaged during luminaire service. Tighten all door screws to 25-30 in-lbs. (2.1 – 2.5 ft-lbs.). Failure to properly tighten the door fasteners may result in loss of watertight seal.

**Step 4:** Refer to the luminaire installation manual (document IM-459/IM-460, included with luminaire) for luminaire installation.

## INTEGRAL SLIPFITTER (IS) INSTALLATION

### Material list

1. QTY 2 of 7/8" long 8-32 screws (pre-installed)
2. Knuckle cover
3. Knuckle cover gasket
4. QTY 4 of 3/4" long 3/8-16 set screws (pre-installed)
5. Replacement knuckle – mounting side
6. QTY 2 of 1/2" long 3/8-16 set screws (pre-installed)
7. Replacement knuckle interface gasket
8. Replacement knuckle – housing side
9. QTY 2 of 7/16 sealing washers
10. 1-1/2" long 7/16-14 bolt
11. Replacement RSX arm sealing gasket
12. QTY 2 of 2" long 7/16-14 bolts
13. Angle limiter screw (preinstalled and removable)

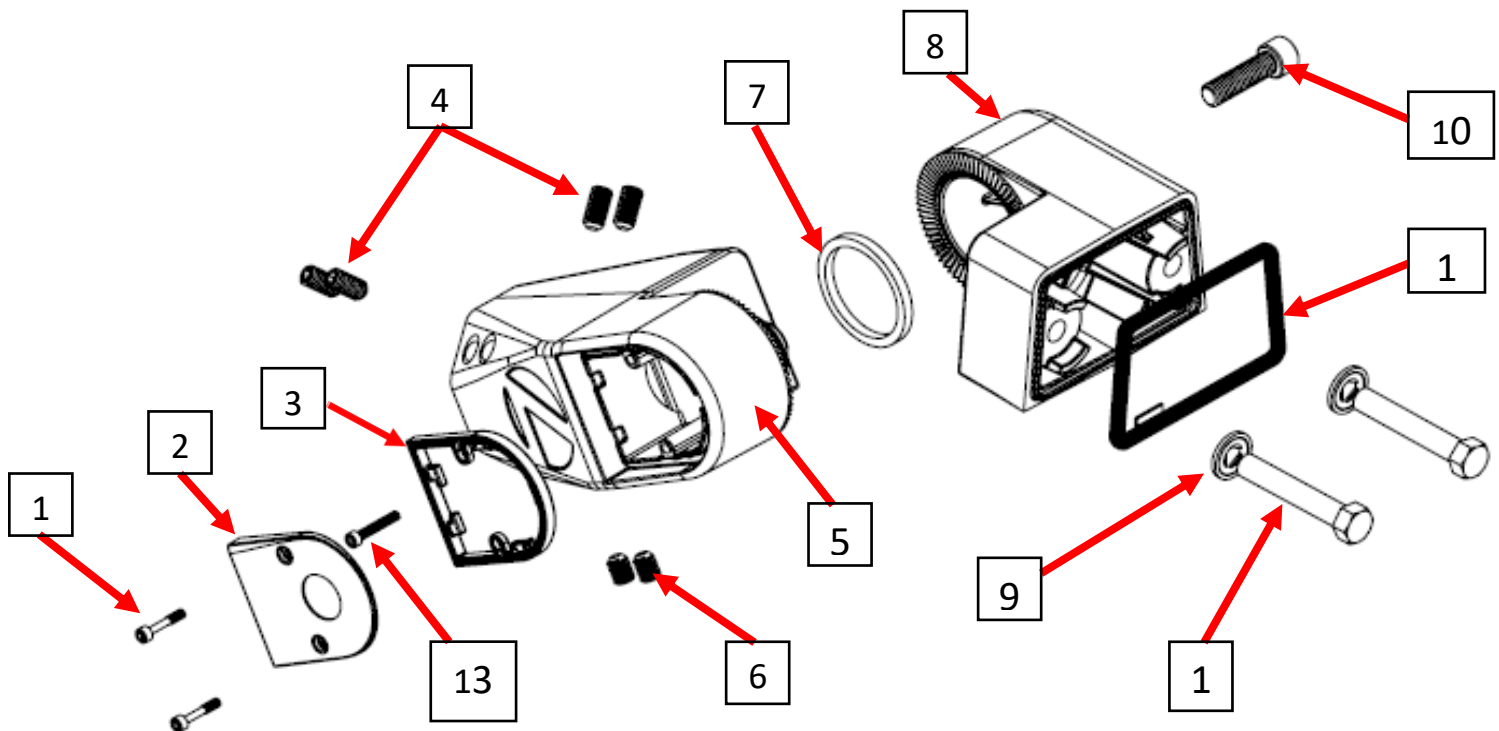


Figure 12 – IS repair kit materials

**Step 1:** If the sealing washers (items #9) included with the repair kit are still loose, insert them onto the 7/16-14 bolts (items #12). Insert the bolts into the thru-holes on the housing where the previous bolts were removed from (see figure 2). With the replacement RSX arm sealing gasket (item #11) in place on the housing, align the new arm-side of the knuckle assembly and attach it via the new bolts. **Tighten the bolts to 36.7 – 40.3 ft-lbs (440-490 in-lbs).**

### WARNING

**FAILURE TO PROPERLY TIGHTEN ARM ATTACHEMENT BOLTS COULD CAUSE LUMINAIRE TO FALL RESULTING IN PROPERTY DAMAGE, SERIOUS INJURY, OR DEATH**

**Step 2:** (OPTIONAL, all configurations) Reinstall any internal component that were removed to create clearance for arm removal/installation. Reinstall any removed screws to 25-30 in-lbs (2.1 – 2.5 ft-lbs).

**Step 3:** Reattach the door to the luminaire housing using the door screws that were included with the original luminaire. 2 extra screws are included with all repair kits in case any screws are lost or damaged during luminaire service. Tighten all door screws to 25-30 in-lbs (2.1 – 2.5 ft-lbs). Failure to properly tighten the door fasteners may result in loss of water tight seal.

**Step 4:** Route luminaire input wires through the housing portion of the knuckle into the wiring chamber of the mounting portion of the knuckle. NOTE: Wire routing should be done before securing the two portions of the knuckle together for ease of wire routing.

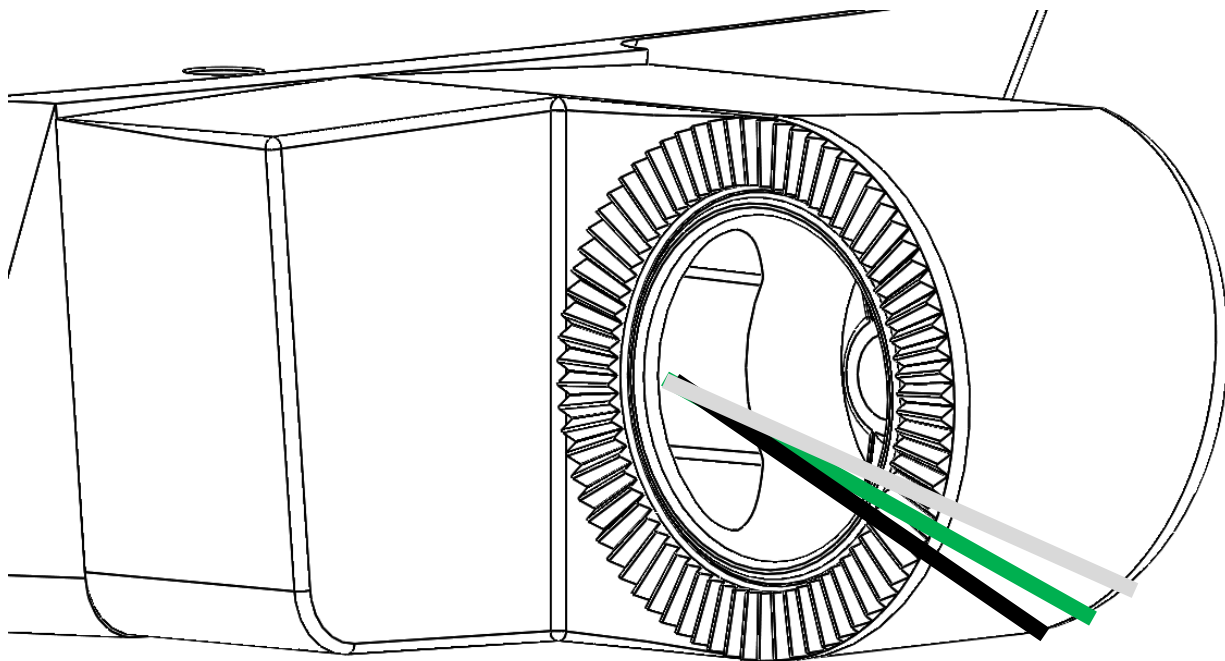


Figure 13 – IS wire routing; Housing portion of the knuckle



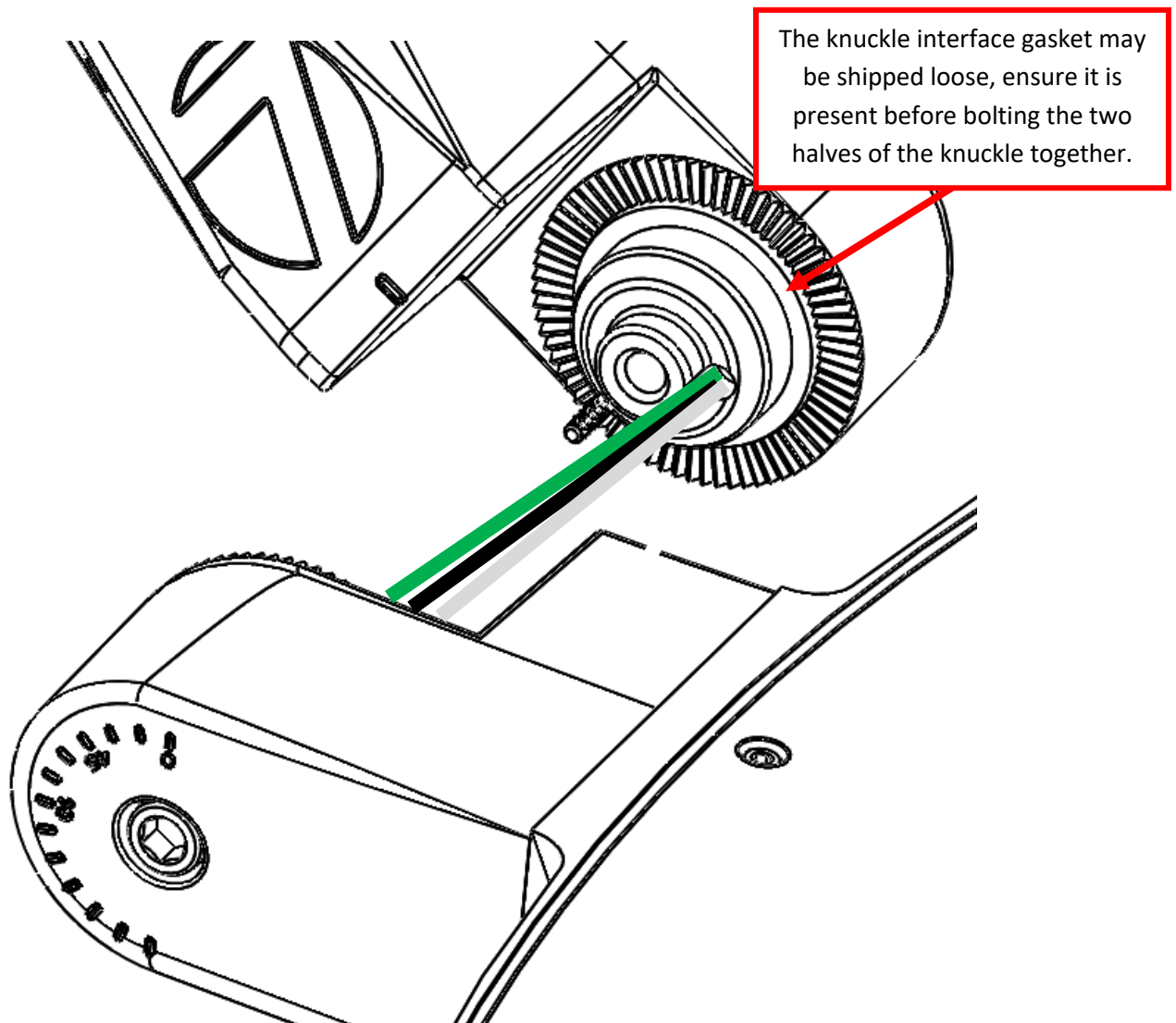


Figure 14 – IS wire routing; from housing portion of knuckle to mounting portion of the knuckle

**Step 5:** Refer to the luminaire installation manual (document IM-459/IM-460, included with luminaire) for luminaire installation.

## ADJUSTABLE TILT ARM POLE ADAPTER (AASP, AARP) & ADJUSTABLE TILT ARM WALL BRACKET (AAWB, AAWSC) INSTALLATION

### Material list

1. Conduit entry wall bracket with pre-installed coin plugs, shown (AAWSC only) **OR** Standard wall bracket (AAWB only)
2. Wall bracket cover with pre-installed foam gasket
3. Threaded plate
4. QTY 4 of 3/4" long 3/8-16 set screws (pre-installed)
5. Adjustable arm cover
6. QTY 2 of 7/8" long 8-32 screws
7. Replacement adjustable arm
8. Adjustable arm cover gasket
9. Knuckle interface gasket
10. QTY 2 of 2.5" long 3/8-16 bolts
11. Replacement knuckle – housing side
12. 1-1/2" long 7/16-14 bolt
13. Replacement RSX arm sealing gasket
14. QTY 2 of 7/16 sealing washers
15. QTY 2 of 2" long 7/16-14 bolts

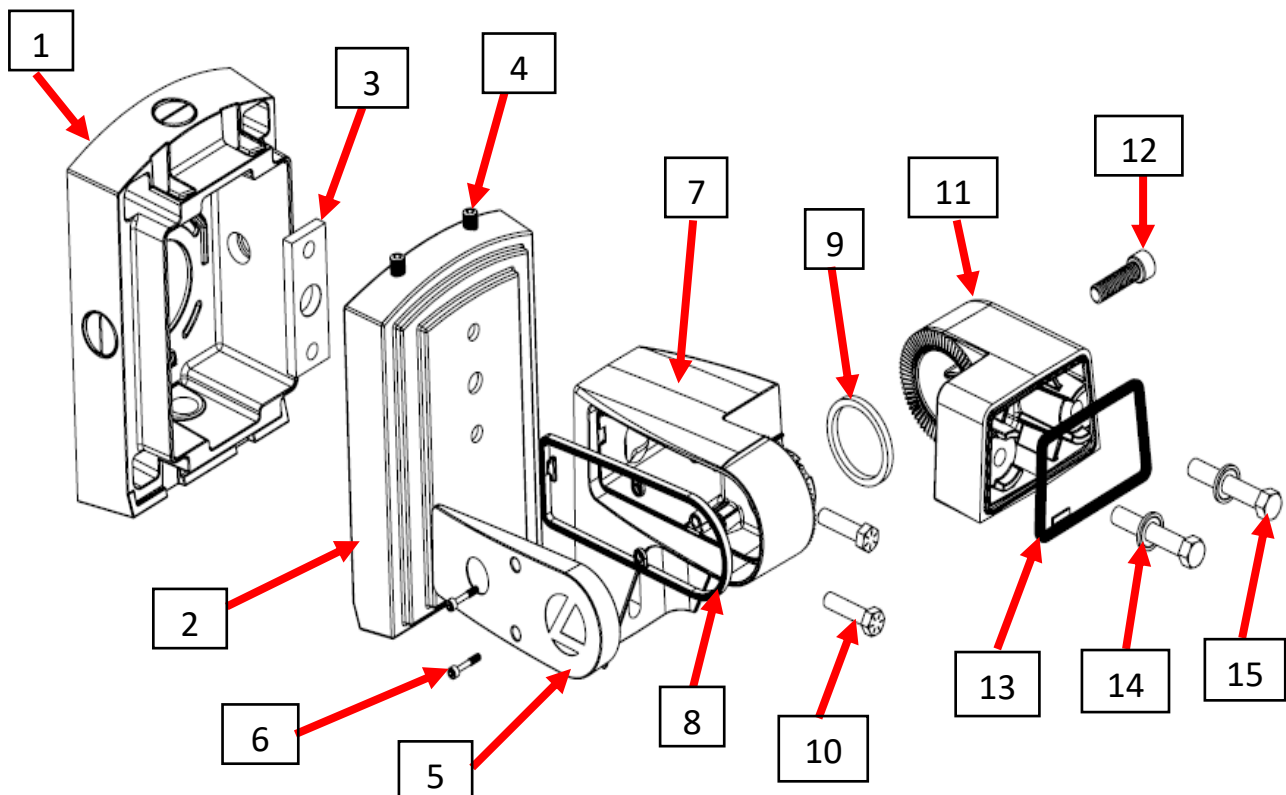


Figure 15 – IS repair kit materials

**Step 1:** If the sealing washers (items #14) included with the repair kit are still loose, insert them onto the 7/16-14 bolts (items #15). Insert the bolts into the thru-holes on the housing where the previous bolts were removed from (see figure 2). With the replacement RSX arm sealing gasket (item #13) in place on the housing, align the new arm-side of the knuckle assembly and attach it via the new bolts. **Tighten the bolts to 36.7 – 40.3 ft-lbs (440-490 in-lbs).**

### **WARNING**

**FAILURE TO PROPERLY TIGHTEN ARM ATTACHEMENT BOLTS COULD CAUSE LUMINAIRE TO FALL RESULTING IN PROPERTY DAMAGE, SERIOUS INJURY, OR DEATH**

**Step 2:** (OPTIONAL, all configurations) Reinstall any internal component that were removed to create clearance for arm removal/installation. Reinstall any removed screws to 25-30 in-lbs. (2.1 – 2.5 ft-lbs.).

**Step 3:** Reattach the door to the luminaire housing using the door screws that were included with the original luminaire. 2 extra screws are included with all repair kits in case any screws are lost or damaged during luminaire service. Tighten all door screws to 25-30 in-lbs. (2.1 – 2.5 ft-lbs.). Failure to properly tighten the door fasteners may result in loss of water tight seal.

**Step 4:** Route luminaire input wires through the housing portion of the knuckle into the wiring chamber of the mounting portion of the knuckle (see figure 13). NOTE: Wire routing should be done before securing the two portions of the knuckle together for ease of wire routing.

**FOR AASP AND AARP – REPAIR IS COMPLETE, REFER TO IM-459/IM-460 FOR REINSTALLATION**

**FOR AAWB AND AAWSC – GO TO SHEET 8 AND FOLLOW INSTRUCTIONS FOR WALL BRACKET INSTALLATION**