

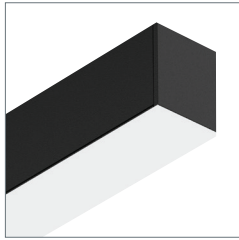
**MARK** ARCHITECTURAL LIGHTING™

# Slot PSW LED

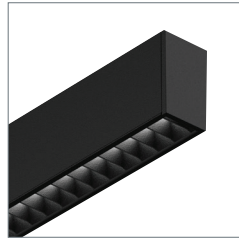
Beauty | Performance | Control



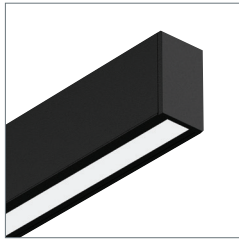
# Lens Options



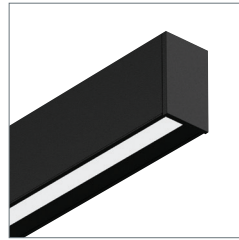
Edge View



Louver



Wall Graze



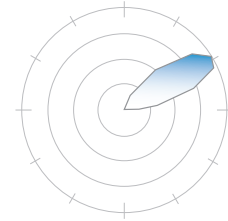
Wall Wash

# Exceptional Performance

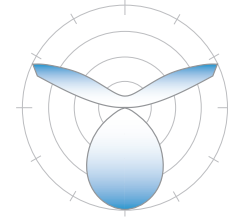
The Slot PSW LED is available in 2" and 4" apertures, three mounting types and several distributions. These luminaires offer:

- **High Performance:** Five precision distributions (asymmetric, batwing, lambertian, wall wash and wall graze) deliver optimized light wherever it is needed. This application flexibility is further enhanced with multiple lumen packages
- **Superior Color and Quality:** Rigorously engineered LED modules and optional downlights provide exceptional quality lighting
- **Seamless Controls Integration:** nLight® lighting control options provide daylight dimming, occupancy detection and constant lumen management
- **Simplified Installation:** Patent-pending Slot AEL 3-step fixture-to-fixture connection method
- **Wet Location Rating\*:** Slot LED surface mount with flush lens is wet location rated; all other Slot LED luminaires are rated for use in damp locations

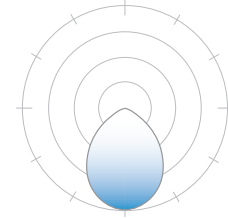
\* Note: downlights are not wet location rated.



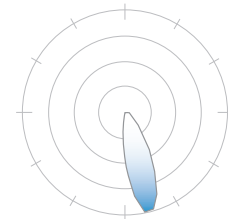
Asymmetric



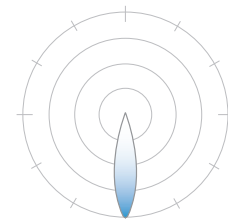
Batwing/Lambertian



Lambertian



Wall Wash



Wall Graze

## lumenDIRECTIR optics for Pendant, Surface and Wall Mount

Slot LED's patent-pending, precision lumenDIRECTIR optics condition and refract light to deliver accurately controlled, striation-free and uniform white light.

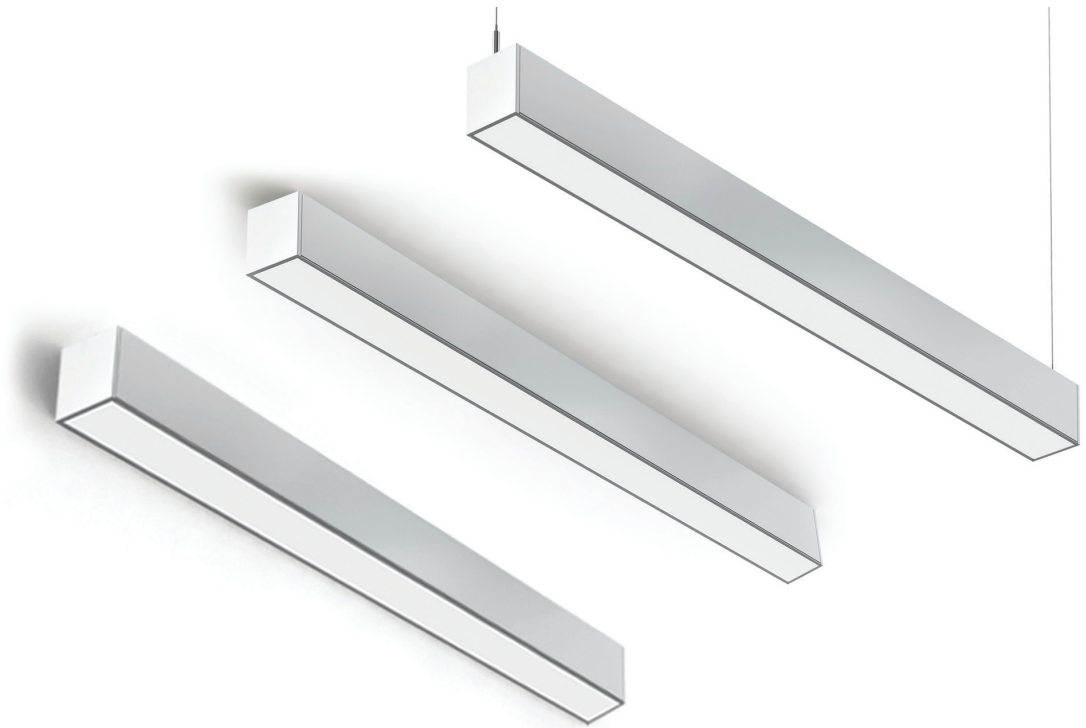
# Your Vision Is Reality

The clean, contemporary lines of the **SLOT PSW LED** can either blend in quietly with the architecture or make a bold design statement. Multiple luminaire mounting options provide harmony with the physical space and are offered in 2" to 4" widths.

The SLOT PSW LED luminaires provide an unparalleled package of performance and features. Whether pendant, surface or wall mount, these luminaires offer superior efficacies, multiple lens and distribution options with integrated controls. In short, everything you need to light your imagination.

## Features:

- Continuous run lengths in 1' increments standard with the ability to specify to 1/4" to meet your project requirements (minimum 2')
- Slot 2 and 4 luminaires are available in pendant, surface and wall mount options
- Optional downlights provide the effect of a secondary layer of a direct luminaire without changing the visual feel of the ceiling
- Lumen outputs from 400 to 1000 lumens per foot with the ability to customize in 50 lumen increments
- Efficacies up to 155 lumens per foot qualify for energy rebates

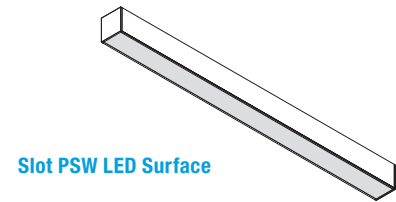
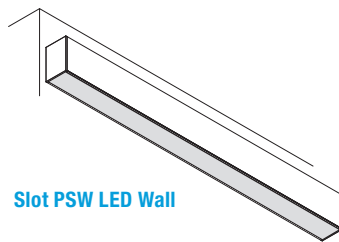
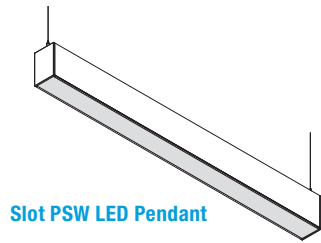




Beauty. Performance. Control.



# Performance and Models



		SLOT PSW 2 LED			SLOT PSW 4 LED		
	LUMEN OUTPUT	PENDANT	SURFACE	WALL	PENDANT	SURFACE	WALL
Direct	400LMF	1,766	1,766	1,713	1,800	1,800	1,724
	600LMF	2,710	2,710	2,608	2,707	2,707	2,588
	800LMF	3,577	3,577	3,440	3,571	3,571	3,397
	1000LMF	4,225	4,225	4,048	4,103	4,103	3,849
Indirect	I600LMF	2,465	2,465	2,576	2,573	2,573	2,567
	I800LMF	3,187	3,187	3,359	3,309	3,309	3,340
	I1000LMF	4,226	4,226	4,443	4,336	4,336	4,445
	I1200LMF	5,072	5,072	5,216	5,067	5,067	5,325
Direct/ Indirect	400LMF / I600LMF	1766 / I2465	N/A	1713 / I2576	1800 / I2573	N/A	1724 / I2567
	400LMF / I800LMF	1766 / I3187	N/A	1713 / I3359	1800 / I3309	N/A	1724 / I3340
	400LMF / I1000LMF	1766 / I4226	N/A	1713 / I4443	1800 / I4336	N/A	1724 / I4445
	400LMF / I200LMF	1766 / I5072	N/A	1713 / I5216	1800 / I5067	N/A	1724 / I5325
	600LMF / I600LMF	2710 / I2465	N/A	2608 / I2576	2707 / I2573	N/A	2588 / I2567
	600LMF / I800LMF	2710 / I3187	N/A	2608 / I3359	2707 / I3309	N/A	2588 / I3340
	600LMF / I1000LMF	2710 / I4226	N/A	2608 / I4443	2707 / I4336	N/A	2588 / I4445
	600LMF / I200LMF	2710 / I5072	N/A	2608 / I5216	2707 / I5067	N/A	2588 / I5325
	800LMF / I600LMF	3577 / I2465	N/A	3440 / I2576	3571 / I2573	N/A	3397 / I2567
	800LMF / I800LMF	3577 / I3187	N/A	3440 / I3359	3571 / I3309	N/A	3397 / I3340
	800LMF / I1000LMF	3577 / I4226	N/A	3440 / I4443	3571 / I4336	N/A	3397 / I4445
	800LMF / I1200LMF	3577 / I5072	N/A	3440 / I5216	3571 / I5067	N/A	3397 / I5325
	1000LMF / I600LMF	4225 / I2465	N/A	4048 / I2576	4103 / I2573	N/A	3849 / I2567
	1000LMF / I800LMF	4225 / I3187	N/A	4048 / I3359	4103 / I3309	N/A	3849 / I3340
1000LMF / I1000LMF	4225 / I4226	N/A	4048 / I4443	4103 / I4336	N/A	3849 / I4445	
1000LMF / I1200LMF	4225 / I5072	N/A	4048 / I5216	4103 / I5067	N/A	3849 / I5325	
	<b>Efficacy</b>	113 - 152	113 - 152	109 - 150	109 - 155	109 - 155	103 - 152
	<b>CCT Options</b>	2,700 - 5,000	2,700 - 5,000	2,700 - 5,000	2,700 - 5,000	2,700 - 5,000	2,700 - 5,000
	<b>Dimming (std/opt)</b>	1% / 0.1%	1% / 0.1%	1% / 0.1%	1% / 0.1%	1% / 0.1%	1% / 0.1%
	<b>CRI (std/opt)</b>	80 / 90	80 / 90	80 / 90	80 / 90	80 / 90	80 / 90
	<b>Downlight (opt)</b>	Yes	Yes	Yes	Yes	Yes	Yes

\*Data based on 4-foot sections at 3500K



# Advanced Dimming and Controls



## Mainstream Dynamic Tunable White

Mainstream Dynamic brings exciting features once reserved for niche applications into everyday lighting systems. The Tunable White feature allows designers to include white light into their scenes—matching the optimal light for different activities or to complement colors or materials within a visual environment.

## nLight®

The nLight® networked digital lighting control system is easy to use, easy to install and saves energy. Using only standard CAT-5e cable, nLight networks together occupancy sensors, wall stations and digital LED luminaires to create a digital lighting system with unmatched flexibility. nLight easily scales from one room to an entire campus to create a lighting control solution that's perfect for your space.

### nLight® supports Tunable White through nTune luminaires

- Simple plug & play installation by utilizing the nLight network and all nLight devices that are available today
- Adjust to any CCT in the Productivity Range 3000K-5000K or Rhythm Range 2700K-6500K
- Customize your application with SensorView
- nConfig mobile app is a cost-effective method that simplifies programming and reduces start-up times

## nLight® AIR

nLight AIR is a simple wireless lighting control solution complete with Acuity Brands LED fixtures with embedded smart sensor and wireless nLight AIR wall switches. nLight AIR allows you to confidently and quickly finish the job and move on to the next one with an easy to install wireless lighting control solution—fewer devices, no wires! A perfect solution for renovations where running wires can be time consuming. Start-up is streamlined with the CLAIRITY™ Pro app.



**MARK** ARCHITECTURAL LIGHTING

[marklighting.com](http://marklighting.com)