

RSX LED Area and Flood

Area and Flood Luminaires for the Renovation Lighting Market

June 2022

Confidentiality Statement

The information in this presentation is confidential and proprietary, and may not be used, reproduced or distributed without the express written permission of Acuity Brands Lighting, Inc.

Introducing the Complete Line of RSX LED Area and Flood Luminaires

4 x 16 x 13 x 21

Sizes

**Photometric
Distributions**

**Mounting
Configurations**

**Days Delivery
to your Door**

**Everything you need to win in the
renovation lighting market**


RSX LED Area Luminaires

An Unbeatable Hand in Area Lighting!



An Unbeatable Hand in Area Lighting!



<p>A ♠</p>  <p>D-Series</p> <p>♠ A</p>	<p>J ♠</p>  <p>New RSX</p> <p>♠ J</p>
--	--

Winning the Specification Game with D-Series



- Looks great!
- Best optics in the industry provide the superior uniformity and lowest power density
- Wide distributions allow for increased pole spacing, reducing costs on new construction projects
- Specialty optics such as extreme cut-off optics for LEED projects
- Budget-friendly pricing

The #1 Selling Outdoor Lighting Family

Winning the UPR Game with the RSX

- Also looks great!
- Priced for payback!
- Lumen packages to replace 70W to 1000W and (2) 1000W HID!
- Ten area distributions
- Special automotive front row optic!
- Twelve mounting configurations
- nLight® AIR for ultimate control!
- Made in North America – 21-day delivery of configured products!

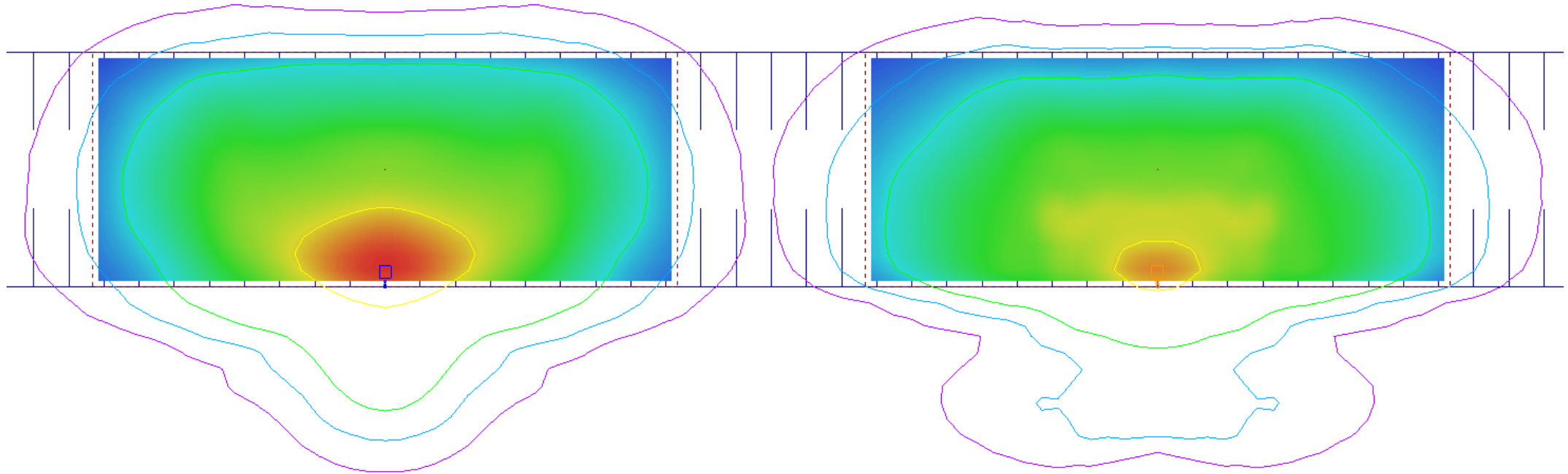
The RSX excels in the renovation market the way D-Series does for the specification market.



RSX Photometric Comparison to D-Series


RSX2 LED P6 40K R3

DSX1 LED P9 40K T3M



While the D-Series is optimized for maximum pole spacing in new construction applications, the new RSX is optimized for replacing existing HID luminaires where the pole spacing is fixed.

Key Features and Benefits

Feature	Benefit
Four Sizes (7,000 to 70,000 Lumens)	One area & flood family can be used across a broad range of applications on site
Many Mountings - Direct Arm, Knuckle, Mast-Arm, Adjustable Arm and more	Highly utilized mountings address the wide variety of application needs across the large HID installed base.
Lithonia “no drill” direct pole mounting	Saves up to 75% in installation costs by mounting onto most any existing drill pattern without the need of drilling additional holes.
Ten Area Optical Choices	R2, R3, R3S, R4, R4S, R5, R5S, AFR, AFRR90 and AFRL90
DLC Premium listings	Maximizes utility rebates, lowering the initial costs.
Highly Efficient LED’s	With up to 155 LPW, RSX can replace 70W to 1000W and even (2) 1000W of traditional sources and save up to 77% in energy costs.
nLight® AIR Sensors 	nLight® AIR controls allow from-the-ground programming, motion sensor “group response”. Coupled with an nLight ECLYPSE®, scheduling and monitoring provide increased functionality and energy savings.

The Lumens You Need:



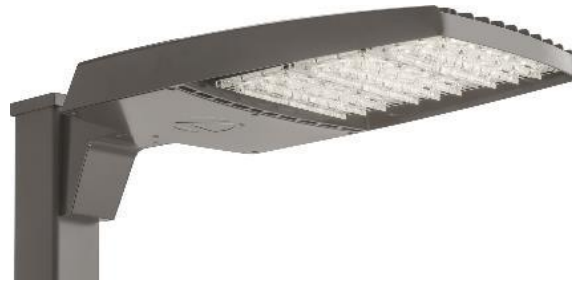
RSX1

- 7,000 - 17,000 lumens
- 51W to 133W
- Replaces 70W to 400W



RSX2

- 11,000 - 31,000 lumens
- 71W to 244W
- Replaces 250W to 1000W



RSX3

- 28,000 - 41,000 lumens
- 194W to 312W
- Replaces 400W to 1000W



RSX4

- 40,000 – 70,000 lumens
- 287W to 545W
- Replaces (1) or (2) 1000W

Size 1 Performance

Power Package	P1	P2	P3	P4
Lumens (4000K, R3)	7,096	9,843	14,023	16,360
Watts	51W	72W	109W	133W
LPW	139	137	129	123
Lumen Maintenance	L92 @ 100,000 Hours			
DLC	Premium!			
Replaces	175W	250W	400W	400W



RSX1



Size 2 Performance

Power Package	P1	P2	P3	P4	P5	P6
Lumens (4000K, R3)	10,992	17,202	21,737	25,002	28,620	30,267
Watts	71W	111W	147W	187W	210W	244W
LPW	155	155	148	134	136	124
Lumen Maintenance	L92 @ 100,000 Hours					
DLC	Premium!					
Replaces	250W	400W	400W	1000W	1000W	1000W



RSX2



Size 3 Performance

Power Package	P1	P2	P3	P4
Lumens (4000K, R3)	27,283	30,185	35,346	40,448
Watts	194W	222W	266W	312W
LPW	141	136	133	130
Lumen Maintenance	L92 @ 100,000 Hours			
DLC	Premium!			
Replaces	400W - 1000W			



RSX3



Size 4 Performance

Power Package	P1	P2	P3	P4	P5	P6
Lumens (4000K, R3)	39,719	45,183	50,393	55,426	61,735	68,664
Watts	275W	320W	369W	431W	483W	546W
LPW	144	141	136	129	128	126
Lumen Maintenance	L92 @ 100,000 Hours					
DLC	Premium!					
Replaces	(1) or (2) 1000W					



RSX4



Super Energy-Efficient Solutions!

	175W Replacement	250W Replacement	400W Replacement	1000W Replacement
Product	RSX1 P1	RSX2 P1	RSX2 P2	RSX4 P2
Lumens (R3)	7,096	10,992	17,202	45,183
Watts	51W	71W	111W	320W
LPW	139 LPW	155 LPW	155 LPW	141 LPW
Savings	76%	76%	75%	70%

The Mounting Configurations You Need:



**Direct Pole Mount
(SPA / RPA)**



**Wall Mount
(WBA)**



**Mast Arm
(MA)**



**Wall Mount
w/Surface Conduit
(WBASC)**

The *Adjustable* Mounting Configurations You Need:



Direct Pole “No-Drill” Mounting Mechanism:



(SPA) – Square Pole Mounting

(RPA) – Round Pole Mounting
(3.2” minimum pole diameter for
luminaires at 90 degrees)



**RPA round pole adapter plate*



The RSX features a universal drilling mounting mechanism that mates to 99% of existing mounting holes. Saves up to 75% in installation labor!

Luminaires can be installed and wired without opening the driver compartment!

HELPFUL TIP:

Don't know what type of pole is on your job? Order “RPA” (in place of “SPA”) mount to accommodate both round or square poles.

Sample Nomenclature:

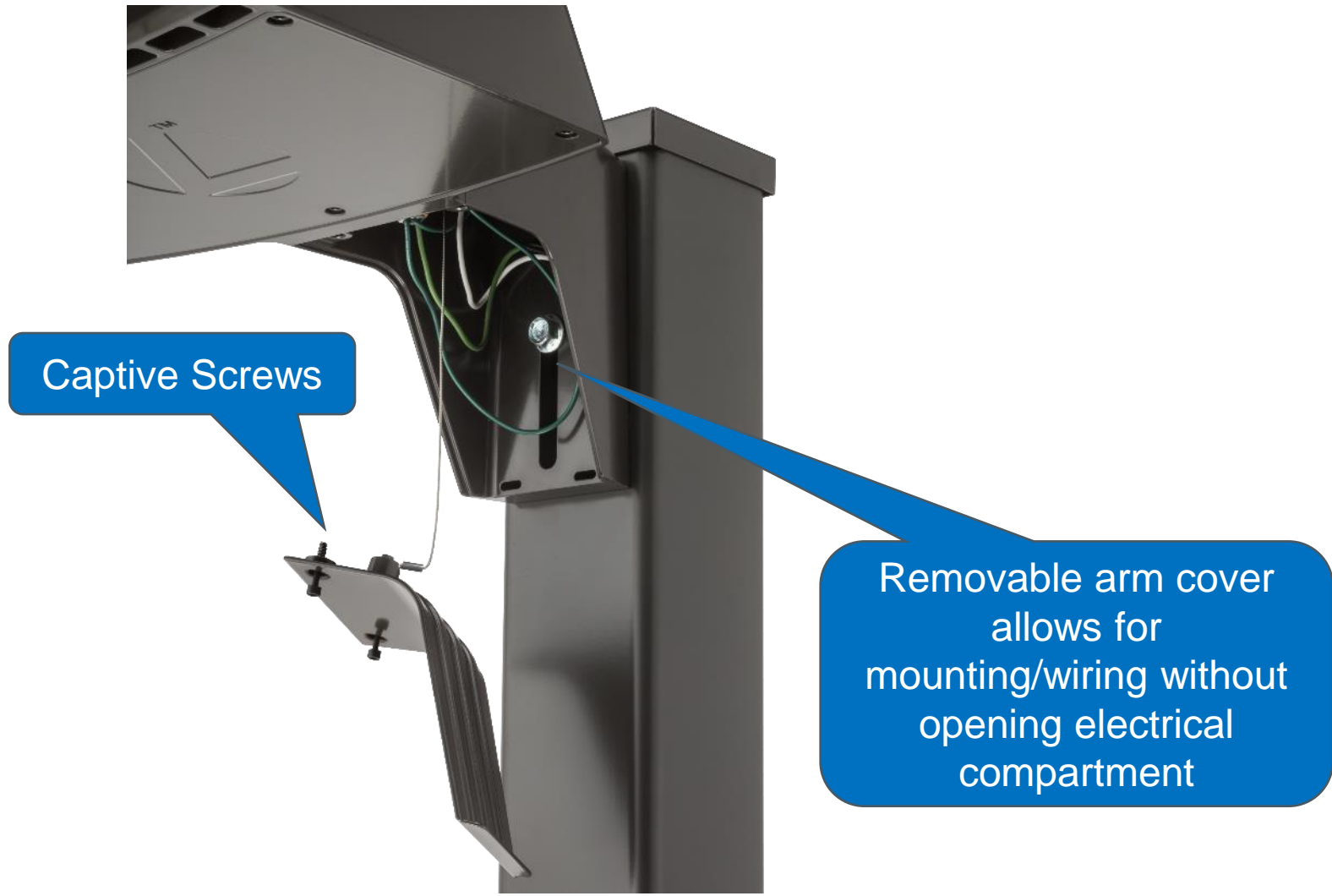
RSX1 LED P3 40K R3 MVOLT RPA DDBXD

AcuityBrands.

“No-Drill” feature also on these mountings:

- AASP
- AARP
- ERPA
- ESPA

Easy-Access Wiring:



Captive Screws

Removable arm cover allows for mounting/wiring without opening electrical compartment

RSX “No Drill” Universal Mounting:



Step 1:

Fasten the top mounting bolt to the nut plate on the inside of the pole



Step 2:

Using the arm's key-hole slot, hang the luminaire on the top mounting bolt.



Step 3:

Fasten the lower mounting bolt to the sliding nut on the inside of the pole. Tighten both bolts.



Step 4:

Complete wiring connections and replace wiring compartment cover plate.

RSX4 Extended Arm

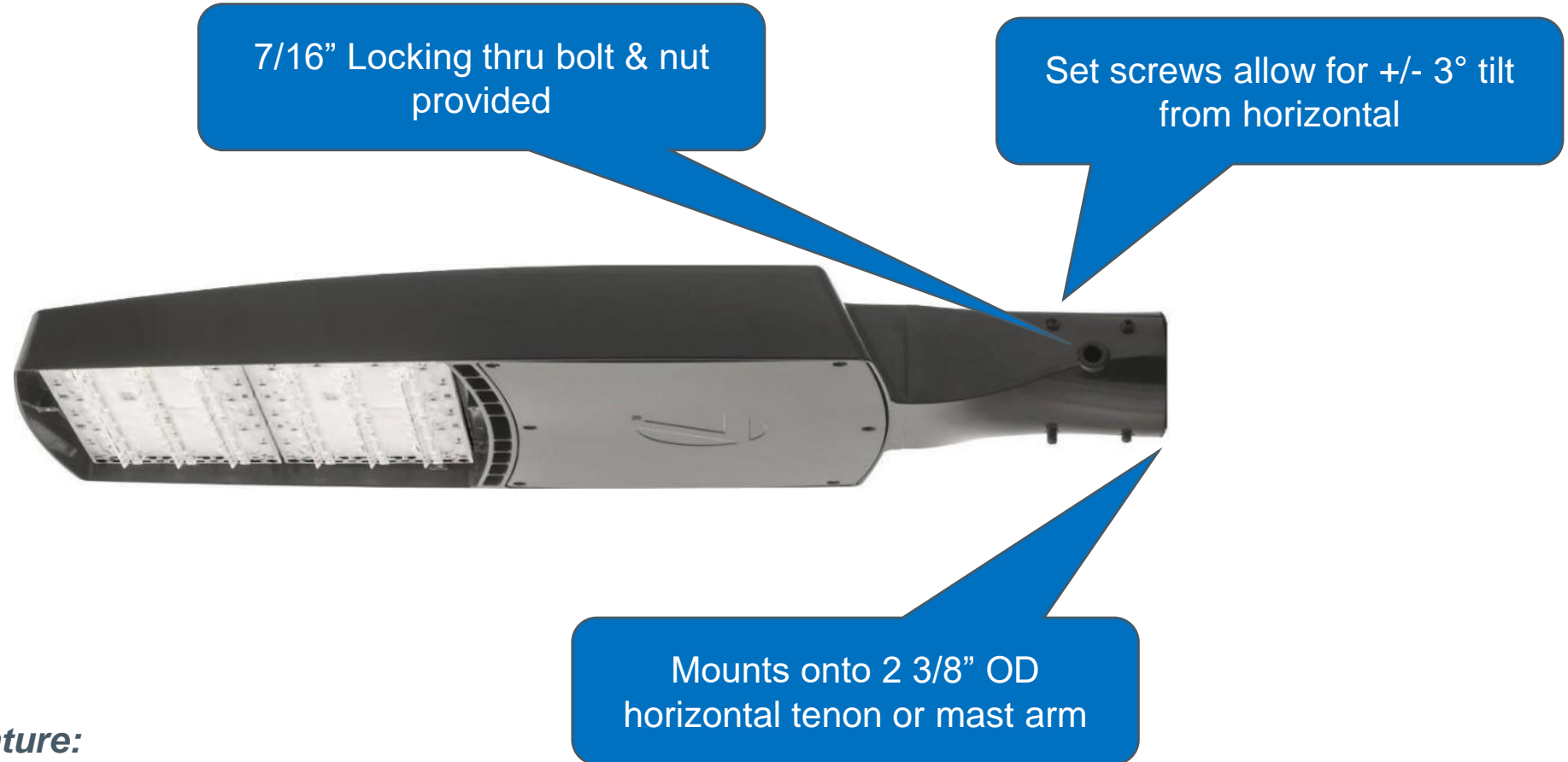


Extended Arm Square Pole Mount (ESPA)
Extended Arm Round Pole Mount (ERPA)

- Use when mounting RSX4 luminaires in combination of 2, 3 or 4 @ 90°
- Extends luminaire forward to accommodate clearance at adjacent corners
- Available for both square and round pole mounting

Sample Nomenclature:
RSX4 LED P6 40K R3 MVOLT *ESPA* DDBXD
AcuityBrands.

Mast-Arm Mounting:



Sample Nomenclature:

*RSX2 LED P3 40K R3 MVOLT **MA** DDBXD*

RSX Area with Wall Bracket:



Sample Nomenclature:
RSX2 LED P3 40K R3 MVOLT **WBA** DDBXD



$\frac{3}{4}$ " NPT female threads
& plugs on all four sides

Sample Nomenclature:
RSX2 LED P3 40K R3 MVOLT **WBASC** DDBXD

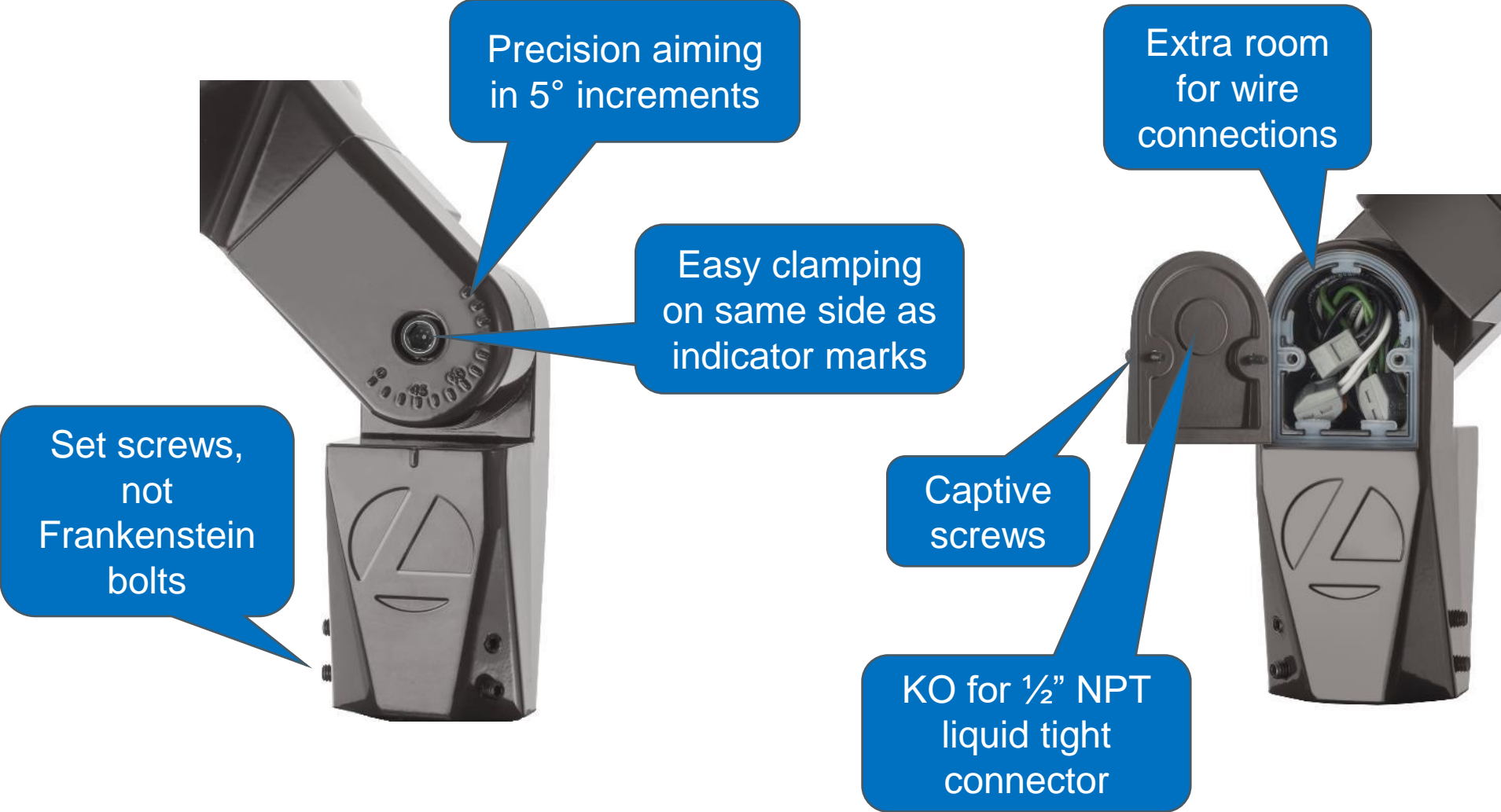
Adjustable Slipfitter:

Mounts on 2 3/8" OD
tenon for pole-top
lighting (downward
aiming)



Sample Nomenclature:
RSX2 LED P3 40K R3 MVOLT IS DDBXD

Slipfitter Mounting – Super Contractor-Friendly:



Adjustable Arm – Direct Pole Mount:

(AASP) – Adjustable Arm Square Pole Mounting

Or

(AARP) – Adjustable Arm Round Pole Mounting

**Uses RPA round pole adapter plate*



Features the RSX universal “no-drill” mounting mechanism that mates to 99% of existing mounting holes.

Sample Nomenclature:
RSX2 LED P6 40K R3 MVOLT **AASP** DDBXD

Adjustable Mountings Make Installation Easy!



Not This!



This!

Adjustable Arm – Wall Mounting:



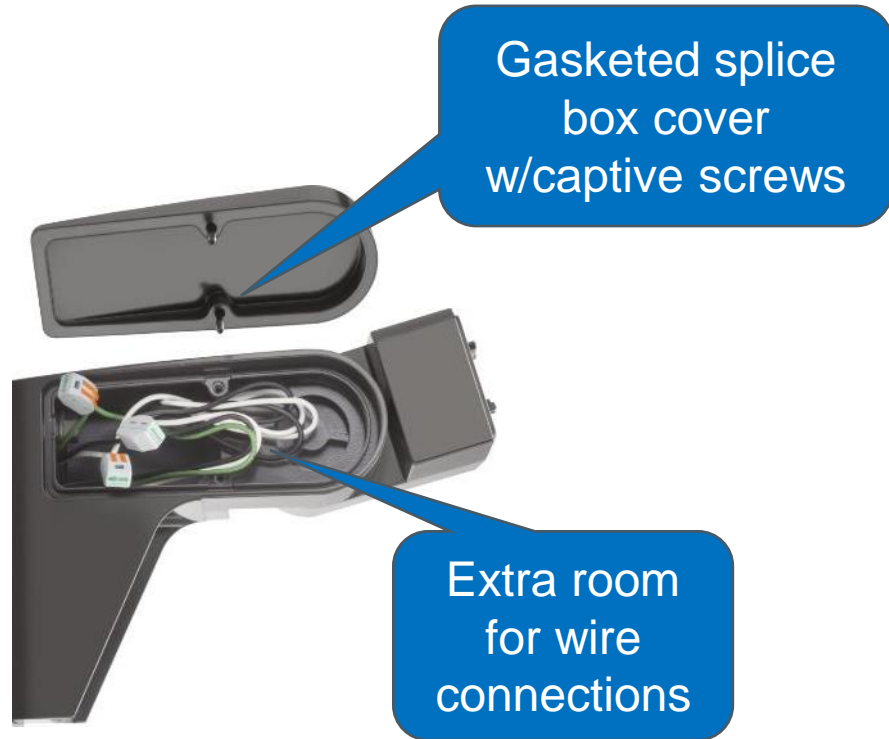
Sample Nomenclature:
RSX2 LED P6 40K R3 MVOLT **AAWB** DDBXD



$\frac{3}{4}$ " NPT female threads
& plugs on all four sides

Sample Nomenclature:
RSX2 LED P6 40K R3 MVOLT **AAWSC** DDBXD

Adjustable Arm – All Variations:



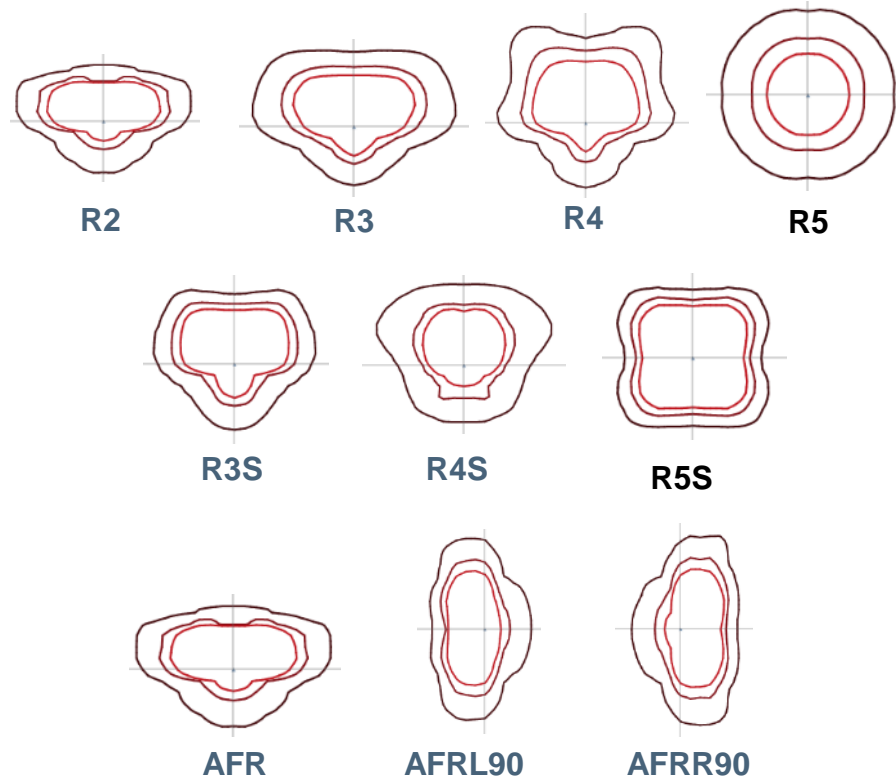
Applies To Following Mountings:

- AASP
- AARP
- AAWB
- AAWSC

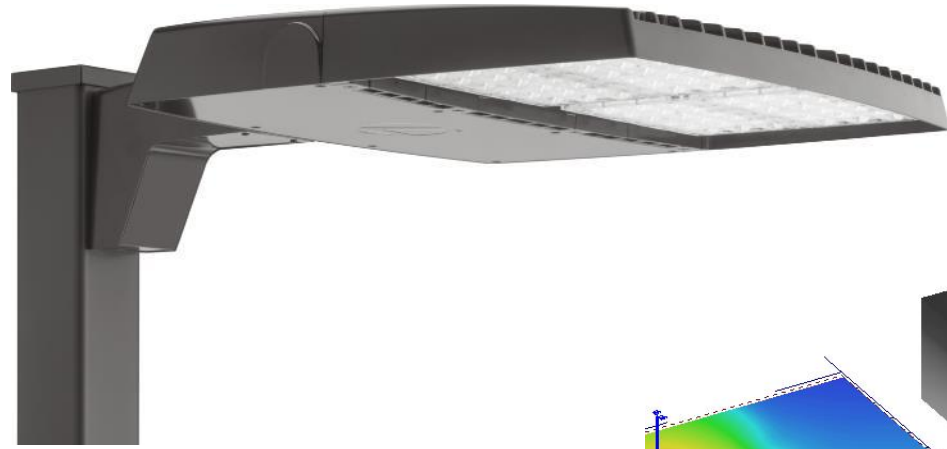
The Optics You Need:



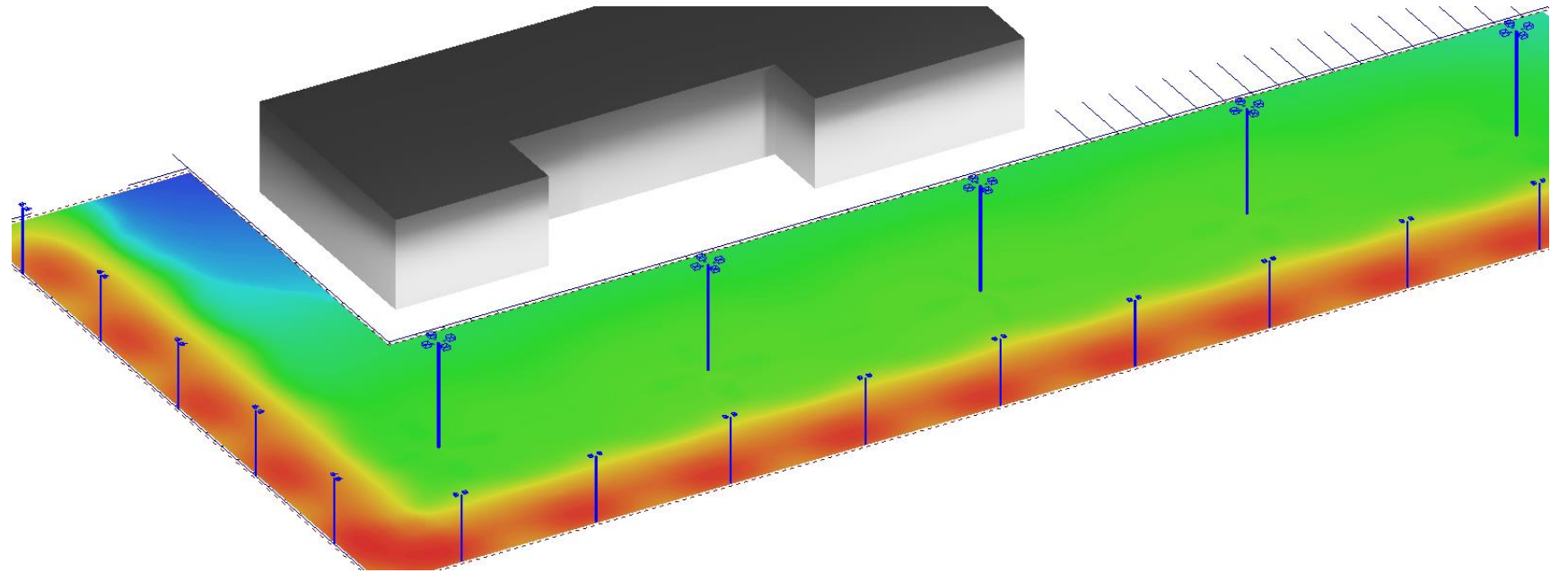
(10) Area Lighting Distributions



Auto Dealership Lighting with the AFR Optic:



Maximizes front row illumination
in automobile dealerships



Sample Nomenclature:

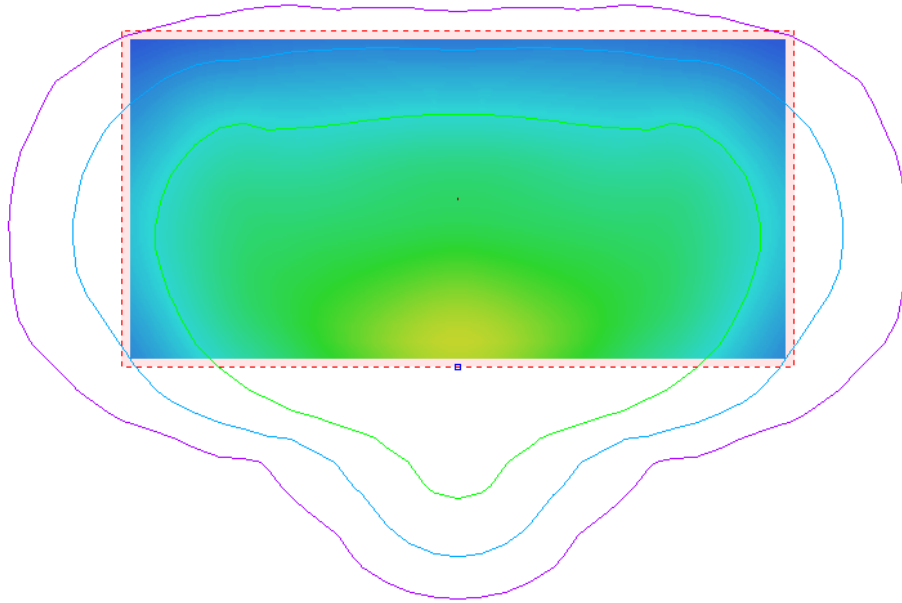
RSX4 LED P6 40K **AFRR90** MVOLT SPA DDBXD

RSX4 LED P6 40K **AFRL90** MVOLT SPA DDBXD

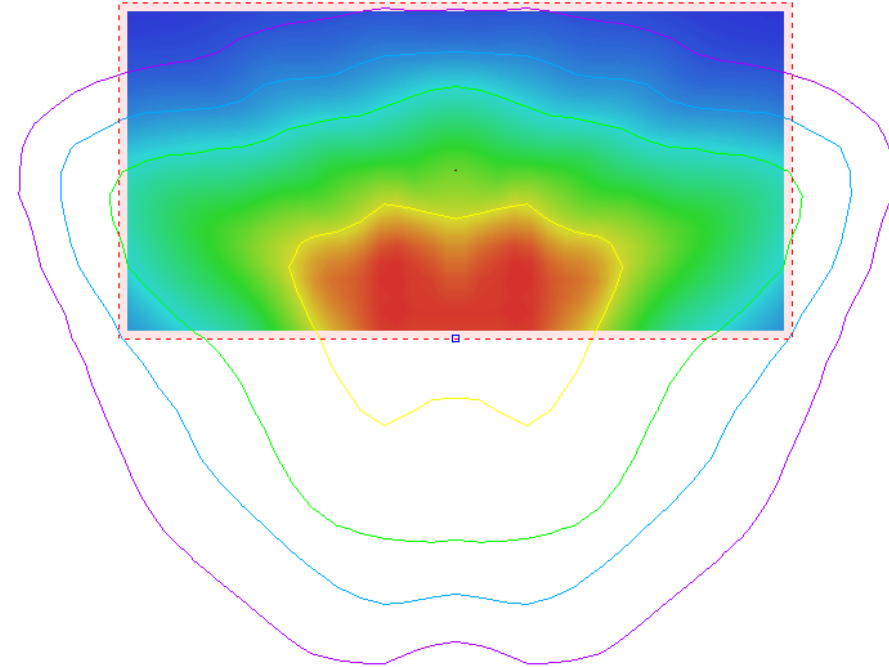
AcuityBrands.

Replacing Metal Halide with the RSX1

RSX1 LED P4 40K R3



KAD 400W Metal Halide R3

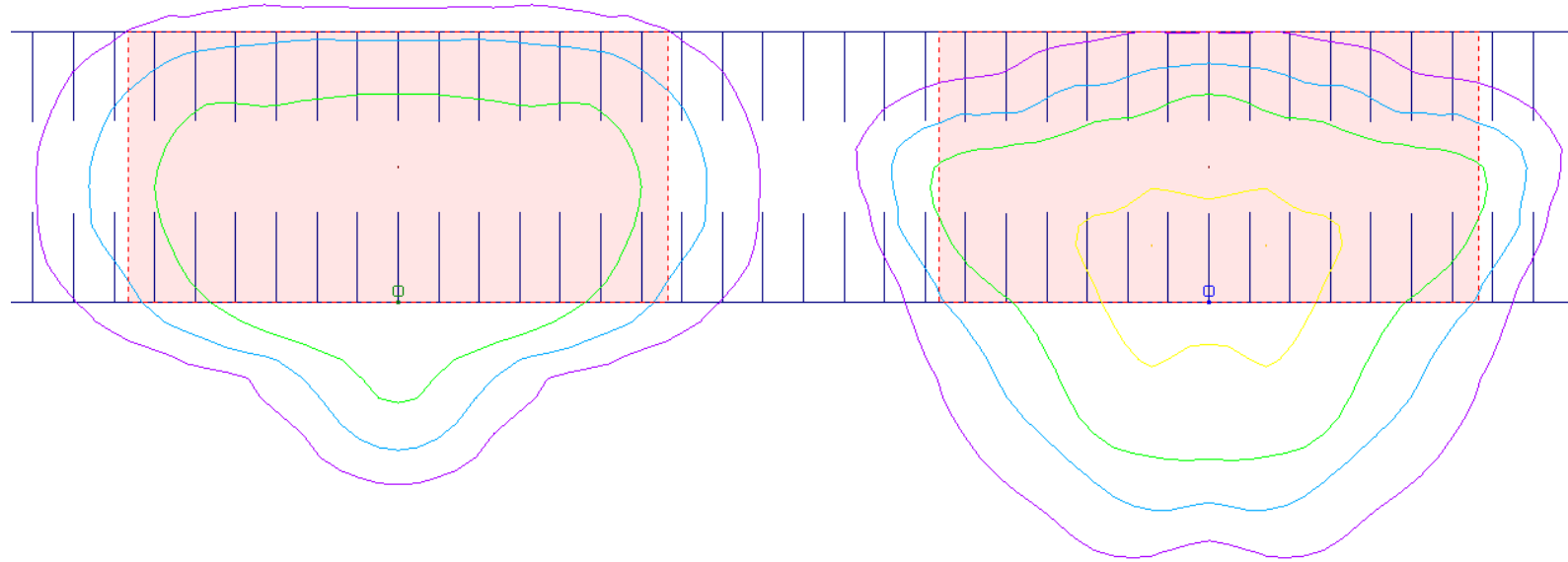


- Greater coverage
- No wasteful hot spot
- Better back-light control
- 70% energy savings

Replacing Metal Halide with the RSX1:

RSX1 LED P4 40K R3

KAD 400W Metal Halide R3



	RSX1 P4 40K R3	KAD 400M R3
Application	120' x 60'; Mounting Height: 25'	
Input Watts	133W	460W
Mean Lumens	16,360	19,840
LPW	123	43
Min. fc	0.3	0.1

RSX Area Shielding Accessories:



HS

House-Side Shield:
Installed as an option or
may be ordered as an
accessory



EGS

External Glare Shield:
Ships separate as option
or may be ordered as an
accessory

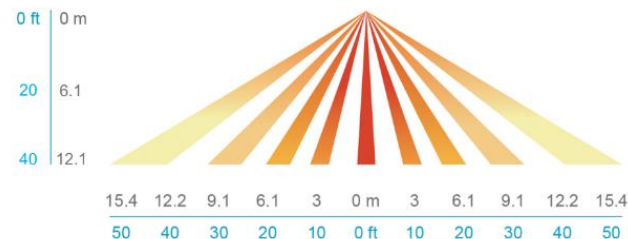


EGFV

External Glare Full Visor:
Ships separate as option or
may be ordered as an
accessory

The Control Solutions You Need:

- nLight® AIR for ultimate control
- Out-of-box settings offer photocell on/off and occupancy dimming... *does not require programming*
- If changes are desired, from-the-ground sensor programming is available with the free CLAIRITY Pro app
- Grouping for sensor “group response”
- Mate with nLight® ECLYPSE® for scheduled dimming
- Connects to parking garage, industrial and indoor luminaires for site-wide control
- MVOLT and HVOLT configurations
- Up to 40-foot mounting heights



Other Control Solutions:



Button Photocell
(MVOLT and 347V)



7-pin Photocell
Receptacle



External
Photocell



Field Adjustable
Output Device

Only the Best Components:



RSX only uses major brand name drivers for superior performance and assured supply of replacement parts for years to come

10 KV Surge protection device supplied as standard in all luminaires

Contractor-Friendly Design:



Other Important Features and Benefits:

Feature	Benefit
L92 / 100,000 Hour LM	Exceptional lumen maintenance! 20-year expected service life!
IP66 Ingress Protection	Tongue and groove gasket ensures that the product will not leak.
Knuckle Set Screws	Clean appearance vs. “Frankenstein bolts”. The Adjustable Integral Slip-fitter (IS) is best knuckle design in the industry!
3G Vibration Tested	Super robust design on all mountings and sizes!
3000K Options	3000K is a requirement to meet International Dark Skies (IDA) requirements. RSX has super-high 3000K LPW!
Super-Durable Finish	RSX features a zinc-infused Super Durable powder coat finish that has excellent gloss retention and corrosion resistance.
Acuity Brands 5-Year Warranty	Not just any warranty. This is a warranty from a trusted brand that has a history and financial stability that few can match. In a day where small suppliers come and go, and even large suppliers are bought and sold, Acuity stands alone in its commitment to the lighting industry.

RSX is the Ideal Solution for the LED Renovation Market

One family does it all...

- More lumens – over 70,000 lumens plus!
- Largest breadth of optics and mounting configurations
- Best in class photometric performance
- nLight® AIR for energy savings and code compliance
- Priced for payback from a complete offering to dominate the HID renovation market
- Made in North America – 21-day delivery of configured products
- RSX is still the best value in LED area & flood lighting for one-for-one replacement of HID luminaires

RSXF LED Floodlights

Winning the UPR Game with the RSXF

- Priced for payback!
- Lumen packages to replace 70W to 1500W HID
- Six Flood distributions
- Special area wide/forward optic!
- Five mounting configurations
- nLight® AIR for ultimate control!
- Made in North America – 21-day delivery of configured products!



The Lumens You Need:



RSXF1

- 7,000 – 23,000 lumens
- 51W to 164W
- Replaces 70W to 400W



RSXF2

- 11,000 – 44,000 lumens
- 71W to 326W
- Replaces 250W to 1000W



RSXF3


- 28,000 - 41,000 lumens
- 194W to 312W
- Replaces 400W to 1000W



RSXF4

- 40,000 – 85,000 lumens
- 275W to 646W
- Replaces (1) 1000W or (1) 1500W

Key Features and Benefits

Feature	Benefit
Four Sizes (7,000 to 85,000 Lumens)	One area & flood family can be used across a broad range of applications on site
Many Mountings – Slipfitter, Yoke, Adjustable Arm and more	Highly utilized mountings address the wide variety of application needs across the large HID installed base.
Lithonia “no drill” direct pole mounting	Saves up to 75% in installation costs by mounting onto most any existing drill pattern without the need of drilling additional holes.
Six Flood Optical Choices	AWFD, WFL, MFL, NFL, NSP, SP
DLC Premium listings	Maximizes utility rebates, lowering the initial costs.
Highly Efficient LED’s	With up to 155 LPW, RSXF can replace 70W to 1500W and save up to 77% in energy costs.
nLight® AIR Sensors 	nLight® AIR controls allow from-the-ground programming, motion sensor “group response”. Coupled with an nLight ECLYPSE®, scheduling and monitoring provide increased functionality and energy savings.

Size 1 Performance

Power Package	P1	P2	P3	P4	P5
Lumens (4000K, WFL)	7,169	9,941	14,154	16,446	22,897
Watts	51W	72W	109W	133W	164
LPW	141	138	130	124	140
Lumen Maintenance	L92 @ 100,000 Hours				
DLC	Premium!			Pending	
Replaces	175W	250W	400W	400W	400W



RSXF1



Size 2 Performance

Power Package	P1	P2	P3	P4	P5	P6	P7	P8
Lumens (4000K, WFL)	10,401	16,248	20,460	24,730	26,612	29,749	38,495	44,398
Watts	71W	111W	147W	187W	210W	244W	274W	326W
LPW	146	156	139	122	127	122	140	136
Lumen Maintenance	L92 @ 100,000 Hours							
DLC	Premium!						Pending	Pending
Replaces	250W	400W	400W	1000W	1000W	1000W	1000W	1000W



RSXF2



Size 3 Performance

Power Package	P1	P2	P3	P4
Lumens (4000K, R3)	27,283	30,185	35,346	40,448
Watts	194W	222W	266W	312W
LPW	141	136	133	130
Lumen Maintenance	L92 @ 100,000 Hours			
DLC	Premium!			
Replaces	400W - 1000W			



RSXF3



Size 4 Performance:

Power Package	P1	P2	P3	P4	P5	P6	P7	P8
Lumens (4000K WFL)	40,312	45,183	51,146	56,254	62,657	69,690	71,181	82,895
Watts	275W	320W	369W	431W	483W	546W	520W	646W
LPW	147	143	138	131	130	128	137	128
Lumen Maintenance	L92 @ 100,000 Hours							
DLC	Premium!							
Replaces	1000W or 1500W							



The Adjustable Mounting Configurations You Need:



RSXF Flood Yoke Mount



Yoke Mount
RSXF1, RSXF2 & RSXF3



Yoke Mount
RSXF4

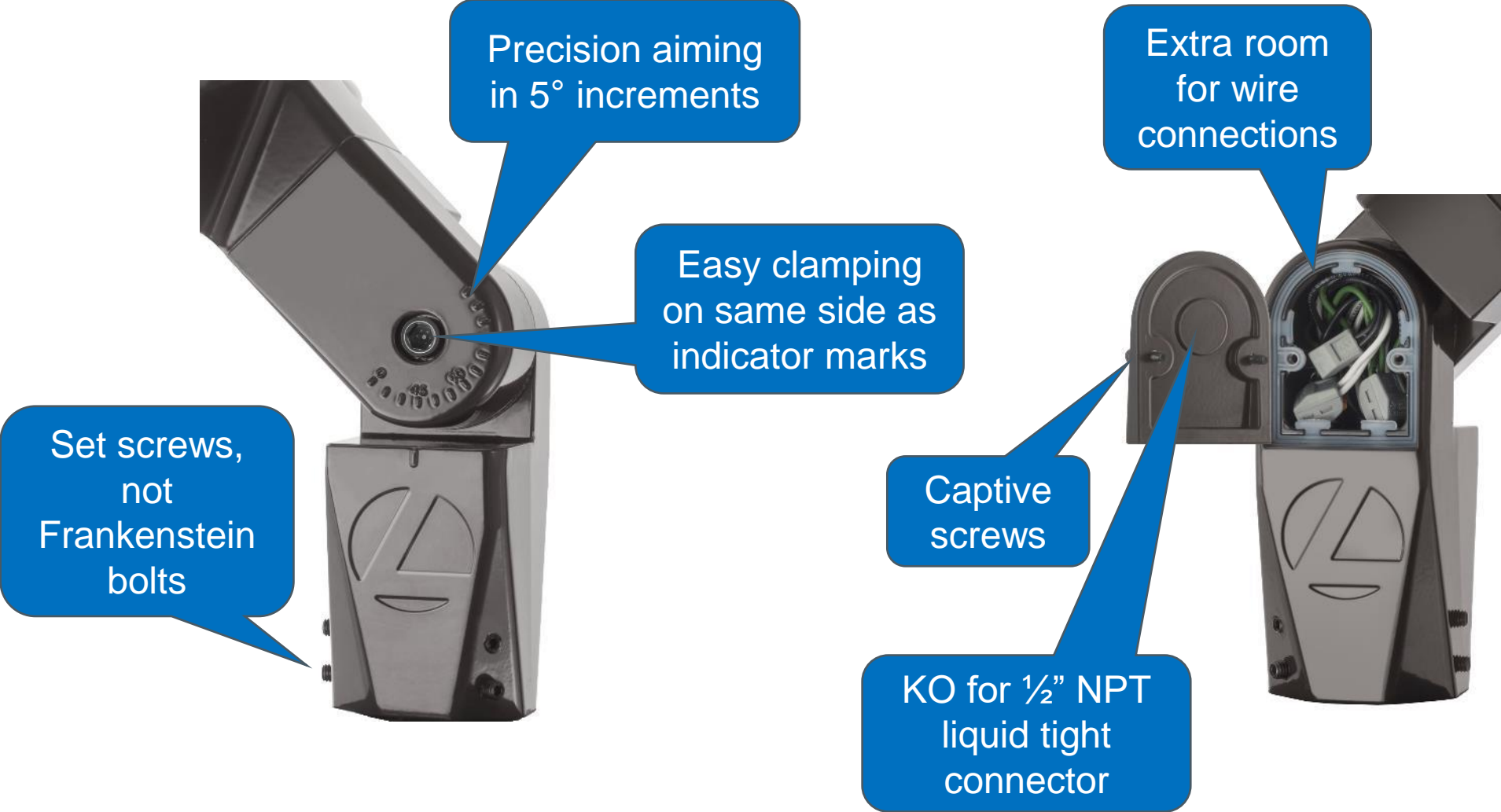
Adjustable Slipfitter:

Mounts on 2 3/8" OD
tenon for pole-top
lighting (downward
aiming)



Sample Nomenclature:
RSX2 LED P3 40K R3 MVOLT IS DDBXD

Slipfitter Mounting – Super Contractor-Friendly:



Adjustable Arm – Direct Pole Mount:

(AASP) – Adjustable Arm Square Pole Mounting

Or

(AARP) – Adjustable Arm Round Pole Mounting

**Uses RPA round pole adapter plate*



Features the RSX universal “no-drill” mounting mechanism that mates to 99% of existing mounting holes.

Sample Nomenclature:

RSX2 LED P6 40K R3 MVOLT **AASP DDBXD**

Acuity Brands.

Adjustable Mountings Make Installation Easy!



Not This!



This!

Adjustable Arm – Wall Mounting:



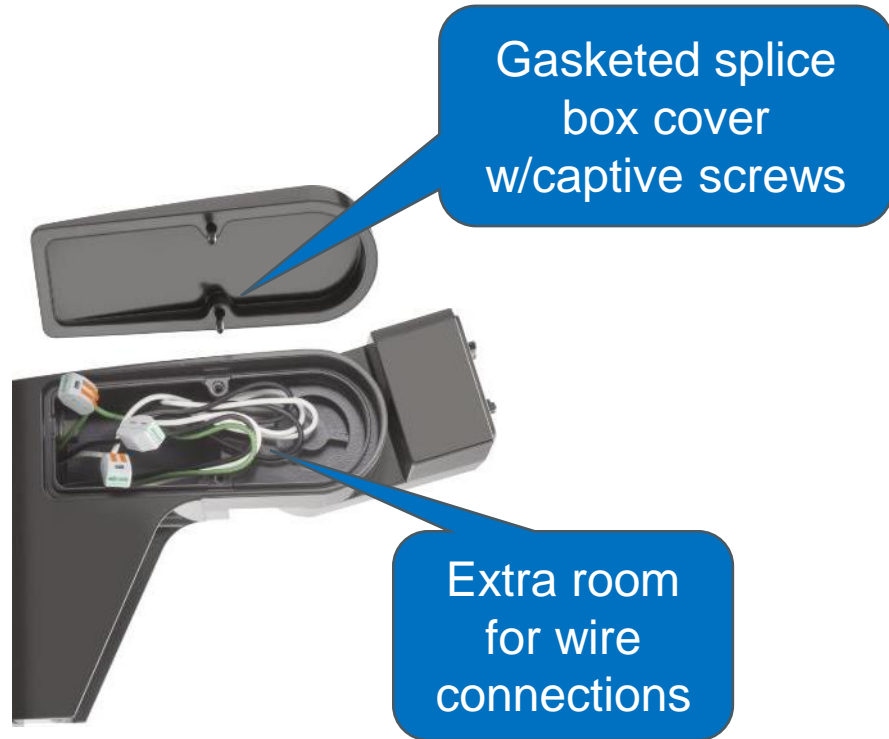
Sample Nomenclature:
RSX2 LED P6 40K R3 MVOLT **AAWB** DDBXD



$\frac{3}{4}$ " NPT female threads
& plugs on all four sides

Sample Nomenclature:
RSX2 LED P6 40K R3 MVOLT **AAWSC** DDBXD

Adjustable Arm – All Variations:



Applies To Following Mountings:

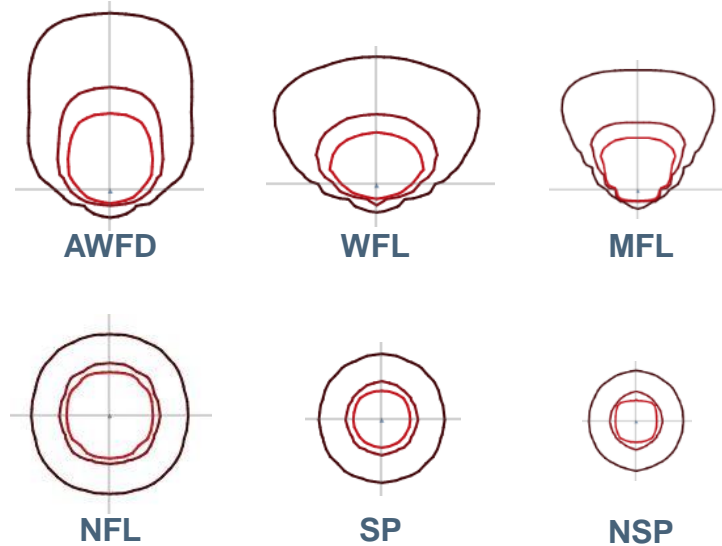
- AASP
- AARP
- AAWB
- AAWSC



The Optical Distributions You Need:

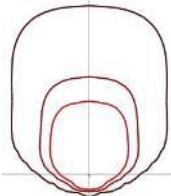
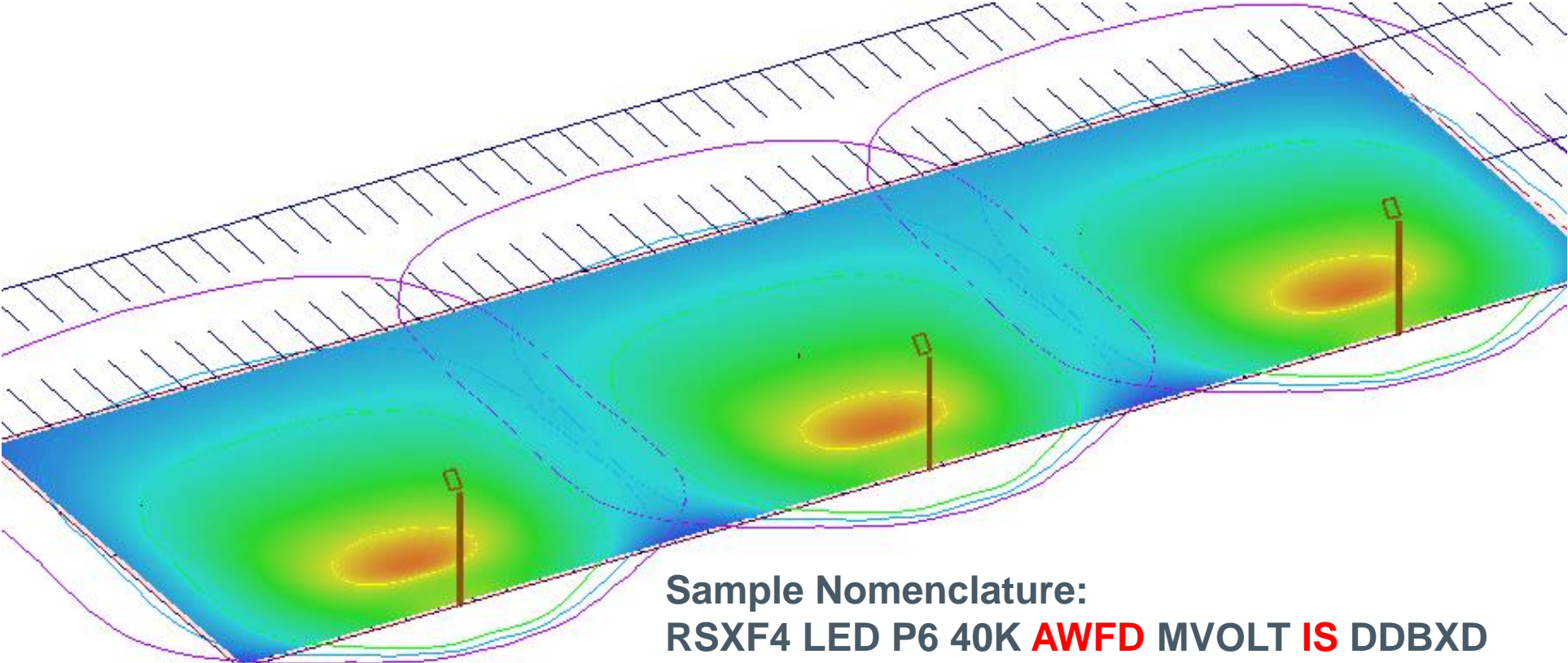


(6) Floodlighting Distributions



Perimeter Flood Lighting with the AWFD Optic:

The AWFD is a best-in-class solution and can be used for lighting truck yards and other applications that require strong forward throw when lighting from the perimeter.



AWFD

RSXF Floodlight Shielding Accessories:



UBV

Upper/Bottom Visor:
Ships separate as option
or may be ordered as an
accessory

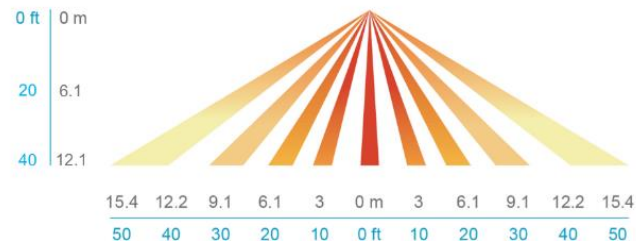


FV

Full Visor: Ships separate
as option or may be ordered
as an accessory

The Control Solutions You Need:

- nLight® AIR for ultimate control
- Out-of-box settings offer photocell on/off and occupancy dimming... *does not require programming*
- If changes are desired, from-the-ground sensor programming is available with the free CLAIRITY Pro app
- Grouping for sensor “group response”
- Mate with nLight® ECLYPSE® for scheduled dimming
- Connects to parking garage, industrial and indoor luminaires for site-wide control
- MVOLT and HVOLT configurations
- Up to 40-foot mounting heights



Other Control Solutions:



Button Photocell
(MVOLT and 347V)



7-pin Photocell
Receptacle

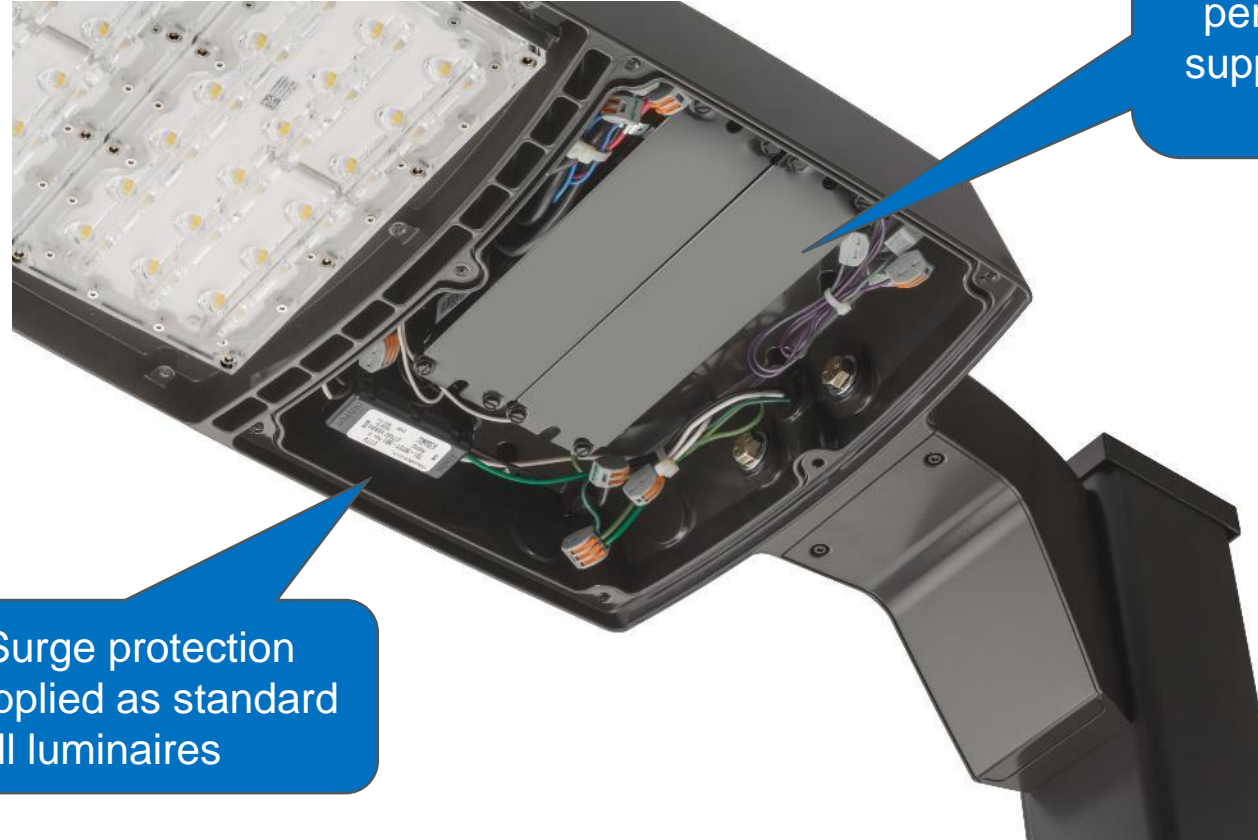


External
Photocell



Field Adjustable
Output Device

Only the Best Components:



RSX only uses major brand name drivers for superior performance and assured supply of replacement parts for years to come

10 KV Surge protection device supplied as standard in all luminaires

Contractor-Friendly Design:



Other Important Features and Benefits:

Feature	Benefit
L92 / 100,000 Hour LM	Exceptional lumen maintenance! 20-year expected service life!
IP66 Ingress Protection	Tongue and groove gasket ensures that the product will not leak.
Knuckle Set Screws	Clean appearance vs. “Frankenstein bolts”. The Adjustable Integral Slip-fitter (IS) is best knuckle design in the industry!
3G Vibration Tested	Super robust design on all mountings and sizes!
3000K Options	RSX has super-high 3000K LPW!
Super-Durable Finish	RSX features a zinc-infused Super Durable powder coat finish that has excellent gloss retention and corrosion resistance.
Acuity Brands 5-Year Warranty	Not just any warranty. This is a warranty from a trusted brand that has a history and financial stability that few can match. In a day where small suppliers come and go, and even large suppliers are bought and sold, Acuity stands alone in its commitment to the lighting industry.

RSXF is the Ideal Solution for the LED Renovation Market

One family does it all...

- More lumens – over 85,000 lumens plus!
- Largest breadth of flood optics and flood mounting configurations
- Best in class photometric performance
- nLight® AIR for energy savings and code compliance
- Priced for payback from a complete offering to dominate the HID renovation market
- Made in North America – 21-day delivery of configured products
- RSX is still the best value in LED area & flood lighting for one-for-one replacement of HID luminaires

Thank You

