

FEATURES & SPECIFICATIONS

INTENDED USE

Provides an LED lighting platform to deliver general or task lighting for residential and light commercial applications. Light engine delivers long life and excellent color to ensure a quality, low-maintenance light installation. Ideal for use in bathrooms, lavatories, hallways, corridors, stairways, utility areas and more.

CONSTRUCTION

The Contemporary Cylinder is constructed of an acrylic diffuser with housings available in three finishes including brushed nickel, and chrome. Matte Black finish only available in 2' length. The included canopy/ junction box cover is removable for a more low-profile look (2'-4' lengths only). The white acrylic diffuser provides even illumination and softens the appearance of the LEDs for improved aesthetics.

OPTICS

The FMVCCLS Contemporary Cylinder Vanity has an integrated switch to select 3000K, 3500K or 4000K color temperature at the time of installation.

1' delivers 800 lumens, 2' delivers 1690 lumens, 3' delivers 2450 lumens, and 4' delivers 3100 lumens at 3000K CCT with 50,000 hours of life. See table below for delivered lumens at the different CCT color switch settings.

Extruded acrylic diffuser is of highly transmissive material to minimize LED image and provides high-angle brightness control.

ELECTRICAL

Long-life LEDs, coupled with a multivolt and dual dimmable capable driver, provide extended service life. Standard input = 9.5 watts, (1'); 18 watts, (2'); 27 watts, (3'); 36 watts, (4'). Fixture is rated to deliver L70 performance at 50,000 hours and operates at 120-277 volts.

This fixture is dimmable by either triac or 0-10V dimming. Use with approved triac or 0-10V dimmer only.

LISTINGS

CSA listed to US and Canadian safety standards. Listed for damp locations. Can be used to comply with California Title 24 Part 6 JA8 Efficacy LED Light Source Requirements.

WARRANTY

5-year limited warranty. This is the only warranty provided and no other statements in this specification sheet create any warranty of any kind. All other express and implied warranties are disclaimed. Complete warranty terms located at: www.acuitybrands.com/support/warranty/terms-and-conditions

NOTE: Actual performance may differ as a result of end-user environment and application.

All values are design or typical values, measured under laboratory conditions at 25 °C.

Specifications subject to change without notice.

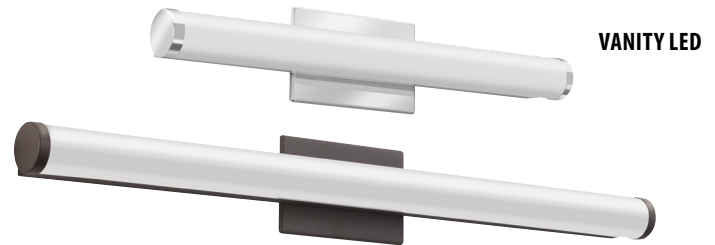
SPECIFICATIONS	1FT	2FT	3FT	4FT
Length	13-1/2 (343)	22-3/8 (568)	34-3/16 (868)	46 (1168)
Weight	1.5 (.68)	2.1 (.95)	2.5 (1.13)	3.1 (1.41)
3000K Lumens (LPW)	800 (84)	1690 (94)	2450 (93)	3100 (90)
3500K Lumens (LPW)	870 (92)	1800 (103)	2650 (104)	3500 (104)
4000K Lumens (LPW)	880 (92)	1850 (102)	2700 (102)	3550 (101)

All dimensions are inches (millimeters) unless otherwise indicated. Weights are pounds (kilograms).

Catalog Number
Notes
Type

Decorative Indoor

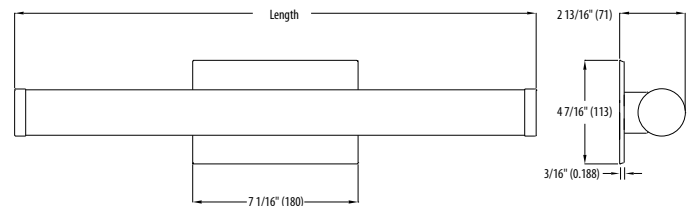
Contemporary Cylinder Vanity with Switchable White Color Temperature



VANITY LED



ADA



ORDERING INFORMATION

Example: FMVCCLS 12IN MVOLT 30K35K40K 90CRI BN

Series	Length	Voltage	Color temperature	CRI	Finish
FMVCCLS Contemporary Cylinder Vanity	12IN 1' Nominal ¹ 24IN 2' Nominal ² 36IN 3' Nominal ³ 48IN 4' Nominal ⁴	MVOLT MVOLT (120V-277V)	30K35K40K	90CRI >90	BN Brushed Nickel KR Chrome MB Matte Black

Notes

- 12IN only available with BN finish.
- 24IN available with all finishes.
- 36IN only available with BN and KR finishes.
- 48IN only available with BN and KR finishes.

LED Vanity Contemporary Cylinder

PHOTOMETRICS

Distribution Curve

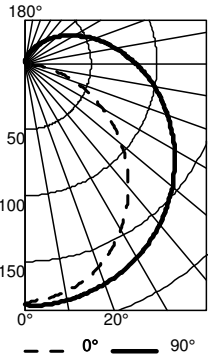
Distribution Data

Output Data

Coefficient of Utilization

Illuminance Data at 30" Above Floor for a Single Luminaire

FMVCCLS 12IN, input watts 9.61 test no. ISF 37684



CP Summary

	0°	90°
0°	183	183
5°	179	184
15°	171	180
25°	155	174
35°	134	165
45°	110	153
55°	82	138
65°	54	123
75°	27	107
85°	5	92
90°	0	84

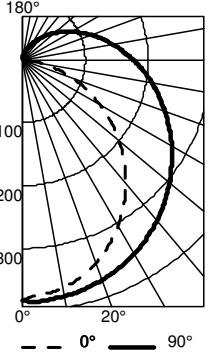
Coefficients of Utilization

pc	pw	20%								
		80%			70%			50%		
		70%	50%	30%	50%	30%	10%	50%	30%	10%
0	115	115	115	110	110	110	101	101	101	
1	101	96	90	91	87	82	84	80	76	
2	91	82	74	78	71	65	72	66	61	
3	83	71	62	68	60	53	62	55	50	
4	75	62	53	60	51	44	55	47	42	
5	69	55	46	53	44	38	49	41	36	
6	63	50	40	48	39	33	44	36	31	
7	59	45	36	43	35	29	40	32	27	
8	54	41	32	39	31	25	36	29	24	
9	51	37	29	36	28	23	33	26	21	
10	48	34	26	33	25	20	31	24	19	

Zonal Lumen Summary

Zone	Lumens	% Lamp	% Fixture
0° - 30°	144	17.4	17.4
0° - 40°	238	28.8	28.8
0° - 60°	443	53.4	53.4
0° - 90°	675	81.5	81.5
90° - 120°	113	13.7	13.7
90° - 130°	132	15.9	15.9
90° - 150°	150	18.0	18.0
90° - 180°	154	18.5	18.5
0° - 180°	829	100.0	100.0

FMVCCLS 24IN, input watts 18.12, test no. ISF 37684



CP Summary

	0°	90°
0°	382	382
5°	375	384
15°	358	378
25°	325	365
35°	281	345
45°	229	320
55°	172	289
65°	113	258
75°	56	225
85°	10	193
90°	1	176

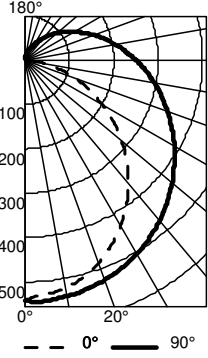
Coefficients of Utilization

pc	pw	20%								
		80%			70%			50%		
		70%	50%	30%	50%	30%	10%	50%	30%	10%
0	115	115	115	110	110	110	101	101	101	
1	101	96	90	91	87	82	84	80	76	
2	91	82	74	78	71	65	72	66	61	
3	83	71	62	68	60	53	62	55	50	
4	75	62	53	60	51	44	55	47	42	
5	69	55	46	53	44	38	49	41	36	
6	63	50	40	48	39	33	44	36	31	
7	59	45	36	43	35	29	40	32	27	
8	54	41	32	39	31	25	36	29	24	
9	51	37	29	36	28	23	33	26	21	
10	48	34	26	33	25	20	31	24	19	

Zonal Lumen Summary

Zone	Lumens	% Lamp	% Fixture
0° - 30°	301	17.4	17.4
0° - 40°	500	28.8	28.8
0° - 60°	927	53.4	53.4
0° - 90°	1415	81.5	81.5
90° - 120°	238	13.7	13.7
90° - 130°	276	15.9	15.9
90° - 150°	313	18.0	18.0
90° - 180°	322	18.5	18.5
0° - 180°	1737	100.0	100.0

FMVCCLS 36IN, input watts 26.39, test no. ISF 37684



CP Summary

	0°	90°
0°	542	542
5°	531	544
15°	507	535
25°	461	517
35°	398	489
45°	325	453
55°	244	410
65°	160	365
75°	79	318
85°	14	273
90°	1	250

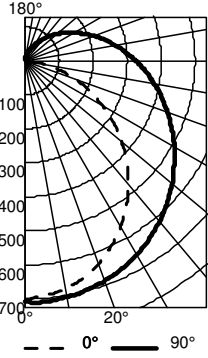
Coefficients of Utilization

pc	pw	20%								
		80%			70%			50%		
		70%	50%	30%	50%	30%	10%	50%	30%	10%
0	115	115	115	110	110	110	101	101	101	
1	101	96	90	91	87	82	84	80	76	
2	91	82	74	78	71	65	72	66	61	
3	83	71	62	68	60	53	62	55	50	
4	75	62	53	60	51	44	55	47	42	
5	69	55	46	53	44	38	49	41	36	
6	63	50	40	48	39	33	44	36	31	
7	59	45	36	43	35	29	40	32	27	
8	54	41	32	39	31	25	36	29	24	
9	51	37	29	36	28	23	33	26	21	
10	48	34	26	33	25	20	31	24	19	

Zonal Lumen Summary

Zone	Lumens	% Lamp	% Fixture
0° - 30°	427	17.4	17.4
0° - 40°	708	28.8	28.8
0° - 60°	1313	53.4	53.4
0° - 90°	2004	81.5	81.5
90° - 120°	336	13.7	13.7
90° - 130°	391	15.9	15.9
90° - 150°	444	18.0	18.0
90° - 180°	455	18.5	18.5
0° - 180°	2459	100.0	100.0

FMVCCLS 48IN, input watts 34.86, test no. ISF 37684



CP Summary

	0°	90°
0°	706	706
5°	692	710
15°	662	697
25°	601	675
35°	519	638
45°	424	591
55°	318	535
65°	209	476
75°	103	415
85°	18	356
90°	1	326

Coefficients of Utilization

pc	pw	20%								
		80%			70%			50%		
		70%	50%	30%	50%	30%	10%	50%	30%	10%
0	115	115	115	110	110	110	101	101	101	
1	101	96	90	91	87	82	84	80	76	
2	91	82	74	78	71	65	72	66	61	
3	83	71	62	68	60	53	62	55	50	
4	75	62	53	60	51	44	55	47	42	
5	69	55	46	53	44	38	49	41	36	
6	63	50	40	48	39	33	44	36	31	
7	59	45	36	43	35	29	40	32	27	
8	54	41	32	39	31	25	36	29	24	
9	51	37	29	36	28	23	33	26	21	
10	48	34	26	33	25	20	31	24	19	

Zonal Lumen Summary

Zone	Lumens	% Lamp	% Fixture
0° - 30°	557	17.4	17.4
0° - 40°	923	28.8	28.8
0° - 60°	1713	53.4	53.4
0° - 90°	2614	81.5	81.5
90° - 120°	439	13.7	13.7
90° - 130°	510	15.9	15.9
90° - 150°	579	18.0	18.0
90° - 180°	594	18.5	18.5
0° - 180°	3208	100.0	100.0

LED Vanity Contemporary Cylinder

COMPATIBLE DIMMERS

The FMVCLS is designed to operate with most standard Triac Based dimmers and is compatible with 0-10v dimming systems. The following is a list of dimmers tested and does not imply any guarantee or warranty of compatibility with a particular application. Unlisted dimmers do not imply non-compatibility.

Manufacturer	Part number(s)
Lutron	DVELV-300P
	300P SELV
	NTELV-300P
	NLV-600
Leviton	6633-PA
	6615-P
Synergy/Leviton	ISD 400 ELV 120 / IPE04