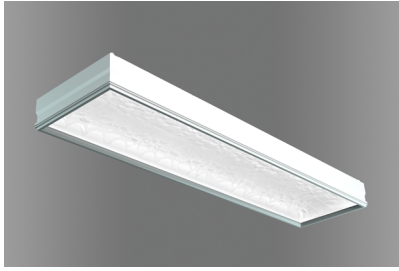


MARK ARCHITECTURAL LIGHTING™



CHISEL 1'X4'

Recessed – Static White

CHISEL reveals the shape of light with soft luminous gradients and textures that add depth and character to any design. 5 forms, 4 luminous effects and 3 textured patterns allow for endless options to create clusters and unique layouts that deliver high quality volumetric lighting for practical performance and design impact.

Type:

Project:

Catalog Number:

DO NOT TYPE HERE. Autopopulated field.

Specification Features

Housing

Extruded aluminum housing. 1'x4' 20 lbs.

Finish

Painted after fabrication, high reflectance matte white.

Reflector

High-impact, 97% reflective vacuum-formed polymer reflector with textured pattern and satin white finish.

Mounting

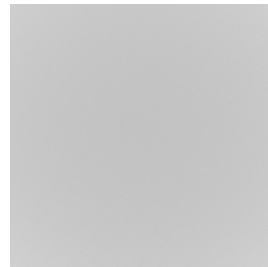
Recessed. Available 9/16" and 15/16" flat, 9/16" screw slot or 9/16" narrow.

See page 2 for additional specifications.

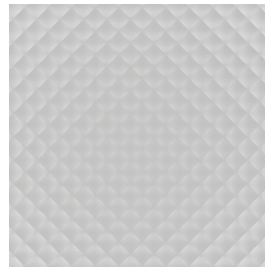
UGR

Data available on page 4.

Texture



MNML

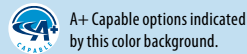
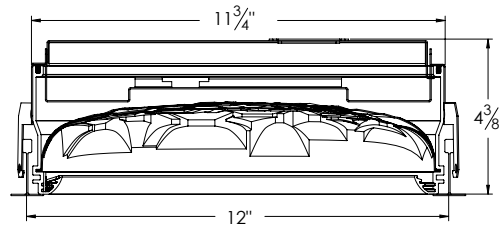


WVE



PYR

Section View



Ordering

Example: CHSL 1X4 G9 80CRI 35K 2000LM PYR 1SD DARK 120 ZT

CHSL	1X4				
Series	Size	Ceiling Trim	LED Color Rendering	LED Color Temp	LED Output²
CHSL	1X4 1'X4'	DF¹ Tegular tee slot G9 9/16" inverted tee G15 15/16" inverted tee	80CRI 80+ CRI 90CRI 90+ CRI	27K 2700K 30K 3000K 35K 3500K 40K 4000K 50K 5000K 65K 6500K	1000LM 1000 Lumens 1500LM 1500 Lumens 2000LM 2000 Lumens 2500LM 2500 Lumens 3000LM 3000 Lumens 3500LM 3500 Lumens 4000LM 4000 Lumens
Texture	Directional Gradient	Minimum Dimming Level	Voltage	Emergency Options	Control Input
MNML Minimalist WVE Weave PYR Pyramid	1SD³ Side 2SDP³ Parallel 2SDPI⁴ Parallel, Individual Control (see page 2)	DARK⁵ Constant Current, Dimming to < 1% MIN1⁶ Constant Current, Dimming to 1%	120 120V 277 277V 347 347V	E10WCP⁷ 10-watt emergency battery pack EMG²⁸ Emergency generator power	ZT 0-10V NLIGHT nLight enabled NLTAIR2 nLight Air DALI DALI DMX DMX512/RDM ECOD Lutron Hi-Lume Digital driver
					Options
					CP⁹ Chicago plenum PWS 6' pre-wire, 3/8" diameter, 18 gauge

Notes

- Available for 9/16" grid only.
- See table for delivered lumens/fixture.
- Incorporates longest side of luminaire.
- Available with DMX and max lumen package only.
- DARK not available with ECOD.
- MIN1 not available with NLIGHT, NLTAIR2 or DALI.
- Not available with 347 option.
- EMG option requires a connection to existing powered nLight network. Power is provided from a separate nLight fixture.
- Not available with NLIGHT, NLTAIR2, or DMX options.

Specification Features (continued)

Electrical

Long-life LEDs, coupled with high-efficiency drivers, provide superior quantity and quality of illumination for extended service life. 80% LED lumen maintenance at 60,000 hours (L80/60,000).

Color Consistency

The Acuity Brands circuit boards for the linear LED components use a precise binning algorithm which creates a consistent color temperature from board to board. Color variation is no greater than a 2.5 Step MacAdam (2.5SDCM) along the black body locus from board to board.

Driver

eldoLED® driver provides natural dimming with smooth, continuous and flicker-free deep dimming. Supports operation between 120VAC and 277 VAC, with low inrush current (NEMA 410) and THD < 20%. Meets FCC Title 47 C.F.R. 15 Class A or Class B requirements. Lutron high performance driver options also available.

Integrated Controls

Optional nLight® embedded controls make luminaire addressable- allowing it to digitally communicate with other nLight enabled controls such as dimmers, switches, occupancy sensors and photocontrols. Simply connect all the nLight enabled control devices using standard CAT5 Cabling. (Input option: NLIGHT)

Certification

UL Certified to meet U.S. and Canadian standards, rated for damp locations.

A+ Capable Luminaire

This item is an A+ capable luminaire, which has been designed and tested to provide consistent color appearance and out-of-the-box control compatibility with simple commissioning.

- All configurations of this luminaire meet the Acuity Brands' specification for chromatic consistency
- This luminaire is part of an A+ Certified solution for nLight® control networks when ordered with drivers marked by a [shaded background](#)*
- This luminaire is part of an A+ Certified solution for nLight control networks, providing advanced control functionality at the luminaire level, when selection includes driver and control options marked by a [shaded background](#)*

To learn more about A+, [visit www.acuitybrands.com/aplus](http://www.acuitybrands.com/aplus).

*See ordering tree for details

Warranty

5-year limited warranty. This is the only warranty provided and no other statements in this specification sheet create any warranty of any kind. All other express and implied warranties are disclaimed. Complete warranty terms located at: www.acuitybrands.com/support/warranty/terms-and-conditions

Note: Actual performance may differ as a result of end-user environment and application.

All values are design or typical values, measured under laboratory conditions at 25 °C.

Specifications subject to change without notice.

Directional Gradient

Fixture Performance

	Directional Gradient	Delivred Lumens	Inputs Watts	Lumens/ Watts
1000LM	1SD	805	7.5	107
1000LM	2SD	784	7.3	107
1500LM	1SD	1334	12.5	106
1500LM	2SD	1322	12.4	107
2000LM	1SD	1909	17.7	108
2000LM	2SD	1899	17.3	110
2500LM	1SD	2256	20.8	108
2500LM	2SD	2270	20.3	112
3000LM	1SD	2817	26.0	108
3000LM	2SD	2855	25.4	113
3500LM	1SD	3200	30.0	107
3500LM	2SD	3259	29.2	112
4000LM	1SD	3685	34.9	105
4000LM	2SD	3809	34.3	111

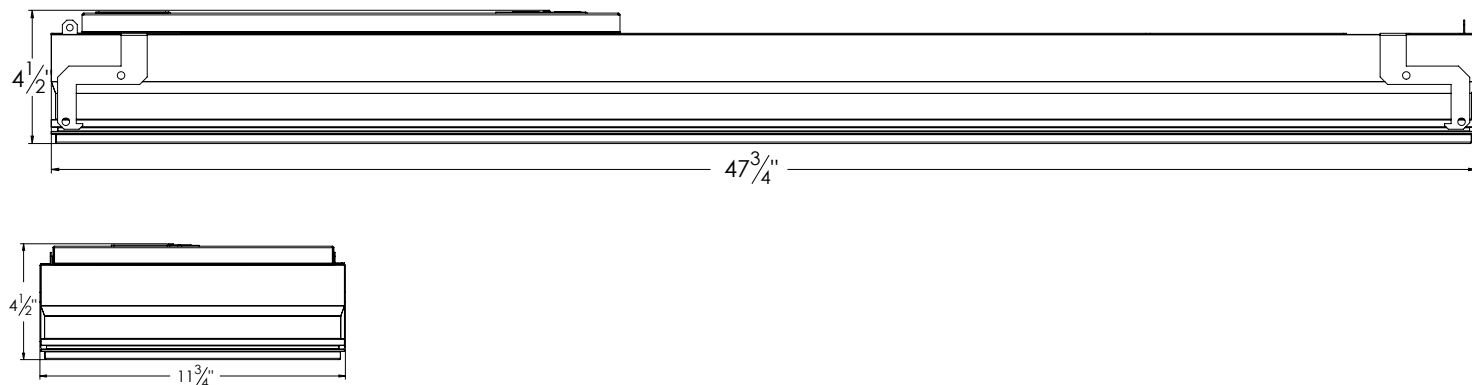


1SD

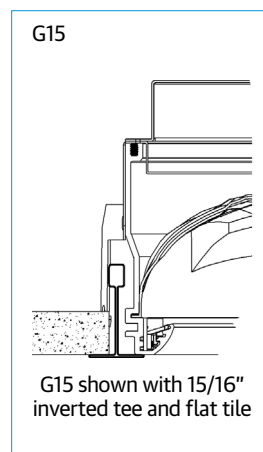
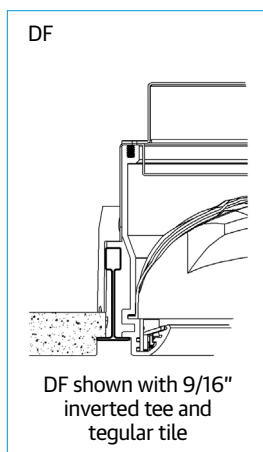
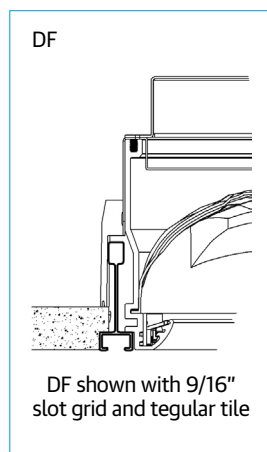
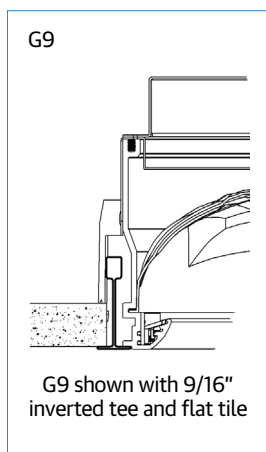


2SDP

Technical Drawing

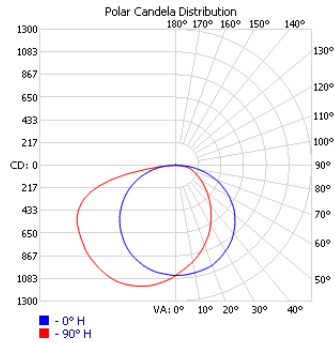


Ceiling Trim



Photometrics

CHSL 1X4 DF 80CRI 35K 4000LM MNML 1SD DARK 120V ZT, 3791 delivered lumens, 35.7 watts, Test no. ISF183007, tested in accordance to IESNA LM-79



Zonal Lumen Summary		
Zone	Lumens	% Luminaire
0-30	843.9	22.30%
0-40	1408.5	37.20%
0-60	2640.5	69.80%
60-90	1124.9	29.70%
70-100	571	15.10%
90-120	8.5	0.20%
0-90	3765.4	99.60%
90-180	16	0.40%
0-180	3781.5	100%

Angle	Candlepower Distribution									
	Plane									
	0	22.5	45	67.5	90	112.5	135	157.5	180	
0	1054	1054	1054	1054	1054	1054	1054	1054	1054	0
5	1052	1038	1020	1002	992	997	1005	1020	1045	5
10	1043	1015	973	948	937	938	960	994	1039	10
15	1032	981	926	889	873	882	907	956	1021	15
20	1018	941	874	827	808	821	854	912	994	20
25	986	895	811	760	740	747	792	863	963	25
30	947	841	742	686	664	676	723	803	922	30
35	908	779	674	610	590	606	655	743	873	35
40	858	713	600	541	520	530	587	679	819	40
45	800	641	527	467	449	461	511	604	759	45
50	735	562	453	400	385	396	440	532	694	50
55	665	484	381	340	327	336	372	460	623	55
60	587	401	314	281	275	279	306	381	548	60
65	501	321	251	233	228	233	248	307	466	65
70	413	243	197	192	191	193	198	236	385	70
75	318	171	152	153	156	155	154	168	295	75
80	218	107	109	112	113	115	114	114	207	80
85	117	54	55	54	56	60	65	66	118	85
90	1	1	3	3	6	7	8	10	16	90

Lumen Package	UGR (70% 50% 20% reflectance using a 4H x 8H room size)			
	Crosswise		Endwise	
	1SD	2DSP	1SD	2DSP
2000LM		18.8		22.1
2500LM	20	19.4	16	22.8
3000LM	20.8	20.2	16.8	23.6
3500LM	21.2	20.6	17.2	24
4000LM	21.7	21.2	17.7	24.6

UGR varies based on luminaire options and is affected by application dependent parameters. Numbers depicted here are considered "Luminaire-UGR" and/or "Point-UGR" values. To determine a more precise maximum UGR value ("Application-UGR"), a full lighting design layout should be completed with the selected luminaire configuration for each application. Click here for more information on [UGR](#).