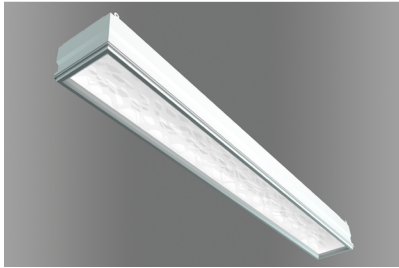


MARK ARCHITECTURAL LIGHTING™



CHISEL 6"X4' Recessed – Static White

CHISEL reveals the shape of light with soft luminous gradients and textures that add depth and character to any design. 5 forms, 4 luminous effects and 3 textured patterns allow for endless options to create clusters and unique layouts that deliver high quality volumetric lighting for practical performance and design impact.

Type:

Project:

Catalog Number:

DO NOT TYPE HERE. Autopopulated field.

Specification Features

Housing

Extruded aluminum housing. 2'x2' 20 lbs.

Finish

Painted after fabrication, high reflectance matte white.

Reflector

High-impact, 97% reflective vacuum-formed polymer reflector with textured pattern and satin white finish.

Mounting

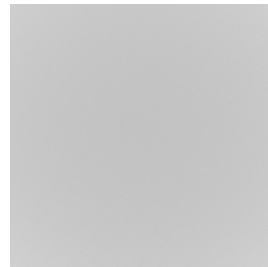
Recessed. Available 9/16" and 15/16" flat, 9/16" screw slot or 9/16" narrow.

See page 2 for additional specifications.

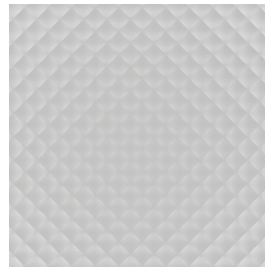
UGR

Data available on page 4.

Texture



MNML

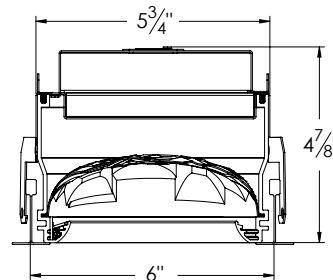


WVE



PYR

Section View



Declare.

eldoLED

your product | our drive



A+ Capable options indicated by this color background.

Ordering

Example: CHSL 6X4 G9 80CRI 35K 2000LM WVE 1SD DARK 120 ZT

CHSL	6X4				
Series	Size	Ceiling Trim	LED Color Rendering	LED Color Temp	LED Output ²
CHSL	6X4 6"X4'	DF¹ Regular tee slot G9 9/16" inverted tee G15 15/16" inverted tee	80CRI 80+ CRI 90CRI 90+ CRI	27K 2700K 30K 3000K 35K 3500K 40K 4000K 50K 5000K 65K 6500K	1000LM 1000 Lumens 1500LM 1500 Lumens 2000LM 2000 Lumens 2500LM 2500 Lumens 3000LM 3000 Lumens 3500LM 3500 Lumens 4000LM 4000 Lumens
Texture	Directional Gradient	Minimum Dimming Level	Voltage	Emergency Options	Control Input
MNML Minimalist WVE Weave PYR Pyramid	1SD³ Side (see page 2)	DARK⁴ Constant Current, Dimming to < 1% MINI⁵ Constant Current, Dimming to 1%	120 120V 277 277V 347 347V	E10WCP⁶ 10-watt emergency battery pack EMG^{6,7} Emergency generator power	ZT 0-10V NLIGHT nLight enabled NLTAIR2 nLight Air DALI DALI DMX DMX512/RDM ECOD Lutron Hi-Lume Digital driver
				Options	
				CP⁸ Chicago plenum	PWS 6' pre-wire, 3/8" diameter, 18 gauge

Notes

- Available for 9/16" grid only.
- See table for delivered lumens/fixture.
- Incorporates longest side of luminaire.
- DARK not available with ECOD.
- MINI not available with NLIGHT, NLTAIR2 or DALI.
- Not available with 347 option.
- EMG option requires a connection to existing powered nLight network. Power is provided from a separate nLight fixture.
- Not available with NLIGHT, NLTAIR2, or DMX options.

Specification Features (continued)

Electrical

Long-life LEDs, coupled with high-efficiency drivers, provide superior quantity and quality of illumination for extended service life. 80% LED lumen maintenance at 60,000 hours (L80/60,000).

Color Consistency

The Acuity Brands circuit boards for the linear LED components use a precise binning algorithm which creates a consistent color temperature from board to board. Color variation is no greater than a 2.5 Step MacAdam (2.5SDCM) along the black body locus from board to board.

Driver

eldoLED® driver provides natural dimming with smooth, continuous and flicker-free deep dimming. Supports operation between 120VAC and 277 VAC, with low inrush current (NEMA 410) and THD < 20%. Meets FCC Title 47 C.F.R. 15 Class A or Class B requirements. Lutron high performance driver options also available.

Integrated Controls

Optional nLight® embedded controls make luminaire addressable- allowing it to digitally communicate with other nLight enabled controls such as dimmers, switches, occupancy sensors and photocontrols. Simply connect all the nLight enabled control devices using standard CAT5 Cabling. (Input option: NLIGHT)

Certification

UL Certified to meet U.S. and Canadian standards, rated for damp locations.

A+ Capable Luminaire

This item is an A+ capable luminaire, which has been designed and tested to provide consistent color appearance and out-of-the-box control compatibility with simple commissioning.

- All configurations of this luminaire meet the Acuity Brands' specification for chromatic consistency
- This luminaire is part of an A+ Certified solution for nLight® control networks when ordered with drivers marked by a **shaded background***
- This luminaire is part of an A+ Certified solution for nLight control networks, providing advanced control functionality at the luminaire level, when selection includes driver and control options marked by a **shaded background***

To learn more about A+, [visit www.acuitybrands.com/aplus](http://www.acuitybrands.com/aplus).

*See ordering tree for details

Warranty

5-year limited warranty. This is the only warranty provided and no other statements in this specification sheet create any warranty of any kind. All other express and implied warranties are disclaimed. Complete warranty terms located at: www.acuitybrands.com/support/warranty/terms-and-conditions

Note: Actual performance may differ as a result of end-user environment and application.

All values are design or typical values, measured under laboratory conditions at 25 °C.

Specifications subject to change without notice.

Directional Gradient

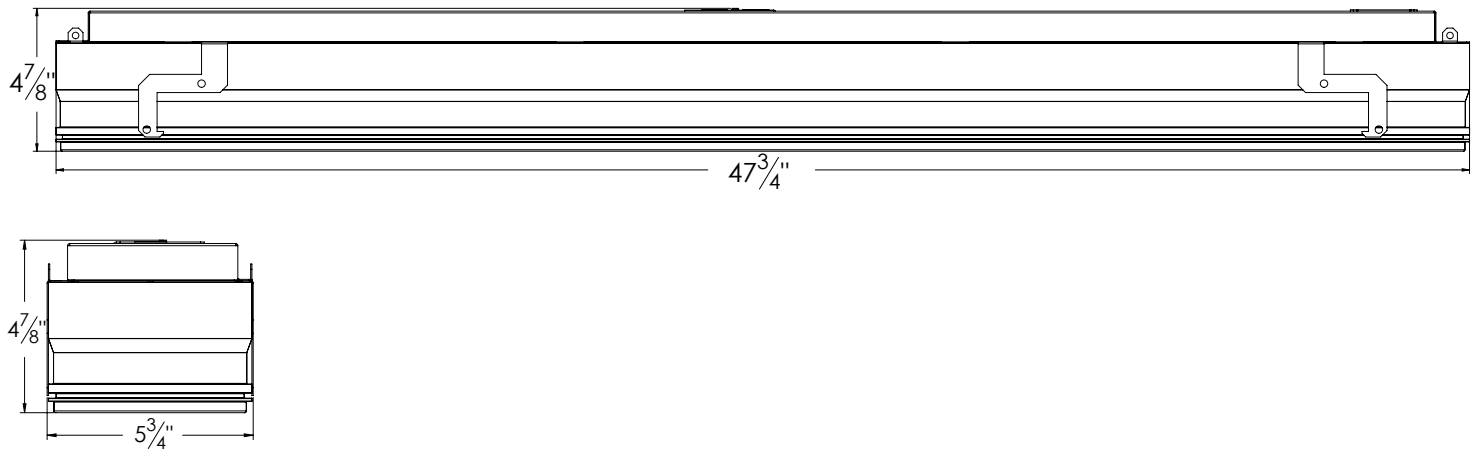
Fixture Performance

	Directional Gradient	Delivred Lumens	Inputs Watts	Lumens/ Watts
1000LM	1SD	779	7.5	104
1500LM	1SD	1289	12.5	103
2000LM	1SD	1845	17.7	104
2500LM	1SD	2181	20.8	105
3000LM	1SD	2723	26.0	105
3500LM	1SD	3093	30.0	103
4000LM	1SD	3562	35.7	100

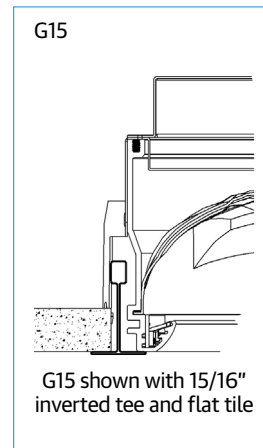
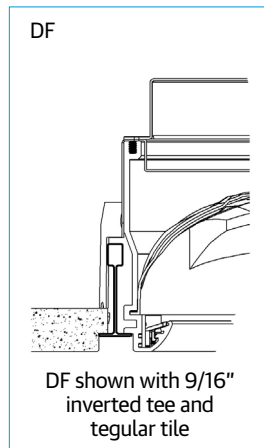
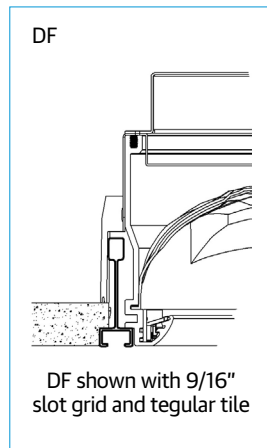
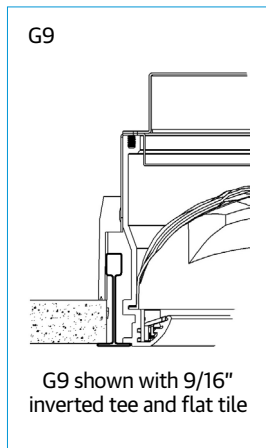


1SD

Technical Drawing



Ceiling Trim

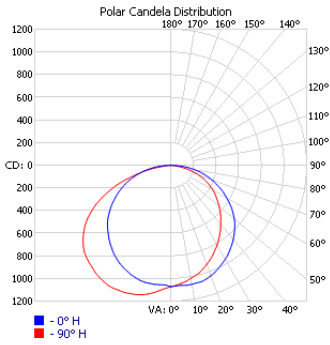


MARK
ARCHITECTURAL
LIGHTING™

CHISEL 6"X4'
Recessed – Static White

Photometrics

CHSL 6X4 DF 80CRI 35K 4000LM MNML 1SD DARK 120V ZT, 3616 delivered lumens, 35.6 watts, Test no. ISF182989, tested in accordance to IESNA LM-79



Zonal Lumen Summary		
Zone	Lumens	% Luminaire
0-30	876.3	24.20%
0-40	1461.8	40.40%
0-60	2716.7	75.10%
60-90	891.5	24.70%
70-100	384.5	10.60%
90-120	4.1	0.10%
0-90	3608.2	99.80%
90-180	7.9	0.20%
0-180	3616.1	100%

Angle	Candlepower Distribution								
	Plane								
	0	22.5	45	67.5	90	112.5	135	157.5	180
0	1072	1072	1072	1072	1072	1072	1072	1072	1072
5	1064	1057	1058	1051	1046	1050	1058	1064	1058
10	1067	1045	1032	1020	1014	1024	1036	1053	1059
15	1062	1027	1005	986	981	989	1010	1030	1051
20	1037	988	964	936	930	942	966	995	1027
25	1001	939	910	884	877	887	912	951	994
30	960	890	848	821	817	824	852	899	954
35	911	833	784	755	752	760	787	839	904
40	858	772	720	691	685	693	722	777	849
45	797	708	652	628	623	629	651	705	789
50	732	638	582	563	555	562	583	636	724
55	656	556	508	497	490	495	510	558	647
60	567	475	437	432	425	428	440	477	563
65	483	388	368	361	355	356	368	390	480
70	396	307	293	286	274	282	298	310	394
75	301	229	215	193	184	194	215	228	297
80	207	147	123	101	96	100	122	149	202
85	107	57	35	29	25	29	38	60	103
90	2	3	2	2	1	3	4	4	4

Lumen Package	UGR (70% 50% 20% reflectance using a 4H x 8H room size)	
	Crosswise	Endwise
	1SD	1SD
1000LM	15.8	14.4
1500LM	17.6	16.2
2000LM	18.8	17.4
2500LM	19.4	18
3000LM	20.2	18.8
3500LM	20.6	19.2
4000LM	21.1	19.7

UGR varies based on luminaire options and is affected by application dependent parameters. Numbers depicted here are considered "Luminaire-UGR" and/or "Point-UGR" values. To determine a more precise maximum UGR value ("Application-UGR"), a full lighting design layout should be completed with the selected luminaire configuration for each application. Click here for more information on [UGR](#).