



Project: \_\_\_\_\_

Fixture Type: \_\_\_\_\_

Location: \_\_\_\_\_

Contact/Phone: \_\_\_\_\_

# JUNO RED SERIES™ DOWNLIGHT

## 4" IC RATED LED NEW CONSTRUCTION FOR INSTALLATION INTO FIRE RATED CEILING ASSEMBLIES IC1JBPF 4JBLDT



### PRODUCT DESCRIPTION

4" IC LED Air-Loc® new construction junction box plaster frame housing with energy efficient LED downlight trim module for a complete downlight solution

- May be installed in maximum 2 hour fire-rated ceiling assemblies per International Building Code Section 714
- Can be completely covered with insulation
- Dimmable
- Designed to provide 50,000 hours of life
- 5 year limited warranty on LED components.

### PRODUCT SPECIFICATIONS

**Downlight Trim** Cast aluminum baffle or cone trim with integral flange

- All-in-one design where LED light engine mounts directly to trim for ease of installation
- Diffusing lens conceals the LEDs from direct view and provides uniform aperture luminance
- Provided with push-in friction springs
- White finish

**LED Light Engine Trim Module** LED array attached to die cast trim provides superior heat transfer to ensure long life of the LED

- LEDs are binned within a 3-step MacAdam Ellipse exceeding
- 2700K, 3000K, 3500K and 4000K color temperatures with 90 CRI minimum
- Features a plug-in connector for easy installation with IC1JBPF housing.

**LED Driver** Choice of dedicated 120 volt driver or universal voltage drivers that accommodate input voltages from 120-277 volts AC at 50/60Hz

- Power factor > 0.9 at 120V input
- 120 volt only driver is dimmable with the use of most incandescent, magnetic low voltage and electronic low voltage wall box dimmers
- Universal voltage drivers are dimmable with the use of most 0-10V wall box dimmers
- For a list of compatible dimmers, see [JUNOICLED-DIM](#).

**Life** Rated for 50,000 hours at 70% lumen maintenance.

**Labels** Certified to the high efficacy requirements of California T24

- Assembly ETL listed to UL1598 for US and Canadian through branch wiring, damp location
- Suitable for wet locations (indoor covered ceiling)
- ETL listed to UL514A
- Air-Loc.

**Testing** All reports are based on published industry procedures; field performance may differ from laboratory performance.

Actual performance may differ as a result of end-user environment and application. All values are design or typical values, measured under laboratory conditions at 25°C. Specifications subject to change without notice.

### HOUSING FEATURES

**Housing** Designed for use in IC (insulated ceiling) or non-IC construction

- Painted steel 3-1/2" deep 4" square housing fully assembled to plaster frame for ease of installation. For use with 5/8" to 1-1/4" ceiling thickness

**Wiring Compartment** Pre-wired junction box provided with (5) 1/2" and (1) 3/4" knockouts, (4) knockouts for 12/2 or 14/2 NM cable and ground wire

- ETL listed for through branch wiring, maximum 8 # 12 branch circuit conductors
- Provided with removable access plates
- Knockouts equipped with pryout slots
- Quick connect electrical connectors supplied as standard for fast, secure installation

**Mounting Frame** 22-gauge die-formed galvanized steel mounting frame

- Pre-installed Air-Loc gasket

**Hardware** Ships with trim mounting bracket and trim ring.

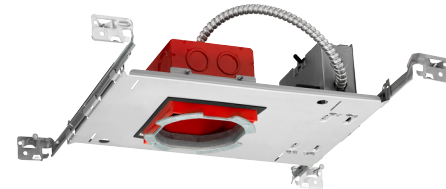
### INSTALLATION

Must be installed per the International Building Code Section 714 guidelines to maintain up to a 2 hour ceiling fire rating. Precise ceiling cutout required.

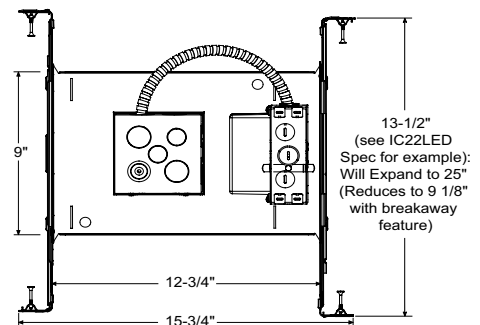
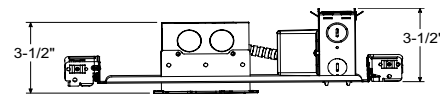
**Real Nail 3 Bar Hangers** Telescoping Real Nail 3® system permits quick placement of housing anywhere within 24" O.C. joists or suspended ceilings

- Bars scored in two locations for fast, clean breaking, allowing housing installation in tight applications
- Captive bugle-headed ring shank nail for quick one-step installation and easy removal with claw hammer for fixture relocation
- Integral T-bar notch for suspended ceilings
- Locking set screw to lock junction box housing in position
- Design covered under US Patent D552,969.

### DIMENSIONS

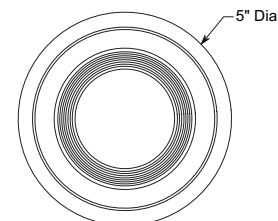
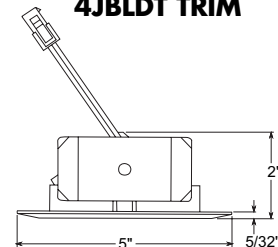


IC1JBPF



4 1/4" SQUARE CEILING CUTOUT MAX

4JBLDT TRIM



Retrofit Mounting Bracket and Trim Ring

# 4" IC RATED LED NEW CONSTRUCTION JUNO RED SERIES™ DOWNLIGHT

FOR INSTALLATION INTO FIRE RATED CEILING ASSEMBLIES

## IC1JBPF 4JBLDT

### ELECTRICAL DATA

	700LM		700LM		700LM	
	120V		MVOLT EZ10 and EZ1		MVOLT ZT10 and ZT1	
	120V	120V	277V	120V	277V	
Input Power	10W (+/- 5%)	7.3W (+/- 5%)	7.8W (+/- 5%)	9.3W (+/- 5%)	9.8W (+/- 5%)	
Input Current - Max	.09A	.08A	.04A	.08A	.04A	
Frequency	50/60Hz	50/60Hz	50/60Hz	50/60Hz	50/60Hz	
EMI/RFI	FCC Title 47 CFR, Part 15, Class B(residential)	FCC Title 47 CFR, Part 15, Class B(residential)	FCC Title 47 CFR, Part 15, Class B(residential)	FCC Title 47 CFR, Part 15, Class B(residential)	FCC Title 47 CFR, Part 15, Class B(residential)	
Minimum Starting Temp	-25C	-20C	-20C	-20C	-20C	

### ELECTRICAL DATA

	1000LM		1000LM		1000LM	
	120V FRPC		MVOLT EZ10 and EZ1		MVOLT ZT10 and ZT1	
	120V	120V	277V	120V	277V	
Input Power	15.1W (+/- 5%)	13.7W (+/- 5%)	14.2W (+/- 5%)	15.6W (+/- 5%)	16.1W (+/- 5%)	
Input Current - Max	.13A	.13A	.07A	.13A	.07A	
Frequency	50/60Hz	50/60Hz	50/60Hz	50/60Hz	50/60Hz	
EMI/RFI	FCC Title 47 CFR, Part 15, Class B(residential)	FCC Title 47 CFR, Part 15, Class B(residential)	FCC Title 47 CFR, Part 15, Class B(residential)	FCC Title 47 CFR, Part 15, Class B(residential)	FCC Title 47 CFR, Part 15, Class B(residential)	
Minimum Starting Temp	-25C	-20C	-20C	-20C	-20C	

### ORDERING INFORMATION

Housing and trim ordered separately.

#### HOUSING:

Ordering Example: IC1JBPF 07LM 120 FRPC

Series	Lumens	Voltage/Driver
IC1JBPF 4" IC Junction Box in Plaster Frame New Construction	<b>07LM</b> 700 Nominal Lumens	<b>120 FRPC</b> 120 V Forward/Reverse Phase Cut, 5% dim
	<b>10LM</b> 1000 Nominal Lumens	<b>MVOLT ZT10</b> Multi-Volt (120-277), 0-10V, 10% dim
		<b>MVOLT ZT1</b> Multi-Volt (120-277), 0-10V, 1% dim
		<b>MVOLT EZ10</b> Multi-Volt (120-277), eldoLED 0-10V, 10% dim
		<b>MVOLT EZ1</b> Multi-Volt (120-277), eldoLED 0-10V, 1% dim

#### TRIM:

Ordering Example: 4JBLDT DB 27K 90CRI WWH

Series	Trim Designation	Color Temperature	CRI	Trim Finish
4JBLDT 4" Junction Box LED Downlight Trim	<b>DB</b> Downlight Baffle <b>DC</b> Downlight Cone	<b>27K</b> 2700K	<b>90CRI</b> 90+ CRI	<b>WWH</b> White
		<b>30K</b> 3000K		
		<b>35K</b> 3500K		
		<b>40K</b> 4000K		



A+ Capable options indicated  
by this color background

# 4" IC RATED LED NEW CONSTRUCTION JUNO RED SERIES™ DOWNLIGHT

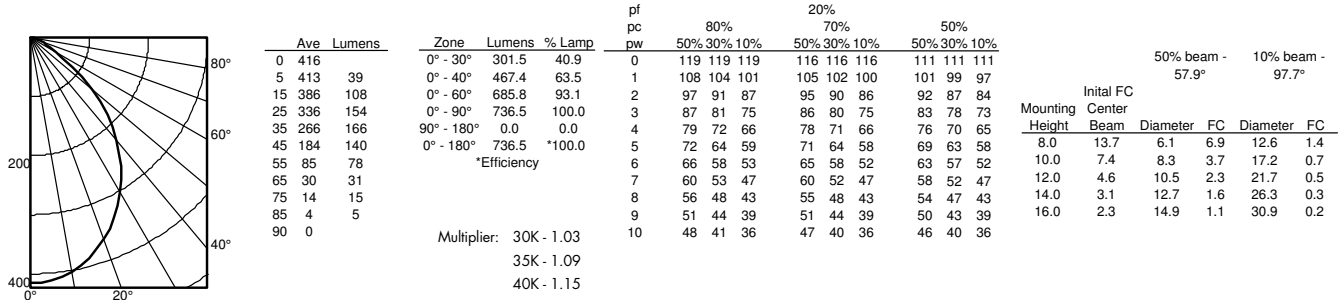
FOR INSTALLATION INTO FIRE RATED CEILING ASSEMBLIES

## IC1JBPF 4JBLDT

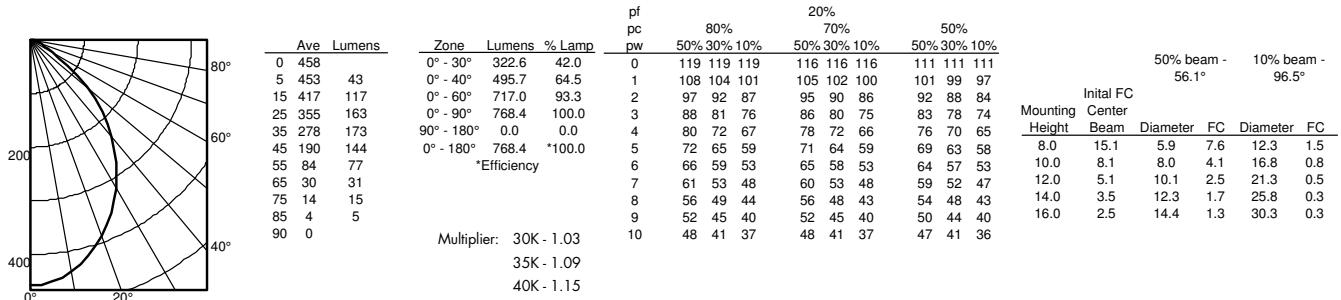
### PHOTOMETRICS

Distribution Curve      Distribution Data      Output Data      Coefficient of Utilization      Illuminance Data at 30" Above Floor for a Single Luminaire

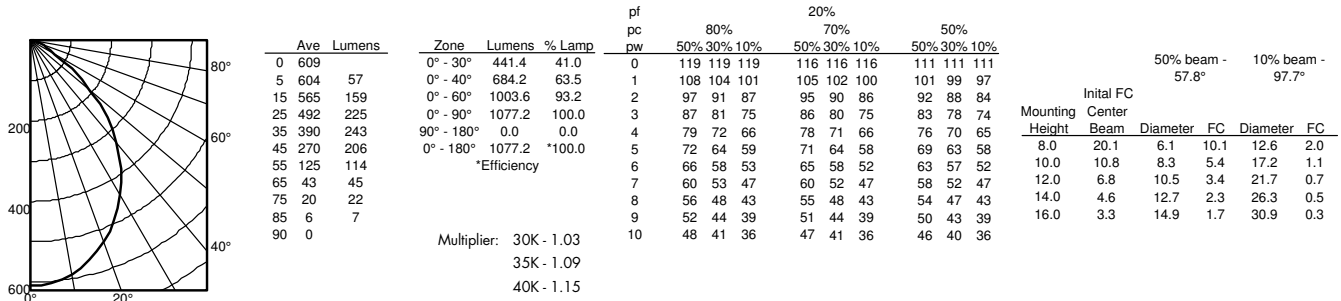
**IC1JBPF 07LM 120 FRPC + 4JBLDT DB, 2700K LEDs, input watts: 10, delivered lumens: 736.5, LM/W = 74, test no. 19-205-05P1, tested in accordance to IESNA LM-79.**



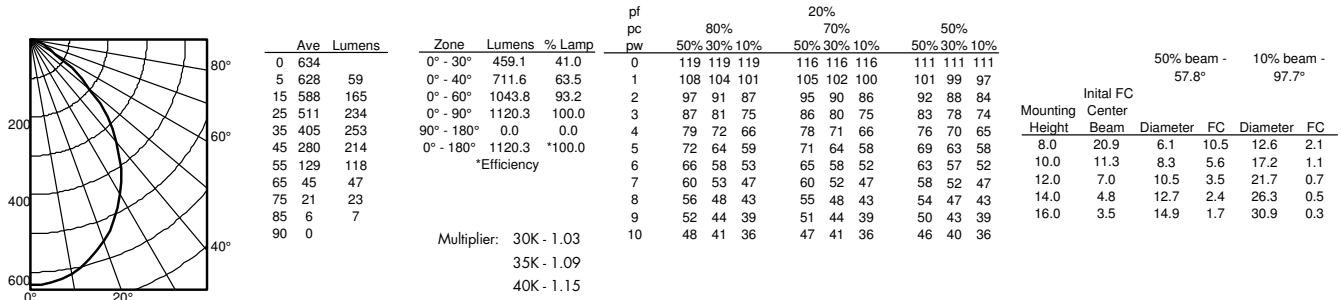
**IC1JBPF 07LM 120 FRPC + 4JBLDT DC, 2700K LEDs, input watts: 10, delivered lumens: 768.4, LM/W = 77, test no. 19-205-06P1, tested in accordance to IESNA LM-79.**



**IC1JBPF 10LM 120 FRPC + 4JBLDT DB, 2700K LEDs, input watts: 15.1, delivered lumens: 1077.2, LM/W = 71, test no. 19-205-01P1, tested in accordance to IESNA LM-79.**



**IC1JBPF 10LM 120 FRPC + 4JBLDT DC, 2700K LEDs, input watts: 15.1, delivered lumens: 1120.3, LM/W = 74, test no. 19-205-01P2, tested in accordance to IESNA LM-79.**



Fixtures tested to IES recommended standard for solid state lighting per LM-79-08. Photometric performance on a single unit represents a baseline of performance for the fixture. Results may vary in the field.