

Juno RED Series™ 4" Downlights & Adjustables

New construction solution for shallow plenum and fire-rated ceilings





Juno RED Series™ 4" Downlights & Adjustables

Juno Red Series 4" Downlights and Adjustables are ideal for new construction installations with shallow plenum ceilings. These versatile, IC-rated housings are quick and easy to install. Additionally, a maximum 2-hour fire-rated ceiling assembly can be maintained when installed according to the International Building Code, Section 714.

Features include:

- 4" IC-rated Air-Loc housings can be completely covered with insulation
- Patented Real Nail® 3 bar hangers: telescoping system with pre-installed removable bugle-headed nail for easy repositioning of housing in joist construction
- Dedicated 120V or multi-volt 120V-277V operation
- ENERGY STAR® certified and can be used to meet Title 24 JA8 high efficacy LED light source requirements



Juno IC1JBPF and IC1AJBPF Housings are ideal low-profile, downlighting solutions when used with compatible LED trims.



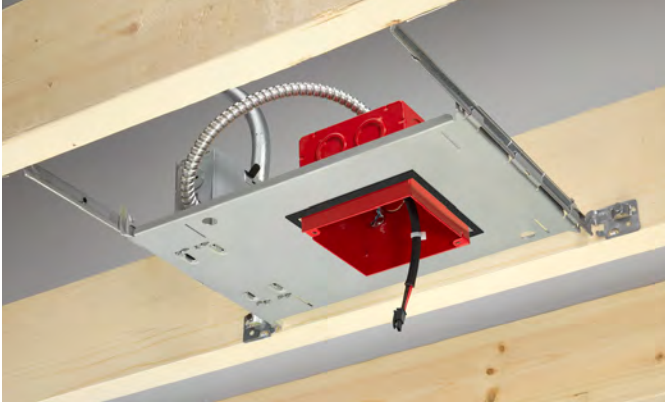
Included hardware

Juno RED Series™ Downlights & Adjustables Installation

Whether you need a downlight or adjustable gimbal fixture, IC1JBPF/IC1AJBPF housings are easy to install in just a few simple steps. Up to a maximum 2-hour fire-rated ceiling assembly can be achieved when installed per International Building Code, Section 714.

Required ceiling cut-out is 4-1/4" square and installs into ceilings up to 1-1/4" thick*. The following is an installation example utilizing the housing and LED trim with the supplied mounting hardware.

For your safety, refer to the IC1JBPF or IC1AJBPF installation instruction sheet for complete installation details.



Extend the bar hangers to fit between the ceiling joist and remove the appropriate knock-out(s) for field wiring.



Secure the mounting bracket to the junction box using the flat head screws provided.



Place provided trim ring around LED trim and plug the connector provided on the LED trim into the mating connector in the junction box housing.



Insert the trim into the housing using push in friction springs and turn power on to the fixture.

* For thicker ceilings, use a standard #8-32 flat head screw per required length.

Juno RED Series™ 4" Downlights and Adjustables

Complete downlight and adjustable fixture solutions for use in fire-rated ceilings.



IC1JBPF Housing with 4JBLDT DB Baffle Trim



IC1JBPF Housing with 4JBLDT DC Smooth Trim



IC1AJBPF with 440LED in White (WH)

Ordering Information

4" IC-Rated Downlight Housing



Series	Lumens	Voltage/Driver
IC1JBPF Juno RED Series 4" IC New Construction Downlight Housing	07LM 700 Lumens 10LM 1000 Lumens	120 FRPC 120V, Forward/Reverse Phase MVOLT ZT10 120V-277V, 0-10V dimming down to 10% MVOLT ZT1 120V-277V, 0-10V dimming down to 1% MVOLT EZ10 120V-277V, eldoLED, dimmable down to 10% MVOLT EZ1 120V-277V, eldoLED, dimmable down to 1%

IC1JBPF Compatible LED Downlight Trims

Series	Trim Style	Color Temperature	CRI	Trim Finish
4JBLDT Juno RED Series LED Downlight Trim	DB Downlight Baffle DC Downlight Cone	27K 2700K 30K 3000K 35K 3500K 40K 4000K	90CRI 90+ CRI	WWH White

4" IC-Rated Adjustable Housing



Series	Lumens	Voltage/Driver
IC1AJBPF Juno RED Series 4" IC New Construction Adjustable Housing	06LM 600 Lumens	120 FRPC 120V, Forward/Reverse Phase MVOLT ZT10 120V-277V, 0-10V dimming down to 10% MVOLT ZT1 120V-277V, 0-10V dimming down to 1% MVOLT EZ10 120V-277V, eldoLED, dimmable down to 10% MVOLT EZ1 120V-277V, eldoLED, dimmable down to 1%

IC1AJBPF Compatible LED Adjustable Trims

Series	Generation	Lumens	Color Temperature	CRI	Trim Finish
440LED LED Adjustable Trim	G4N Generation 4N	06LM 600 Lumens	27K 2700K 30K 3000K 35K 3500K 40K 4000K	90CRI 90+ CRI	WH White

