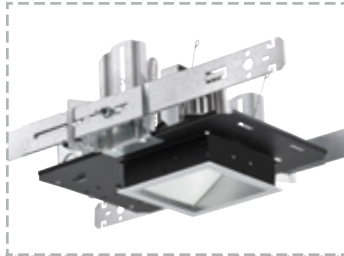


# EVO<sup>®</sup> LENSED WALLWASH

## SQUARE



EVO square lensed wallwash (Series: EVO4SQLW, EVO6SQLW) / lm/W: Up to 97.8



This application is ideally suited for EVO Square Lensed Wallwash.

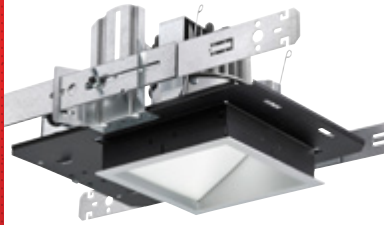
**Let a square be the highlight for once.** Designers often prefer square aperture luminaires where adjacent lighting elements, HVAC and other rectilinear shapes blend seamlessly into the ceiling surface and surroundings. Smooth, balanced illumination is the hallmark of a superior wallwash. EVO square lensed wallwashers deliver on both aesthetics and performance.

LED energy efficiency, long-life, balanced illumination, the Future-Ready features available only with EVO — all of that — in a square aperture.

- Excellent uniformity, providing smooth distribution of light to the wall, free of room-side glare and without direct view of LEDs
- EVO solid-state luminaires tested to LM-79-08 standards — EVO LEDs tested to LM-80 standards
- Innovative reflector is miter-free, one-piece, polymer composite and will not distort or separate — no cracking, no light leaks
- Keyed reflector positioning keeps the light engine and reflector aligned and locked in position — adjustable frame allows up to 5° of rotation after installation
- Exceptional performance and modular design – like every EVO luminaire, EVO squares boast configurable LED boards, 2.5-step MacAdam's ellipse binning, and exceptional efficacy.

## EVO. FUTURE READY.

**Gotham® has created an EVO luminaire** that combines the aesthetic attributes of the square, with exceptional performance that rivals EVO round. Plus, there are all the benefits of advanced solid-state technology — efficiency, control, energy savings.



EVO Square Lensed Wallwash

- 1 PERFECT ALIGNMENT** / EVO's adjustable frame allows rotation of the light engine and reflector up to 5 degrees after the frame is installed. Alignment becomes a very simple task. EVO squares also feature keyed reflector positioning — the reflector is secured to the frame with a precise tab and slot system.
- 2 MITER-FREE CONSTRUCTION** / Most square luminaires use mitered corners, which are subject to racking, distortion, and light leaks. EVO squares feature miter-free, one-piece polymer composite reflectors that maintain their integrity and performance: Square now, square later.
- 3 AZIMUTHAL DESIGN** / Using advanced mathematics and manufacturing, Gotham's design team has created a unique one-piece reflector. A circular profile adjacent to the light engine transforms seamlessly into a square at the flange — resulting in optics that outperform any standard square luminaire.
- 4 CONTROLLING LIGHT** / With eldoLED drivers dimming to 1% or <1% via 0-10V, DALI or DMX/RDM and nLight by Acuity Controls, EVO delivers premium dimming and networkable control solutions.