



UFITR™ LED Retrofit



Cost savings –
UFIT saves up
to 45 percent
on energy
costs versus a
traditional 2-lamp
fluorescent



High ambient
option available
to provide up to
a 50°C ambient
rating



Classic acrylic
round lens
design blends
seamlessly into
any application



All UFITR
configurations
are DLC listed.
High Efficiency
versions are DLC
Premium Listed



Over 2500
possible
configurations
for ultimate
adaptability



nLight® enabled
for wired and
wireless controls

Upgrade to Premium LED Performance at a Fraction of the Cost

The UFITR™ LED retrofit kits are the most versatile and configurable retrofit kits on the market. UFITR delivers the design and features of a new fixture with the labor and material savings of a retrofit kit. UFITR can be installed virtually anywhere a fluorescent strip or low bay is in use today; including warehouses, factories, storage facilities, educational facilities and retail spaces.

Quick Facts

- 4,000 to 20,000 lumens
- Standard and high efficacy options; up to 150+ LPW
- 4-foot and 8-foot lengths available
- eldoLED driver options allow for 1% dimming
- PLR wiring available for simplified continuous-row mounting
- End-to-end illumination; no pixilation
- Optional sensor endcap allows for integrated controls

- UFITR™ can be installed on almost any fluorescent fixture on the market
- Three versatile designs to suit many applications
- Upgrade from fluorescent to advanced LED technology in just five minutes



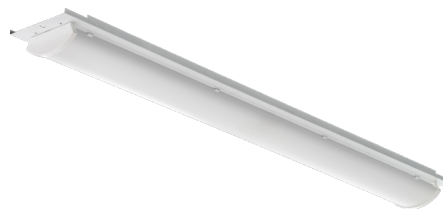
Before with fluorescent fixtures



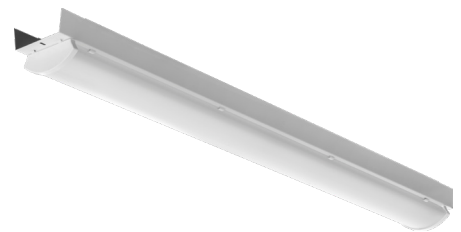
After with UFITR



UFITR **L** is an LED Low Bay Retrofit Kit recommended for installation into existing fluorescent low bay housings



UFITR **S** is an LED Strip Retrofit Kit Recommended for installation onto existing fluorescent strip housings



UFITR **F** is an LED Surface Mount Retrofit Kit recommended for installation onto any flat surface of a host fluorescent fixture



UFITR is the first industrial retrofit kit to come enabled with nLight® AIR.

nLight® Options for UFITR

NLTAIR2 RES7

- Integrated occupancy sensor with automatic photo dimming cell
- Works out of the box
- Capable of wireless configuration and programming via CLAIRITY™ Mobile App

NLTAIR2 RIO

- Integral connection for an individual fixture to the nLight® AIR network without the sensor functions

rPP20D

- Add as an accessory to individual or rows of fixtures to connect them to the nLight® AIR network

Visit www.lithonia.com for more information