

# RADEAN

Pedestrian-Friendly Lighting



Introducing the  
**RADEAN** Family from  
Lithonia Lighting

# The Opportunity:

- Urban pedestrian spaces are a **rapidly-growing** segment
- This **emerging trend** provides public spaces for pedestrians to mingle and socialize
- Nighttime use of these spaces requires **specialized lighting** that enhances the occupant's experience.



# Unique Requirements:

Pedestrian spaces have **unique requirements** that differ significantly from typical parking lot lighting.

Low mounting heights make **visually comfortable** lighting of primary importance, as the brightness associated with most LED luminaires would be highly objectionable in these spaces.

These luminaires become **sculptures by day**, making their design and construction detail just as important as the illumination they provide by night.



# Forms

- Post Top
- Arm Mount
- Bollard



# Captivating Aesthetics - Day or Night

"I will love the light for it  
shows me the way, yet I  
will endure the darkness  
for it shows me the stars."

—Og Mandino

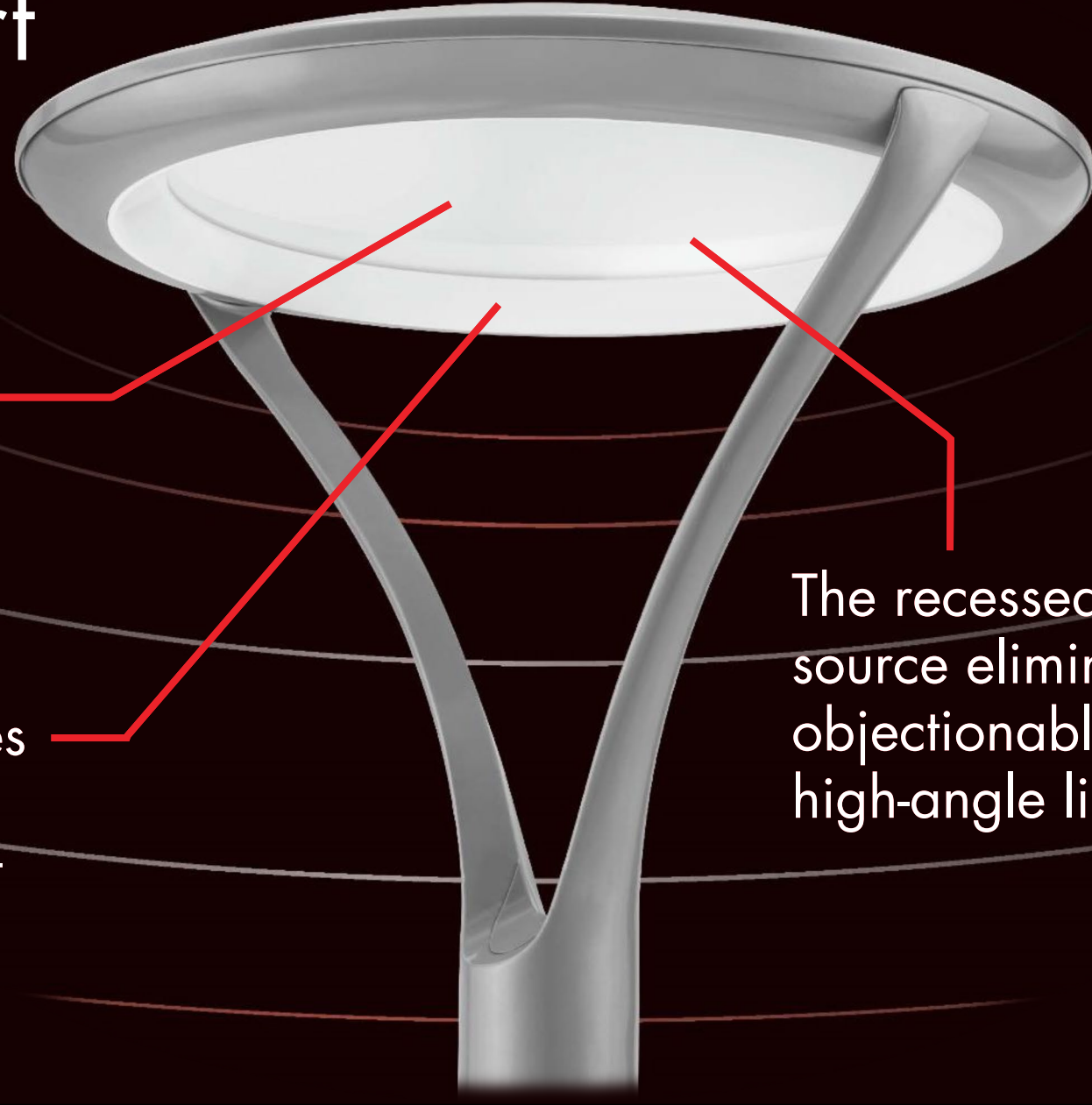


# Visual Comfort

The uniformly luminous waveguide has low surface brightness

The transition zone creates an intermediate luminous surface to reduce contrast

The recessed source eliminates objectionable high-angle light



# Serious Illumination:

Performance Package	Wattage	Post Top Lumens (4000K)	Arm Mount Lumens (4000K)
P1	25W	3,344	3,543
P2	38W	5,169	5,478
P3	54W	7,303	7,739
P4	86W	11,606	12,299
P5	122W	16,293	17,126

The Radean is no toy. With up to 17,000 lumens the Radean can be used at higher mounting heights and provide more illumination.



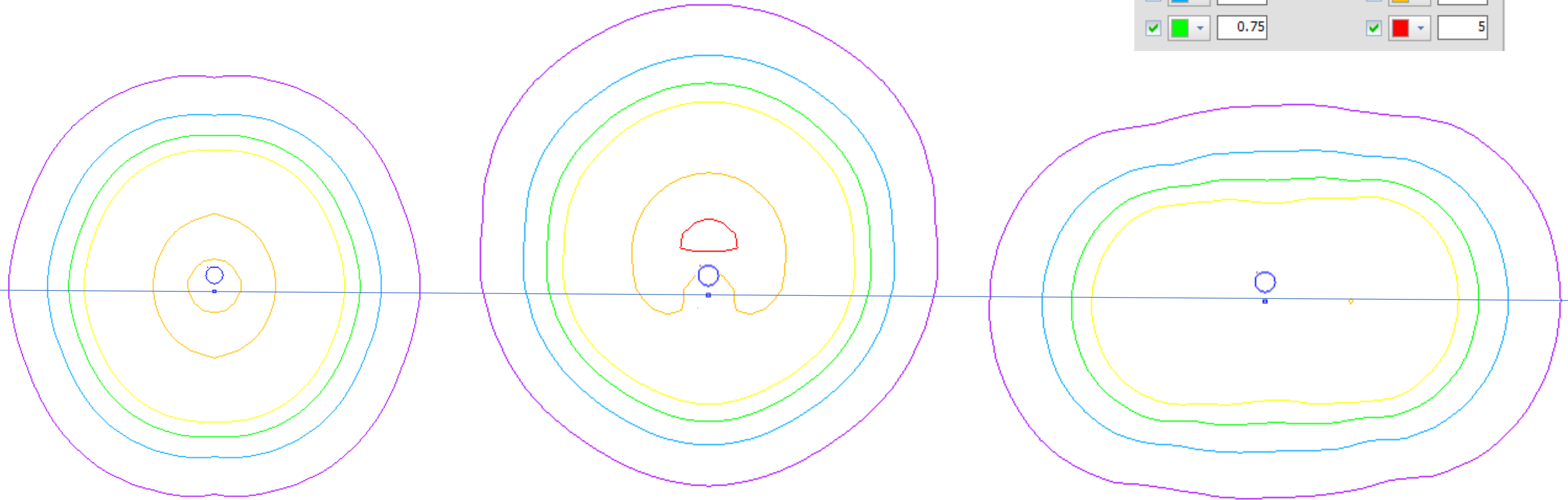
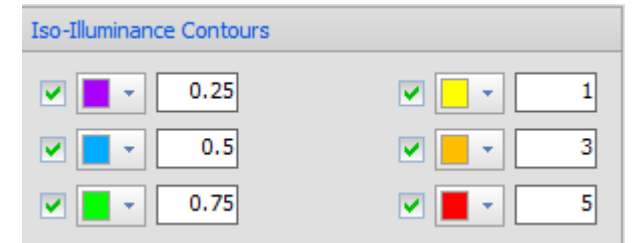
# High Quality Illumination:

CCT	Arm-Mount Lumens (P3 @ 54W)	LPW
2700K	7,144	132
3000K	7,382	137
3500K	7,561	140
4000K	7,739	143
5000K	7,739	143

Get the color temperature you want with industry-leading efficacy.

# Soft Photometric Distributions:

- Wide, soft distributions without undesirable striations.



Symmetric (SYM)  
Type V

Asymmetric (ASY)  
Type IV

Pathway (PATH)  
Type III

# Subtle Shielding

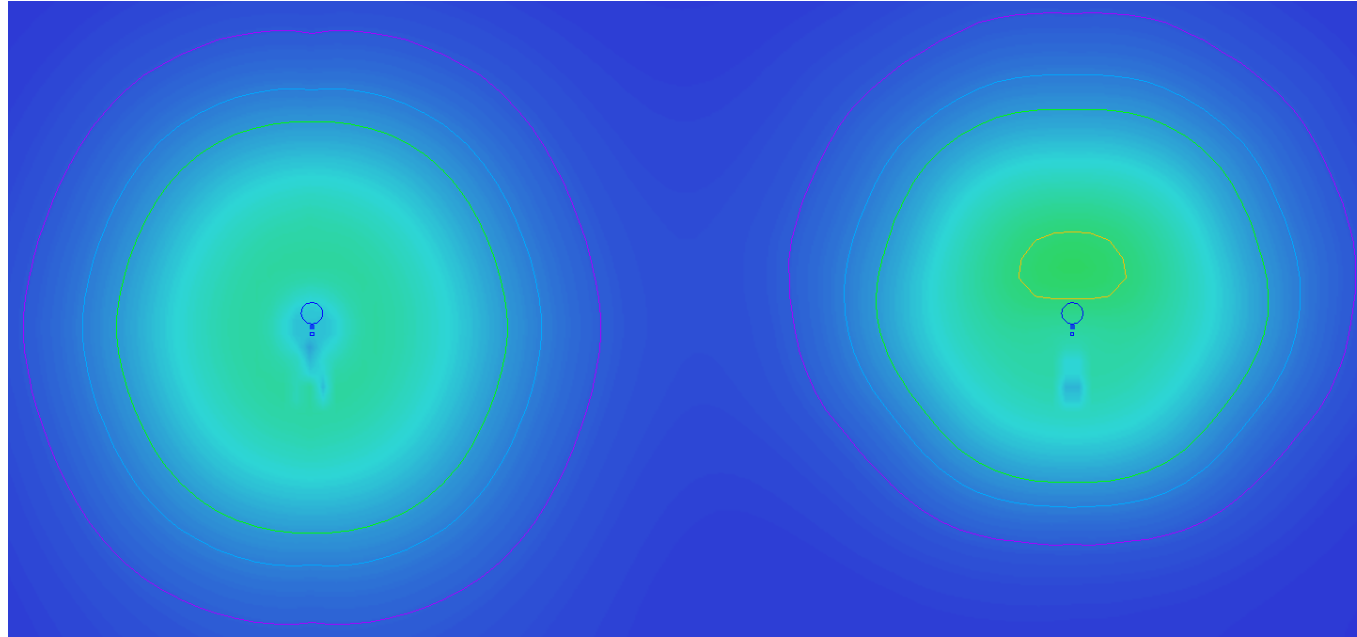
The house-side shield is designed to provide the desired light trespass control without detracting from the flowing lines of the luminaire.



While still providing 90% efficiency!

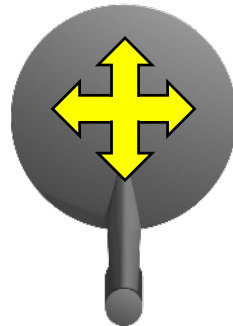
# Optical Distributions: Symmetrical (SYM)

Symmetric  
Distribution

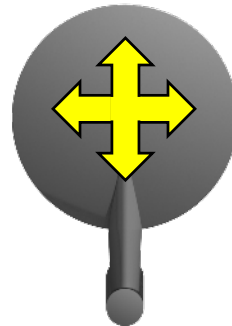


Symmetric with  
House-side Shield

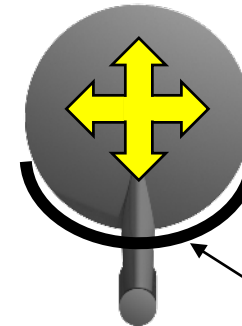
RAD1 SYM



RAD1 SYM R90



RAD1 SYM HS

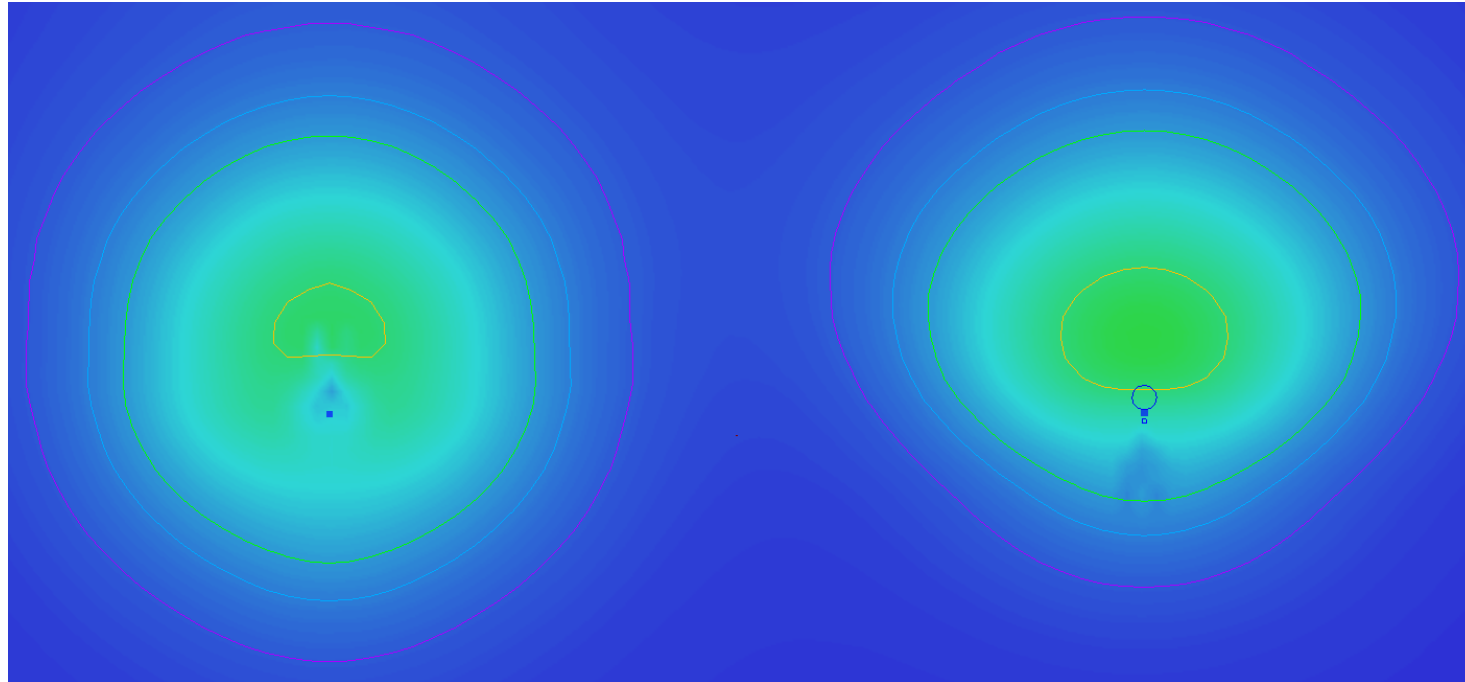


House side shield



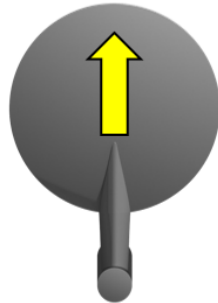
# Optical Distributions: Asymmetrical (ASY)

Asymmetric Distribution

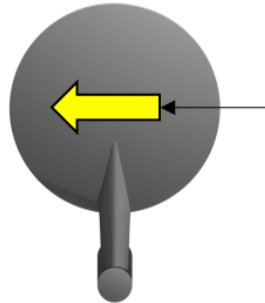


Asymmetric with House-side Shield

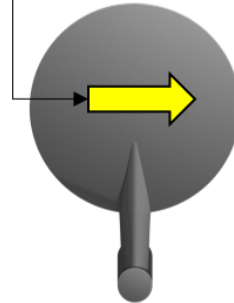
RADPT ASY Standard



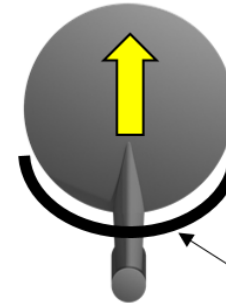
RADPT ASY L90



RADPT ASY R90



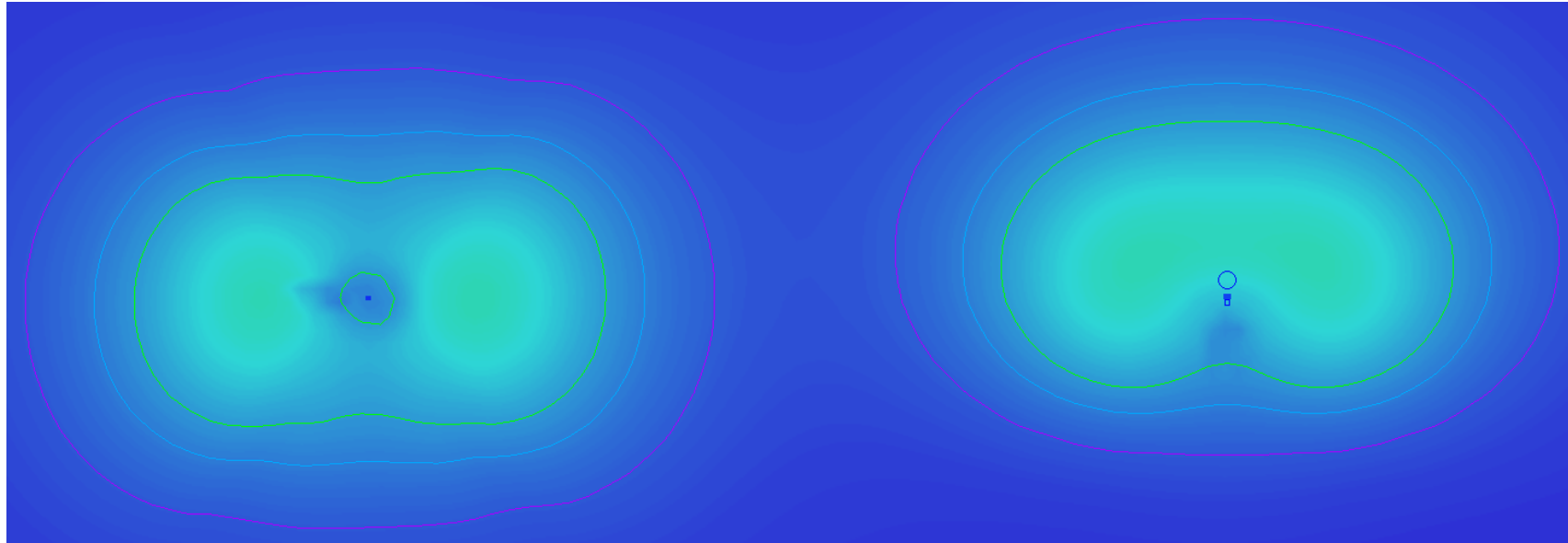
RADPT ASY HS



House side shield

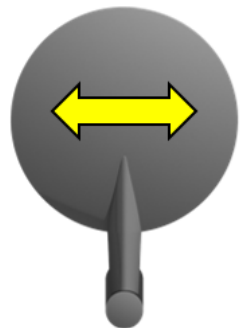
# Optical Distributions: Pathway (PATH)

Pathway  
Distribution

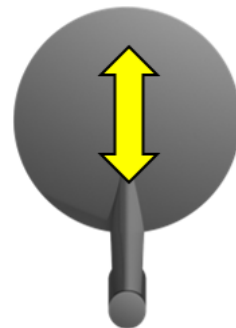


Pathway with  
House-side Shield

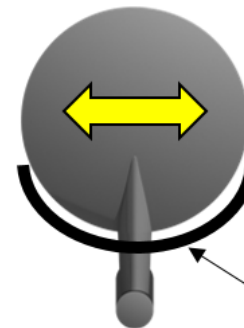
RAD1 PATH



RAD1 PATH **R90**



RAD1 PATH **HS**

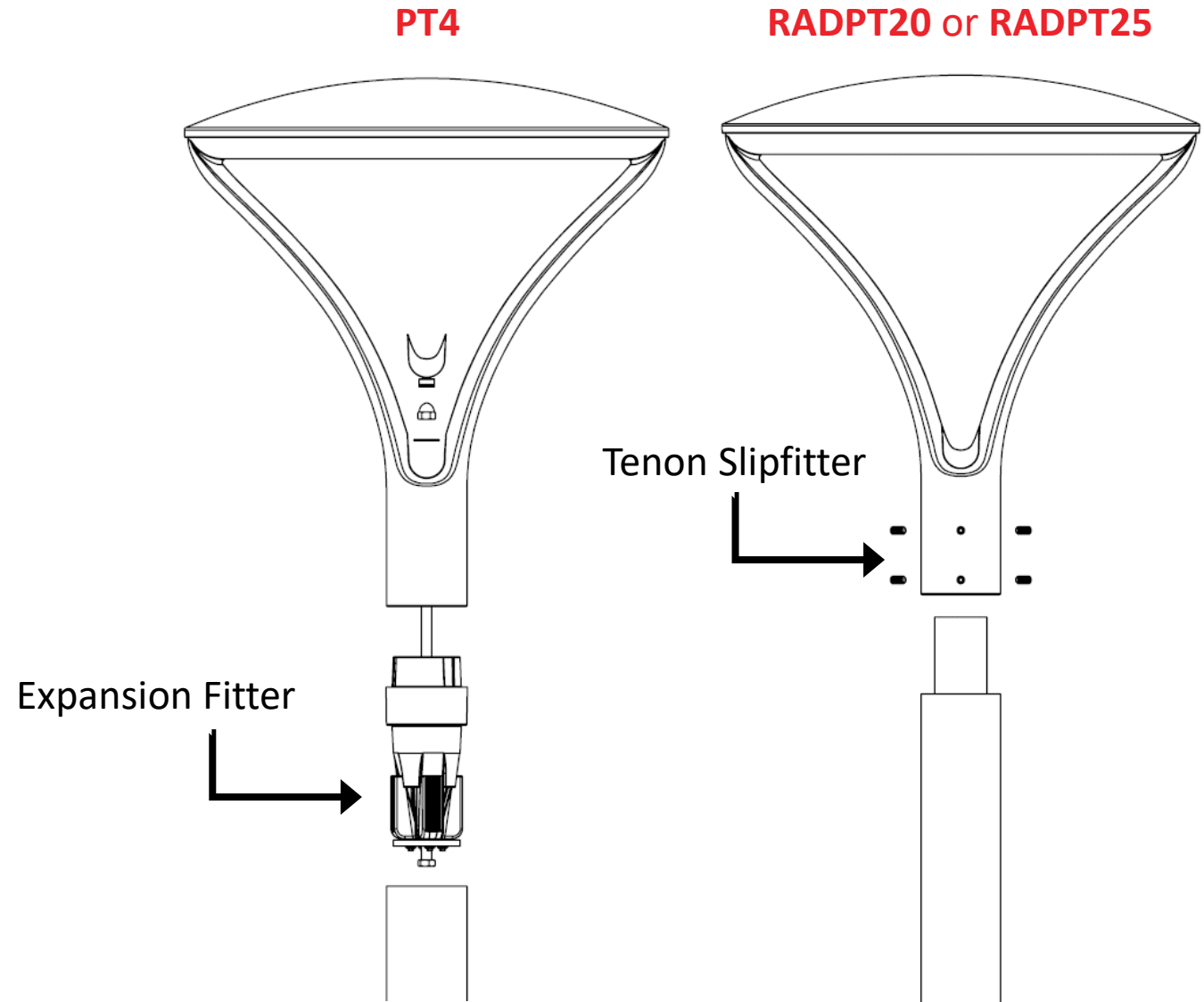


House side shield

# Post Top Mounting

The RADEAN post-top is best mated with a 4" round pole using the PT4 expansion fitter for a clean installation.

It is also compatible with either 2 3/8" or 2 7/8" tenons using the RADPT20 or the RADPT25.



# Control Options

## Motion Sensor

The RADEAN family of products is available with a hidden microwave motion detector that sits behind the lens and is completely indistinguishable from the standard product.

This high/low motion sensor will force the luminaire to full output when motion is detected and will drop back to 30% power when no motion is detected.





# Control Options

## Field Adjustable Output

Reduce energy by dimming the light simply by turning a screw. The field adjustable output control enables precise light output with the turn of a screw!



Field Adjustable  
Output Device

# Control Options

## Button Photocell

With only the smallest aperture on top of the dome, this photocell automatically turns the luminaire off during the day.



Button Photocell  
(MVOLT and 347V)

## nLight® AIR Networked Control

Connect to any nearby nLight AIR system and take advantage of system wide controls including dimming and scheduling for curfews.

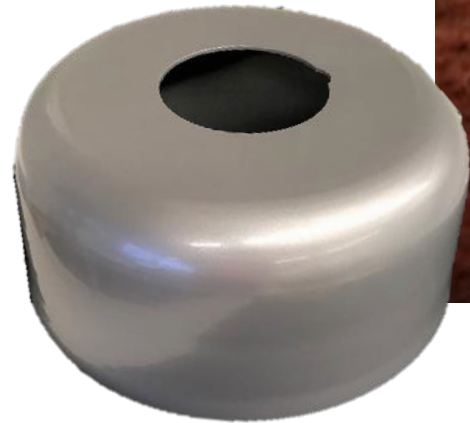
Commission from the ground without a lift using your Clarity app on your phone.

# Decorative Pole Base

The RADEAN family includes a decorative pole base to complete the look!

This accessory is available for use with any 4" O.D. round metal pole to add a bit of style.

**RADFBC**  
Full Base Cover



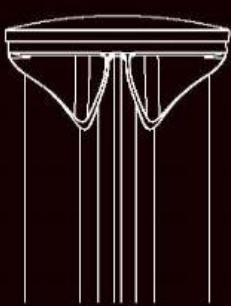
**RSS Straight**  
Round Pole

**RADCS**  
Decorative Base

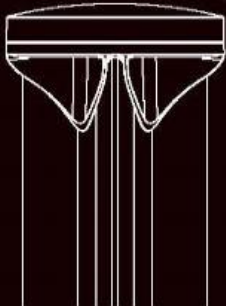


# RADEAN Bollard

slim top, deep crown



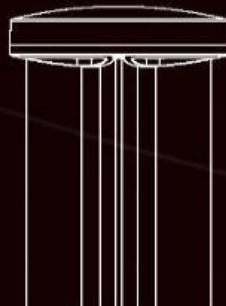
tall top, deep crown



slim top, flat crown



tall top, flat crown





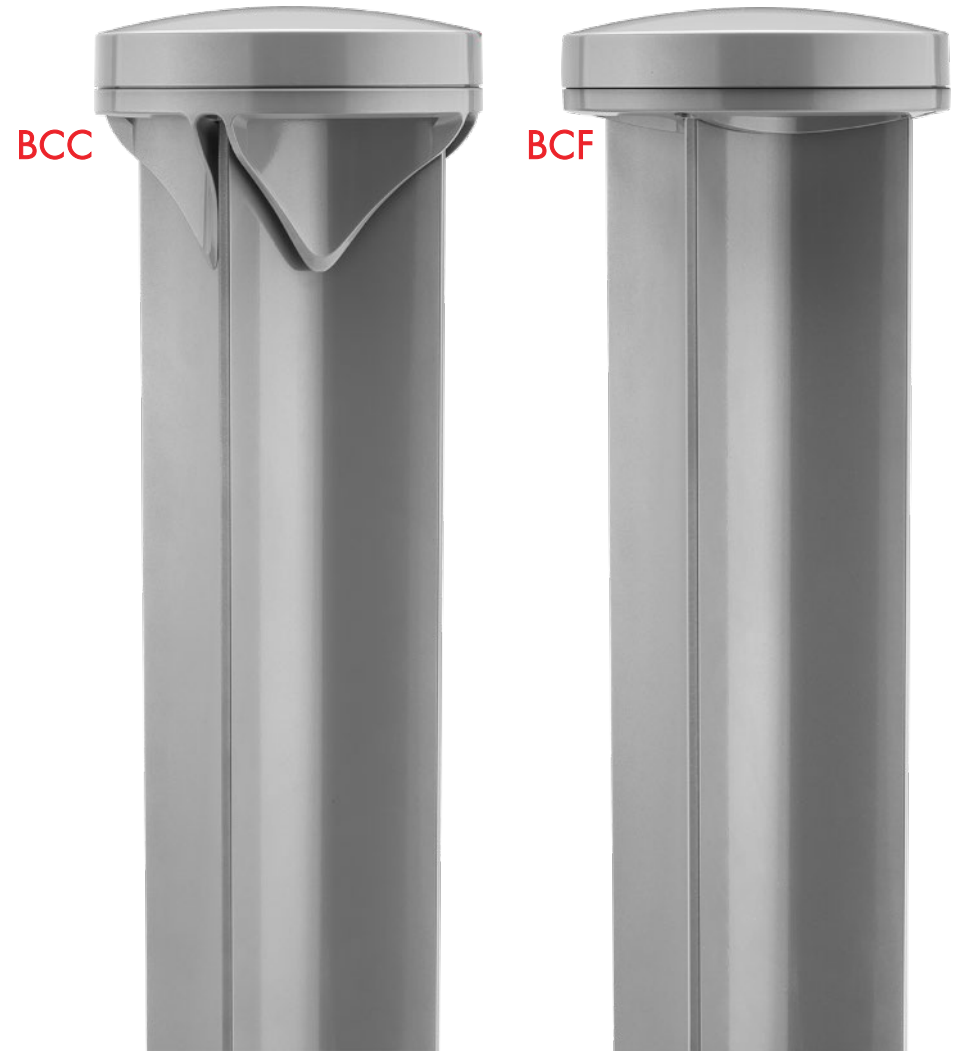
# Bollard – Tall Top or Slim Top

- Default finish matches shaft
- Diameter is 8.25" diameter
- BTT = Bollard Top Tall
- BTS = Bollard Top Slim



# Bollard – Deep Crown or Flat Crown

- Default finish matches shaft
- BCC = Bollard Crown Deep
- BCF = Bollard Crown Flat



# Bollard – Optional Heights

- Standard height is 42"
- H36 = 36" height
- H30 = 30" height
- H24 = 24" height



H24



H30



H36



Standard 42"

# Bollard – Options and Configurations

Mix and match components and colors for a truly personalized look.





# Easy Customization

RADB LED P4 30K SYM MVOLT BTS BCCDBR DBLBXD

RADB LED – Series Name – RADEAN Bollard

P4 – Performance Package

30K – LED Color Corrected Temperature (CCT)

SYM – Photometric Distribution – Symmetric (Type V)

MVOLT – Voltage – Any voltage between 120V and 277V

BTS – Bollard Top Slim – Painted to match shaft color

BCCDBR – Bollard Crown Deep – Painted Bright Red

DBLBXD – Shaft and base color – Painted Textured Black



# Performance:

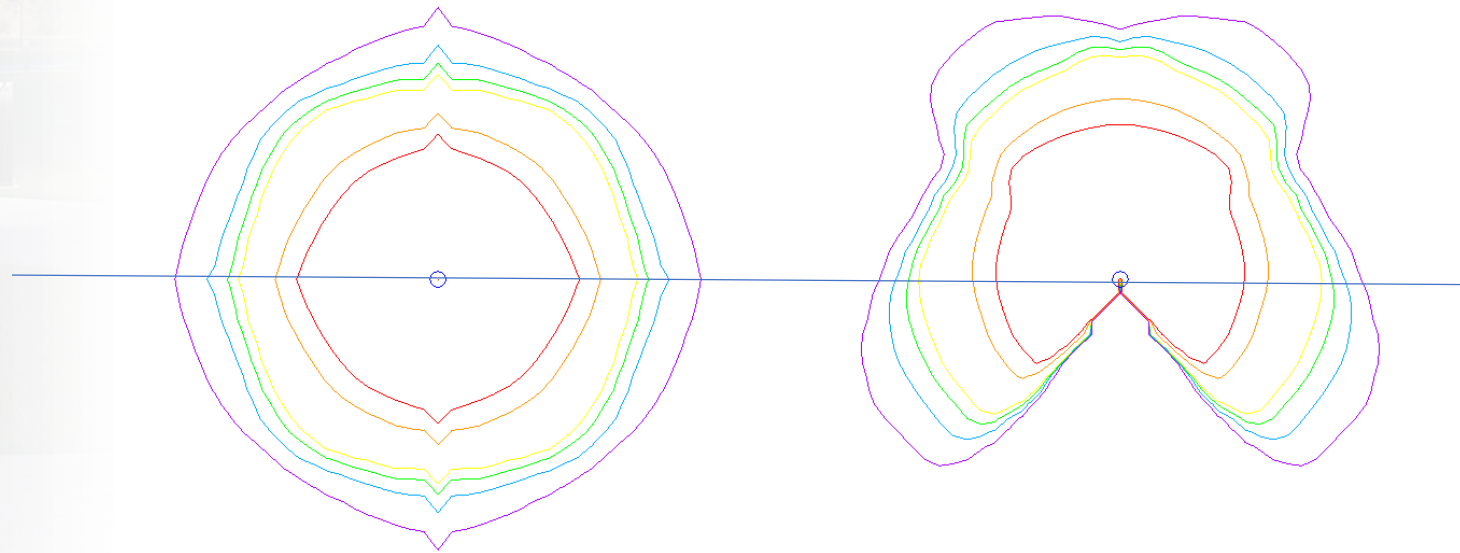
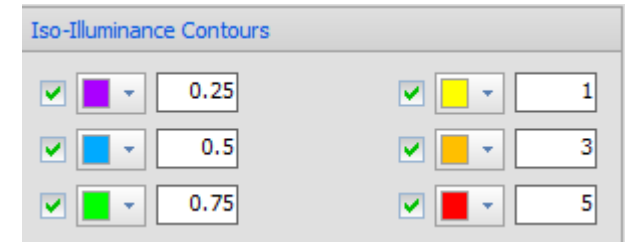
Performance Package	Wattage	Black SYM (4000K)	Aluminum SYM (4000K)	White SYM (4000K)
P1	5W	321	370	500
P2	8W	601	692	934
P3	13W	965	1,112	1,502
P4	19W	1,362	1,569	2,118
P5	32W	2,158	2,486	3,355

The shaft/crown color will affect performance – all values are approximate.

# Bollard – Photometric Performance

The Radean bollard has symmetric and asymmetric distributions.

Asymmetric light output is approximately 90% of the symmetric light output.



Symmetric (SYM)

Asymmetric (ASY)





RADEAN

Pedestrian-Friendly Lighting





# RADEAN

Pedestrian-Friendly Lighting





**Thank You**