



The Art Hotel, Denver, Colorado (Astula Inc., Real J. Garcia Photography)

## Juno® R620L Adjustable Beam LED Cylinder Series

It's all about change and adaptability

The stylish and economical Juno R620L Series is the answer to your lighting applications that require a range of beam patterns or may have a change in beam requirements in the future. The proprietary, patented R620L optical system enables the beam distribution to be continuously adjusted between 17° and 53° by simply rotating the front bezel – no special tools or additional accessories required. More importantly, the optical system offers unparalleled efficiency by maintaining output that varies by no more than 40 lumens throughout the beam adjustment range. Change has never been as easy, efficient or affordable.

### Specification-grade features include:

- Simple and timeless cylindrical aesthetic with standard ELV dimming compatibility
- Integrated driver resulting in small overall fixture footprint
- Optional bayonet-mount accessory holder that can accommodate one accessory if desired
- ENERGY STAR® certified, DesignLights Consortium® qualified, and certified to meet the high efficacy requirements of CA Title 24 (JA8 2016)



**JUNO**®

# Juno® R620L Adjustable Beam LED Cylinder Series

The ultra-efficient Juno R620L uses only 15 watts to provide up to over 1100 lumens. It is compatible with Juno Trac-Lites™ and Trac-Master® trac and system components, or it can be specified with a variety of factory-assembled alternate mounting adapters to fit on a wide array of 120V competitor track systems.

- Choice of 2700K, 3000K, 3500K or 4000K CCTs at 80+ or 90+ CRI
- Available in black, white or silver finishes
- UL and cUL listed



## Finishes



White

Black

Silver

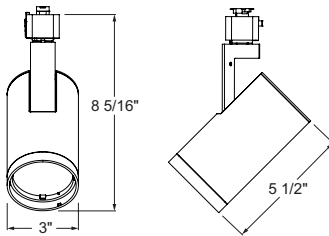
## Accessory Holders



White

Black

## Dimensions



# Juno® R620L Adjustable Beam LED Cylinder Series

## Ordering Information

Examples: R620L 27K 80CRI PDIM VBS BL, R620L HTYPE 30K 90CRI PDIM VBS WH AHR620 WHT

| Series  | Mounting Adapter Type                              | CCT  | CRI  | Dimming Compatibility         | Beam Distribution                              | Finish             | Optional Accessory Holder*  |
|---|--|--|--|-------------------------------|--|--------------------|---|
| <b>R620L</b><br>Juno Trac-Lites™<br>15W Adjustable<br>Beam LED Cylinder | <b>(Blank)</b><br>Juno Universal 120V Trac Adapter | <b>27K</b> 2700K<br><b>30K</b> 3000K<br><b>35K</b> 3500K<br><b>40K</b> 4000K | <b>80CRI</b><br>80 CRI<br><b>90CRI</b><br>90 CRI | <b>PDIM</b><br>Phase Dimmable | <b>VBS</b><br>Variable<br>Beam<br>Distribution | <b>BL</b><br>Black | <b>AHR620 BLCK</b><br>Accessory Holder for<br>R620L, Black<br><br><b>AHR620 WHT</b><br>Accessory Holder for<br>R620L, White |
|   | <b>GTYPE</b><br>G-Type Trac Adapter                |  | <b>SL</b><br>Silver                              |                               |  |                    |   |
|   | <b>HTYPE</b><br>H-Type Trac Adapter                |  | <b>WH</b><br>White                               |                               |  |                    |   |
|   | <b>LTYPE</b><br>L-Type Trac Adapter                |  |  |                               |  |                    |   |
|   | <b>TEK</b><br>TEK 120V Trac Adapter                |  |  |                               |  |                    |   |

\* Optional factory-installed or field-installable accessory holder can accommodate one 2.75" accessory. See specification sheet for a full range of available accessories.

